

# Aerial Map



©2022 AgriData, Inc.

Map Center: 38° 18' 0.26, -88° 44' 58



**34-2S-4E**  
**Jefferson County**  
**Illinois**



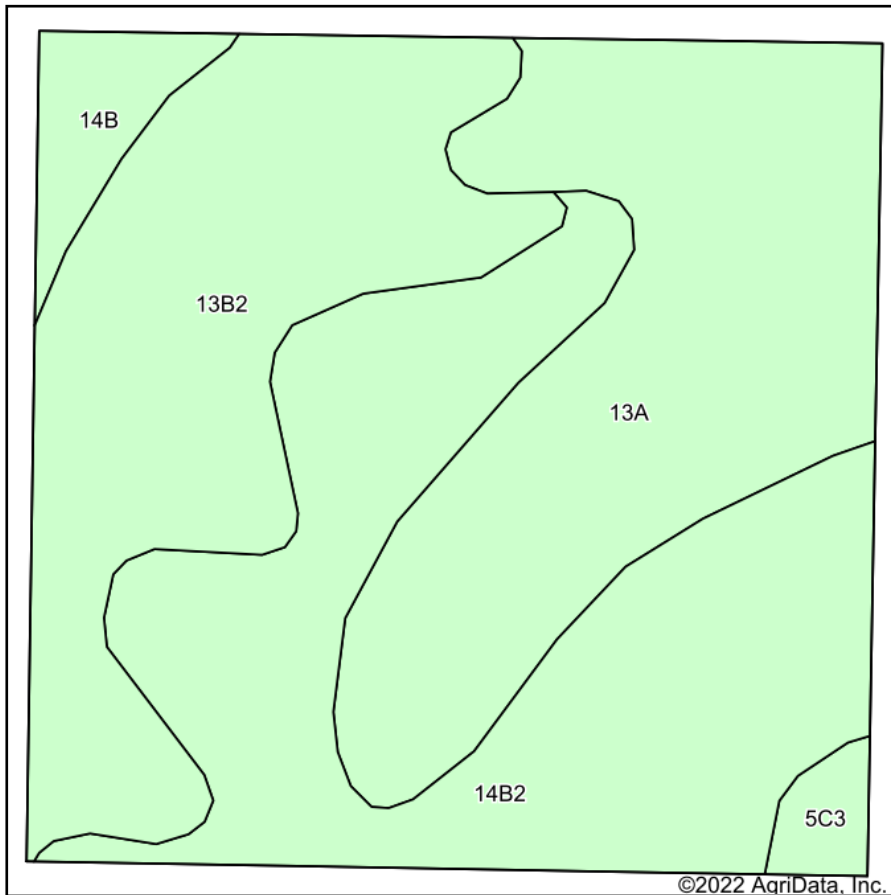
9/29/2022



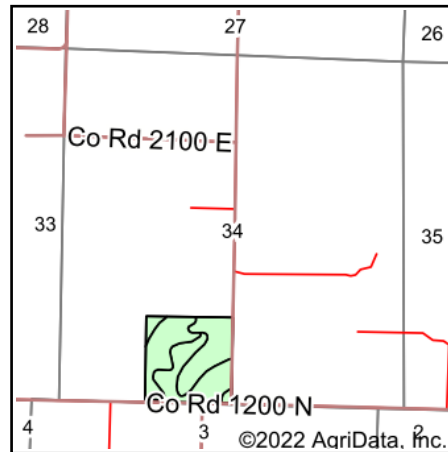
Maps Provided By:  
**surety**<sup>®</sup>  
 CUSTOMIZED ONLINE MAPPING  
 © AgriData, Inc. 2021      www.AgriDataInc.com

Field borders provided by Farm Service Agency as of 5/21/2008.

# Soils Map



Soils data provided by USDA and NRCS.



State: **Illinois**  
 County: **Jefferson**  
 Location: **34-2S-4E**  
 Township: **Webber**  
 Acres: **39.61**  
 Date: **9/29/2022**



Maps Provided By:



© AgriData, Inc. 2021

www.AgriDataInc.com



Area Symbol: IL081, Soil Area Version: 14

| Code                    | Soil Description   | Acres | Percent of field | Corn Bu/A    | Soybeans Bu/A | Wheat Bu/A  | Grass-legume e hay, T/A | Crop productivity index for optimum management |
|-------------------------|--|-------|------------------|--------------|---------------|-------------|-------------------------|--|
| **14B2                  | Ava silt loam, 2 to 5 percent slopes, eroded                   | 14.12 | 35.6%            | **126        | **41          | **51        | 0.00                    | **93   |
| 13A                     | Bluford silt loam, 0 to 2 percent slopes                       | 12.37 | 31.2%            | 136          | 44            | 55          | 3.39                    | 101  |
| **13B2                  | Bluford silt loam, 2 to 5 percent slopes, eroded               | 11.16 | 28.2%            | **129        | **42          | **52        | **3.22                  | **96   |
| **14B                   | Ava silt loam, 2 to 5 percent slopes                           | 1.35  | 3.4%             | **134        | **44          | **54        | 0.00                    | **99   |
| **5C3                   | Blair silty clay loam, 5 to 10 percent slopes, severely eroded | 0.61  | 1.5%             | **102        | **33          | **41        | **3.25                  | **77   |
| <b>Weighted Average</b> |  |       |                  | <b>129.9</b> | <b>42.2</b>   | <b>52.5</b> | <b>2.02</b>             | <b>96.3</b>                                    |

**Table: Optimum Crop Productivity Ratings for Illinois Soil by K.R. Olson and J.M. Lang, Office of Research, ACES, University of Illinois at Champaign-Urbana.** Version: 1/2/2012 Amended Table S2 B811

Crop yields and productivity indices for optimum management (B811) are maintained at the following NRES web site: <http://soilproductivity.nres.illinois.edu/>

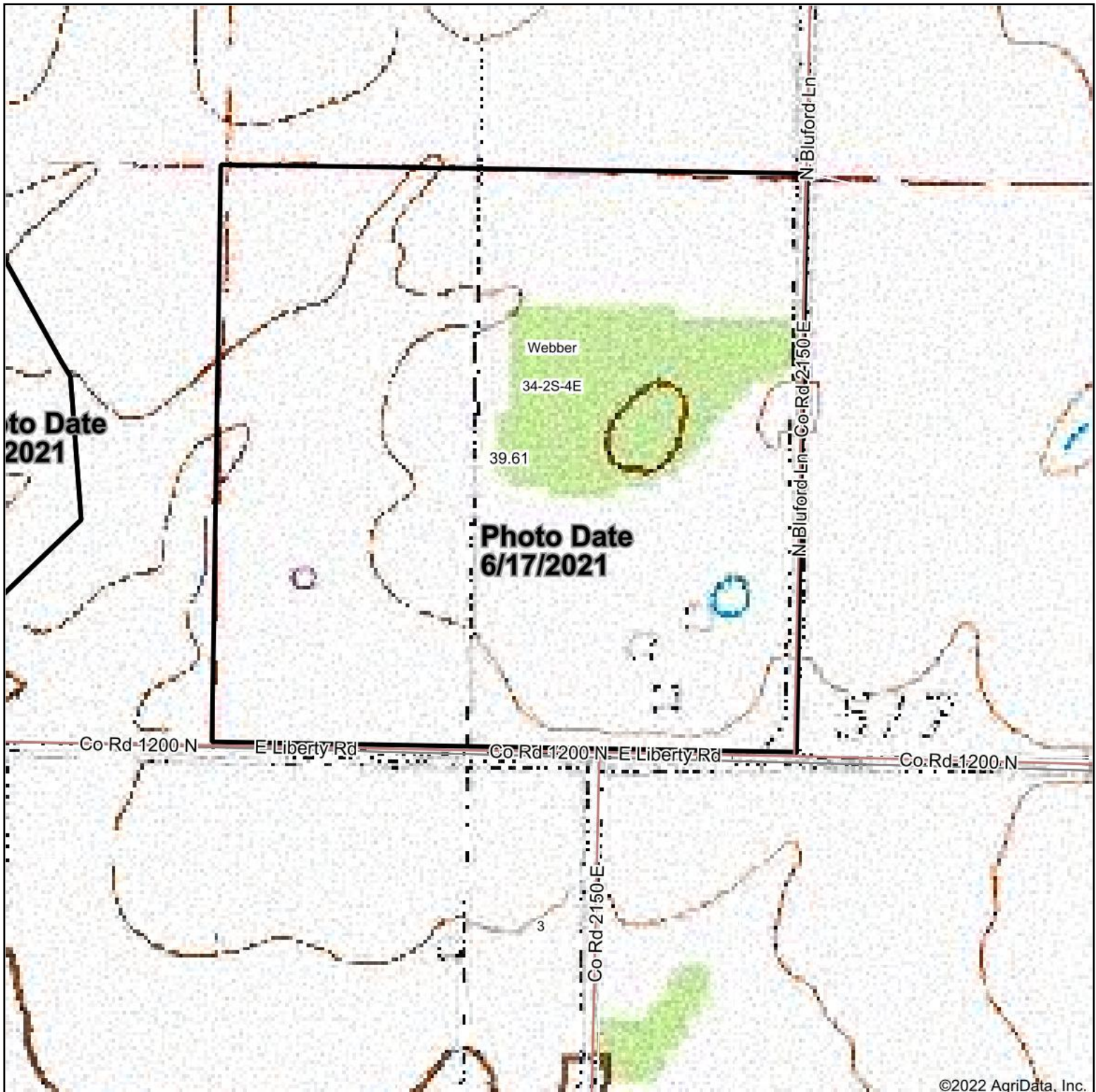
\*\* Indexes adjusted for slope and erosion according to Bulletin 811 Table S3

e Soils in the well drained group were not rated for grass-legume and are shown with a zero "0".

Soils data provided by USDA and NRCS. Soils data provided by University of Illinois at Champaign-Urbana.

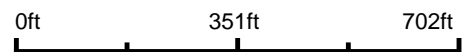


# Topography Map



©2022 AgriData, Inc.

map center: 38° 18' 0.26, -88° 44' 58



**34-2S-4E**  
**Jefferson County**  
**Illinois**



9/29/2022



Maps Provided By:



© AgriData, Inc. 2021

www.AgriDataInc.com

Field borders provided by Farm Service Agency as of 5/21/2008.