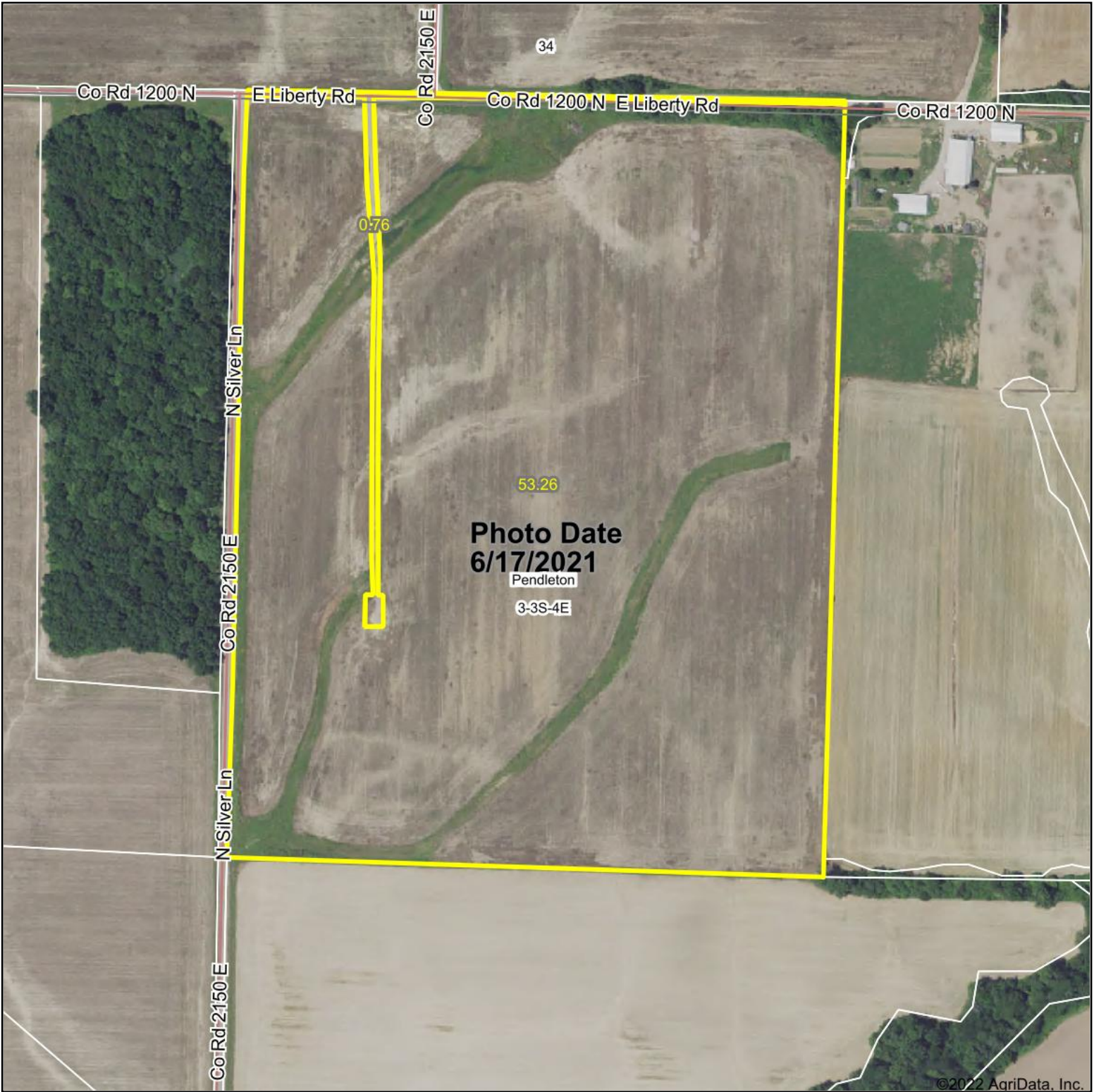


# Aerial Map



©2022 AgriData, Inc.

Map Center: 38° 17' 45.74, -88° 44' 47.53

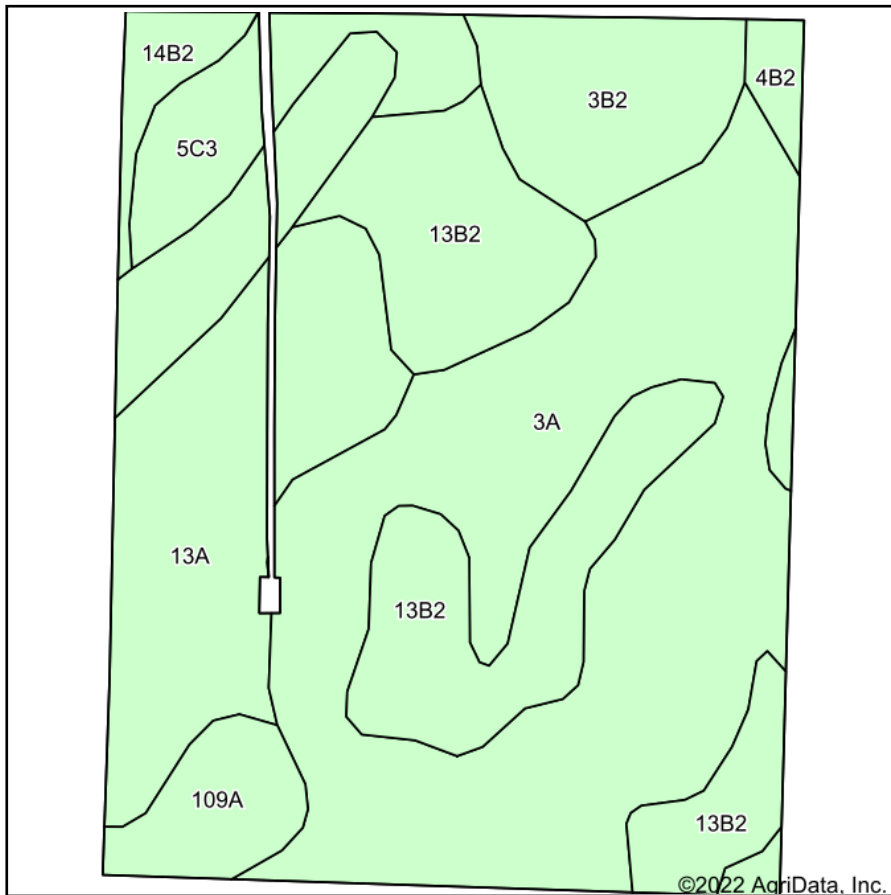


**3-3S-4E**  
**Jefferson County**  
**Illinois**

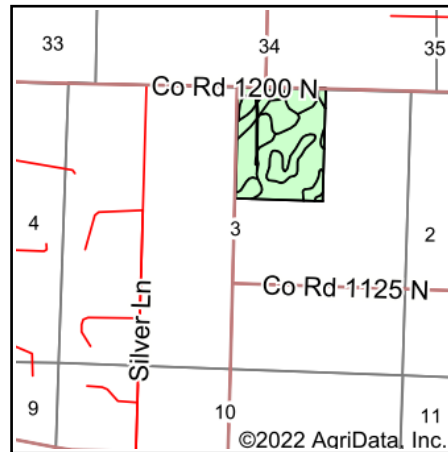


Field borders provided by Farm Service Agency as of 5/21/2008.

# Soils Map



Soils data provided by USDA and NRCS.



State: **Illinois**  
 County: **Jefferson**  
 Location: **3-3S-4E**  
 Township: **Pendleton**  
 Acres: **53.26**  
 Date: **9/29/2022**



Area Symbol: IL081, Soil Area Version: 14								
Code	Soil Description	Acres	Percent of field	Corn Bu/A	Soybeans Bu/A	Wheat Bu/A	Grass-legume e hay, T/A	Crop productivity index for optimum management
3A	Hoyleton silt loam, 0 to 2 percent slopes	20.76	39.0%	146	46	58	4.64	108
**13B2	Bluford silt loam, 2 to 5 percent slopes, eroded	10.61	19.9%	**129	**42	**52	**3.22	**96
13A	Bluford silt loam, 0 to 2 percent slopes	8.40	15.8%	136	44	55	3.39	101
109A	Raccoon silt loam, 0 to 2 percent slopes	4.80	9.0%	144	46	56	0.00	106
**3B2	Hoyleton silt loam, 2 to 5 percent slopes, eroded	3.85	7.2%	**139	**44	**55	**4.41	**103
**5C3	Blair silty clay loam, 5 to 10 percent slopes, severely eroded	3.00	5.6%	**102	**33	**41	**3.25	**77
**14B2	Ava silt loam, 2 to 5 percent slopes, eroded	1.01	1.9%	**126	**41	**51	0.00	**93
**4B2	Richview silt loam, 2 to 5 percent slopes, eroded	0.83	1.6%	**144	**46	**57	0.00	**105
<b>Weighted Average</b>				<b>137.5</b>	<b>43.9</b>	<b>54.8</b>	<b>3.49</b>	<b>101.9</b>

**Table: Optimum Crop Productivity Ratings for Illinois Soil by K.R. Olson and J.M. Lang, Office of Research, ACES, University of Illinois at Champaign-Urbana.** Version: 1/2/2012 Amended Table S2 B811

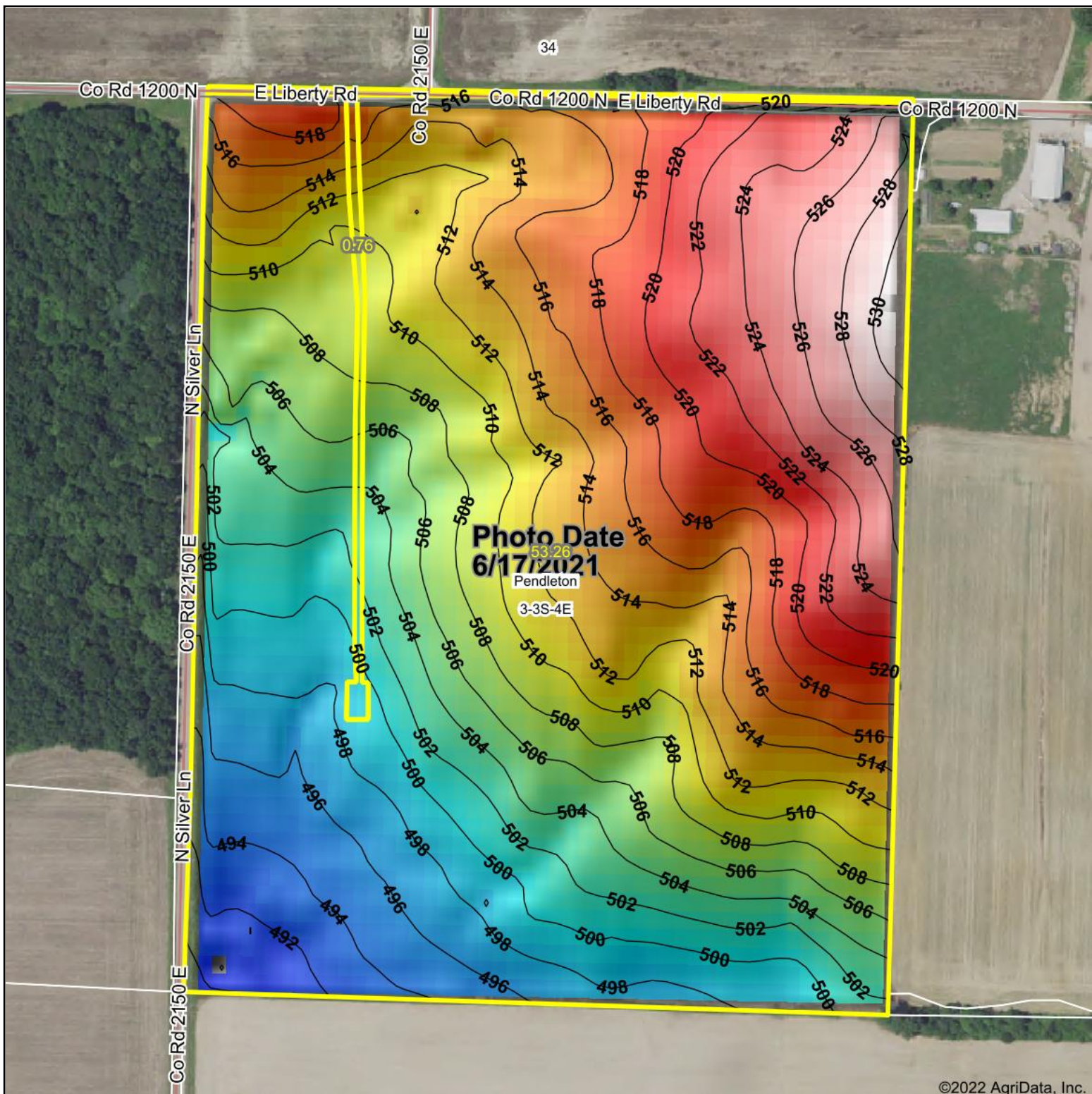
Crop yields and productivity indices for optimum management (B811) are maintained at the following NRES web site: <http://soilproductivity.nres.illinois.edu/>

\*\* Indexes adjusted for slope and erosion according to Bulletin 811 Table S3

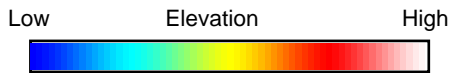
e Soils in the well drained group were not rated for grass-legume and are shown with a zero "0".

Soils data provided by USDA and NRCS. Soils data provided by University of Illinois at Champaign-Urbana.

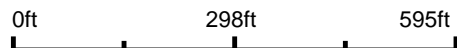
# Topography Hillshade



©2022 AgriData, Inc.



Source: USGS 10 meter dem



Interval(ft): 2

Min: 489.6

Max: 531.5

Range: 41.9

Average: 510.1

Standard Deviation: 9.51 ft



9/29/2022

**3-3S-4E**  
**Jefferson County**  
**Illinois**

map center: 38° 17' 45.74, -88° 44' 47.53



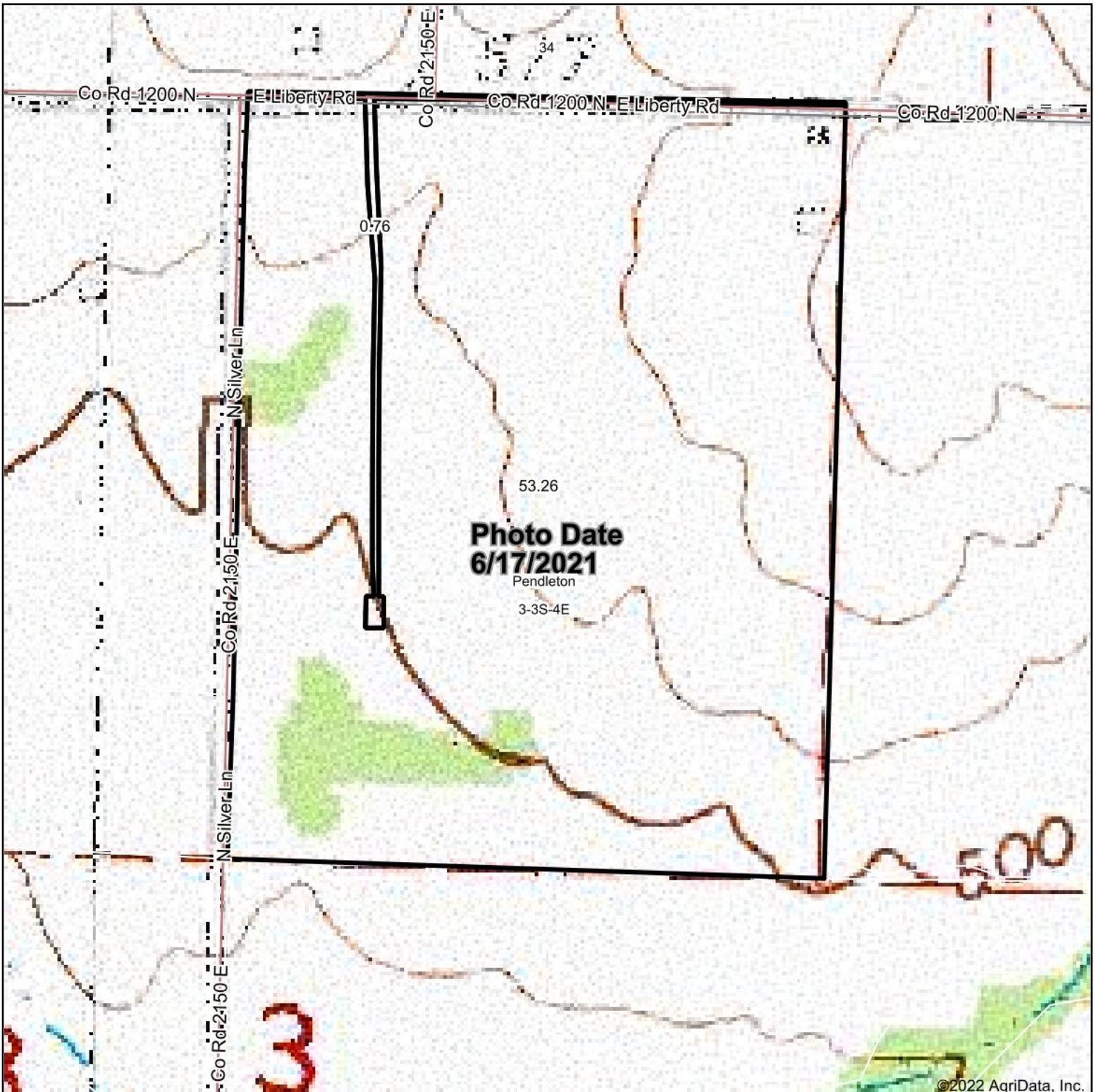
Maps Provided By:



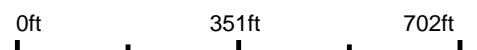
© AgriData, Inc. 2021 www.AgriDataInc.com

Field borders provided by Farm Service Agency as of 5/21/2008.

# Topography Map



map center: 38° 17' 45.74, -88° 44' 47.53



**3-3S-4E**  
**Jefferson County**  
**Illinois**



9/29/2022



Maps Provided By:



© AgriData, Inc. 2021

www.AgriDataInc.com

Field borders provided by Farm Service Agency as of 5/21/2008.