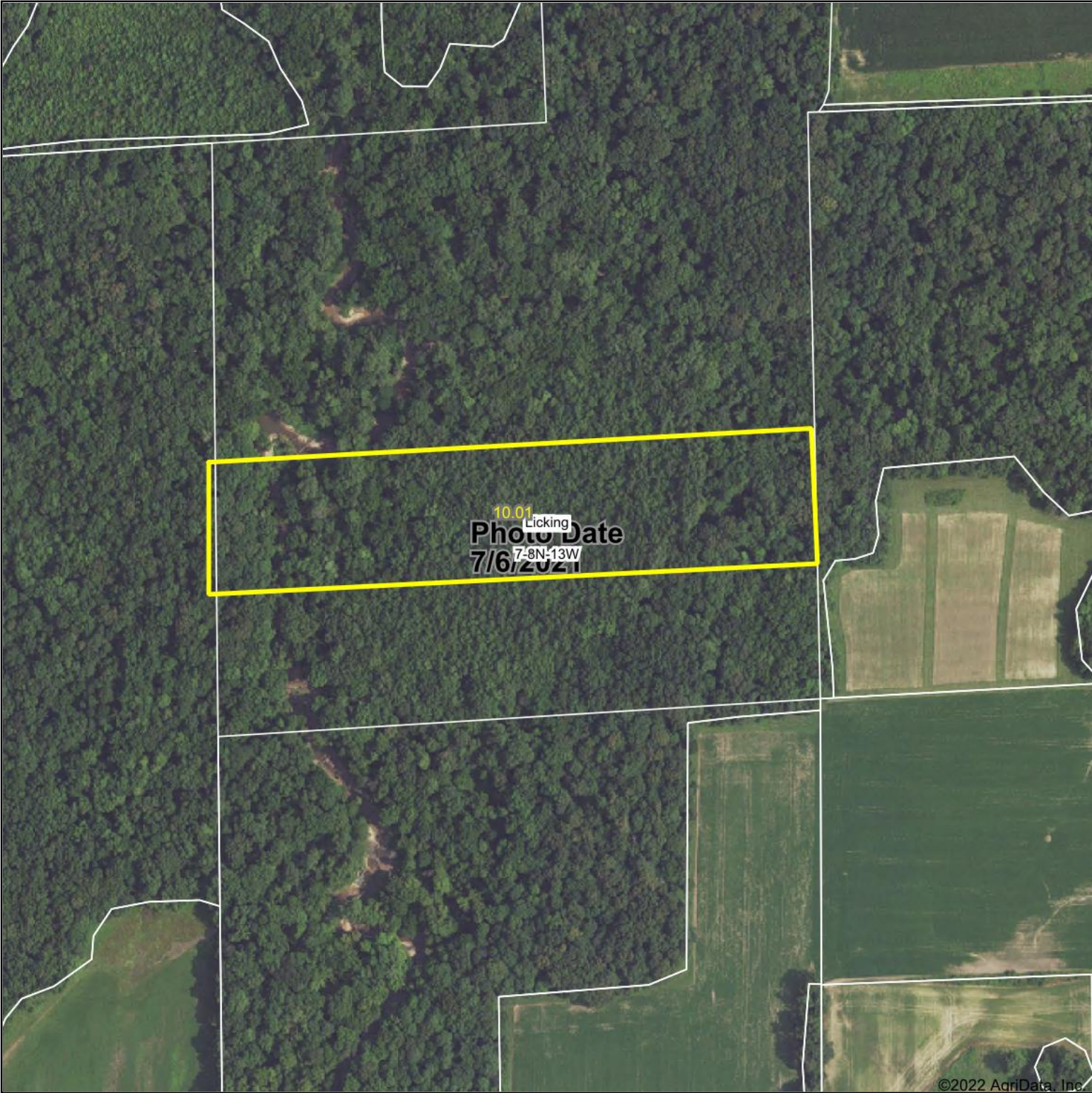
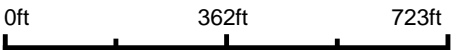


Aerial Map



©2022 AgriData, Inc.

Map Center: 39° 8' 59.3, -87° 54' 1.11



**7-8N-13W**  
**Crawford County**  
**Illinois**



Maps Provided By:  
 **surety**  
CUSTOMIZED ONLINE MAPPING  
© AgriData, Inc. 2021      www.AgriDataInc.com

Field borders provided by Farm Service Agency as of 5/21/2008.

# Aerial Map



Map Center: 39° 9' 8.07, -87° 54' 10.41

0ft 843ft 1686ft

**7-8N-13W**  
**Crawford County**  
**Illinois**



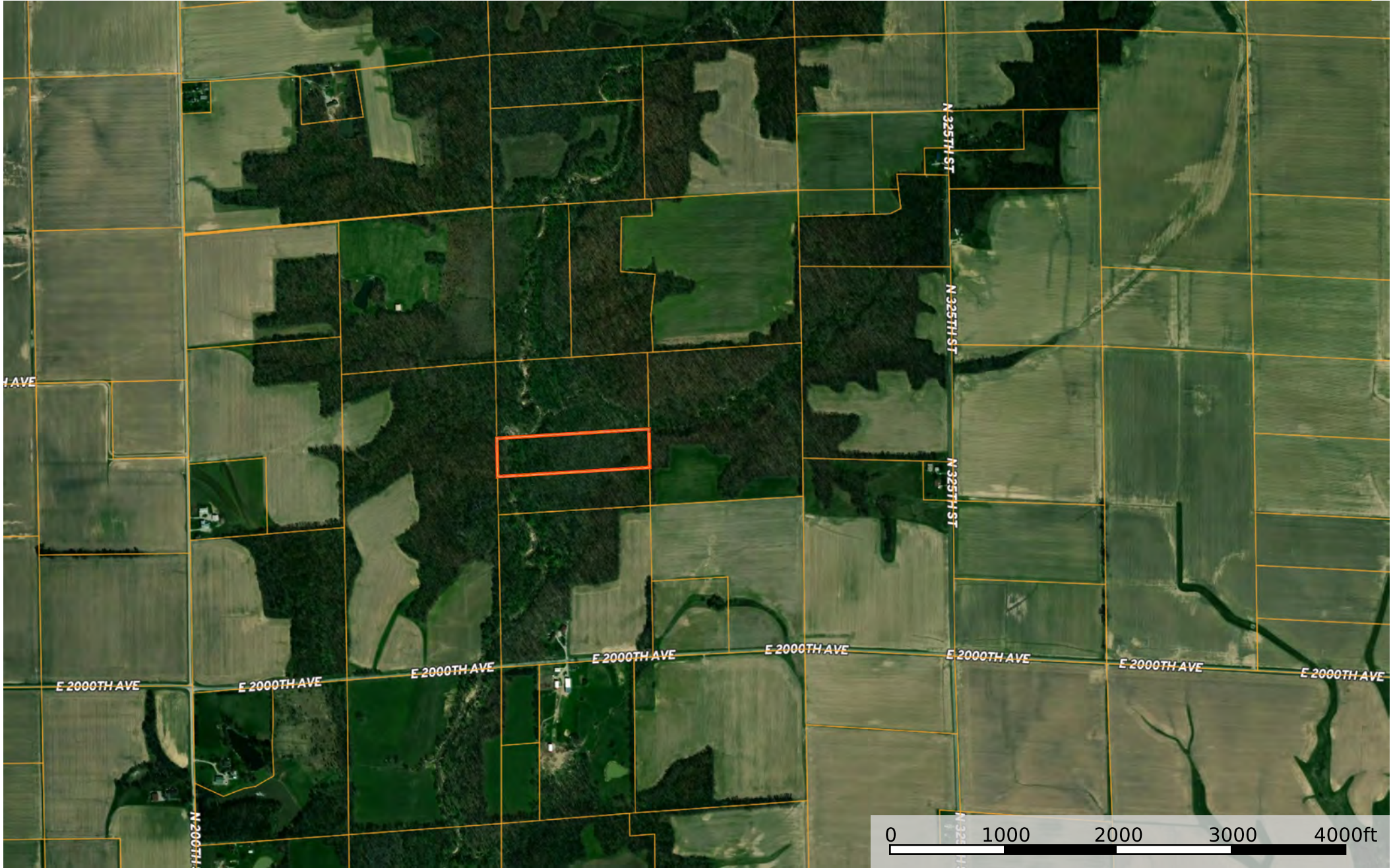
Maps Provided By:




© AgriData, Inc. 2021

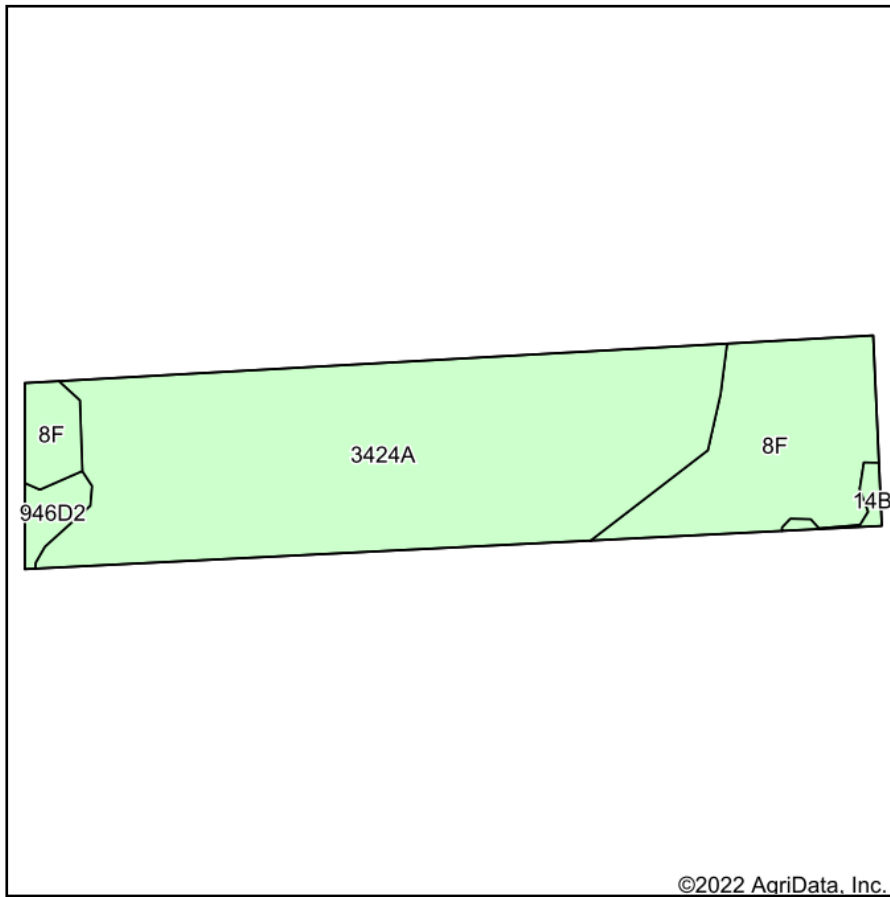
www.AgriDataInc.com

Field borders provided by Farm Service Agency as of 5/21/2008.

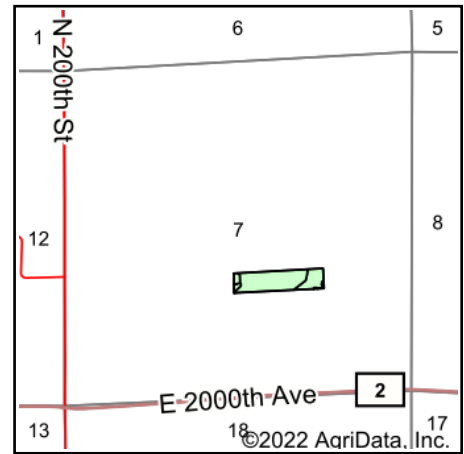


 Boundary

# Soils Map



Soils data provided by USDA and NRCS.



State: **Illinois**  
 County: **Crawford**  
 Location: **7-8N-13W**  
 Township: **Licking**  
 Acres: **10.01**  
 Date: **8/11/2022**



Maps Provided By:



Area Symbol: IL033, Soil Area Version: 19

Code	Soil Description	Acres	Percent of field	Corn Bu/A	Soybeans Bu/A	Wheat Bu/A	Grass-legume e hay, T/A	Crop productivity index for optimum management
3424A	Shoals silt loam, 0 to 2 percent slopes, frequently flooded	7.19	71.8%	174	55	69	5.27	127
**8F	Hickory silt loam, 18 to 35 percent slopes	2.50	25.0%	**86	**29	**35	0.00	**65
**946D2	Hickory-Atlas complex, 10 to 18 percent slopes, eroded	0.23	2.3%	**100	**34	**40	**3.20	**76
**14B	Ava silt loam, 2 to 5 percent slopes	0.09	0.9%	**134	**44	**54	0.00	**99
<b>Weighted Average</b>				<b>150</b>	<b>47.9</b>	<b>59.7</b>	<b>3.86</b>	<b>110.1</b>

**Table: Optimum Crop Productivity Ratings for Illinois Soil by K.R. Olson and J.M. Lang, Office of Research, ACES, University of Illinois at Champaign-Urbana.** Version: 1/2/2012 Amended Table S2 B811

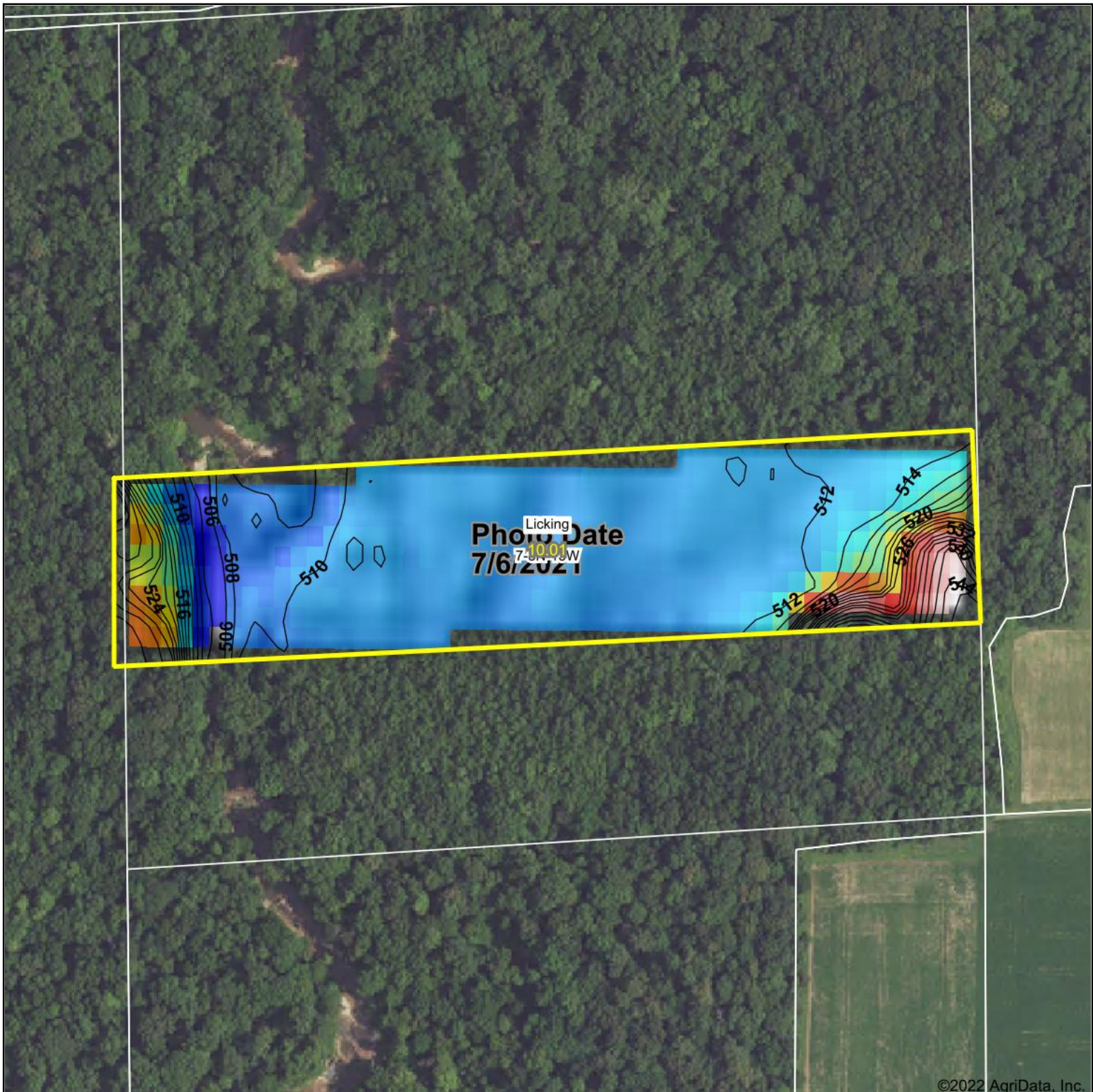
Crop yields and productivity indices for optimum management (B811) are maintained at the following NRES web site: <http://soilproductivity.nres.illinois.edu/>

\*\* Indexes adjusted for slope and erosion according to Bulletin 811 Table S3

e Soils in the well drained group were not rated for grass-legume and are shown with a zero "0".

Soils data provided by USDA and NRCS. Soils data provided by University of Illinois at Champaign-Urbana.

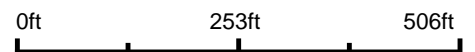
# Topography Hillshade



©2022 AgriData, Inc.



Source: USGS 10 meter dem  
Interval(ft): 2  
Min: 505.0  
Max: 547.5  
Range: 42.5  
Average: 514.2  
Standard Deviation: 7.94 ft



8/11/2022

**7-8N-13W**  
**Crawford County**  
**Illinois**

map center: 39° 8' 59.3, -87° 54' 1.11



Maps Provided By:

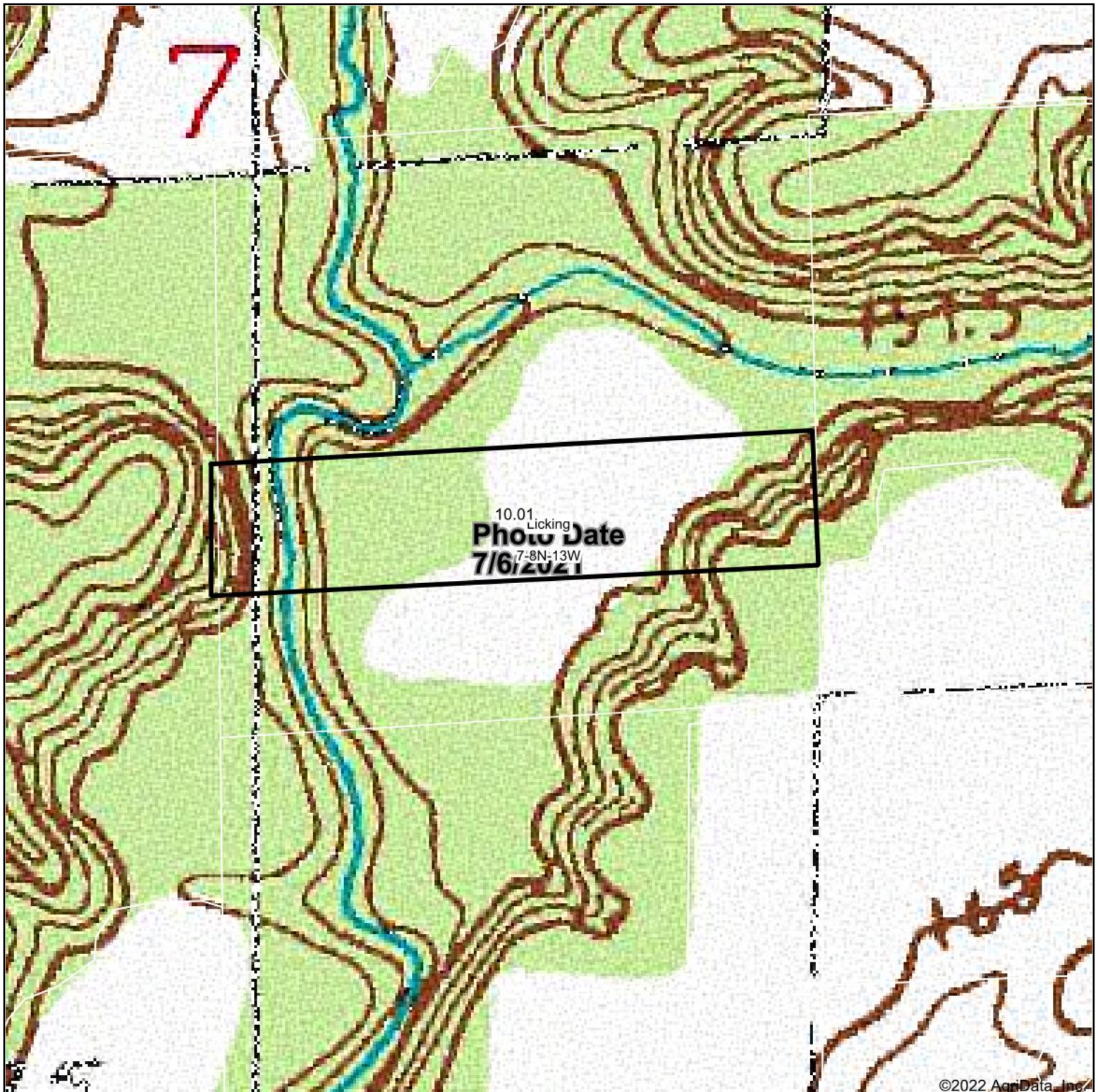


© AgriData, Inc. 2021

www.AgriDataInc.com

Field borders provided by Farm Service Agency as of 5/21/2008.

# Topography Map



©2022 AgriData, Inc.

map center: 39° 8' 59.3, -87° 54' 1.11

0ft 362ft 723ft



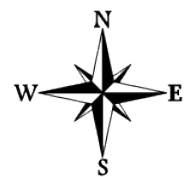
Maps Provided By:



© AgriData, Inc. 2021

www.AgriDataInc.com

**7-8N-13W**  
**Crawford County**  
**Illinois**



8/11/2022

Field borders provided by Farm Service Agency as of 5/21/2008.