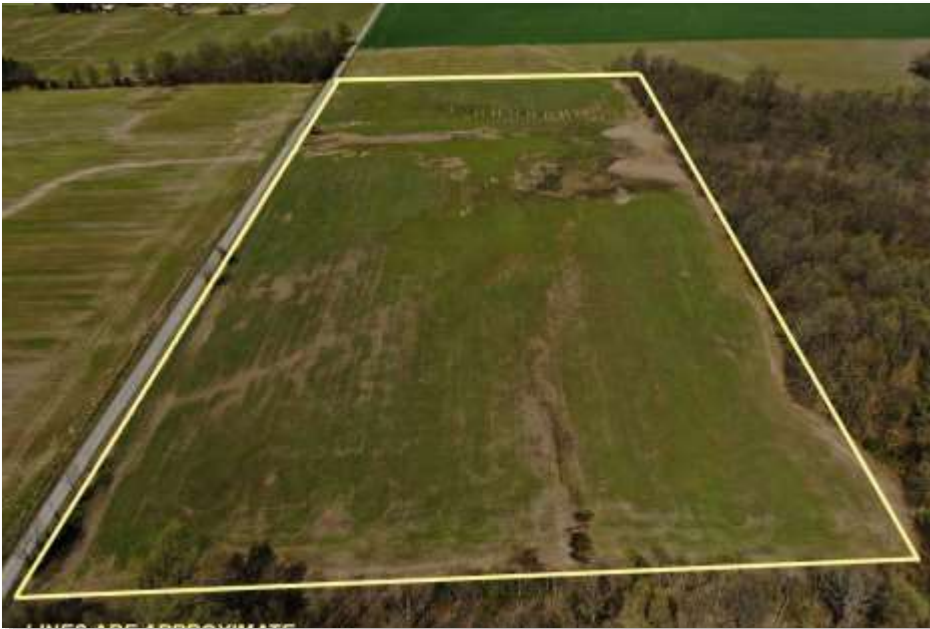


FOR SALE: 20+- Acres Saline County IL Well Maintained Farmland



Don Bailey

Managing Broker

Cell: 618-919-1031

[dbailey@buyafarm.com](mailto:d Bailey@buyafarm.com)

Sparta Main Office

Flora Branch Office



buyafarm.com

PROPERTY DETAILS (2692AL)

Address: Banklick Road, East of Corinth IL

List Price: \$110,000 / \$5500 Per Acre

Well-maintained farmland with approximately 17.95 acres in cropland. Lays flat with drainage to the east. Frontage on Banklick Road.

Part of Section 18, T8S-R5E, Galatia Twp., Saline County

Taxes: \$284.54

Specializing in Rural Real Estate Sales and Auctions
MAIN OFFICE: 1403 Hillcrest Drive, Sparta IL 62286 / 800-443-1998