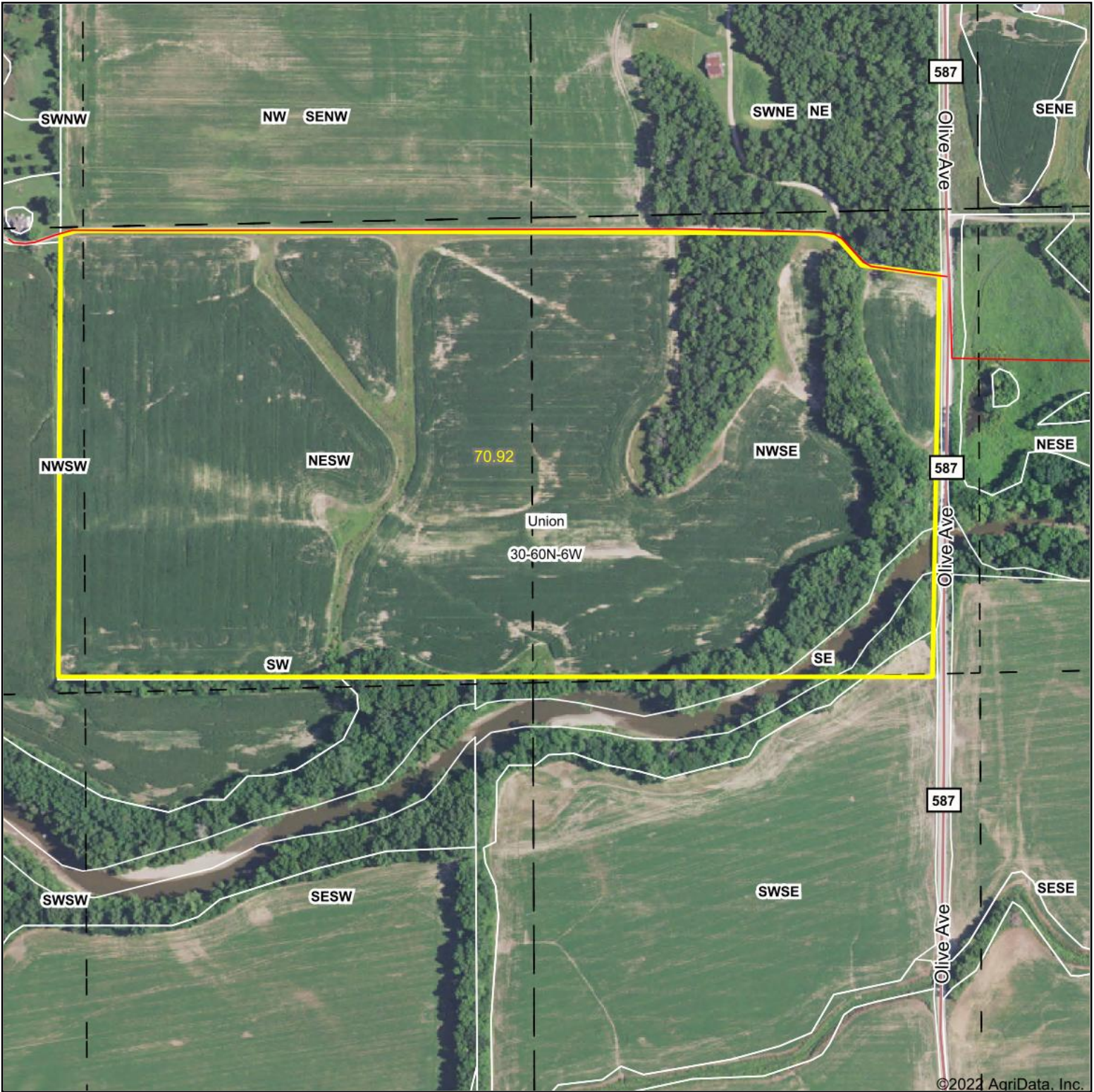


Aerial Map



©2021 AgriData, Inc.

Map Center: 39° 57' 58.51, -91° 36' 27.97



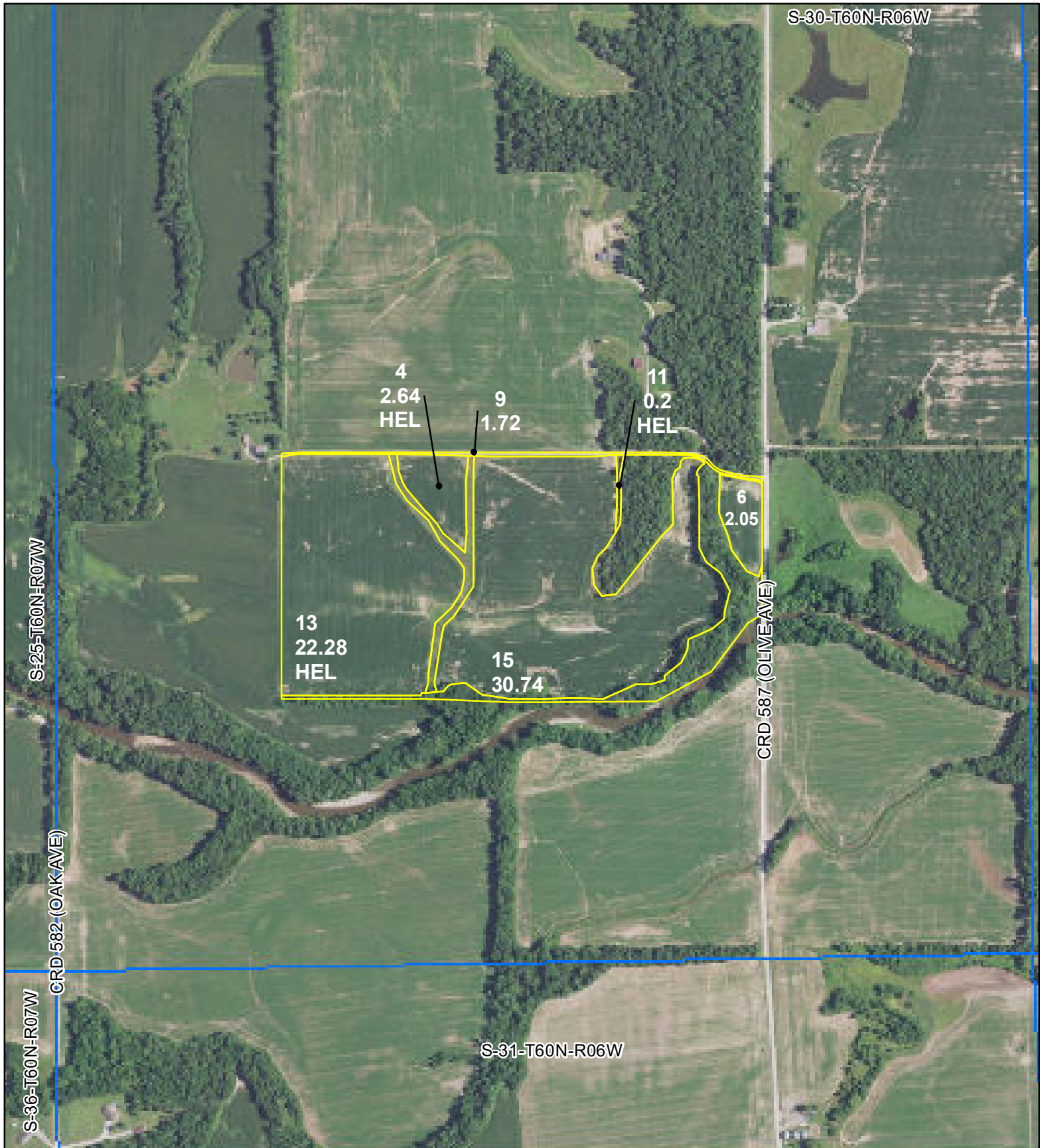
30-60N-6W
Lewis County
Missouri



7/11/2022

Maps Provided By:
 surety
CUSTOMIZED ONLINE MAPPING
© AgriData, Inc. 2021 www.AgriDataInc.com

Field borders provided by Farm Service Agency as of 5/21/2008.



All Measurements are
For FSA Programs Only

Wetland Determination Identifiers

- Restricted Use
- ▼ Limited Restrictions
- Exempt from Conservation Compliance Provisions

Disclaimer: Wetland identifiers do not represent the size, shape or specific determination of the area. Refer to your original determination (CPA-026 and attached maps) for exact wetland boundaries and determinations, or contact NRCS.

Marion Co. FSA

wht=wheat-SRW-GR
 C=corn-YEL-GR
 SB=soybn-COM-GR
 P=mixfg-GZ
 H=mixfg-FG
 LS=mixfg-LS
 All flds NI
 *Notations on map supersede the legend
 *Unless notated on Map

1:7,920

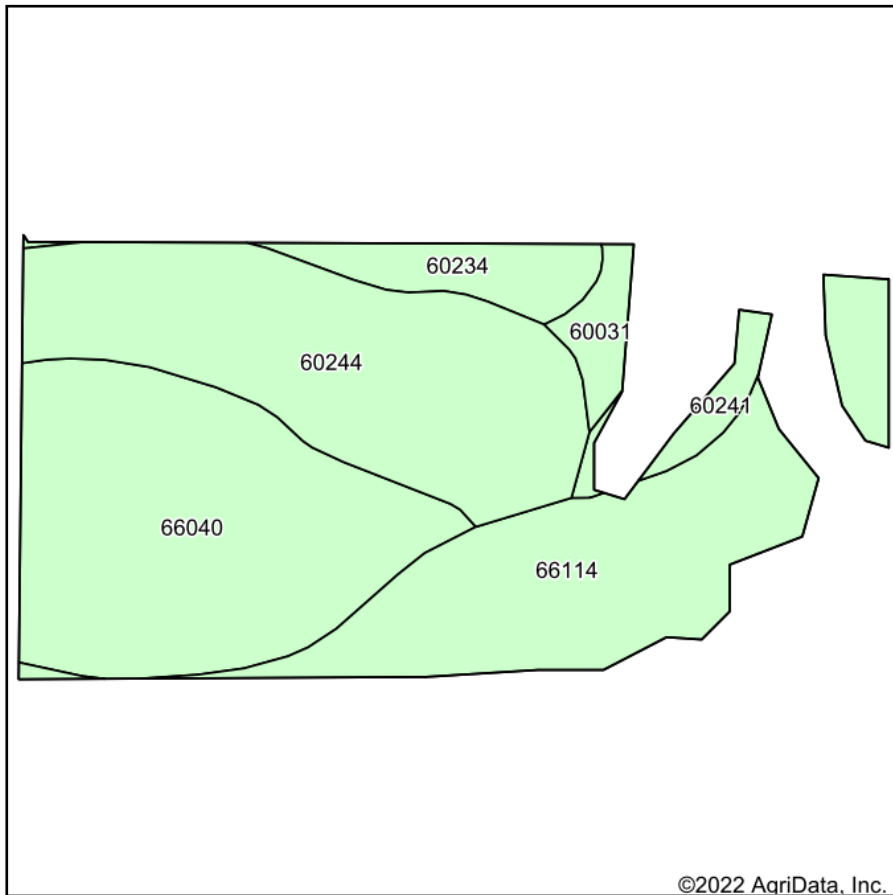
Program Year: 2022
 Created: 10/15/2021
 Flown: 2020-07-10



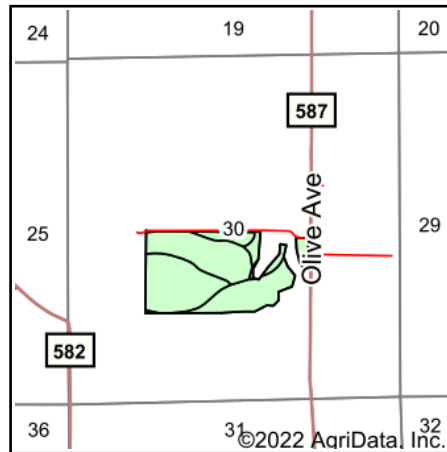
- clu
- crp
- plss

Farm 3779
Tract 3530

Soils Map



Soils data provided by USDA and NRCS.



State: **Missouri**
 County: **Lewis**
 Location: **30-60N-6W**
 Township: **Union**
 Acres: **56.81**
 Date: **7/11/2022**



Maps Provided By:



© AgriData, Inc. 2021

www.AgriDataInc.com



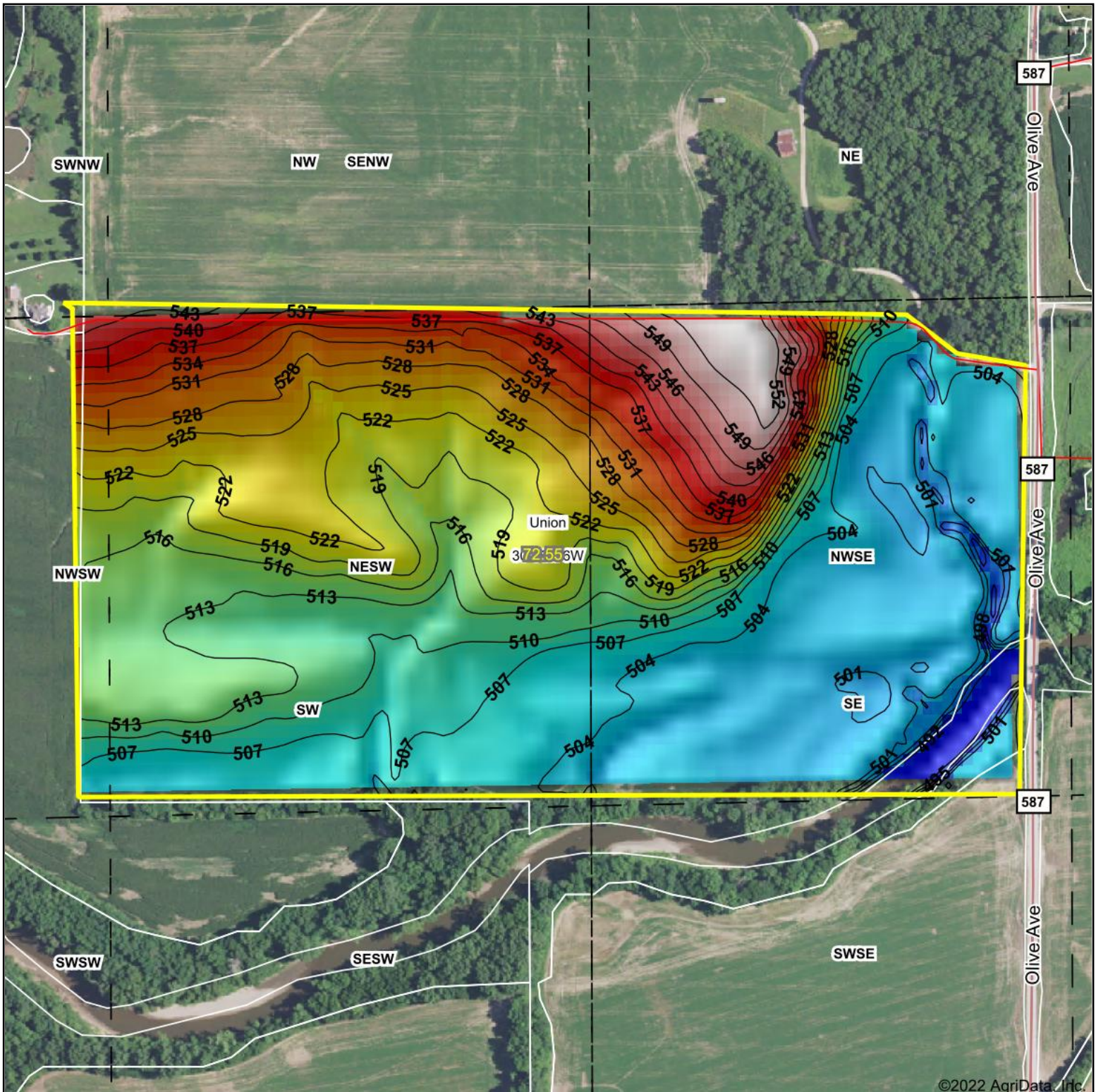
Area Symbol: MO111, Soil Area Version: 23

Code	Soil Description	Acres	Percent of field	Non-Irr Class	Corn Bu	Soybeans Bu	Wheat Bu	*n NCCPI Soybeans	
66040	Kickapoo fine sandy loam, 0 to 2 percent slopes, frequently flooded	18.82	33.1%	Illw				41	
60244	Winfield silt loam, 5 to 10 percent slopes, eroded	17.19	30.3%	IIIe	132	40	52	67	
66114	Westerville silt loam, 0 to 3 percent slopes, occasionally flooded	15.01	26.4%	Ilw				79	
60234	Weller silt loam, 2 to 5 percent slopes	2.98	5.2%	Ile				68	
60031	Winfield silt loam, 9 to 14 percent slopes, eroded	1.47	2.6%	VIe				60	
60241	Winfield silt loam, 14 to 25 percent slopes	1.34	2.4%	VIe				57	
Weighted Average					2.83	39.9	12.1	15.7	*n 61.2

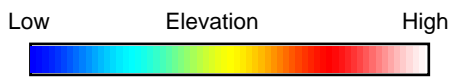
*n: The aggregation method is "Weighted Average using all components"

Soils data provided by USDA and NRCS.

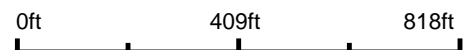
Topography Hillshade



©2022 AgriData, Inc.



Source: USGS 10 meter dem
 Interval(ft): 3
 Min: 489.5
 Max: 554.3
 Range: 64.8
 Average: 516.0
 Standard Deviation: 13.81 ft



7/11/2022

30-60N-6W
Lewis County
Missouri

map center: 39° 58' 1.87, -91° 36' 29.86



Maps Provided By:



© AgriData, Inc. 2021 www.AgriDataInc.com

Field borders provided by Farm Service Agency as of 5/21/2008.