

# Aerial Map



©2021 AgriData, Inc.

Map Center: 37° 40' 48.37, -88° 51' 29.32



Maps Provided By:



© AgriData, Inc. 2021 www.AgriDataInc.com

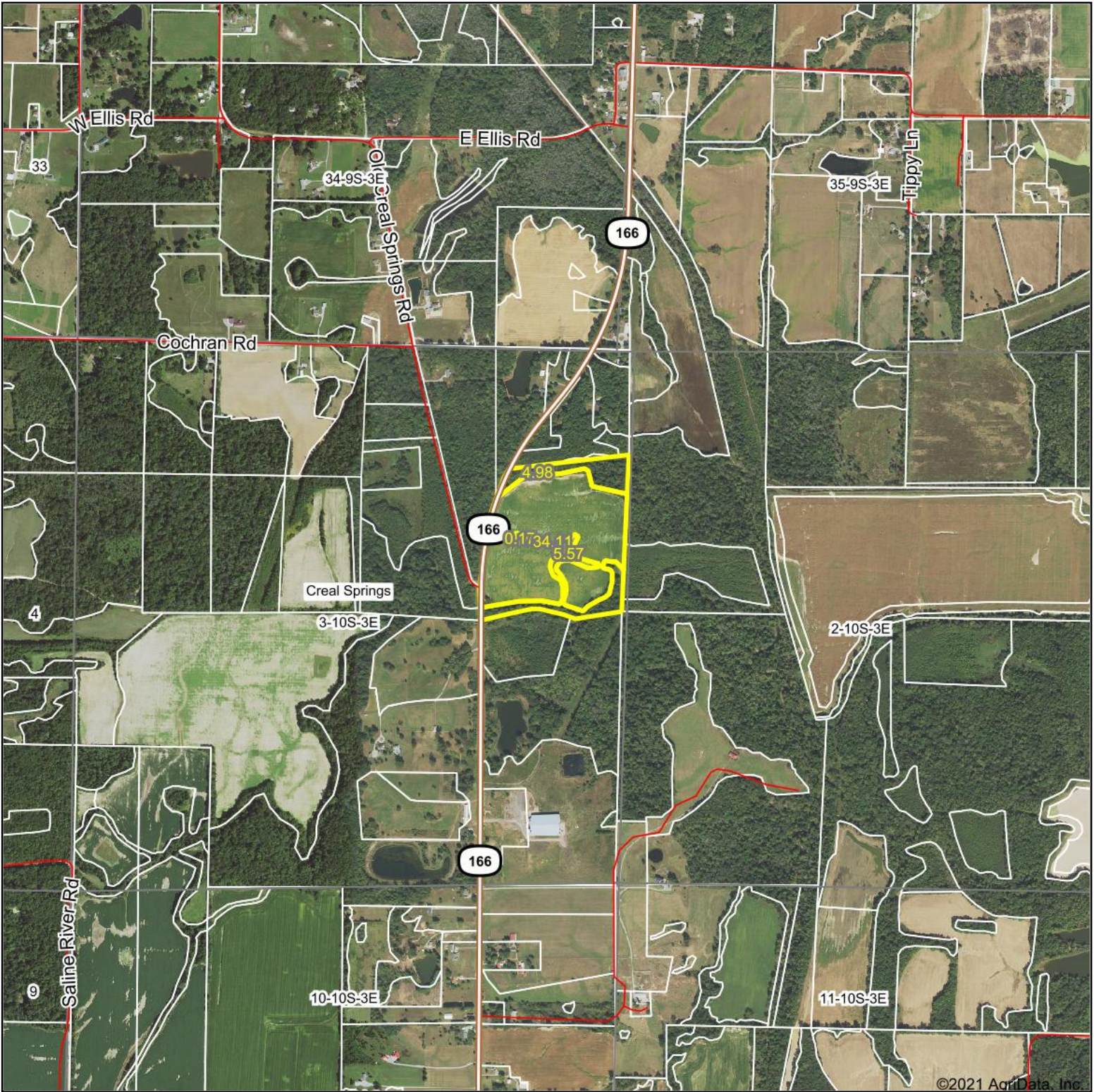
**3-10S-3E**  
**Williamson County**  
**Illinois**



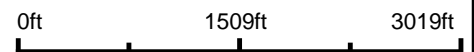
5/12/2021

Field borders provided by Farm Service Agency as of 5/21/2008.

# Aerial Map

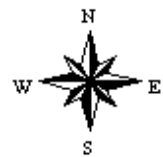


Map Center: 37° 40' 47.92, -88° 51' 29.31



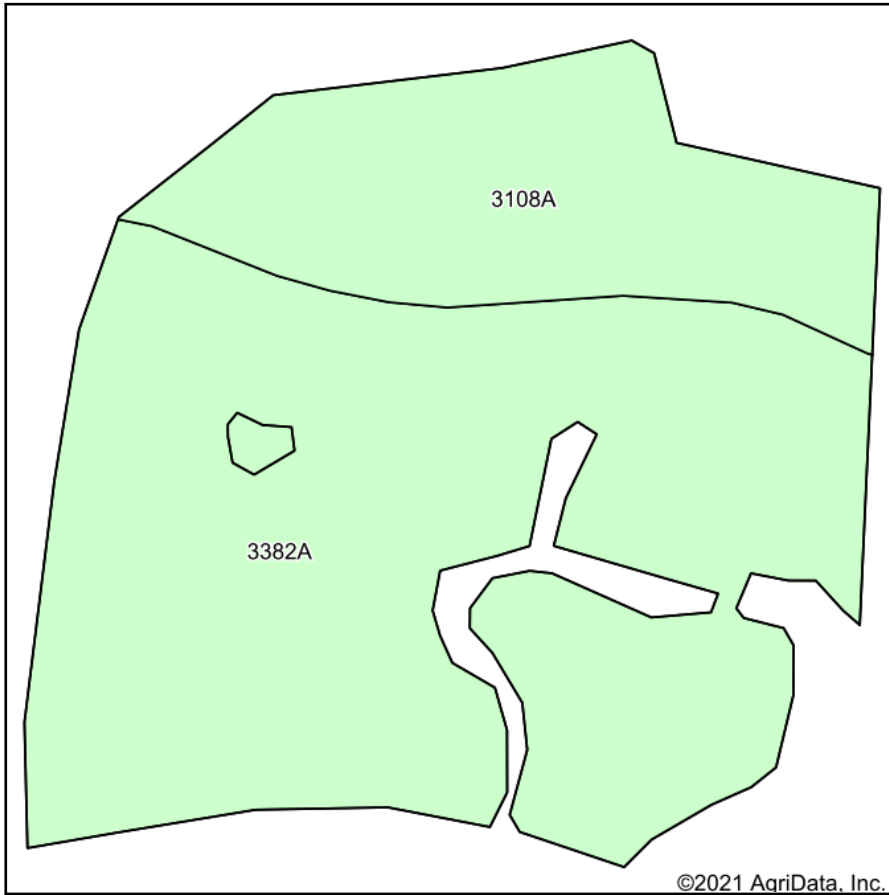
Maps Provided By:  
 **surety**<sup>®</sup>  
CUSTOMIZED ONLINE MAPPING  
© AgriData, Inc. 2021 www.AgriDataInc.com

**3-10S-3E**  
**Williamson County**  
**Illinois**

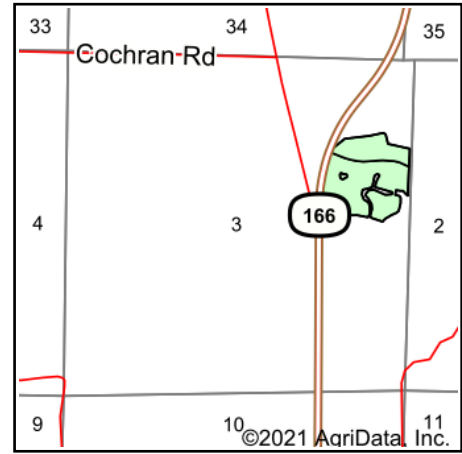


5/12/2021

# Soils Map



Soils data provided by USDA and NRCS.



State: **Illinois**  
 County: **Williamson**  
 Location: **3-10S-3E**  
 Township: **Creal Springs**  
 Acres: **34.28**  
 Date: **5/12/2021**



Maps Provided By:



Area Symbol: IL199, Soil Area Version: 15

Code	Soil Description	Acres	Percent of field	Corn Bu/A	Soybeans Bu/A	Wheat Bu/A	Grass-legume e hay, T/A	Crop productivity index for optimum management
3382A	Belknap silt loam, 0 to 2 percent slopes, frequently flooded	25.55	74.5%	156	52	63	4.89	117
3108A	Bonnie silt loam, 0 to 2 percent slopes, frequently flooded	8.73	25.5%	149	49	59	4.64	111
<b>Weighted Average</b>				<b>154.2</b>	<b>51.2</b>	<b>62</b>	<b>4.83</b>	<b>115.5</b>

**Table: Optimum Crop Productivity Ratings for Illinois Soil by K.R. Olson and J.M. Lang, Office of Research, ACES, University of Illinois at Champaign-Urbana.** Version: 1/2/2012 Amended Table S2 B811

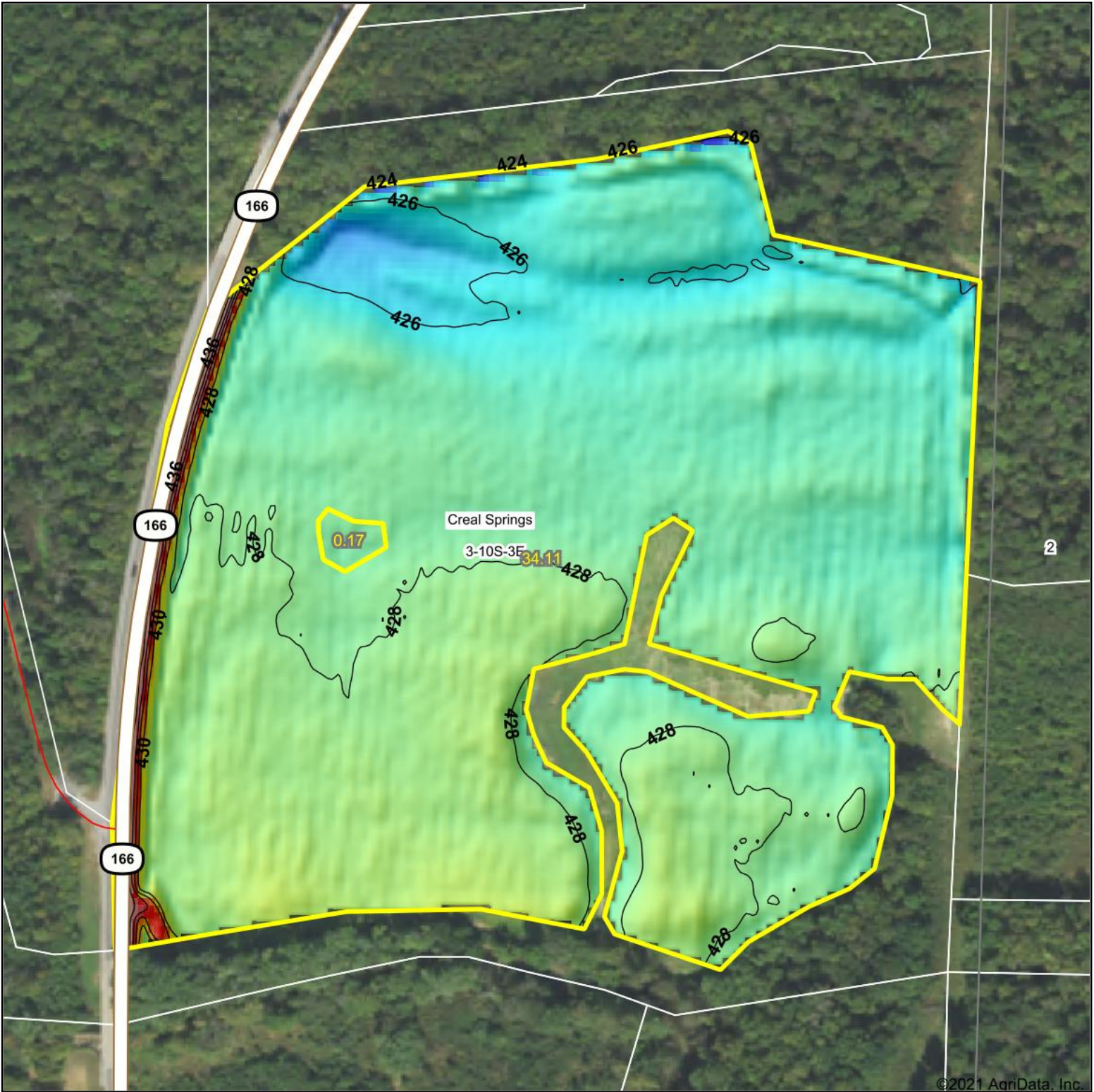
Crop yields and productivity indices for optimum management (B811) are maintained at the following NRES web site: <http://soilproductivity.nres.illinois.edu/>

\*\* Indexes adjusted for slope and erosion according to Bulletin 811 Table S3

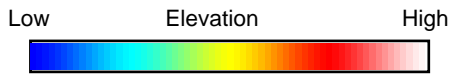
**e** Soils in the well drained group were not rated for grass-legume and are shown with a zero "0".

\*c: Using Capabilities Class Dominant Condition Aggregation Method

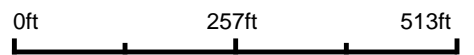
Soils data provided by USDA and NRCS. Soils data provided by University of Illinois at Champaign-Urbana.



©2021 AgriData, Inc.



Source: USGS 3 meter dem  
 Interval(ft): 2  
 Min: 422.0  
 Max: 438.0  
 Range: 16.0  
 Average: 427.8  
 Standard Deviation: 1.64 ft



**3-10S-3E**  
**Williamson County**  
**Illinois**

map center: 37° 40' 46.05, -88° 51' 30.61



Maps Provided By:



© AgriData, Inc. 2021 www.AgriDataInc.com

Field borders provided by Farm Service Agency as of 5/21/2008.