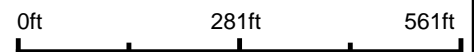


Aerial Map



Map Center: 37° 49' 16.07, -88° 42' 33.45

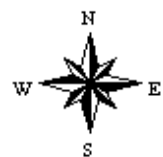


Maps Provided By:



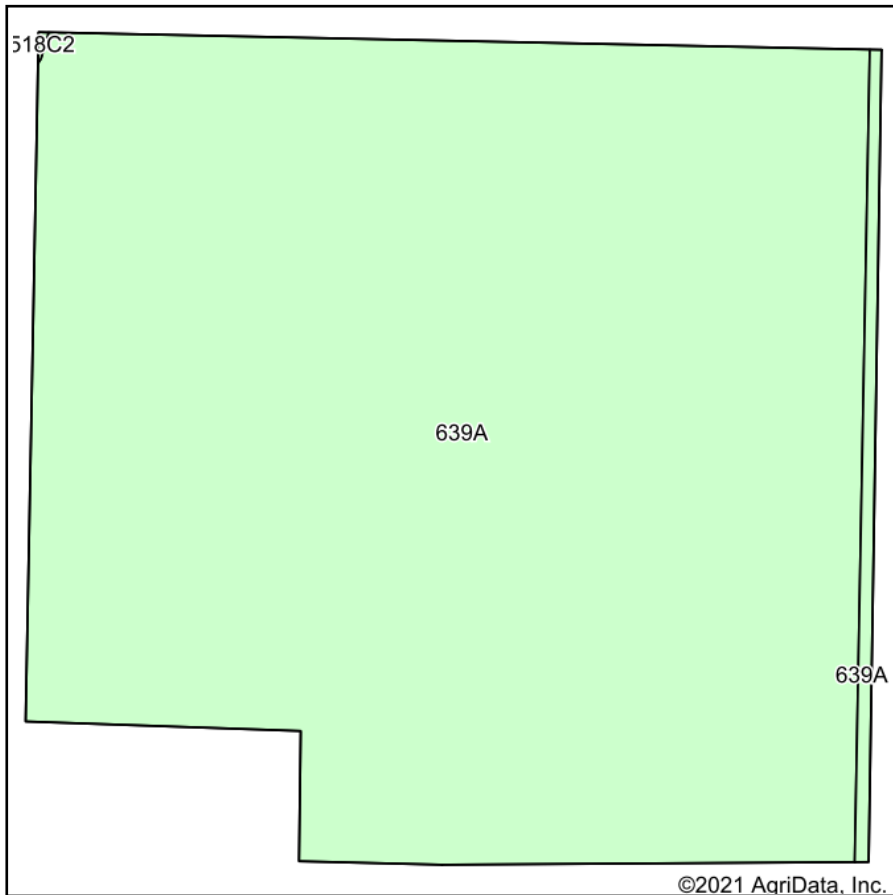
© AgriData, Inc. 2021 www.AgriDataInc.com

13-8S-4E
Williamson County
Illinois

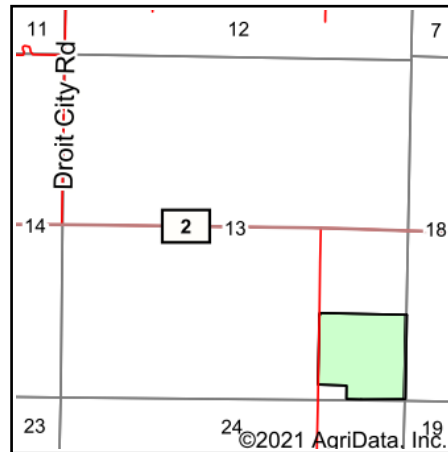


4/15/2021

Soils Map



Soils data provided by USDA and NRCS.



State: **Illinois**
 County: **Williamson**
 Location: **13-8S-4E**
 Township: **Corinth**
 Acres: **39.63**
 Date: **4/15/2021**



Maps Provided By:



Area Symbol: IL165, Soil Area Version: 15
 Area Symbol: IL199, Soil Area Version: 15

Code	Soil Description	Acres	Percent of field	Corn Bu/A	Soybeans Bu/A	Wheat Bu/A	Grass-legume & hay, T/A	Crop productivity index for optimum management
639A	Wynooose silt loam, bench, 0 to 2 percent slopes	39.00	98.4%	128	40	51	4.26	95
639A	Wynooose silt loam, bench, 0 to 2 percent slopes	0.63	1.6%	128	40	51	4.26	95
Weighted Average				128	40	51	4.26	95

Table: Optimum Crop Productivity Ratings for Illinois Soil by K.R. Olson and J.M. Lang, Office of Research, ACES, University of Illinois at Champaign-Urbana. Version: 1/2/2012 Amended Table S2 B811

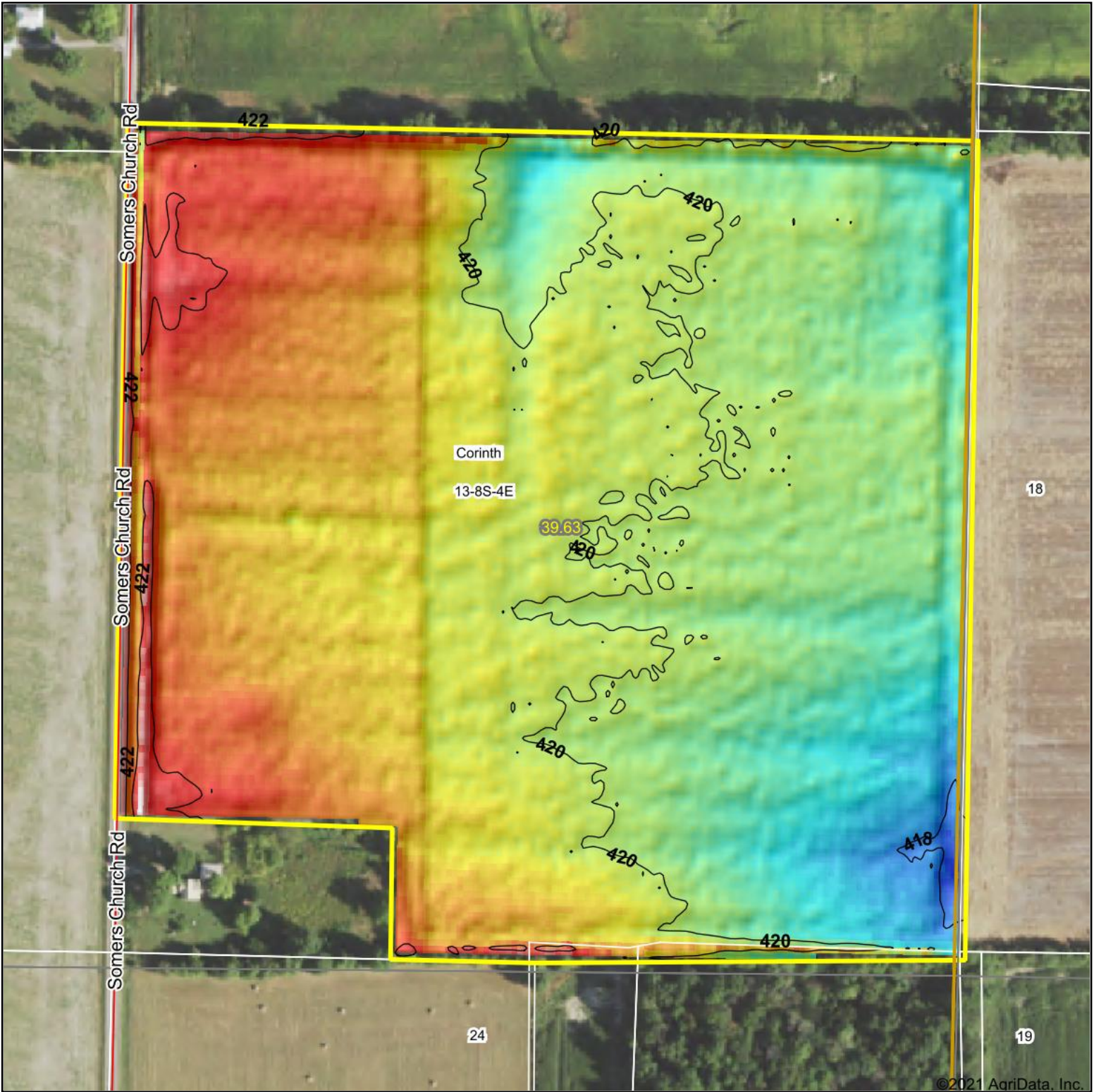
Crop yields and productivity indices for optimum management (B811) are maintained at the following NRES web site: <http://soilproductivity.nres.illinois.edu/>

** Indexes adjusted for slope and erosion according to Bulletin 811 Table S3

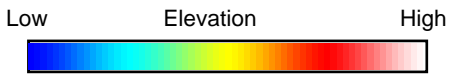
e Soils in the well drained group were not rated for grass-legume and are shown with a zero "0".

*c: Using Capabilities Class Dominant Condition Aggregation Method

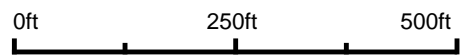
Soils data provided by USDA and NRCS. Soils data provided by University of Illinois at Champaign-Urbana.



©2021 AgriData, Inc.



Source: USGS 3 meter dem
 Interval(ft): 2
 Min: 417.2
 Max: 423.6
 Range: 6.4
 Average: 420.2
 Standard Deviation: 0.89 ft



13-8S-4E
Williamson County
Illinois

4/15/2021

map center: 37° 49' 16.07, -88° 42' 33.45



Maps Provided By:



© AgriData, Inc. 2021 www.AgriDataInc.com

Field borders provided by Farm Service Agency as of 5/21/2008.