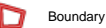
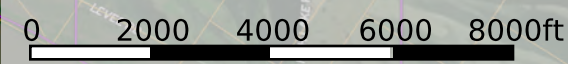
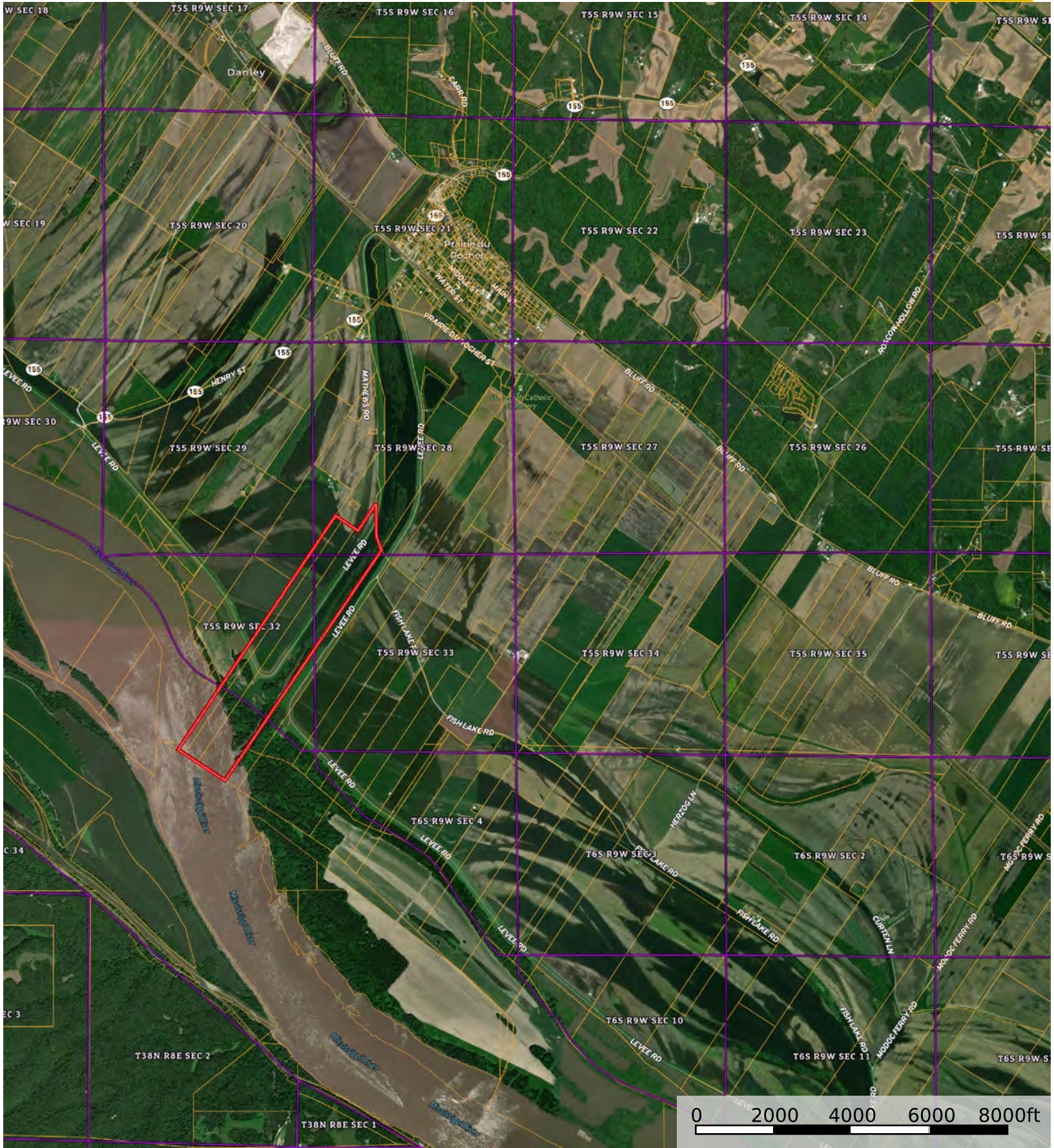


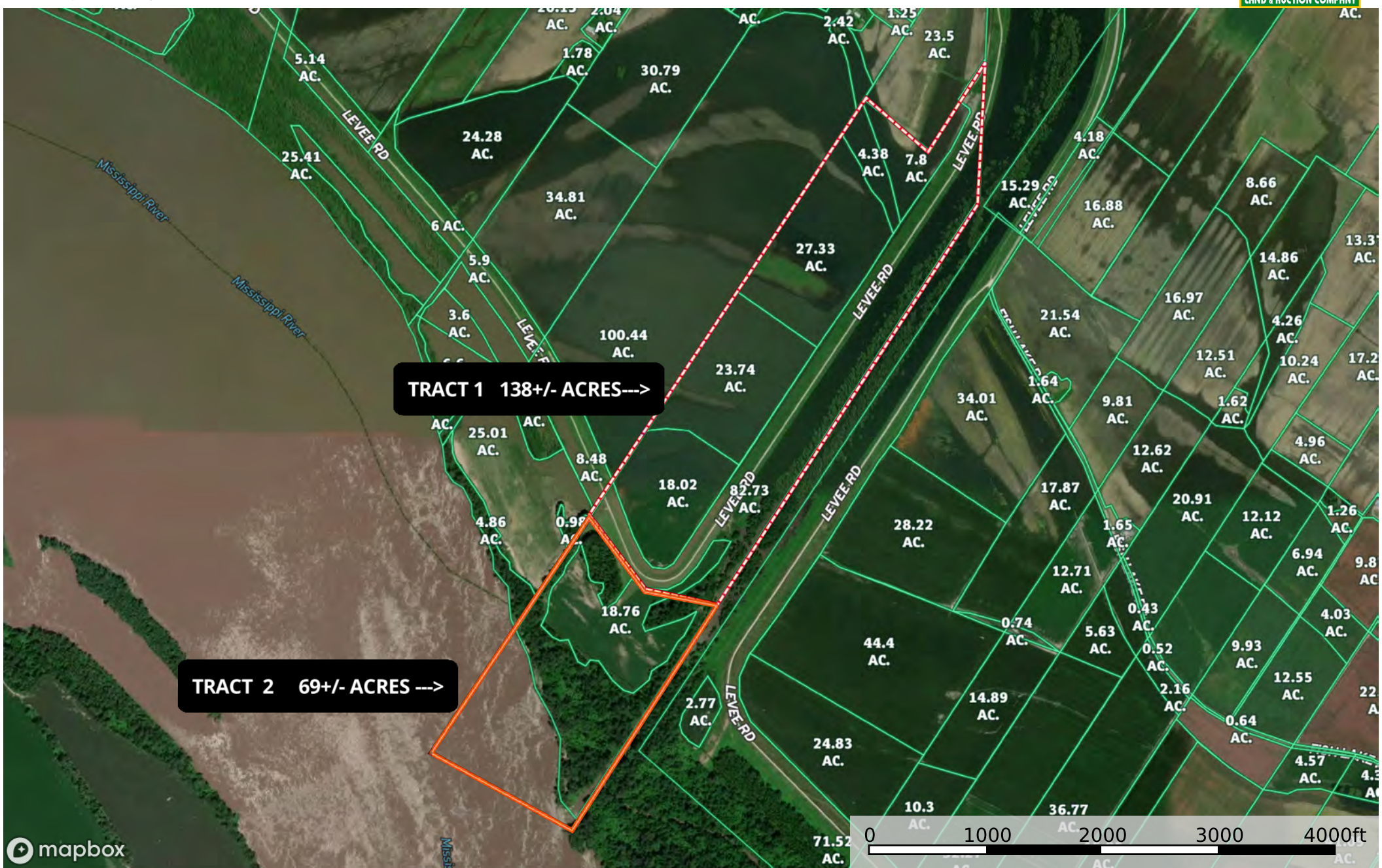
 Boundary



blake prairie du rocher 207
Randolph County, Illinois, 207 AC +/-

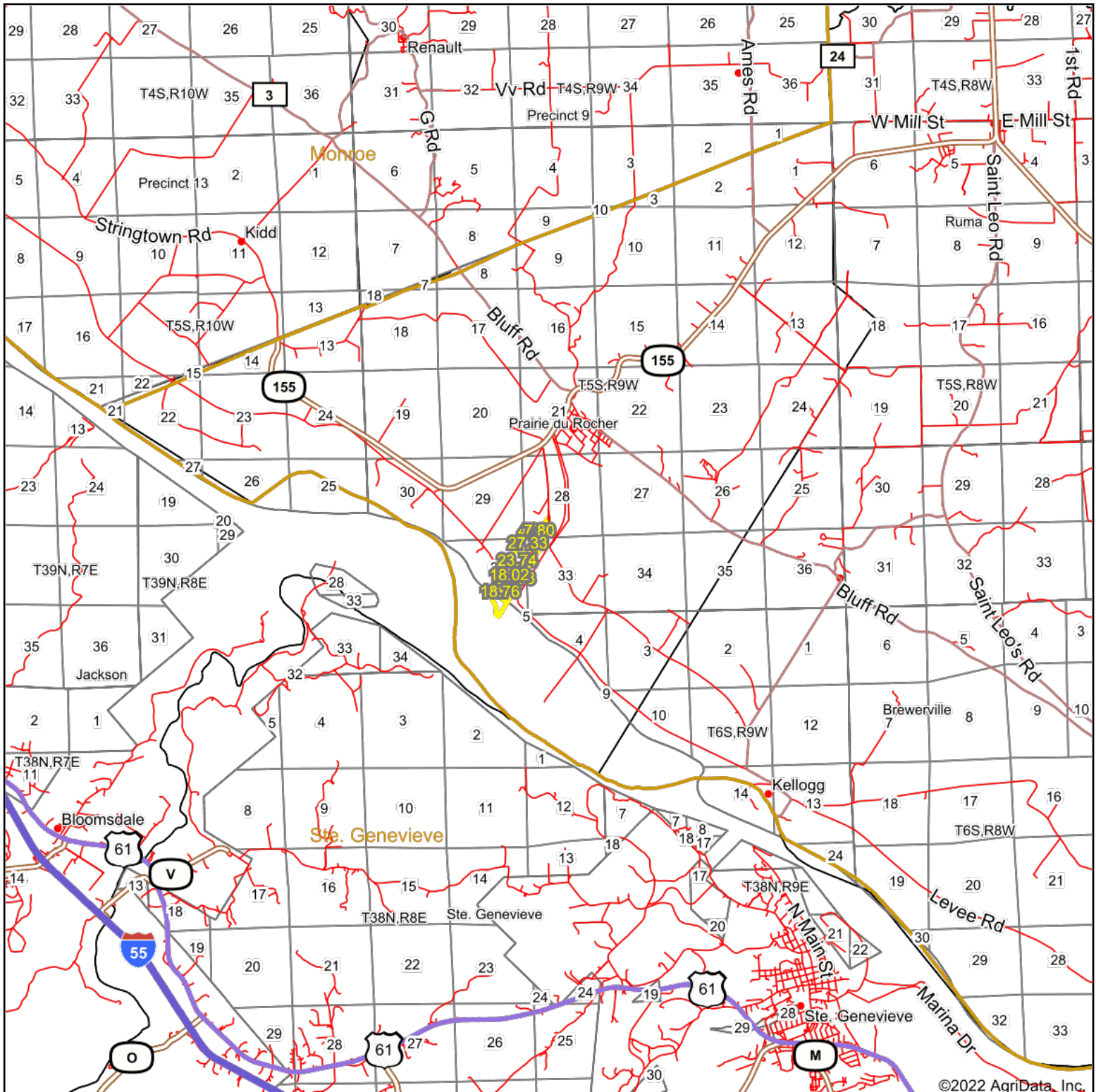


Boundary



Boundary Boundary

Overview Map



map center: 38° 3' 34.66, -90° 6' 15

0ft 10325ft 20649ft



Maps Provided By



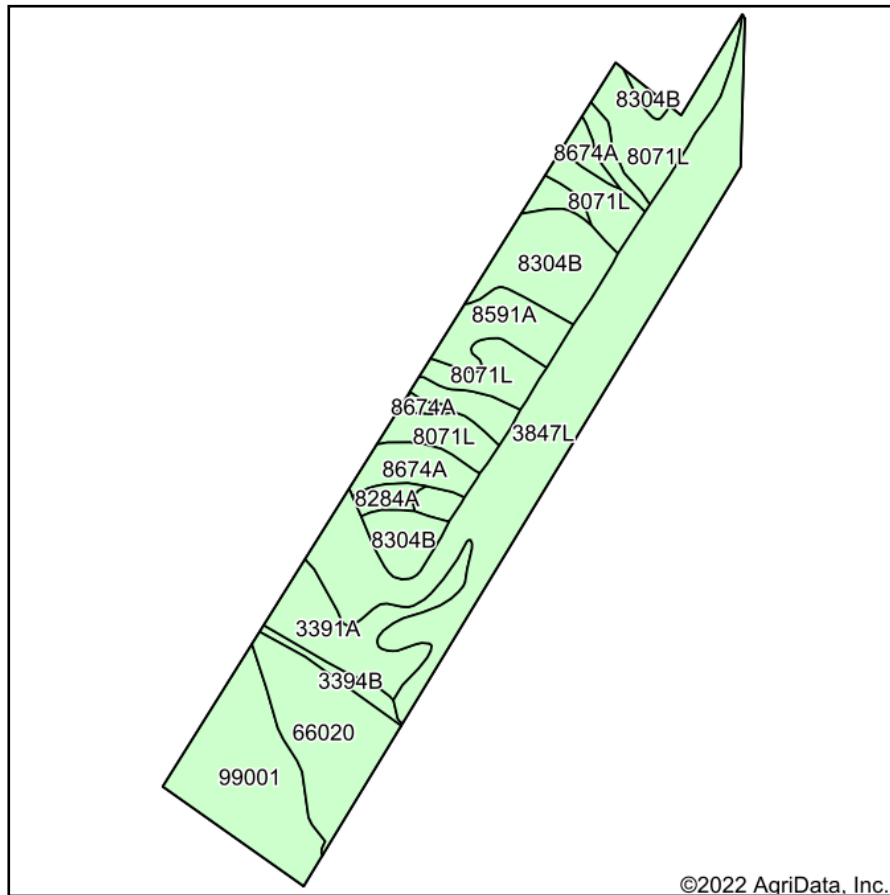
© AgriData, Inc. 2021

www.AgriDataInc.com

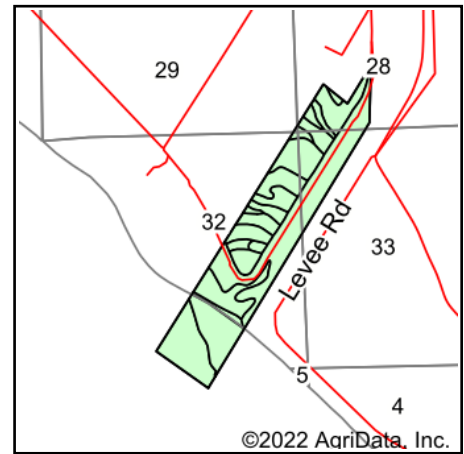


5/28/2022

Soils Map



Soils data provided by USDA and NRCS.



State: **Illinois**
 County: **Randolph**
 Location: **32-5S-9W**
 Township: **Prairie du Rocher**
 Acres: **206.92**
 Date: **5/28/2022**



Maps Provided By:



Area Symbol: IL157, Soil Area Version: 15
 Area Symbol: MO186, Soil Area Version: 2

Code	Soil Description	Acres	Percent of field	Corn Bu/A	Soybeans Bu/A	Wheat Bu/A	Grass-legume e hay, T/A	Crop productivity index for optimum management
3847L	Fluvaquents-Orthents complex, frequently flooded, long duration	63.72	30.8%				.00	
8071L	Darwin silty clay, 0 to 2 percent slopes, occasionally flooded, long duration	31.26	15.1%	149	50	60	4.39	111
8304B	Landes very fine sandy loam, 2 to 5 percent slopes, occasionally flooded	27.06	13.1%	135	45	55	0.00	100
99001	Water	25.30	12.2%					
66020	Haynie silt loam, 0 to 2 percent slopes, frequently flooded	20.05	9.7%					
3391A	Blake silty clay loam, 0 to 2 percent slopes, frequently flooded	14.84	7.2%	162	49	60	4.77	116
8591A	Fults silty clay, 0 to 2 percent slopes, occasionally flooded	11.00	5.3%	155	50	59	4.64	115
8674A	Dozaville silt loam, 0 to 2 percent slopes, occasionally flooded	9.05	4.4%	185	58	71	0.00	137
3394B	Haynie silt loam, 2 to 5 percent slopes, frequently flooded	2.47	1.2%	163	52	60	0.00	118
8284A	Tice silty clay loam, 0 to 2 percent slopes, occasionally flooded	2.17	1.0%	184	57	70	5.64	134
Weighted Average				71.7	23.1	27.9	1.00	52.8

Table: Optimum Crop Productivity Ratings for Illinois Soil by K.R. Olson and J.M. Lang, Office of Research, ACES, University of Illinois at Champaign-Urbana. Version: 1/2/2012 Amended Table S2 B811

Crop yields and productivity indices for optimum management (B811) are maintained at the following NRES web site: <http://soilproductivity.nres.illinois.edu/>

** Indexes adjusted for slope and erosion according to Bulletin 811 Table S3

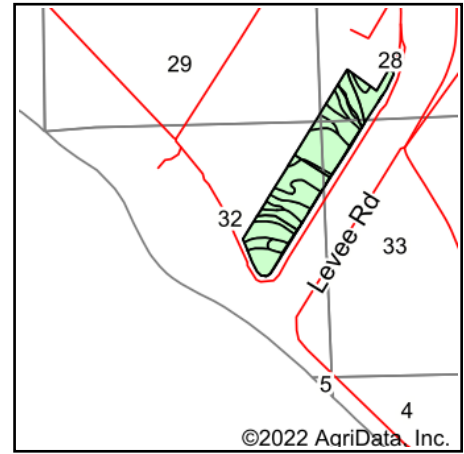
e Soils in the well drained group were not rated for grass-legume and are shown with a zero "0".

Soils data provided by USDA and NRCS. Soils data provided by University of Illinois at Champaign-Urbana.

Soils Map



Soils data provided by USDA and NRCS.



State: **Illinois**
 County: **Randolph**
 Location: **32-5S-9W**
 Township: **Prairie du Rocher**
 Acres: **81.27**
 Date: **5/28/2022**



Maps Provided By:



Area Symbol: IL157, Soil Area Version: 15

Code	Soil Description	Acres	Percent of field	Corn Bu/A	Soybeans Bu/A	Wheat Bu/A	Grass-legume e hay, T/A	Crop productivity index for optimum management
8071L	Darwin silty clay, 0 to 2 percent slopes, occasionally flooded, long duration	30.51	37.5%	149	50	60	4.39	111
8304B	Landes very fine sandy loam, 2 to 5 percent slopes, occasionally flooded	27.40	33.7%	135	45	55	0.00	100
8591A	Fults silty clay, 0 to 2 percent slopes, occasionally flooded	11.26	13.9%	155	50	59	4.64	115
8674A	Dozaville silt loam, 0 to 2 percent slopes, occasionally flooded	9.18	11.3%	185	58	71	0.00	137
8284A	Tice silty clay loam, 0 to 2 percent slopes, occasionally flooded	2.10	2.6%	184	57	70	5.64	134
3847L	Fluvaquents-Orthents complex, frequently flooded, long duration	0.82	1.0%				.00	
Weighted Average				148.6	48.9	59.1	2.43	110.2

Table: Optimum Crop Productivity Ratings for Illinois Soil by K.R. Olson and J.M. Lang, Office of Research, ACES, University of Illinois at Champaign-Urbana. Version: 1/2/2012 Amended Table S2 B811

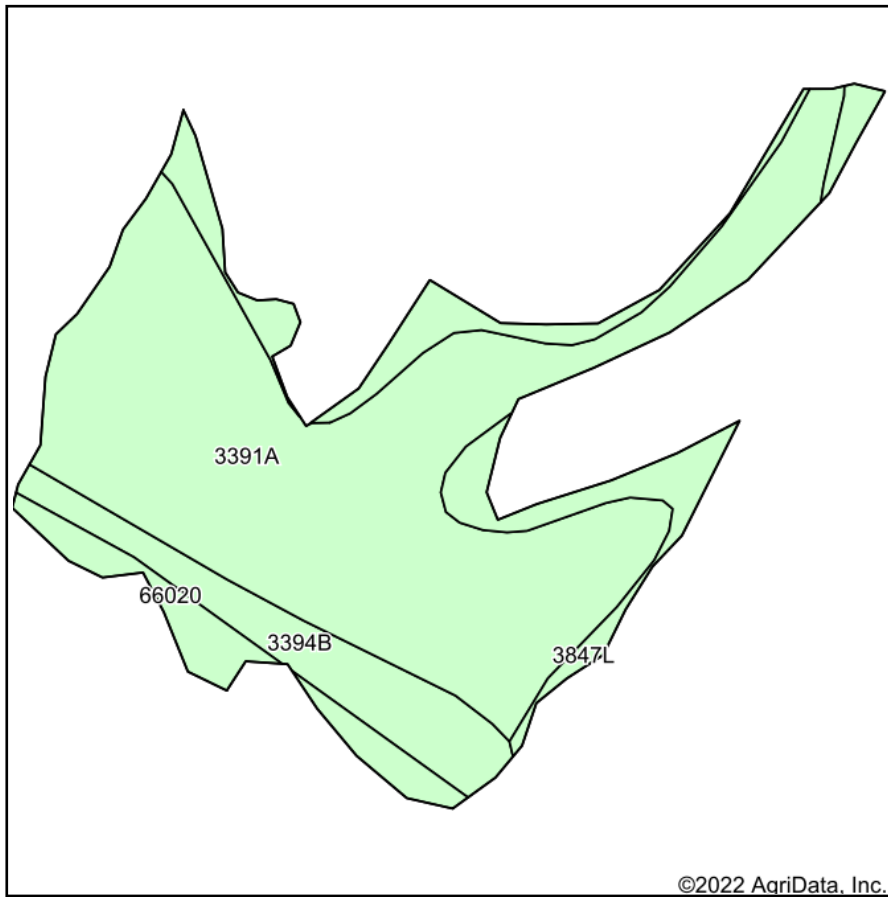
Crop yields and productivity indices for optimum management (B811) are maintained at the following NRES web site: <http://soilproductivity.nres.illinois.edu/>

** Indexes adjusted for slope and erosion according to Bulletin 811 Table S3

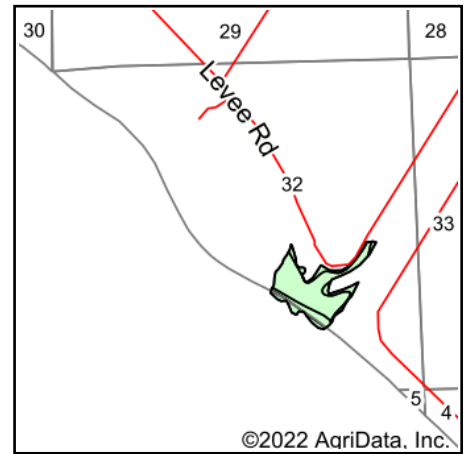
e Soils in the well drained group were not rated for grass-legume and are shown with a zero "0".

Soils data provided by USDA and NRCS. Soils data provided by University of Illinois at Champaign-Urbana.

Soils Map



Soils data provided by USDA and NRCS.



State: **Illinois**
 County: **Randolph**
 Location: **32-5S-9W**
 Township: **Prairie du Rocher**
 Acres: **18.76**
 Date: **7/14/2022**



Maps Provided By:



Area Symbol: IL157, Soil Area Version: 15
 Area Symbol: MO186, Soil Area Version: 2

Code	Soil Description	Acres	Percent of field	Corn Bu/A	Soybeans Bu/A	Wheat Bu/A	Grass-legume e hay, T/A	Crop productivity index for optimum management
3391A	Blake silty clay loam, 0 to 2 percent slopes, frequently flooded	12.95	69.0%	162	49	60	4.77	116
3847L	Fluvaquents-Orthents complex, frequently flooded, long duration	2.59	13.8%				.00	
3394B	Haynie silt loam, 2 to 5 percent slopes, frequently flooded	2.06	11.0%	163	52	60	0.00	118
66020	Haynie silt loam, 0 to 2 percent slopes, frequently flooded	1.16	6.2%					
Weighted Average				129.6	39.4	47.9	3.15	92.9

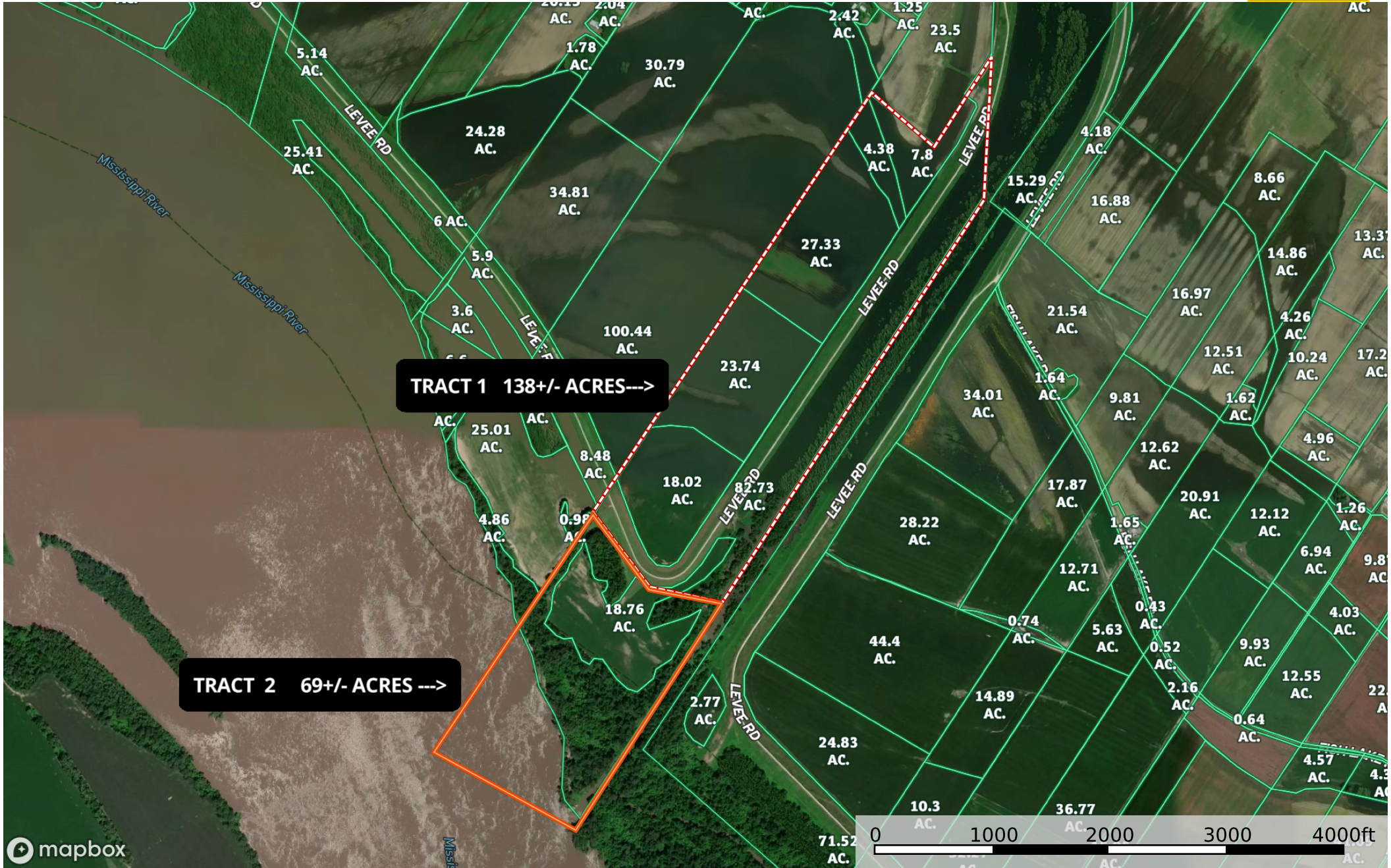
Table: Optimum Crop Productivity Ratings for Illinois Soil by K.R. Olson and J.M. Lang, Office of Research, ACES, University of Illinois at Champaign-Urbana. Version: 1/2/2012 Amended Table S2 B811

Crop yields and productivity indices for optimum management (B811) are maintained at the following NRES web site: <http://soilproductivity.nres.illinois.edu/>

** Indexes adjusted for slope and erosion according to Bulletin 811 Table S3

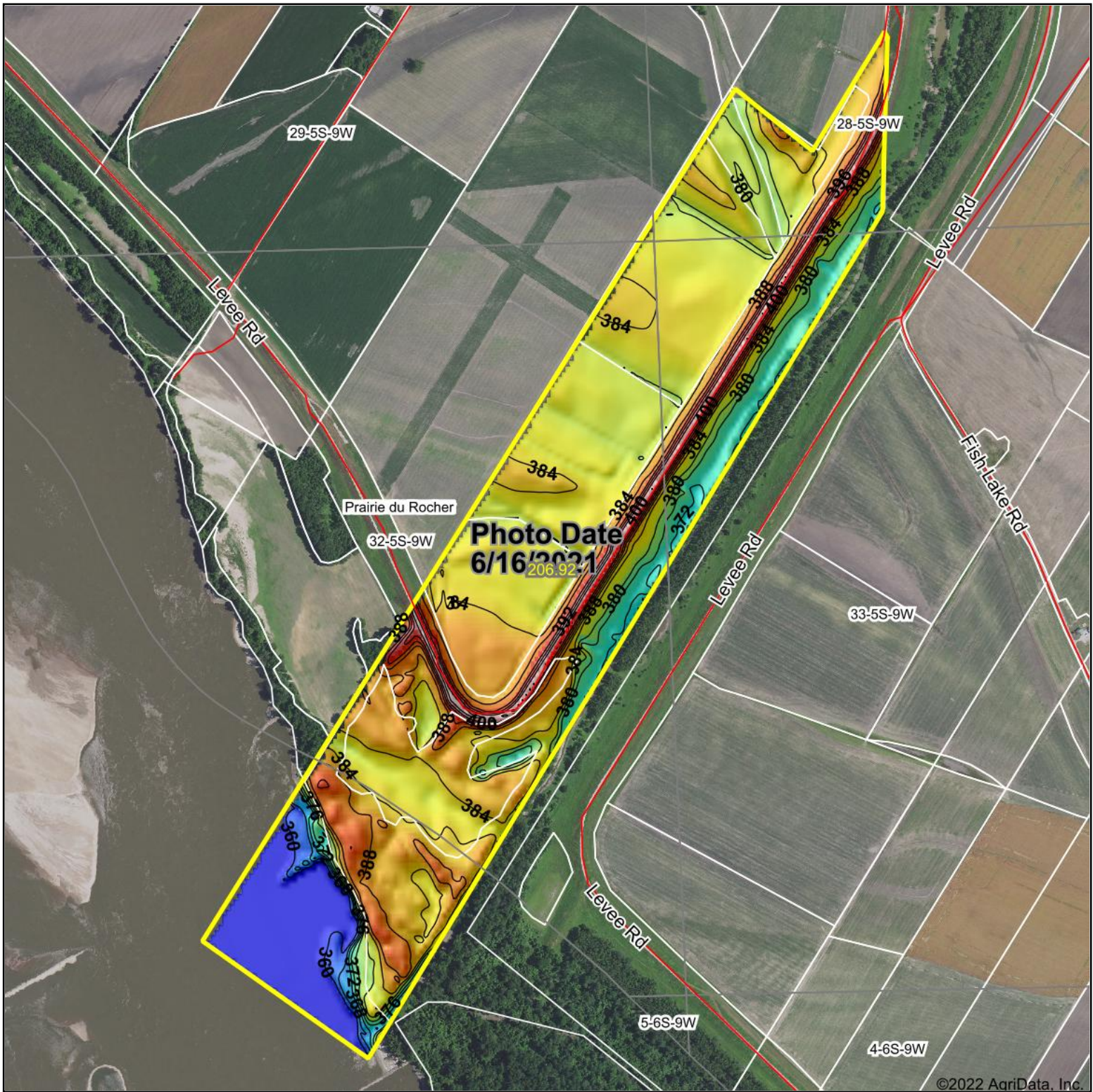
e Soils in the well drained group were not rated for grass-legume and are shown with a zero "0".

Soils data provided by USDA and NRCS. Soils data provided by University of Illinois at Champaign-Urbana.



Boundary Boundary

Topography Hillshade



Low Elevation High

Source: USGS 10 meter dem

0ft 1036ft 2071ft

Interval(ft): 4

Min: 358.7

Max: 406.4

Range: 47.7

Average: 381.5

Standard Deviation: 9.38 ft



5/28/2022

32-5S-9W
Randolph County
Illinois

map center: 38° 3' 12.63, -90° 6' 38.36



Maps Provided By:

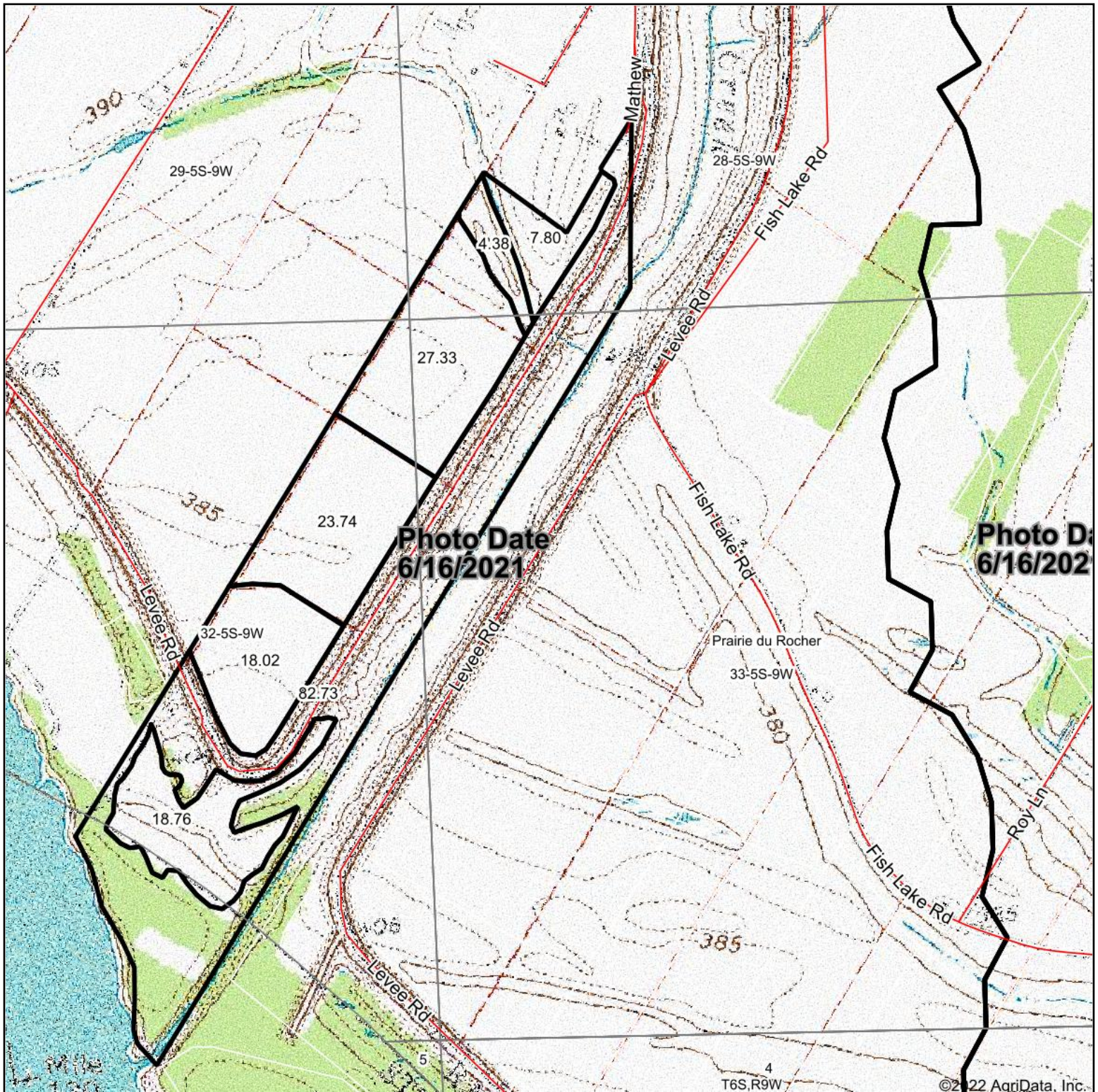


© AgriData, Inc. 2021

www.AgriDataInc.com

Field borders provided by Farm Service Agency as of 5/21/2008.

Topography Map



map center: 38° 3' 25.72, -90° 6' 23.19

0ft 1085ft 2170ft

33-5S-9W
Randolph County
Illinois



Maps Provided By:



© AgriData, Inc. 2021

www.AgriDataInc.com

Field borders provided by Farm Service Agency as of 5/21/2008.