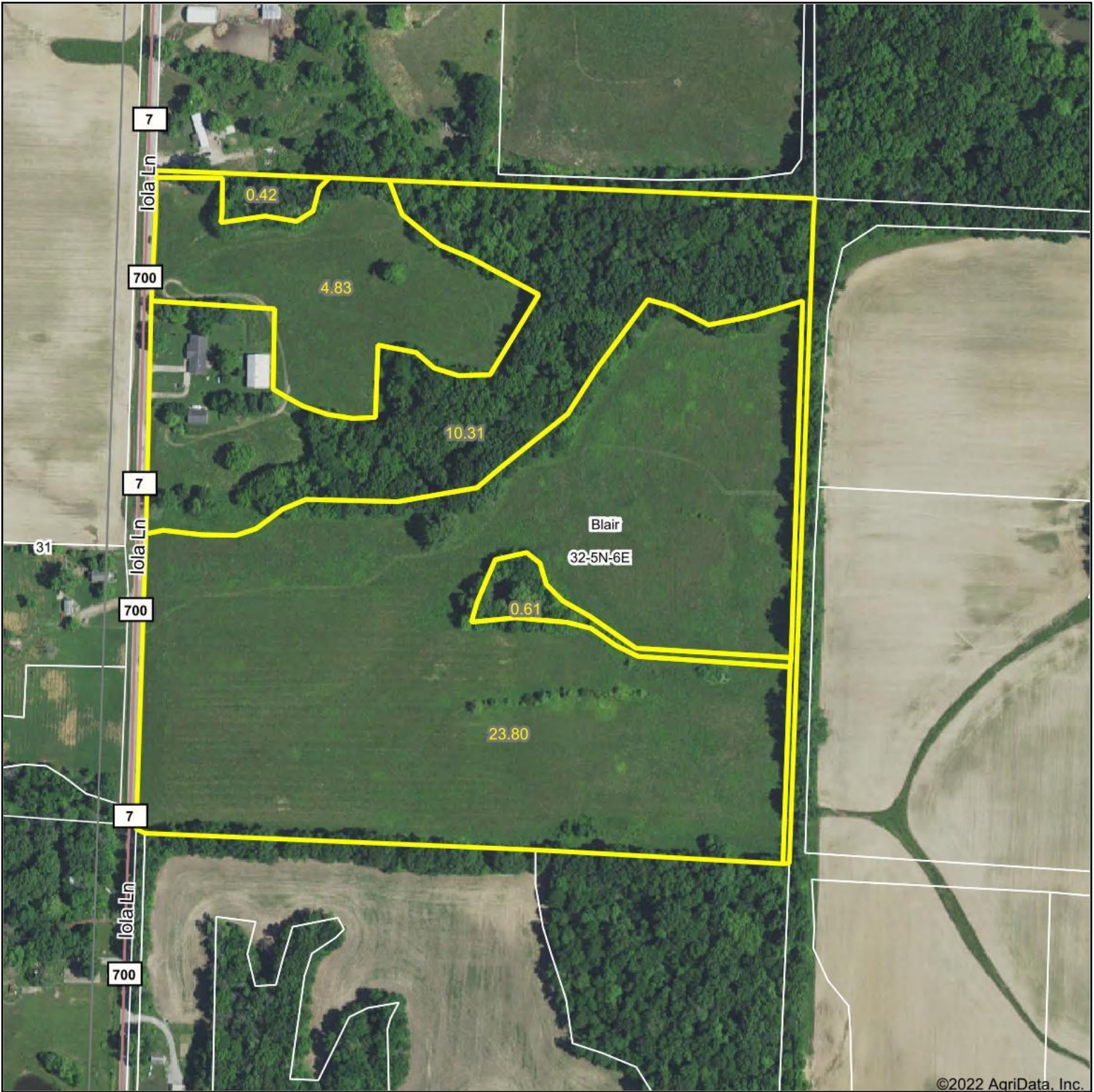
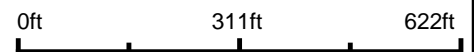


# Aerial Map



Map Center: 38° 50' 9.27, -88° 33' 40.66



**32-5N-6E**  
**Clay County**  
**Illinois**

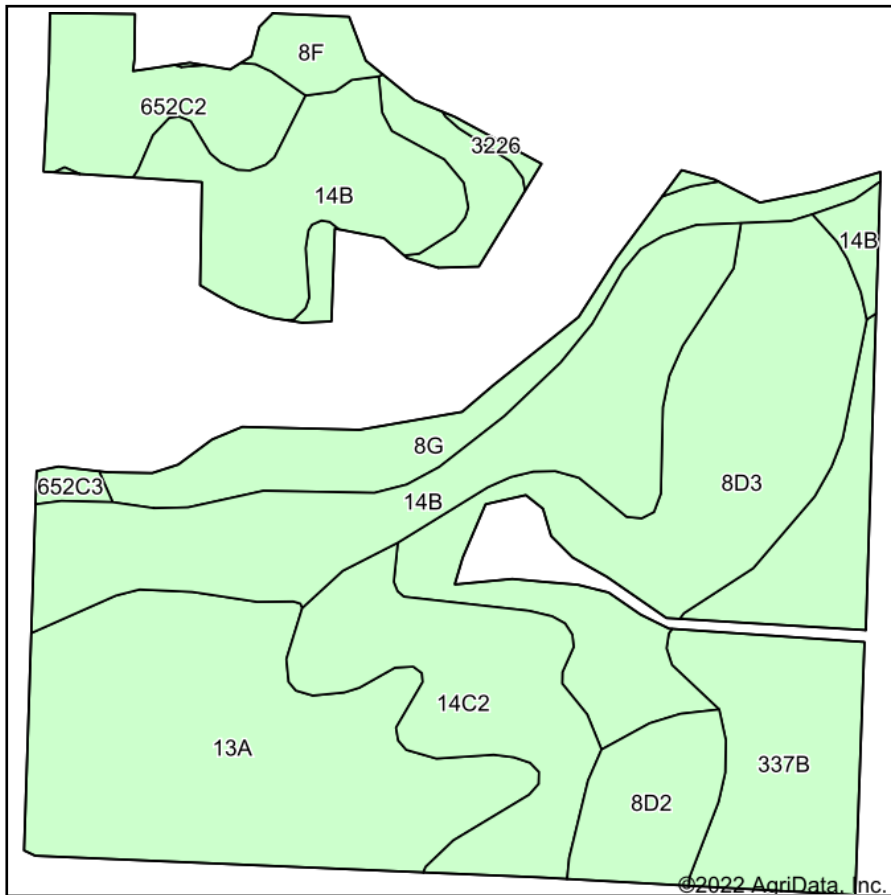


1/12/2022

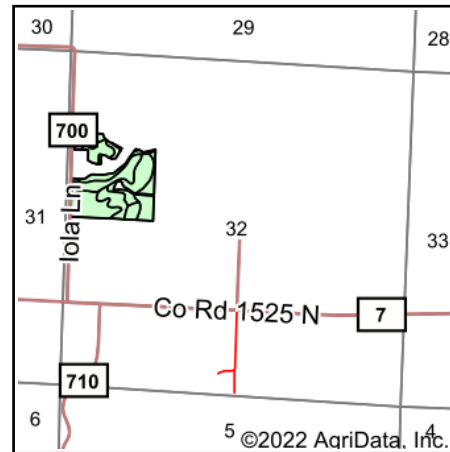
Maps Provided By:  
 **surety**  
CUSTOMIZED ONLINE MAPPING  
© AgriData, Inc. 2021      www.AgriDataInc.com

Field borders provided by Farm Service Agency as of 5/21/2008.

# Soils Map



Soils data provided by USDA and NRCS.



State: **Illinois**  
 County: **Clay**  
 Location: **32-5N-6E**  
 Township: **Blair**  
 Acres: **28.63**  
 Date: **1/12/2022**



Maps Provided By:



© AgriData, Inc. 2021

www.AgriDataInc.com



Area Symbol: IL025, Soil Area Version: 16

Code	Soil Description	Acres	Percent of field	Corn Bu/A	Soybeans Bu/A	Wheat Bu/A	Grass-legume e hay, T/A	Crop productivity index for optimum management
**14B	Ava silt loam, 2 to 5 percent slopes	6.42	22.4%	**134	**44	**54	0.00	**99
13A	Bluford silt loam, 0 to 2 percent slopes	5.54	19.4%	136	44	55	3.39	101
**8D3	Hickory clay loam, 10 to 18 percent slopes, severely eroded	4.91	17.1%	**98	**33	**40	0.00	**75
**337B	Creal silt loam, 2 to 5 percent slopes	3.29	11.5%	**149	**47	**58	0.00	**109
**14C2	Ava silt loam, 5 to 10 percent slopes, eroded	2.70	9.4%	**122	**40	**50	0.00	**90
**8G	Hickory silt loam, 35 to 60 percent slopes	2.50	8.7%	**58	**20	**24	0.00	**44
**652C2	Passport silt loam, 5 to 10 percent slopes, eroded	1.49	5.2%	**116	**39	**51	**3.85	**88
**8D2	Hickory silt loam, 10 to 18 percent slopes, eroded	1.14	4.0%	**108	**36	**44	0.00	**82
**8F	Hickory silt loam, 18 to 35 percent slopes	0.41	1.4%	**86	**29	**35	0.00	**65
**652C3	Passport silty clay loam, 5 to 10 percent slopes, severely eroded	0.13	0.5%	**108	**36	**47	**3.56	**82
3226	Wirt loam, sandy substratum, frequently flooded	0.10	0.3%	146	47	55	0.00	106
<b>Weighted Average</b>				<b>119.4</b>	<b>39.2</b>	<b>48.4</b>	<b>0.87</b>	<b>89</b>

**Table: Optimum Crop Productivity Ratings for Illinois Soil by K.R. Olson and J.M. Lang, Office of Research, ACES, University of Illinois at Champaign-Urbana.** Version: 1/2/2012 Amended Table S2 B811

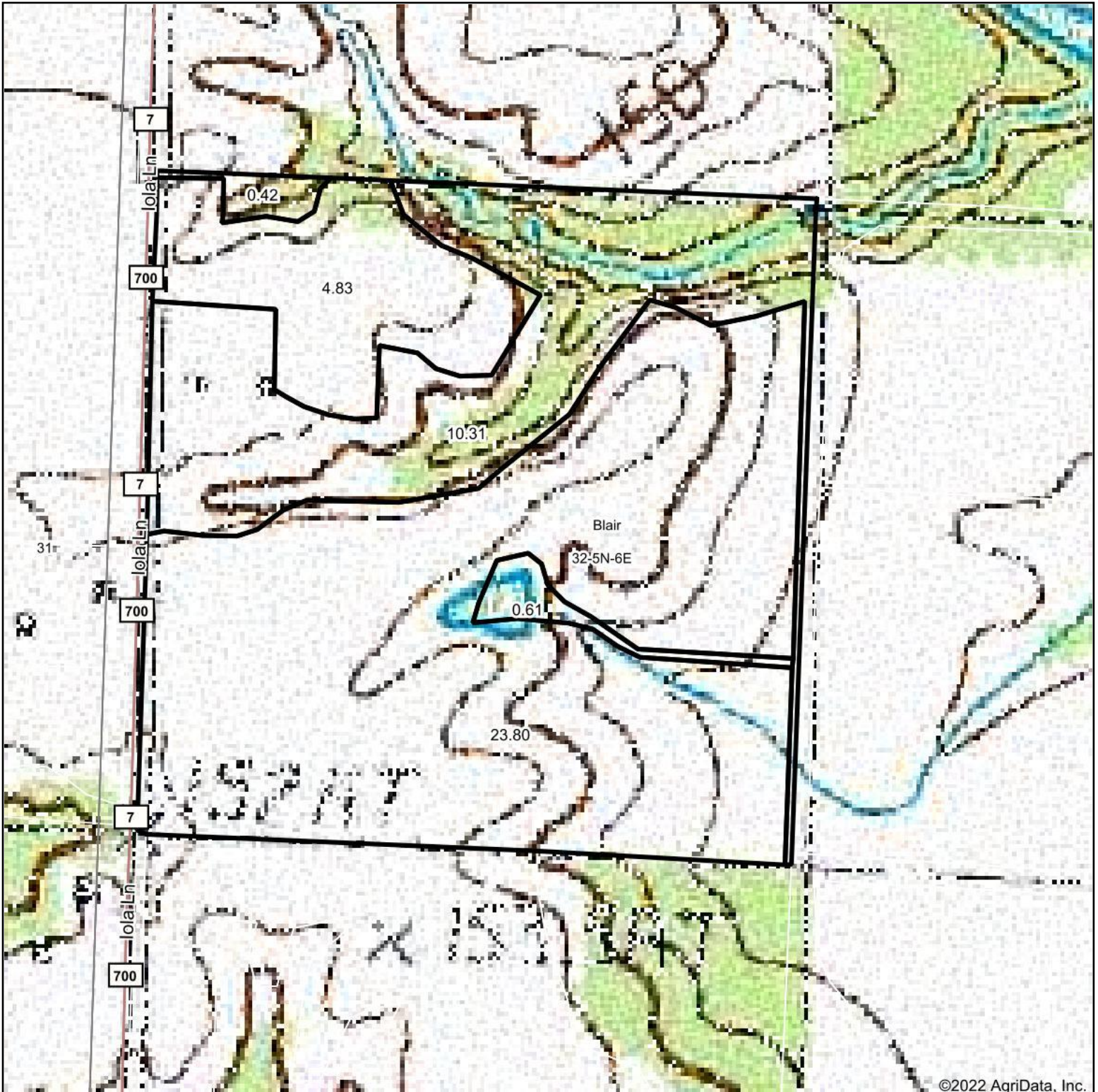
Crop yields and productivity indices for optimum management (B811) are maintained at the following NRES web site: <http://soilproductivity.nres.illinois.edu/>

\*\* Indexes adjusted for slope and erosion according to Bulletin 811 Table S3

e Soils in the well drained group were not rated for grass-legume and are shown with a zero "0".

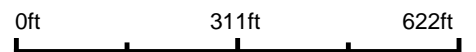
Soils data provided by USDA and NRCS. Soils data provided by University of Illinois at Champaign-Urbana.

# Topography Map



©2022 AgriData, Inc.

map center: 38° 50' 9.27, -88° 33' 40.66



**32-5N-6E**  
**Clay County**  
**Illinois**



1/12/2022



Maps Provided By:



© AgriData, Inc. 2021

www.AgriDataInc.com

Field borders provided by Farm Service Agency as of 5/21/2008.