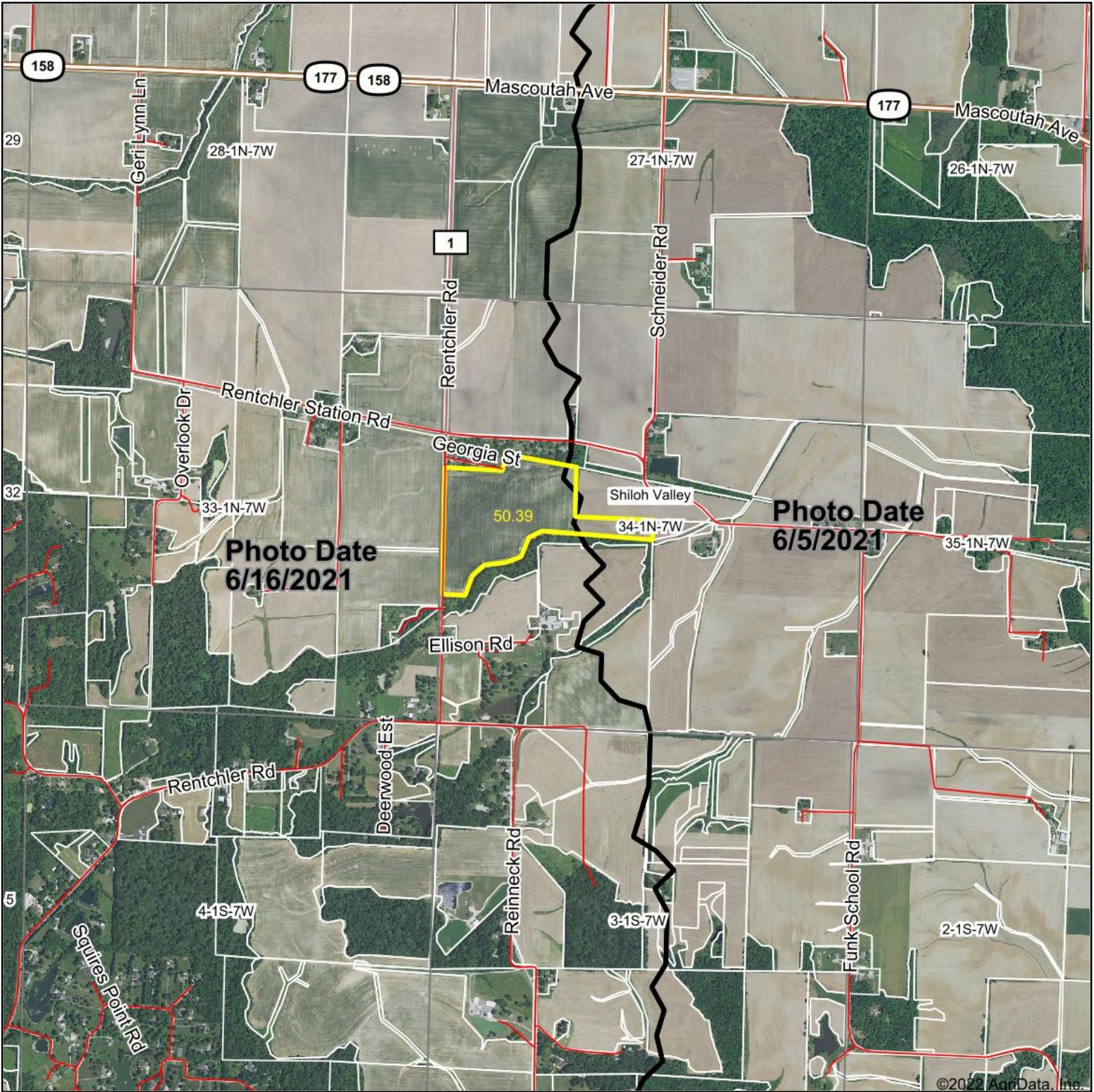


Aerial Map



Map Center: 38° 29' 19.11, -89° 52' 7

0ft 1958ft 3915ft



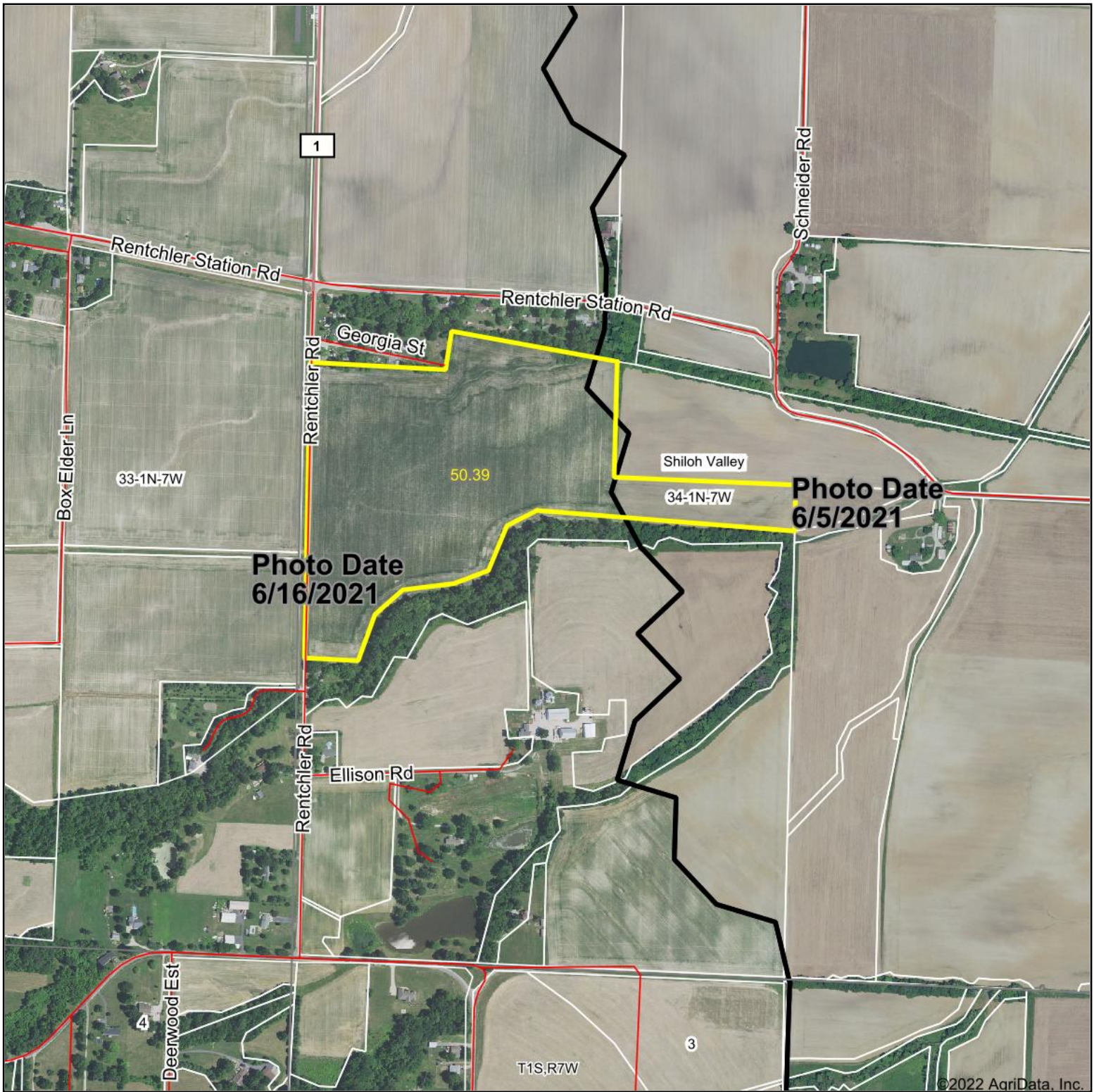
34-1N-7W
St. Clair County
Illinois



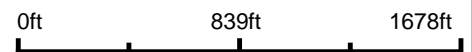
Maps Provided By:
 **surety**[®]
CUSTOMIZED ONLINE MAPPING
© AgriData, Inc. 2021 www.AgriDataInc.com

Field borders provided by Farm Service Agency as of 5/21/2008.

Aerial Map



Map Center: 38° 29' 19.11, -89° 52' 7.02



34-1N-7W
St. Clair County
Illinois

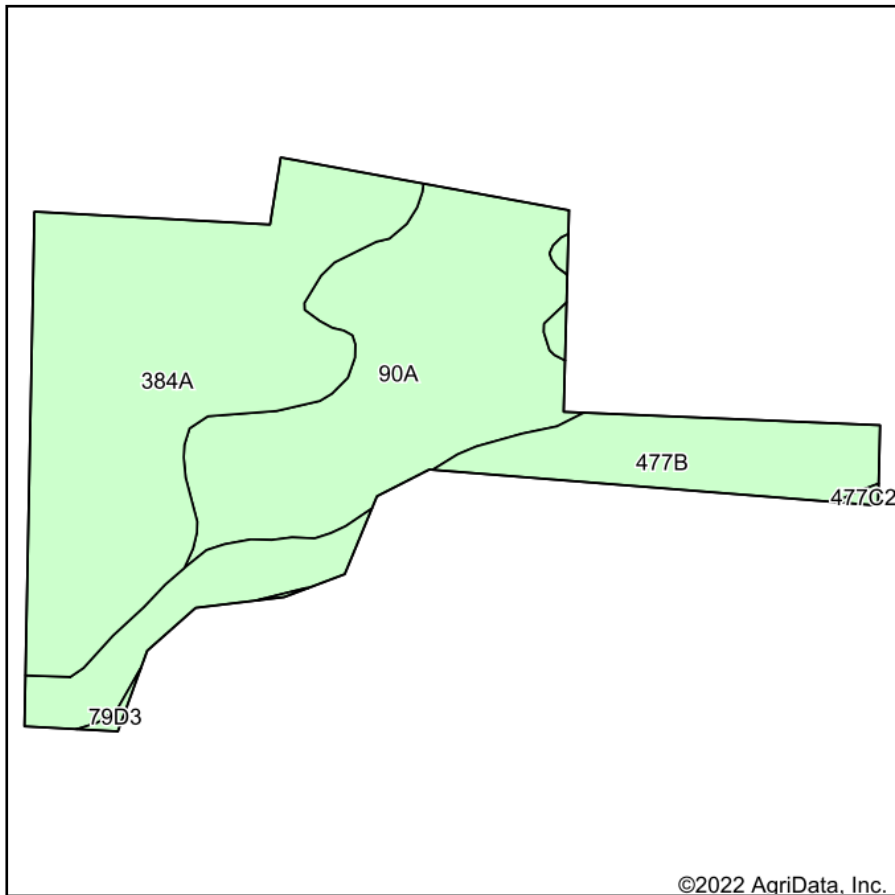


Maps Provided By:
surety
CUSTOMIZED ONLINE MAPPING
© AgriData, Inc. 2021 www.AgriDataInc.com

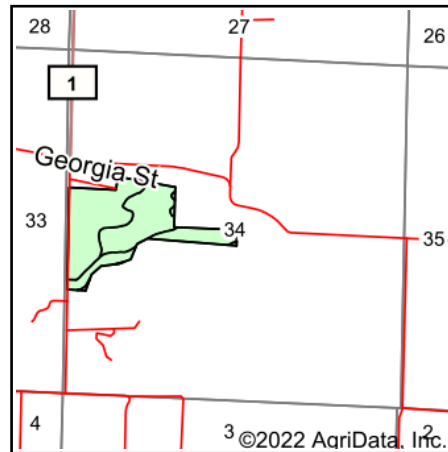
5/19/2022

Field borders provided by Farm Service Agency as of 5/21/2008.

Soils Map



Soils data provided by USDA and NRCS.



State: **Illinois**
 County: **St. Clair**
 Location: **34-1N-7W**
 Township: **Shiloh Valley**
 Acres: **50.39**
 Date: **5/19/2022**



Maps Provided By:



© AgriData, Inc. 2021

www.AgriDataInc.com



Area Symbol: IL163, Soil Area Version: 13

Code	Soil Description	Acres	Percent of field	Corn Bu/A	Soybeans Bu/A	Wheat Bu/A	Grass-legume e hay, T/A	Crop productivity index for optimum management
384A	Edwardsville silt loam, 0 to 2 percent slopes	22.77	45.2%	194	59	75	5.77	141
90A	Bethalto silt loam, 0 to 2 percent slopes	16.94	33.6%	183	57	71	5.52	134
**477B	Winfield silt loam, 2 to 5 percent slopes	10.40	20.6%	**160	**50	**62	0.00	**118
**79D3	Menfro silty clay loam, 10 to 18 percent slopes, severely eroded	0.17	0.3%	**134	**41	**51	0.00	**97
**477C2	Winfield silt loam, 5 to 10 percent slopes, eroded	0.11	0.2%	**151	**47	**59	0.00	**111
Weighted Average				183	56.4	70.9	4.46	133.7

Table: Optimum Crop Productivity Ratings for Illinois Soil by K.R. Olson and J.M. Lang, Office of Research, ACES, University of Illinois at Champaign-Urbana. Version: 1/2/2012 Amended Table S2 B811

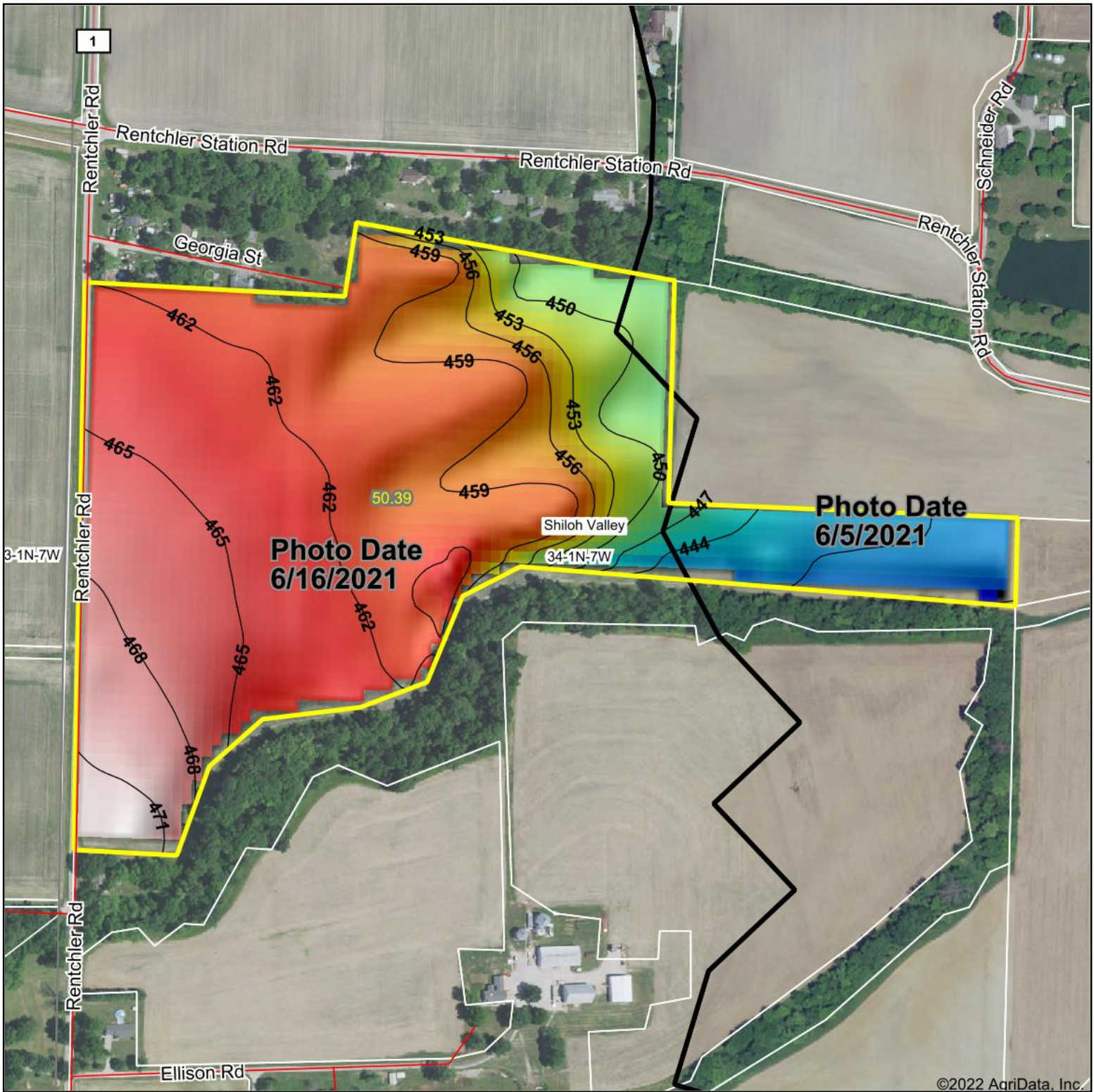
Crop yields and productivity indices for optimum management (B811) are maintained at the following NRES web site: <http://soilproductivity.nres.illinois.edu/>

** Indexes adjusted for slope and erosion according to Bulletin 811 Table S3

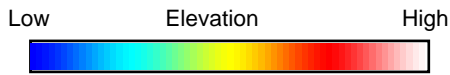
e Soils in the well drained group were not rated for grass-legume and are shown with a zero "0".

Soils data provided by USDA and NRCS. Soils data provided by University of Illinois at Champaign-Urbana.

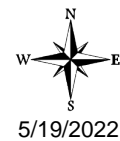
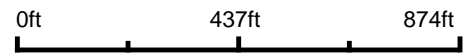
Topography Hillshade



©2022 AgriData, Inc.



Source: USGS 10 meter dem
 Interval(ft): 3
 Min: 434.5
 Max: 472.7
 Range: 38.2
 Average: 459.4
 Standard Deviation: 7.84 ft



34-1N-7W
St. Clair County
Illinois

map center: 38° 29' 19.11, -89° 52' 7.02



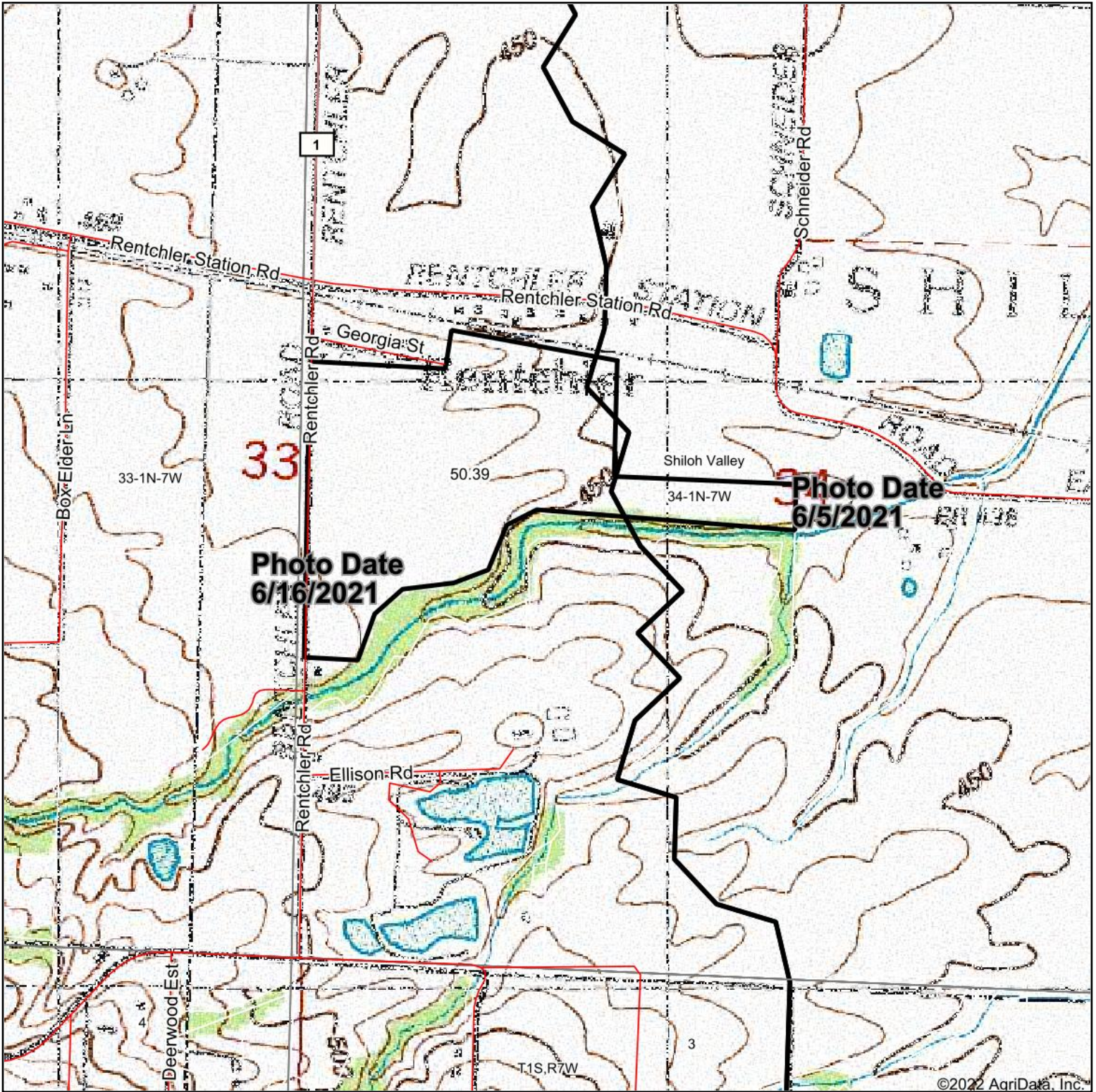
Maps Provided By:



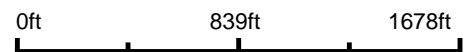
© AgriData, Inc. 2021 www.AgriDataInc.com

Field borders provided by Farm Service Agency as of 5/21/2008.

Topography Map



map center: 38° 29' 19.11, -89° 52' 7.02



34-1N-7W
St. Clair County
Illinois



5/19/2022