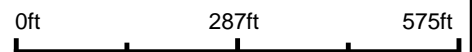


Aerial Map



©2022 AgriData, Inc.

Map Center: 38° 19' 25.93, -89° 34' 37.17



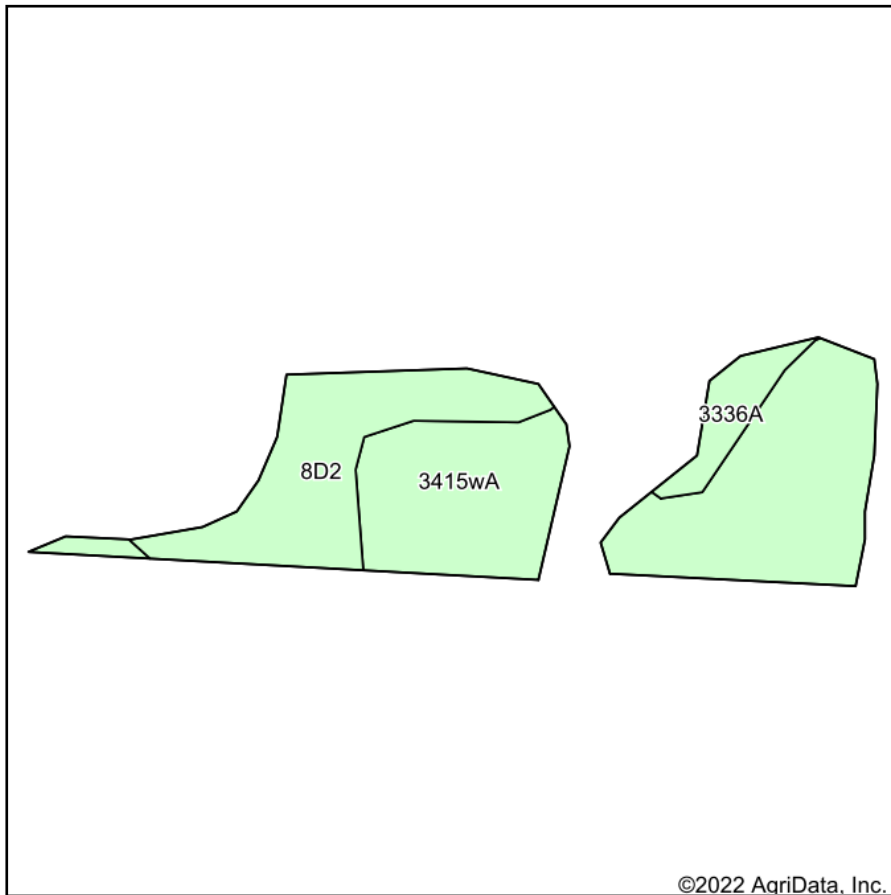
© AgriData, Inc. 2021 www.AgriDataInc.com

30-2S-4W
Washington County
Illinois

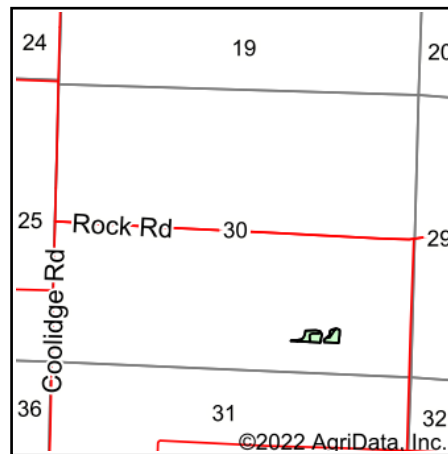


6/11/2022

Soils Map



Soils data provided by USDA and NRCS.



State: **Illinois**
 County: **Washington**
 Location: **30-2S-4W**
 Township: **Plum Hill**
 Acres: **3.02**
 Date: **6/11/2022**



Maps Provided By:



© AgriData, Inc. 2021

www.AgriDataInc.com



Area Symbol: IL189, Soil Area Version: 16

Code	Soil Description	Acres	Percent of field	Corn Bu/A	Soybeans Bu/A	Wheat Bu/A	Crop productivity index for optimum management
3415wA	Orion silt loam, warm mesic, 0 to 2 percent slopes, frequently flooded	1.95	64.6%	180	57	66	131
**8D2	Hickory silt loam, 10 to 18 percent slopes, eroded	0.87	28.8%	**108	**36	**44	**82
3336A	Wilbur silt loam, 0 to 2 percent slopes, frequently flooded	0.20	6.6%	174	56	66	128
Weighted Average				158.9	50.9	59.7	116.7

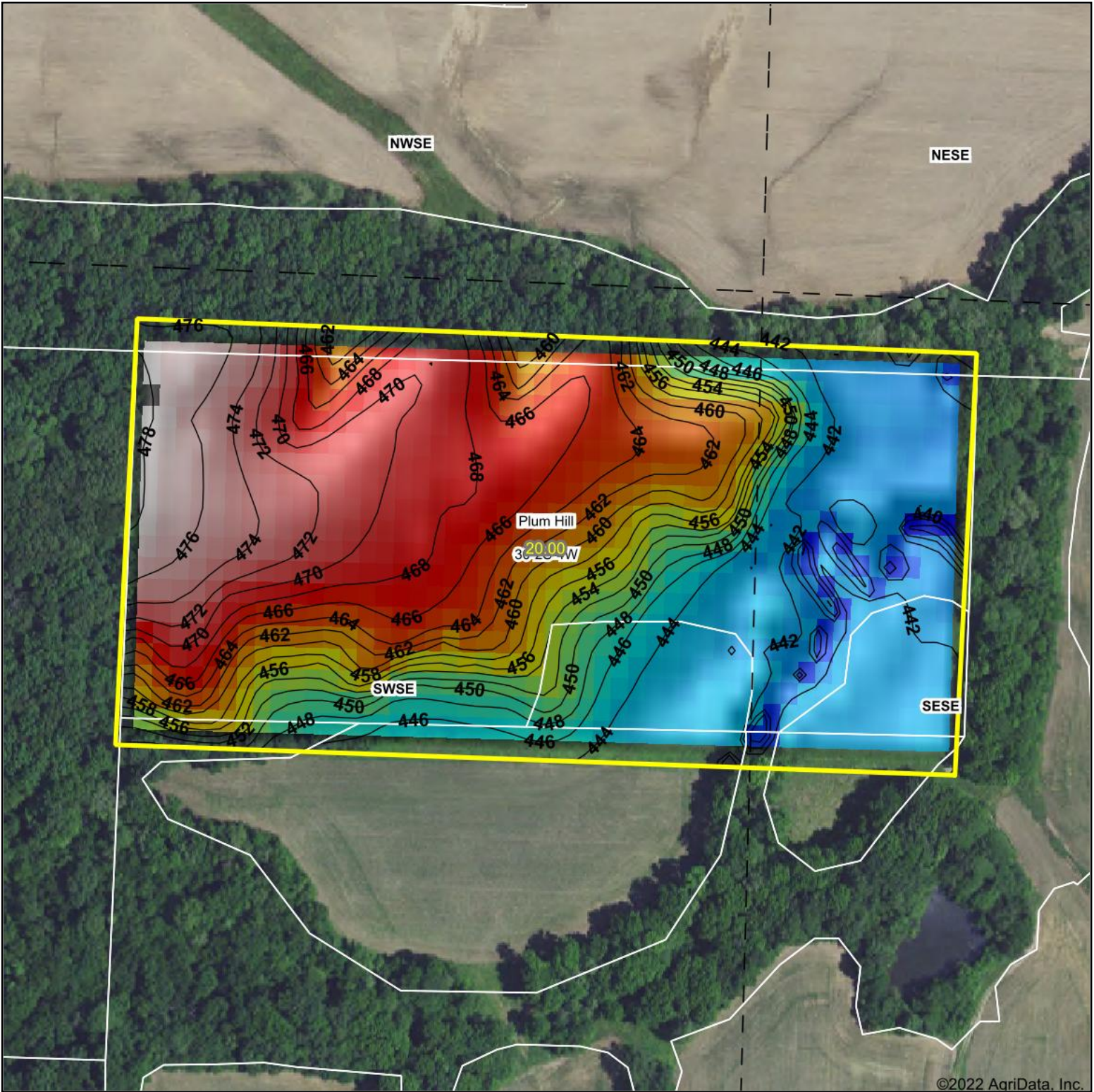
Table: Optimum Crop Productivity Ratings for Illinois Soil by K.R. Olson and J.M. Lang, Office of Research, ACES, University of Illinois at Champaign-Urbana. Version: 1/2/2012 Amended Table S2 B811

Crop yields and productivity indices for optimum management (B811) are maintained at the following NRES web site: <http://soilproductivity.nres.illinois.edu/>

** Indexes adjusted for slope and erosion according to Bulletin 811 Table S3

Soils data provided by USDA and NRCS. Soils data provided by University of Illinois at Champaign-Urbana.

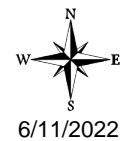
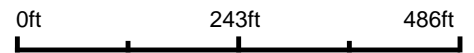
Topography Hillshade



©2022 AgriData, Inc.



Source: USGS 10 meter dem
 Interval(ft): 2
 Min: 434.7
 Max: 478.4
 Range: 43.7
 Average: 457.1
 Standard Deviation: 12.4 ft



30-2S-4W
Washington County
Illinois

map center: 38° 19' 25.93, -89° 34' 37.17



Maps Provided By:



© AgriData, Inc. 2021 www.AgriDataInc.com

Field borders provided by Farm Service Agency as of 5/21/2008.