

Aerial Map



©2022 AgriData, Inc.



Maps Provided By:



© AgriData, Inc. 2021

www.AgriDataInc.com

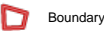
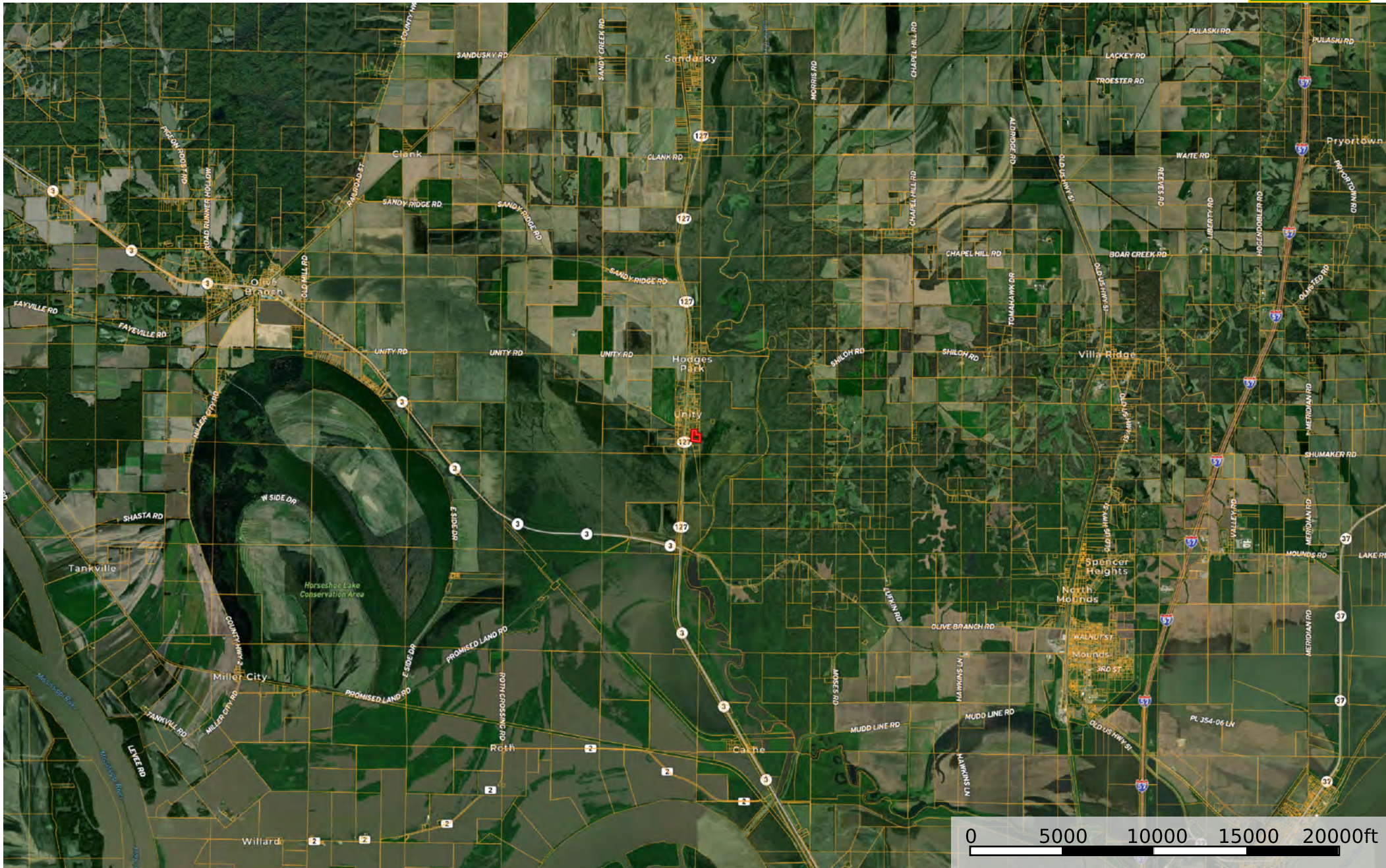
Map Center: 37° 8' 45.12, -89° 16' 16.48

0ft 361ft 723ft

1-16S-2W
Alexander County
Illinois



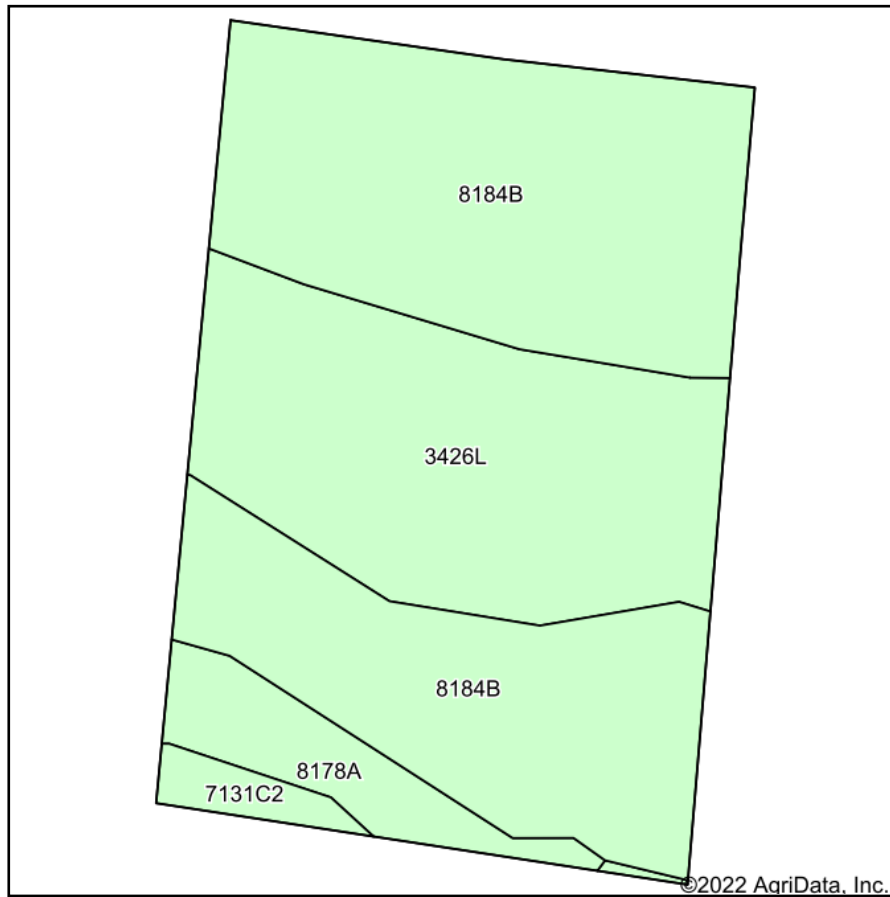
Field borders provided by Farm Service Agency as of 5/21/2008.



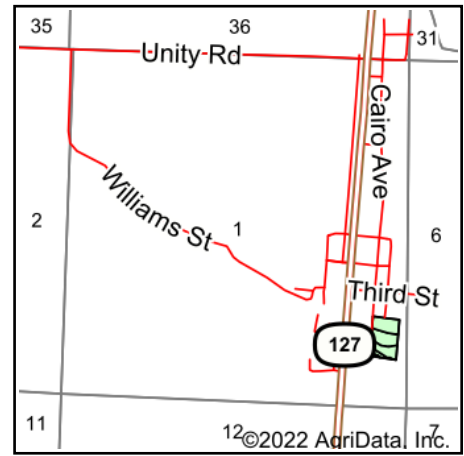
Boundary



Soils Map



Soils data provided by USDA and NRCS.



State: **Illinois**
 County: **Alexander**
 Location: **1-16S-2W**
 Township: **Sandusky**
 Acres: **6.01**
 Date: **3/29/2022**



Maps Provided By:



Area Symbol: IL003, Soil Area Version: 18

Code	Soil Description	Acres	Percent of field	Corn Bu/A	Soybeans Bu/A	Wheat Bu/A	Grass-legume e hay, T/A	Crop productivity index for optimum management
8184B	Roby fine sandy loam, 2 to 5 percent slopes, occasionally flooded	3.51	58.4%	145	50	58	4.64	111
3426L	Karnak silty clay, 0 to 2 percent slopes, frequently flooded, long duration	1.95	32.4%	134	45	53	4.01	101
8178A	Ruark fine sandy loam, 0 to 2 percent slopes, occasionally flooded	0.42	7.0%	130	45	55	4.39	99
7131C2	Alvin fine sandy loam, 5 to 10 percent slopes, eroded, rarely flooded	0.13	2.2%	150	49	59	0.00	111
Weighted Average				140.5	48	56.2	4.32	106.9

Table: Optimum Crop Productivity Ratings for Illinois Soil by K.R. Olson and J.M. Lang, Office of Research, ACES, University of Illinois at Champaign-Urbana. Version: 1/2/2012 Amended Table S2 B811

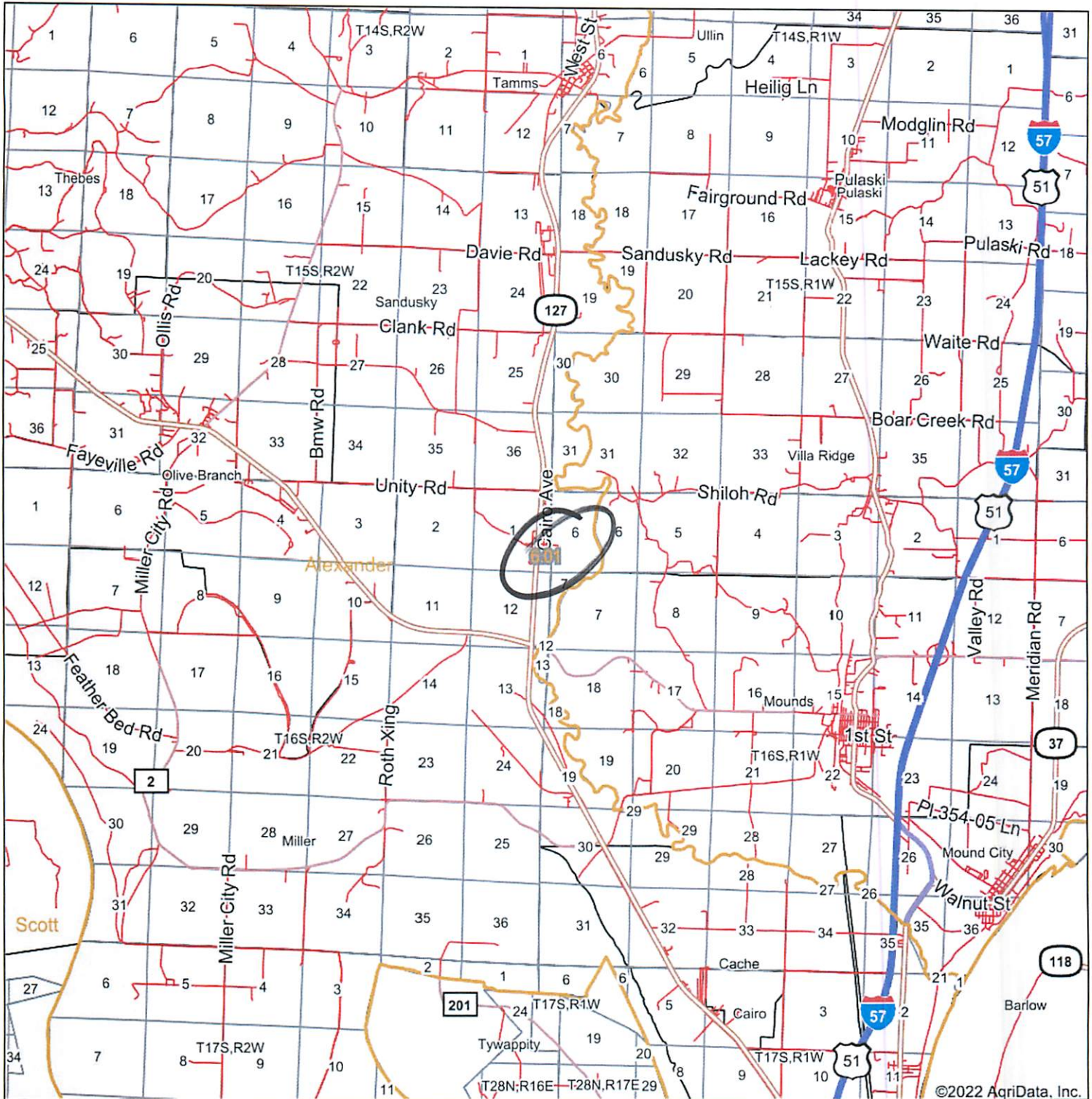
Crop yields and productivity indices for optimum management (B811) are maintained at the following NRES web site: <http://soilproductivity.nres.illinois.edu/>

** Indexes adjusted for slope and erosion according to Bulletin 811 Table S3

e Soils in the well drained group were not rated for grass-legume and are shown with a zero "0".

Soils data provided by USDA and NRCS. Soils data provided by University of Illinois at Champaign-Urbana.

Overview Map



©2022 AgriData, Inc.

map center: 37° 8' 48.28, -89° 16' 17.77

0mi 2mi 4mi



Maps Provided By:



© AgriData, Inc. 2021

www.AgridataInc.com



3/29/2022