

ONLINE LAND AUCTION

Jefferson County IL 220+- Acres - 3 Tracts

Property Location: State Rte 142 & N Gothic Ln, Belle Rive IL

SOLD!

Online Bidding Closed Friday, April 1, 2022 at 8 a.m. CST
Online Bidding Closed Friday, April 15, 2022 at 8 p.m. CST

PROPERTY INSPECTED BY APPROPRIATE COUNTY OFFICIALS — CONTACT AUCTIONEER DON BAILEY AT 618-919-1031

Tracts 2B & 2C

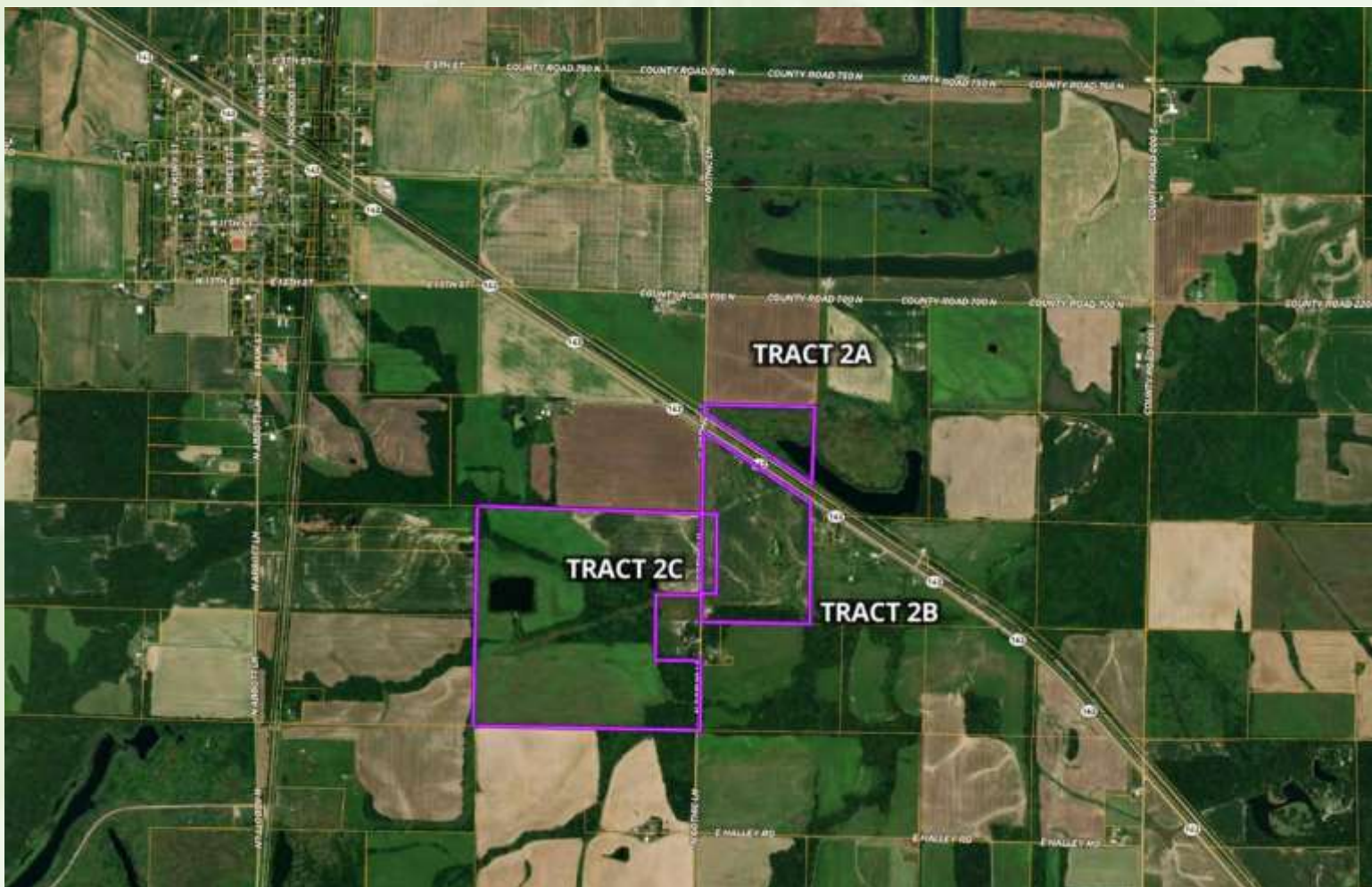
\$892,266.40

Closed 5/9/22

TRACT 2-A: 16.3 ACRES
SHORT LEGAL: Section 36, T3S-R4E
TRACT 2-B: 54.3 ACRES
SHORT LEGAL: Section 36, T3S-R4E
TRACT 2-C: 149.9 ACRES
SHORT LEGAL: Section 35, T3S-R4E

TERMS: 10% DOWN. NO BUYER'S PREMIUM!

Auctioneer Don Bailey, IL Lic #441002325. Complete bidding details, terms, conditions, photos, etc. on buyafarm.com.



buyafarm.com

Specializing in Rural Real Estate Sales and Auctions



MAIN OFFICE: 1403 Hillcrest Dr, Sparta IL 62286 - 800-443-1998

buyafarm.com

MANAGING BROKER / AUCTIONEER

Don Bailey

618-919-1031

[dbailey@buyafarm.com](mailto:d Bailey@buyafarm.com)

