

# Aerial Map

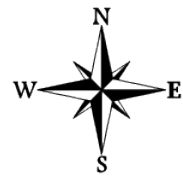


©2022 AgriData, Inc.

Map Center: 38° 13' 18.78, -88° 43' 11.01



**36-3S-4E**  
**Jefferson County**  
**Illinois**



2/23/2022



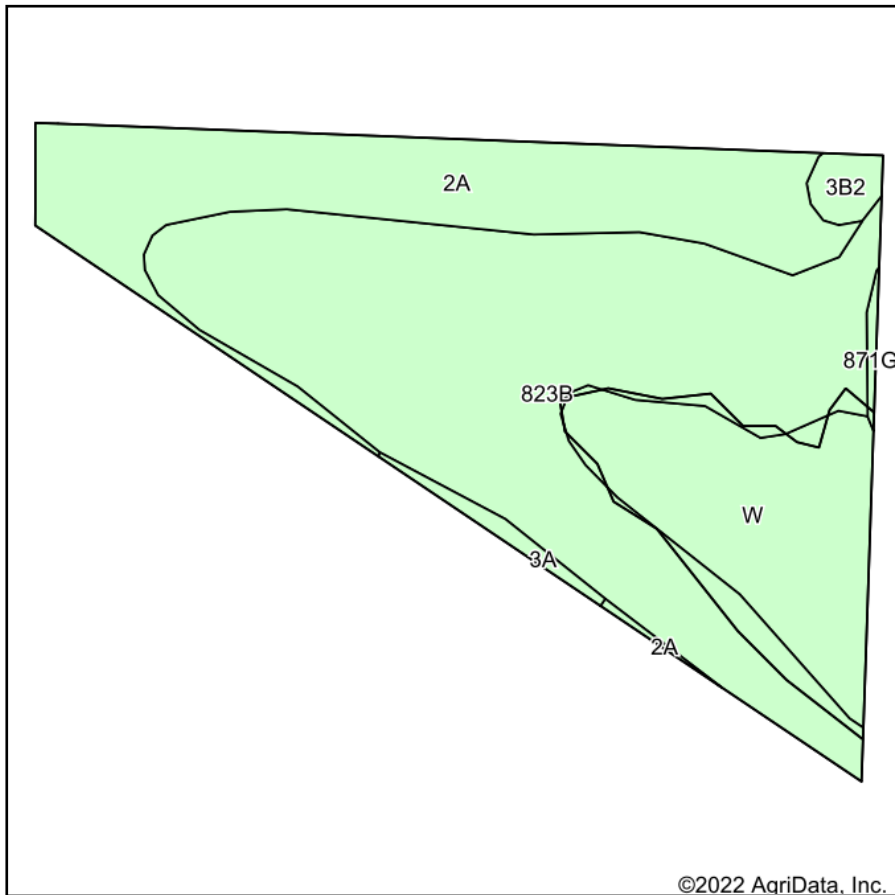
Maps Provided By:



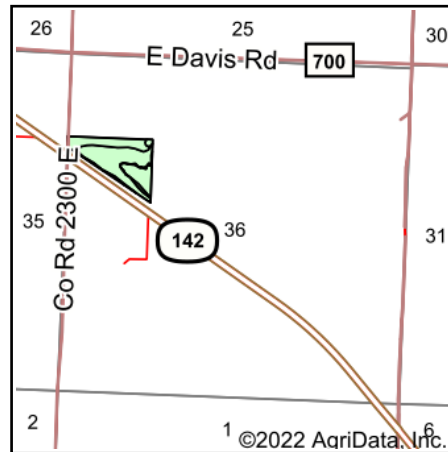
© AgriData, Inc. 2021 www.AgriDataInc.com

Field borders provided by Farm Service Agency as of 5/21/2008.

# Soils Map



Soils data provided by USDA and NRCS.



State: **Illinois**  
 County: **Jefferson**  
 Location: **36-3S-4E**  
 Township: **Pendleton**  
 Acres: **17.93**  
 Date: **2/23/2022**



Maps Provided By:



Area Symbol: IL081, Soil Area Version: 14

Code	Soil Description	Acres	Percent of field	Corn Bu/A	Soybeans Bu/A	Wheat Bu/A	Grass-legume e hay, T/A	Crop productivity index for optimum management
**823B	Schuline silt loam, 1 to 5 percent slopes	9.67	53.9%	**132	**43	**46	0.00	**96
2A	Cisne silt loam, 0 to 2 percent slopes	4.68	26.1%	149	46	59	4.64	109
W	Water	3.05	17.0%					
**3B2	Hoyleton silt loam, 2 to 5 percent slopes, eroded	0.26	1.5%	**139	**44	**55	**4.41	**103
3A	Hoyleton silt loam, 0 to 2 percent slopes	0.20	1.1%	146	46	58	4.64	108
**871G	Lenzburg gravelly silty clay loam, 20 to 60 percent slopes, stony	0.07	0.4%	**62	**21	**23	**2.09	**47
<b>Weighted Average</b>				<b>114</b>	<b>36.4</b>	<b>41.7</b>	<b>1.33</b>	<b>83.1</b>

**Table: Optimum Crop Productivity Ratings for Illinois Soil by K.R. Olson and J.M. Lang, Office of Research, ACES, University of Illinois at Champaign-Urbana.** Version: 1/2/2012 Amended Table S2 B811

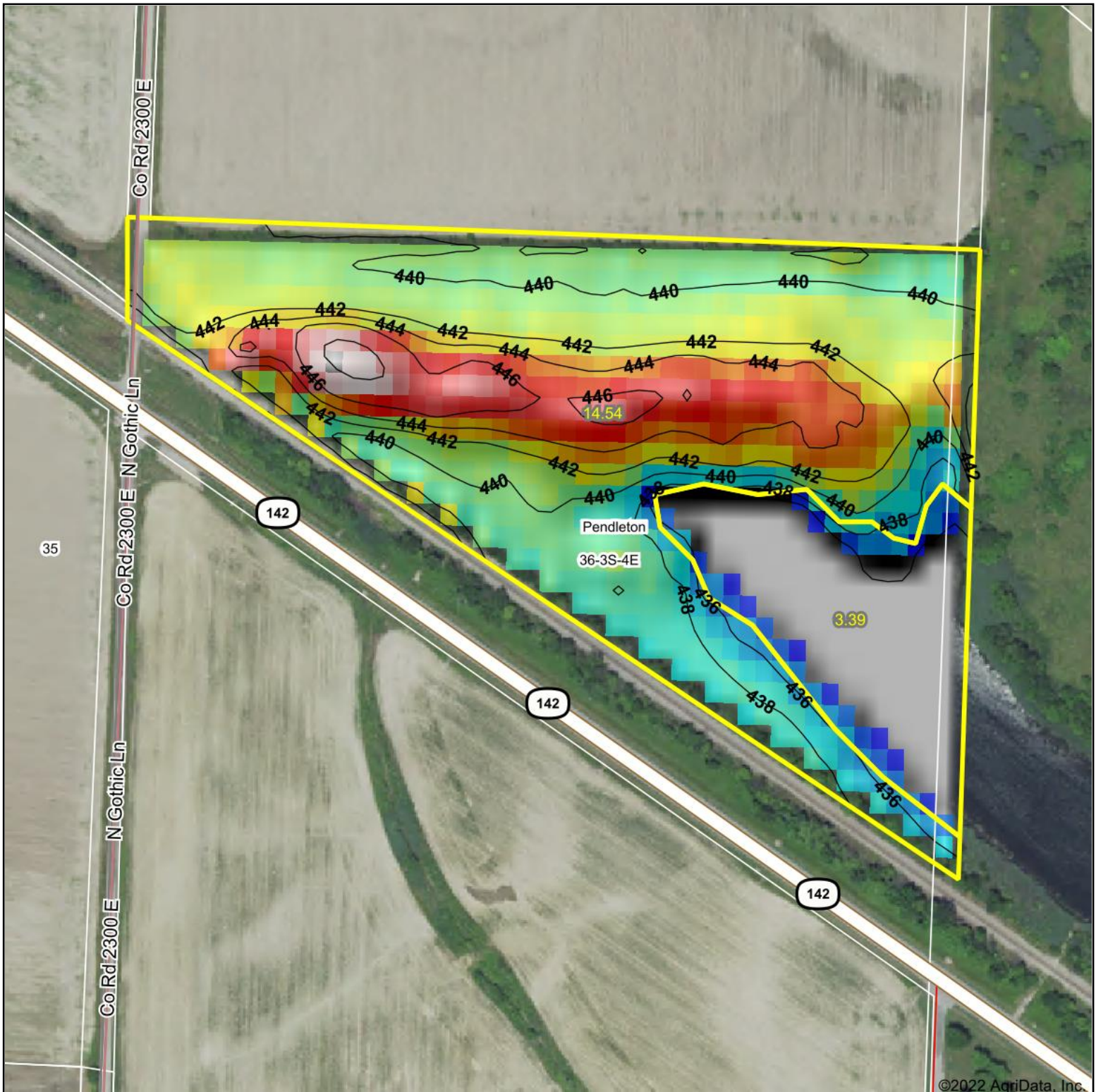
Crop yields and productivity indices for optimum management (B811) are maintained at the following NRES web site: <http://soilproductivity.nres.illinois.edu/>

\*\* Indexes adjusted for slope and erosion according to Bulletin 811 Table S3

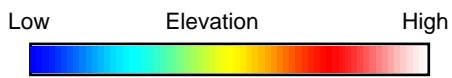
e Soils in the well drained group were not rated for grass-legume and are shown with a zero "0".

Soils data provided by USDA and NRCS. Soils data provided by University of Illinois at Champaign-Urbana.

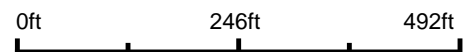
# Topography Hillshade



©2022 AgriData, Inc.



Source: USGS 10 meter dem  
 Interval(ft): 2  
 Min: 434.6  
 Max: 448.5  
 Range: 13.9  
 Average: 439.9  
 Standard Deviation: 3.38 ft



2/23/2022

**36-3S-4E**  
**Jefferson County**  
**Illinois**

map center: 38° 13' 18.78, -88° 43' 11.01



Maps Provided By:



© AgriData, Inc. 2021 www.AgriDataInc.com

Field borders provided by Farm Service Agency as of 5/21/2008.