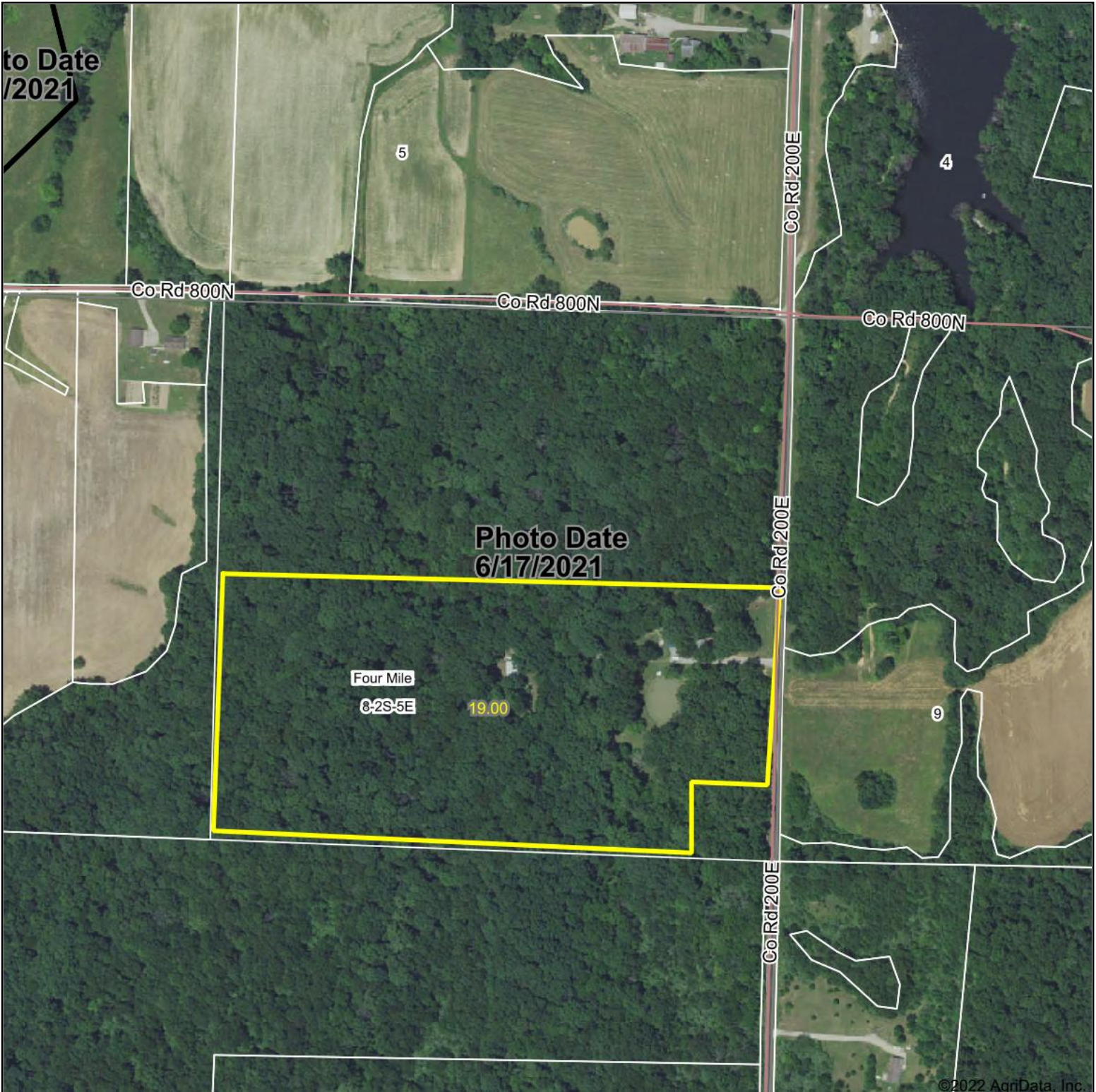
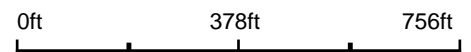


# Aerial Map



Map Center: 38° 22' 12.77, -88° 39' 52.42



8-2S-5E  
Wayne County  
Illinois

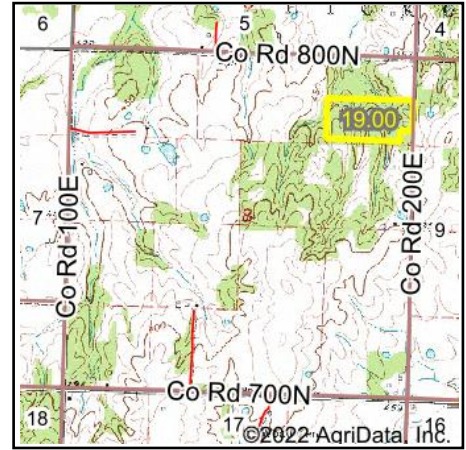
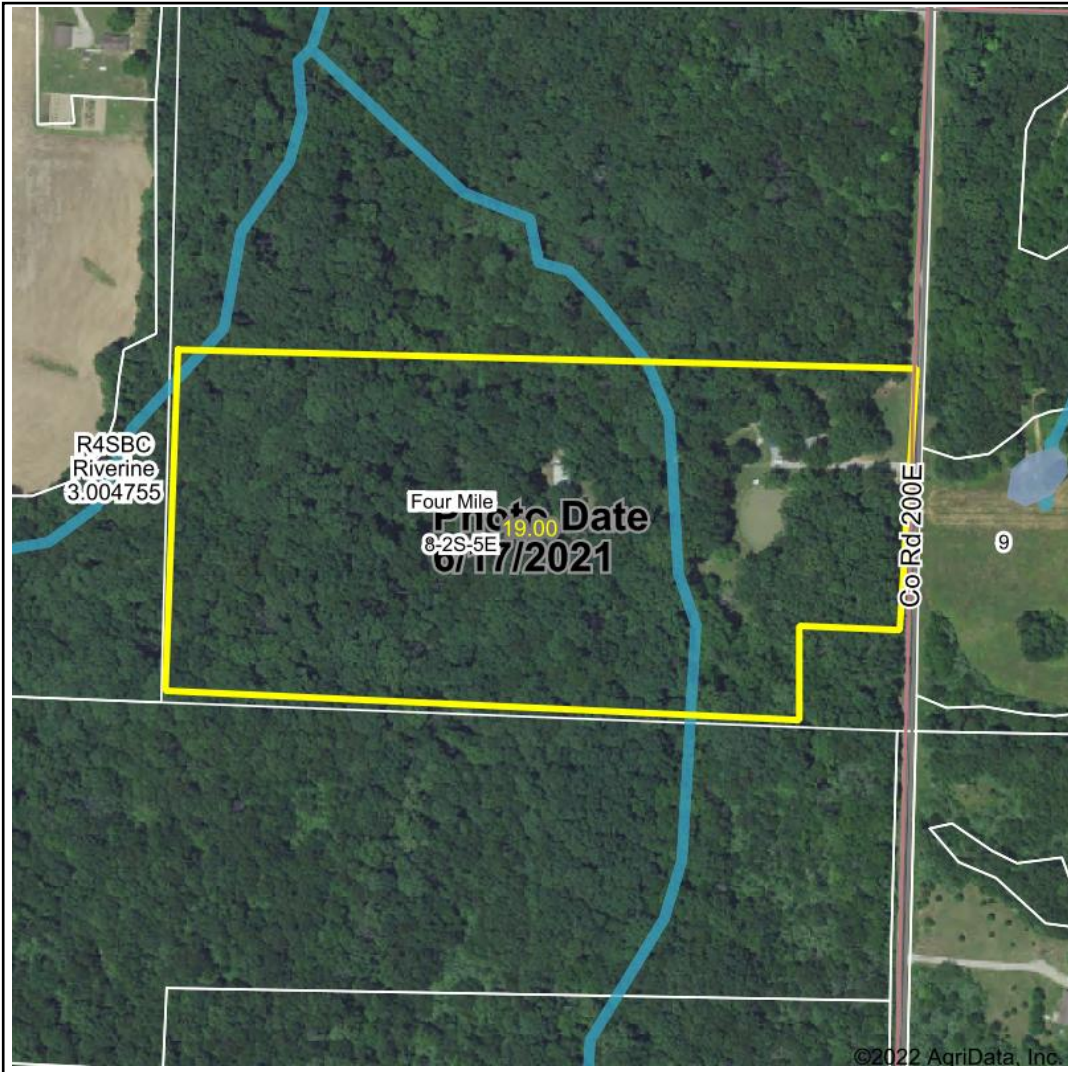


Maps Provided By:  
 surety®  
CUSTOMIZED ONLINE MAPPING  
© AgriData, Inc. 2021 www.AgriDataInc.com

Field borders provided by Farm Service Agency as of 5/21/2008.

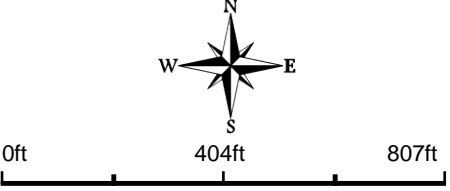


# Wetlands Map



**State:** Illinois  
**Location:** 8-2S-5E  
**County:** Wayne  
**Township:** Four Mile  
**Date:** 3/19/2022

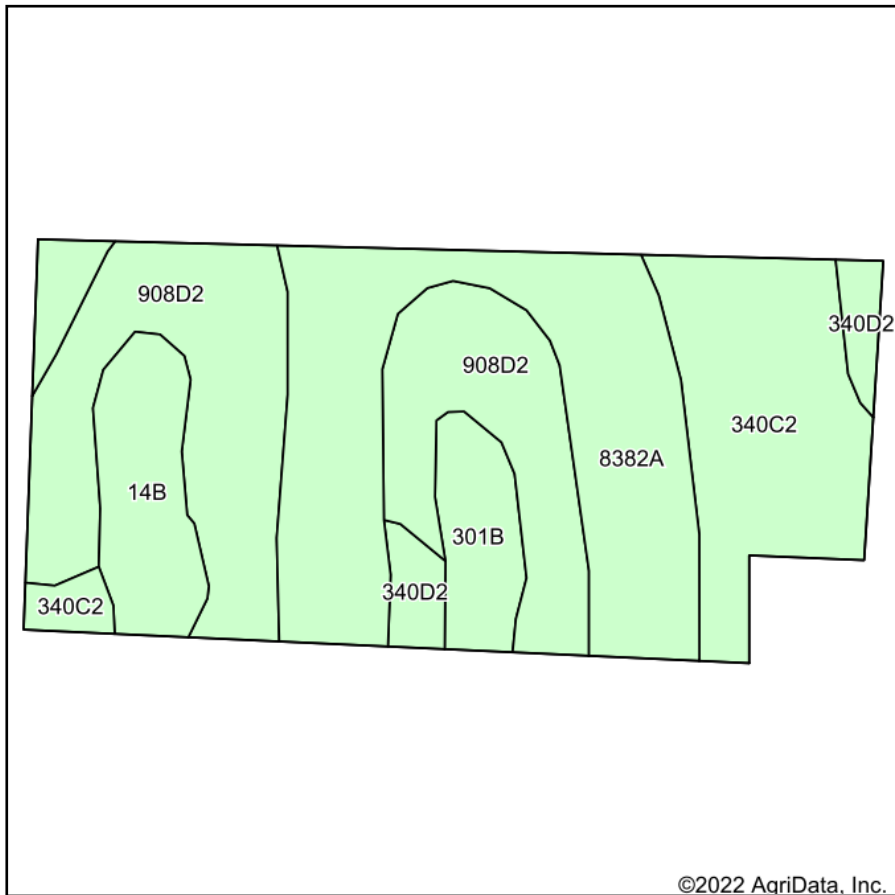
  
 Maps Provided By:  
  
 © AgriData, Inc. 2021 www.AgriDataInc.com



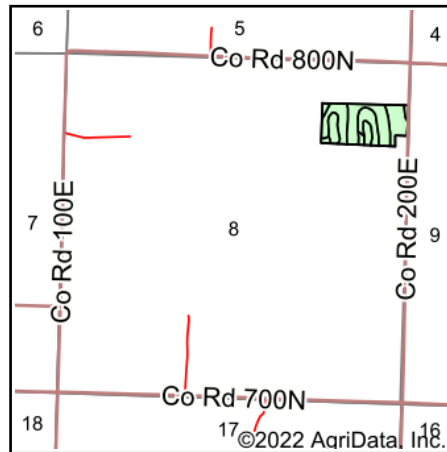
Classification Code	Type	Acres
R4SBC	Riverine	0.33
Total Acres		0.33

Data Source: National Wetlands Inventory website. U.S. DoI, Fish and Wildlife Service, Washington, D.C. <http://www.fws.gov/wetlands/>

# Soils Map



Soils data provided by USDA and NRCS.



State: **Illinois**  
 County: **Wayne**  
 Location: **8-2S-5E**  
 Township: **Four Mile**  
 Acres: **19**  
 Date: **3/19/2022**



Maps Provided By:



© AgriData, Inc. 2021

www.AgriDataInc.com



Area Symbol: IL191, Soil Area Version: 19

Code	Soil Description	Acres	Percent of field	Corn Bu/A	Soybeans Bu/A	Wheat Bu/A	Grass-legume e hay, T/A	Crop productivity index for optimum management
**908D2	Hickory-Kell silt loams, 10 to 18 percent slopes, eroded	6.12	32.2%	**109	**36	**43	**3.52	**84
8382A	Belknap silt loam, 0 to 2 percent slopes, occasionally flooded	5.94	31.3%	156	52	63	4.89	117
**340C2	Zanesville silt loam, till plain, 5 to 10 percent slopes, eroded	3.70	19.5%	**112	**39	**48	**3.50	**85
**14B	Ava silt loam, 2 to 5 percent slopes	1.56	8.2%	**134	**44	**54	0.00	**99
**301B	Grantsburg silt loam, 2 to 5 percent slopes	1.02	5.4%	**133	**46	**54	0.00	**101
**340D2	Zanesville silt loam, till plain, 10 to 18 percent slopes, eroded	0.66	3.5%	**104	**36	**45	**3.27	**79
<b>Weighted Average</b>				<b>127.4</b>	<b>42.8</b>	<b>51.8</b>	<b>3.46</b>	<b>96.5</b>

**Table: Optimum Crop Productivity Ratings for Illinois Soil by K.R. Olson and J.M. Lang, Office of Research, ACES, University of Illinois at Champaign-Urbana.** Version: 1/2/2012 Amended Table S2 B811

Crop yields and productivity indices for optimum management (B811) are maintained at the following NRES web site: <http://soilproductivity.nres.illinois.edu/>

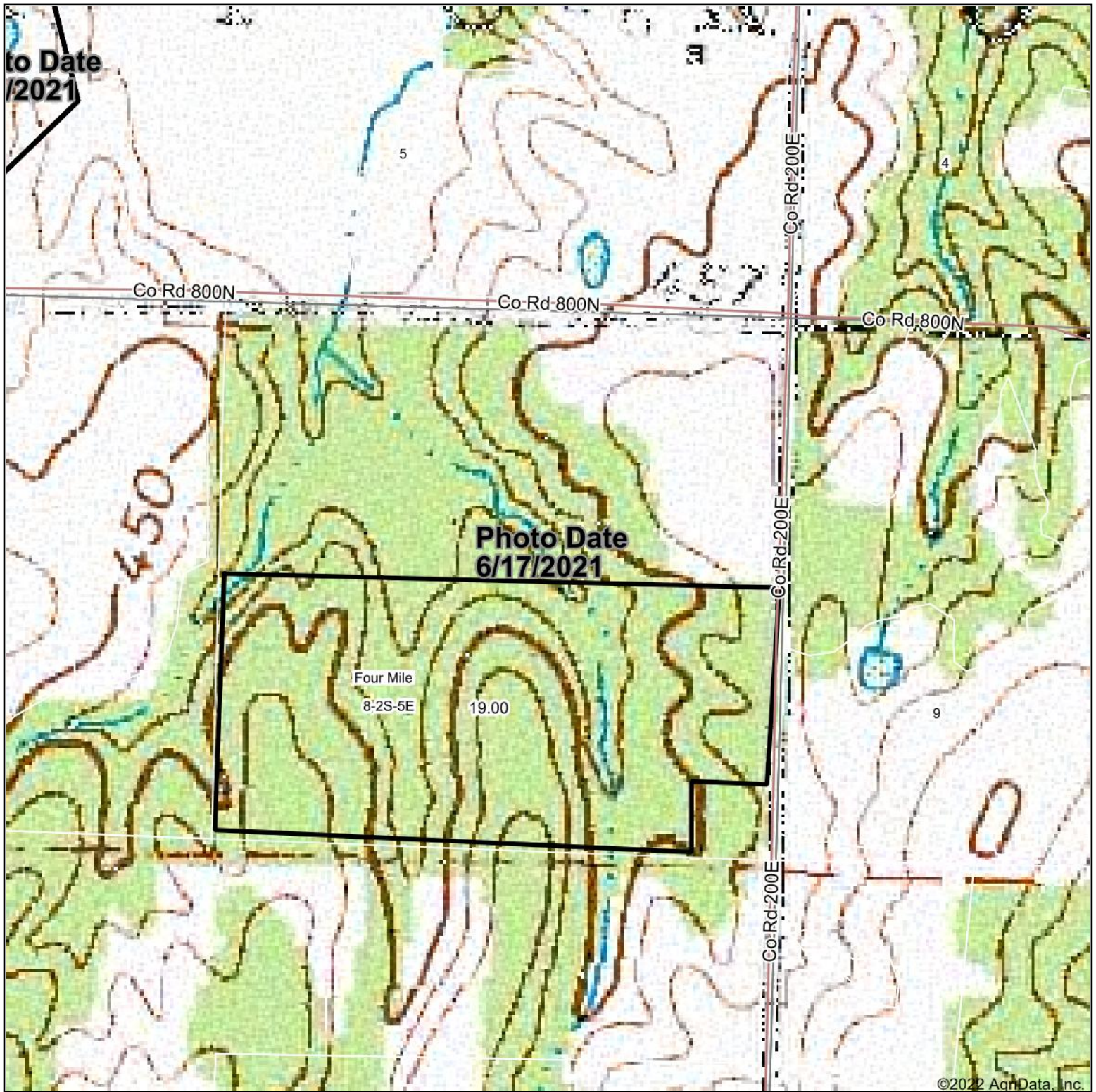
\*\* Indexes adjusted for slope and erosion according to Bulletin 811 Table S3

e Soils in the well drained group were not rated for grass-legume and are shown with a zero "0".

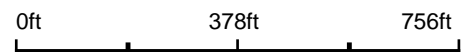
Soils data provided by USDA and NRCS. Soils data provided by University of Illinois at Champaign-Urbana.



# Topography Map



map center: 38° 22' 12.77, -88° 39' 52.42



**8-2S-5E**  
**Wayne County**  
**Illinois**



Maps Provided By:



© AgriData, Inc. 2021

www.AgridataInc.com

Field borders provided by Farm Service Agency as of 5/21/2008.