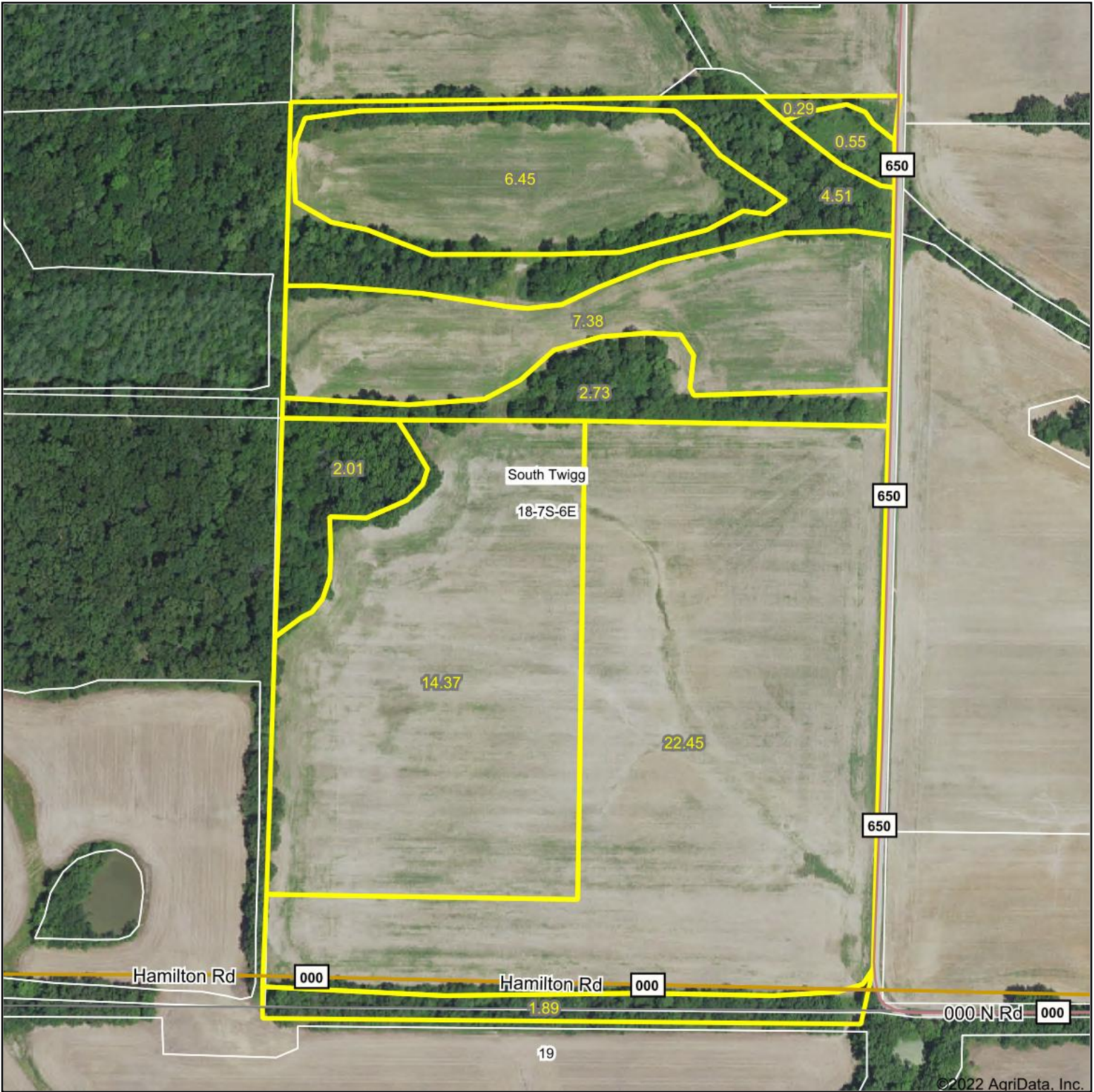


Aerial Map



©2022 AgriData, Inc.

Map Center: 37° 54' 34.43, -88° 35' 21.02



18-7S-6E
Hamilton County
Illinois



2/24/2022



Maps Provided By:



© AgriData, Inc. 2021

www.AgriDataInc.com

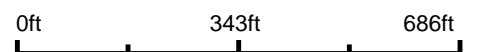
Field borders provided by Farm Service Agency as of 5/21/2008.

Topography Map



©2022 AgriData, Inc.

map center: 37° 54' 34.43, -88° 35' 21.02



18-7S-6E
Hamilton County
Illinois



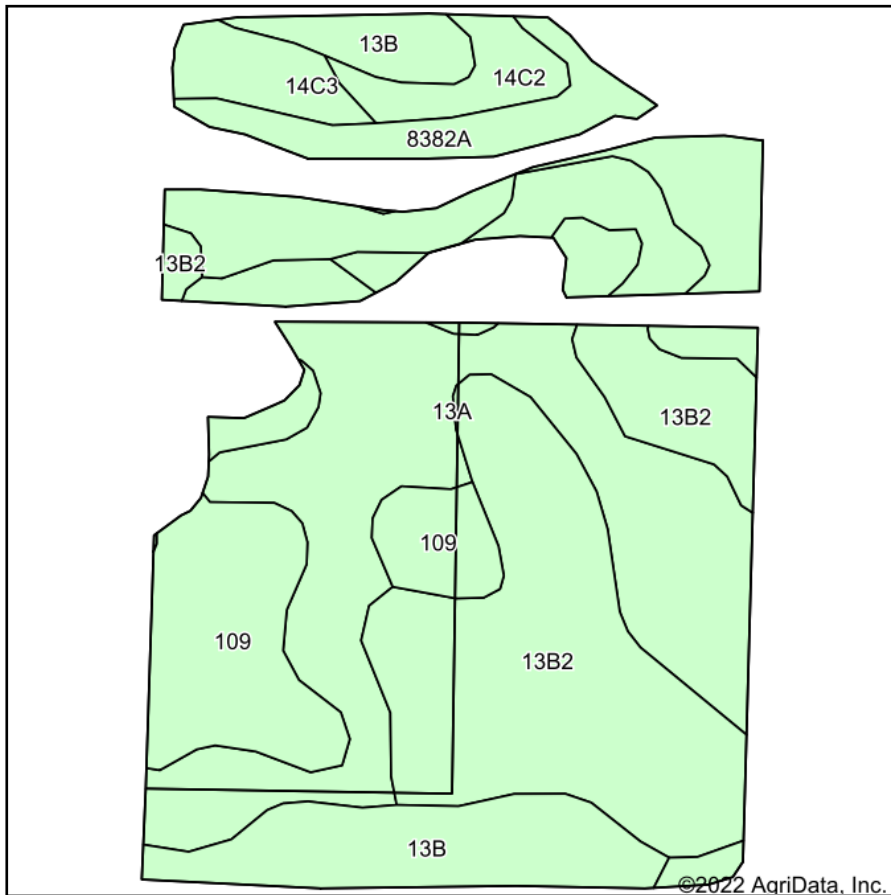
2/24/2022



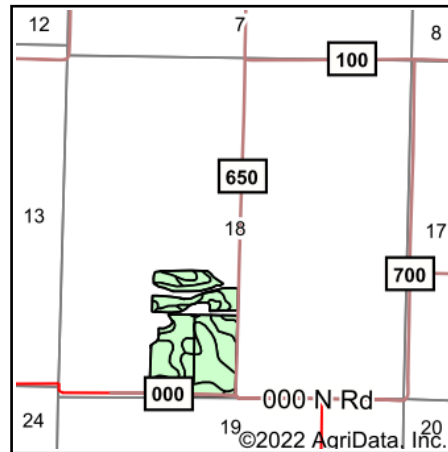
Maps Provided By:

CUSTOMIZED ONLINE MAPPING
© AgriData, Inc. 2021 www.AgriDataInc.com

Soils Map



Soils data provided by USDA and NRCS.



State: **Illinois**
 County: **Hamilton**
 Location: **18-7S-6E**
 Township: **South Twigg**
 Acres: **50.65**
 Date: **2/24/2022**



Area Symbol: IL065, Soil Area Version: 16

Code	Soil Description	Acres	Percent of field	Corn Bu/A	Soybeans Bu/A	Wheat Bu/A	Grass-legume e hay, T/A	Crop productivity index for optimum management
**13B2	Bluford silt loam, 2 to 5 percent slopes, eroded	15.14	29.9%	**129	**42	**52	**3.22	**96
13A	Bluford silt loam, 0 to 2 percent slopes	13.89	27.4%	136	44	55	3.39	101
109	Raccoon silt loam	6.41	12.7%	144	46	56	0.00	106
**13B	Bluford silt loam, 2 to 5 percent slopes	5.54	10.9%	**135	**44	**54	**3.36	**100
8382A	Belknap silt loam, 0 to 2 percent slopes, occasionally flooded	4.36	8.6%	156	52	63	4.89	117
**14C3	Ava silt loam, 5 to 10 percent slopes, severely eroded	3.61	7.1%	**100	**33	**41	0.00	**74
**14C2	Ava silt loam, 5 to 10 percent slopes, eroded	1.42	2.8%	**122	**40	**50	0.00	**90
337	Creal silt loam	0.28	0.6%	151	47	59	0.00	110
Weighted Average				133.7	43.5	53.7	2.68	99.2

Table: Optimum Crop Productivity Ratings for Illinois Soil by K.R. Olson and J.M. Lang, Office of Research, ACES, University of Illinois at Champaign-Urbana. Version: 1/2/2012 Amended Table S2 B811

Crop yields and productivity indices for optimum management (B811) are maintained at the following NRES web site: <http://soilproductivity.nres.illinois.edu/>

** Indexes adjusted for slope and erosion according to Bulletin 811 Table S3

e Soils in the well drained group were not rated for grass-legume and are shown with a zero "0".

Soils data provided by USDA and NRCS. Soils data provided by University of Illinois at Champaign-Urbana.