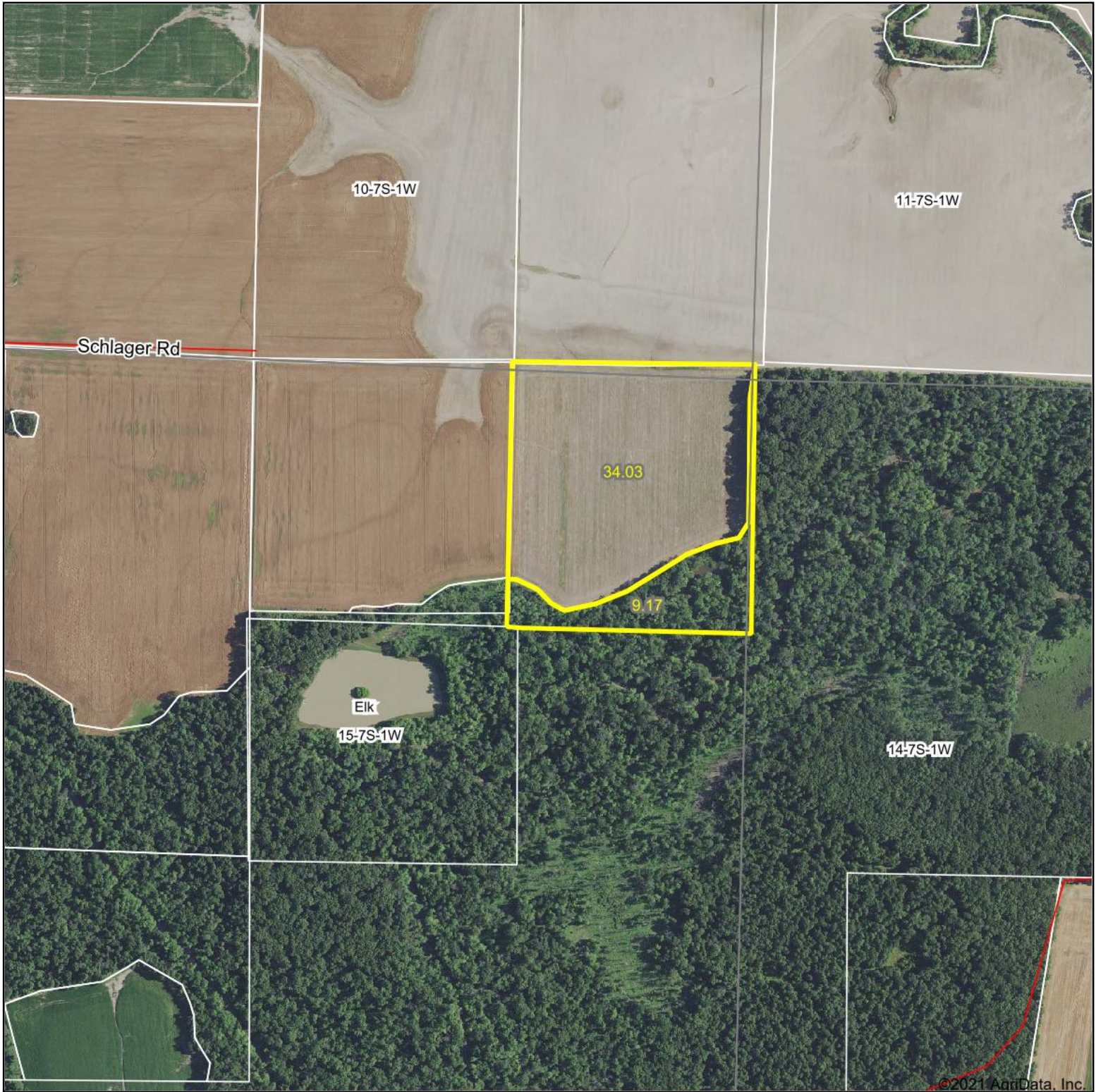
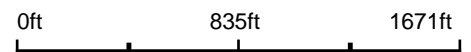


Aerial Map



Map Center: 37° 55' 5.26, -89° 11' 29.25



15-7S-1W
Jackson County
Illinois

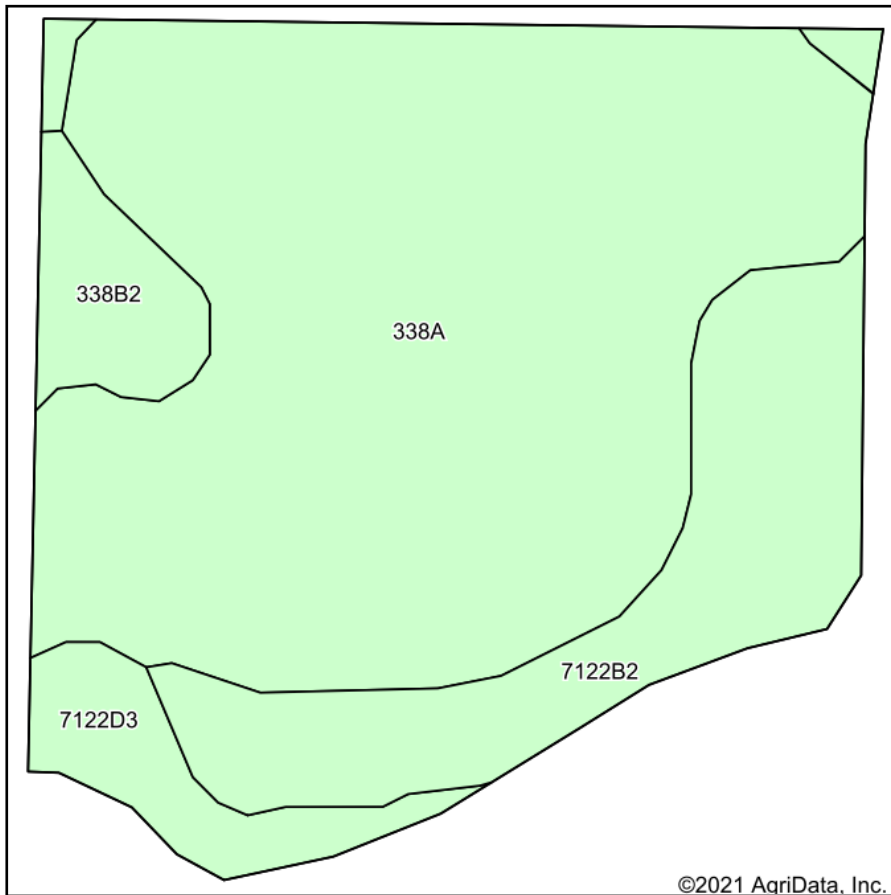


12/21/2021

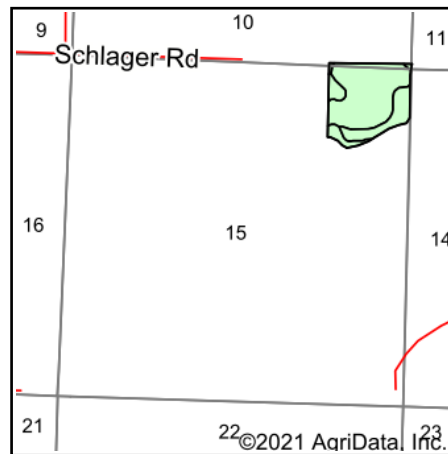
Maps Provided By:
 **surety**
CUSTOMIZED ONLINE MAPPING
© AgriData, Inc. 2021 www.AgriDataInc.com

Field borders provided by Farm Service Agency as of 5/21/2008.

Soils Map



Soils data provided by USDA and NRCS.



State: **Illinois**
 County: **Jackson**
 Location: **15-7S-1W**
 Township: **Elk**
 Acres: **34.03**
 Date: **12/21/2021**



Maps Provided By:



© AgriData, Inc. 2021

www.AgriDataInc.com



Area Symbol: IL077, Soil Area Version: 21

Code	Soil Description	Acres	Percent of field	Corn Bu/A	Soybeans Bu/A	Wheat Bu/A	Crop productivity index for optimum management
338A	Hurst silt loam, 0 to 2 percent slopes	23.42	68.8%	134	44	55	100
7122B2	Colp silt loam, 2 to 5 percent slopes, eroded, rarely flooded	6.94	20.4%	134	42	56	98
7122D3	Colp silty clay loam, 10 to 18 percent slopes, severely eroded, rarely flooded	1.95	5.7%	134	42	56	98
**338B2	Hurst silt loam, 2 to 5 percent slopes, eroded	1.72	5.1%	**125	**41	**51	**93
Weighted Average				133.5	43.3	55.1	99.1

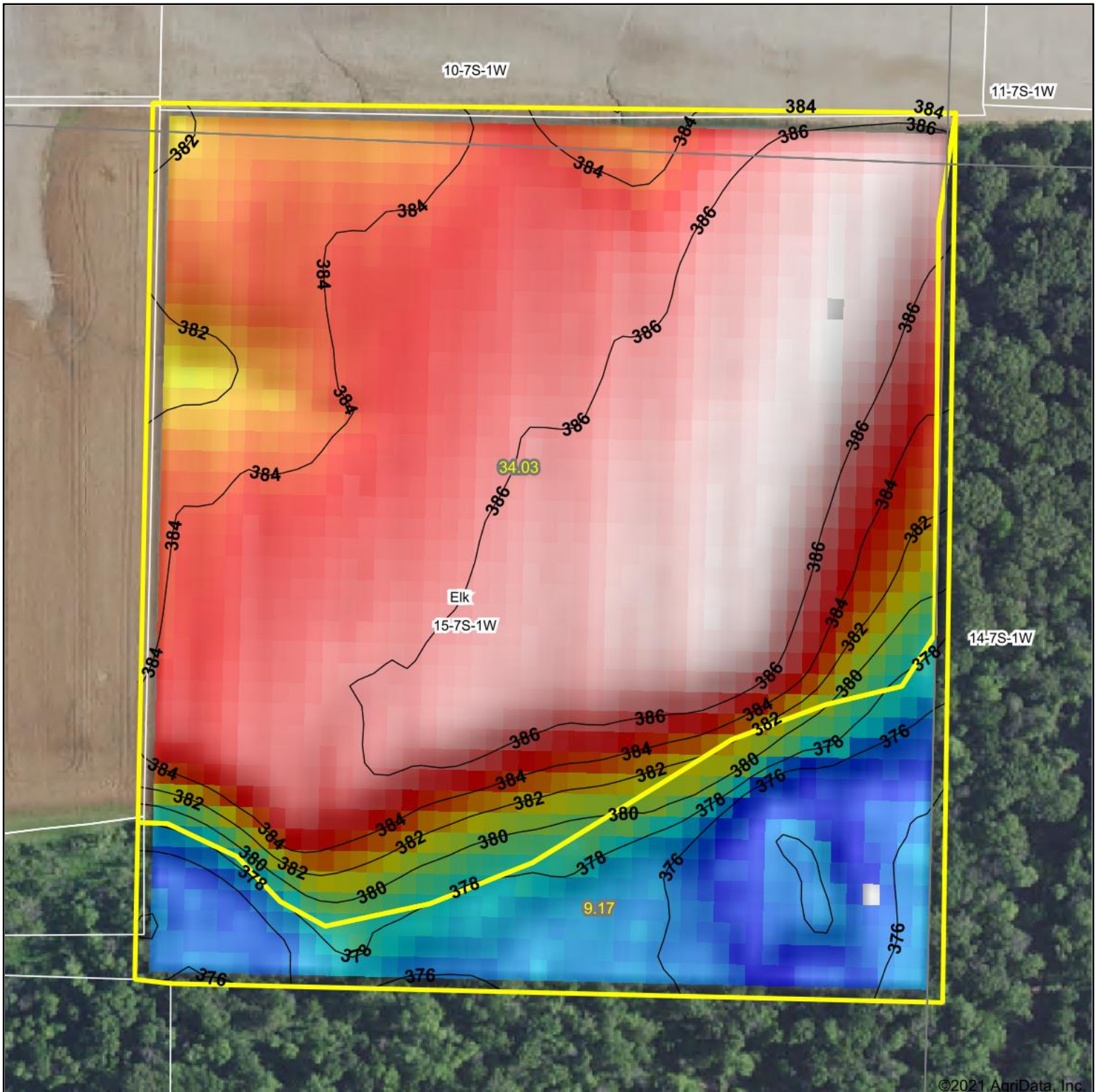
Table: Optimum Crop Productivity Ratings for Illinois Soil by K.R. Olson and J.M. Lang, Office of Research, ACES, University of Illinois at Champaign-Urbana. Version: 1/2/2012 Amended Table S2 B811

Crop yields and productivity indices for optimum management (B811) are maintained at the following NRES web site: <http://soilproductivity.nres.illinois.edu/>

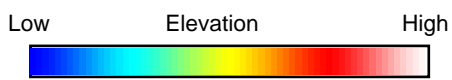
** Indexes adjusted for slope and erosion according to Bulletin 811 Table S3

Soils data provided by USDA and NRCS. Soils data provided by University of Illinois at Champaign-Urbana.

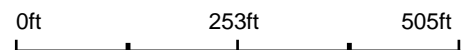
Topography Hillshade



©2021 AgriData, Inc



Source: USGS 10 meter dem
 Interval(ft): 2
 Min: 374.1
 Max: 387.8
 Range: 13.7
 Average: 383.2
 Standard Deviation: 3.9 ft



15-7S-1W
Jackson County
Illinois

map center: 37° 55' 5.26, -89° 11' 29.25



Maps Provided By:



© AgriData, Inc. 2021 www.AgriDataInc.com

Field borders provided by Farm Service Agency as of 5/21/2008.