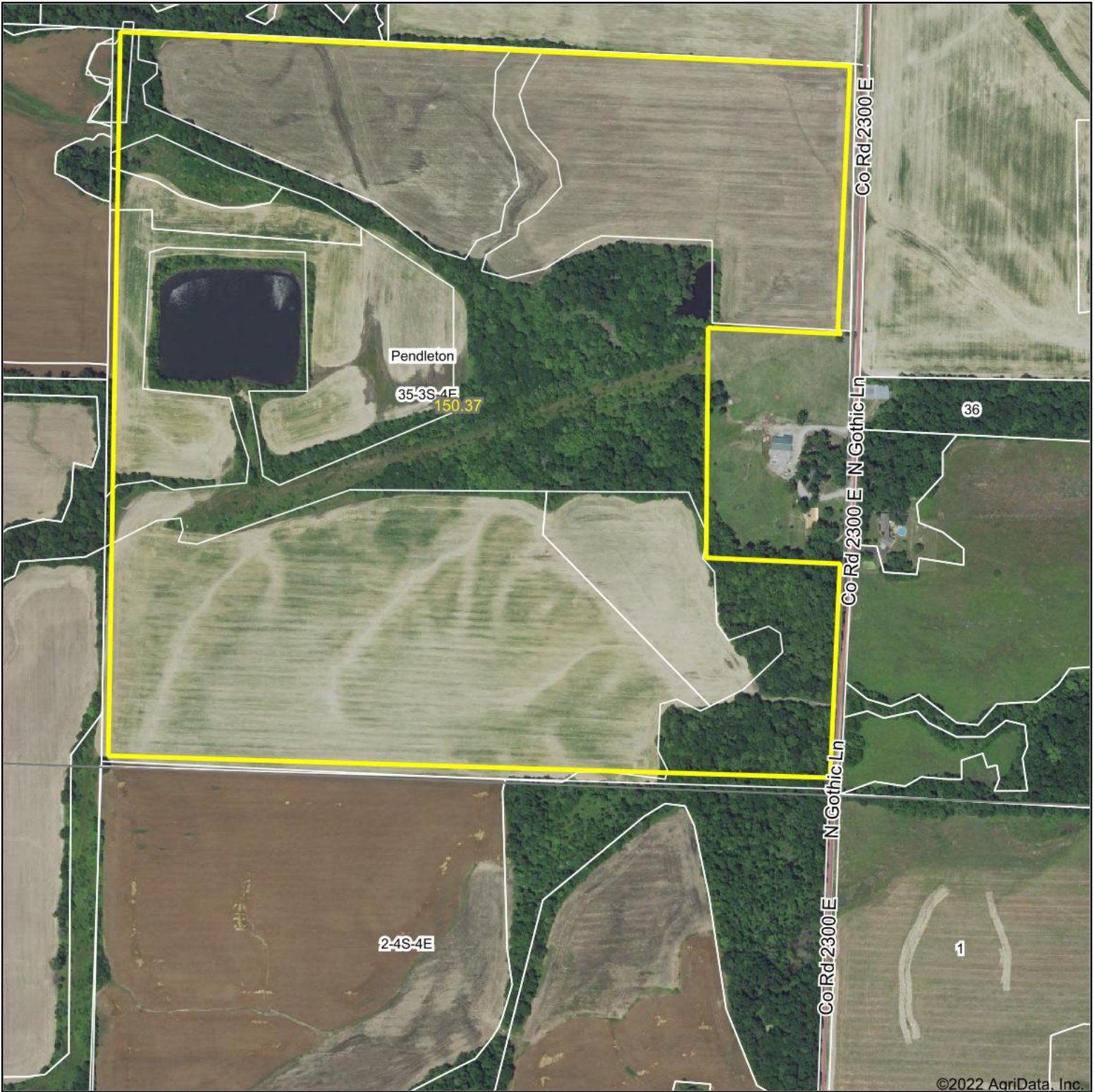


Aerial Map



Map Center: 38° 12' 55.24, -88° 43' 33.38



35-3S-4E
Jefferson County
Illinois



2/24/2022



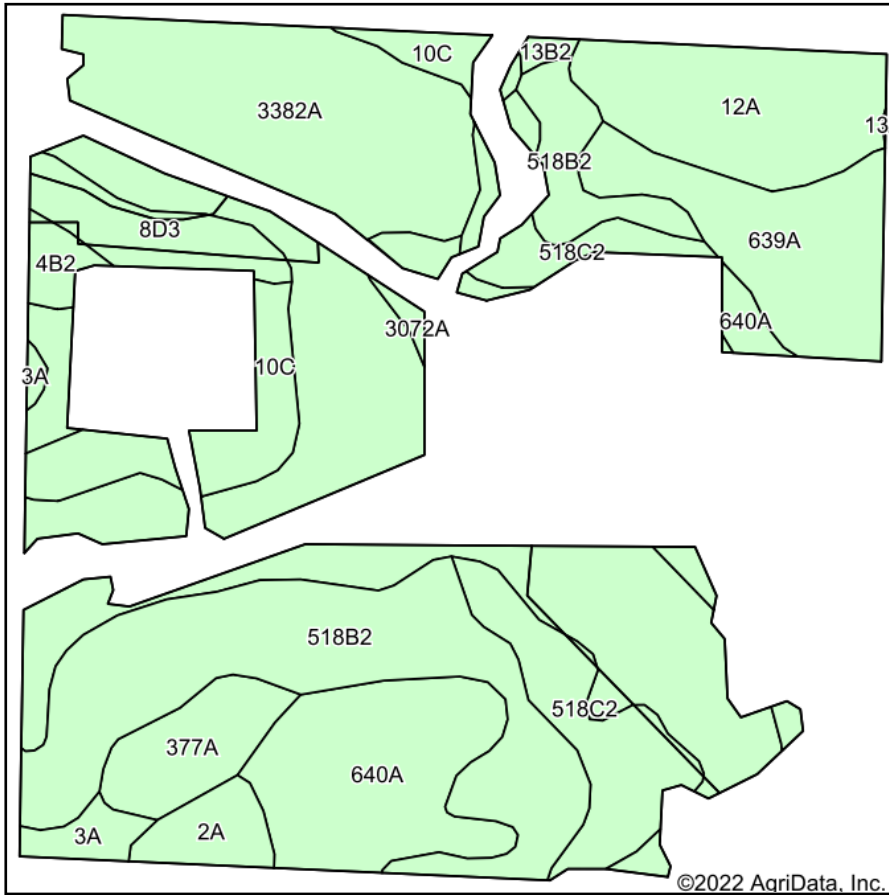
Maps Provided By:



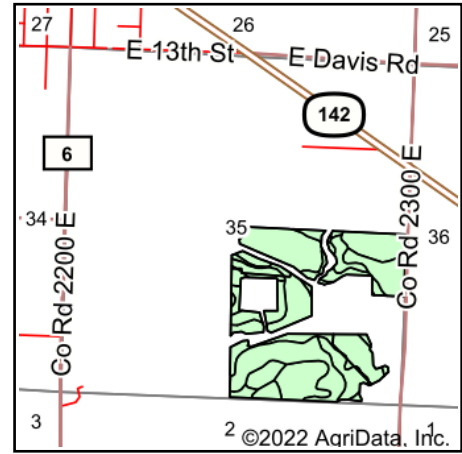
© AgriData, Inc. 2021 www.AgriDataInc.com

Field borders provided by Farm Service Agency as of 5/21/2008.

Soils Map



Soils data provided by USDA and NRCS.



State: **Illinois**
 County: **Jefferson**
 Location: **35-3S-4E**
 Township: **Pendleton**
 Acres: **109.43**
 Date: **2/24/2022**



Maps Provided By:



© AgriData, Inc. 2021

www.AgriDataInc.com



Area Symbol: IL081, Soil Area Version: 14

Code	Soil Description	Acres	Percent of field	Corn Bu/A	Soybeans Bu/A	Wheat Bu/A	Grass-legume e hay, T/A	Crop productivity index for optimum management
3382A	Belknap silt loam, 0 to 2 percent slopes, frequently flooded	36.18	33.1%	156		52	63	4.89
**518B2	Rend silt loam, 2 to 5 percent slopes, eroded	19.00	17.4%	**132		**41	**52	0.00
640A	Bluford silt loam, bench, 0 to 2 percent slopes	9.94	9.1%	136		44	55	0.00
12A	Wynoose silt loam, 0 to 2 percent slopes	8.21	7.5%	128		42	51	4.26
**518C2	Rend silt loam, 5 to 10 percent slopes, eroded	8.02	7.3%	**128		**40	**50	0.00
639A	Wynoose silt loam, bench, 0 to 2 percent slopes	7.83	7.2%	128		40	51	4.26
**10C	Plumfield silty clay loam, 5 to 10 percent slopes	5.35	4.9%	**103		**34	**39	**3.37
377A	Hoyleton silt loam, bench, 0 to 2 percent slopes	3.62	3.3%	146		46	58	4.64
**8D3	Hickory clay loam, 10 to 18 percent slopes, severely eroded	3.41	3.1%	**98		**33	**40	0.00
3072A	Sharon silt loam, 0 to 2 percent slopes, frequently flooded	2.00	1.8%	164		53	63	0.00
2A	Cisne silt loam, 0 to 2 percent slopes	1.98	1.8%	149		46	59	4.64
3A	Hoyleton silt loam, 0 to 2 percent slopes	1.37	1.3%	146		46	58	4.64
**14B2	Ava silt loam, 2 to 5 percent slopes, eroded	1.17	1.1%	**126		**41	**51	0.00
**4B2	Richview silt loam, 2 to 5 percent slopes, eroded	1.04	1.0%	**144		**46	**57	0.00
**13B2	Bluford silt loam, 2 to 5 percent slopes, eroded	0.31	0.3%	**129		**42	**52	**3.22
Weighted Average				138.5	44.8	55.2	2.71	103.5

Maps Provided By:



surety[®]
CUSTOMIZED ONLINE MAPPING

Table: Optimum Crop Productivity Ratings for Illinois Soil by K.R. Olson and J.M. Lang, Office of Research, ACES, University of Illinois at Champaign-Urbana. Version: 1/2/2012 Amended Table S2 B811

Crop yields and productivity indices for optimum management (B811) are maintained at the following NRES web site: <http://soilproductivity.nres.illinois.edu/>

** Indexes adjusted for slope and erosion according to Bulletin 811 Table S3

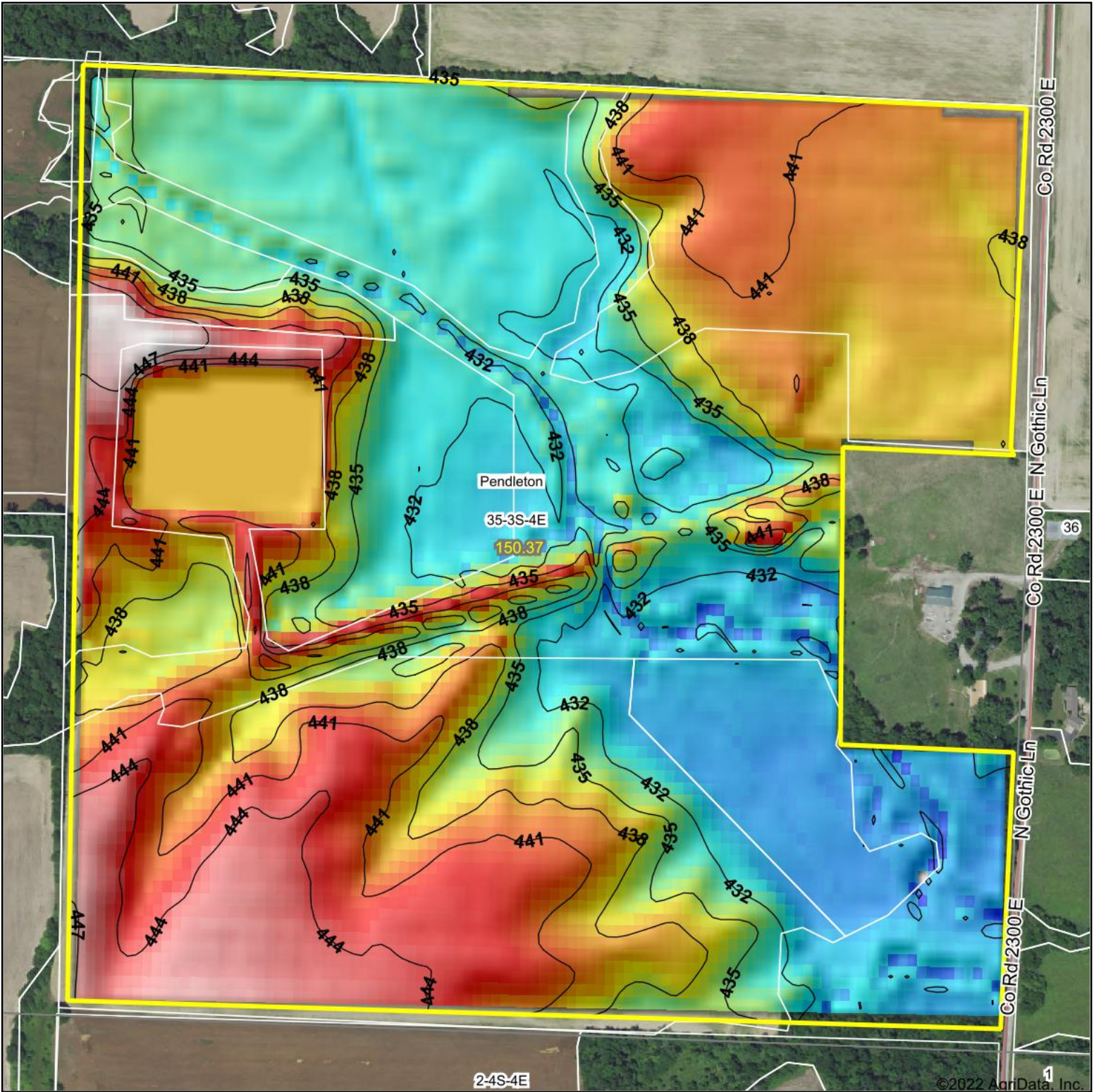
e Soils in the well drained group were not rated for grass-legume and are shown with a zero "0".

Soils data provided by USDA and NRCSS. Soils data provided by University of Illinois at Champaign-Urbana

© AgriData, Inc. 2021

www.AgrIDataInc.com

Topography Hillshade



<p>Low Elevation High</p>	<p>Source: USGS 10 meter dem Interval(ft): 3 Min: 426.4 Max: 448.8 Range: 22.4 Average: 436.9 Standard Deviation: 4.89 ft</p>	<p>0ft 439ft 879ft</p> <p>35-3S-4E Jefferson County Illinois</p> <p>2/24/2022</p> <p>map center: 38° 12' 55.24, -88° 43' 33.38</p>
---------------------------	---	--



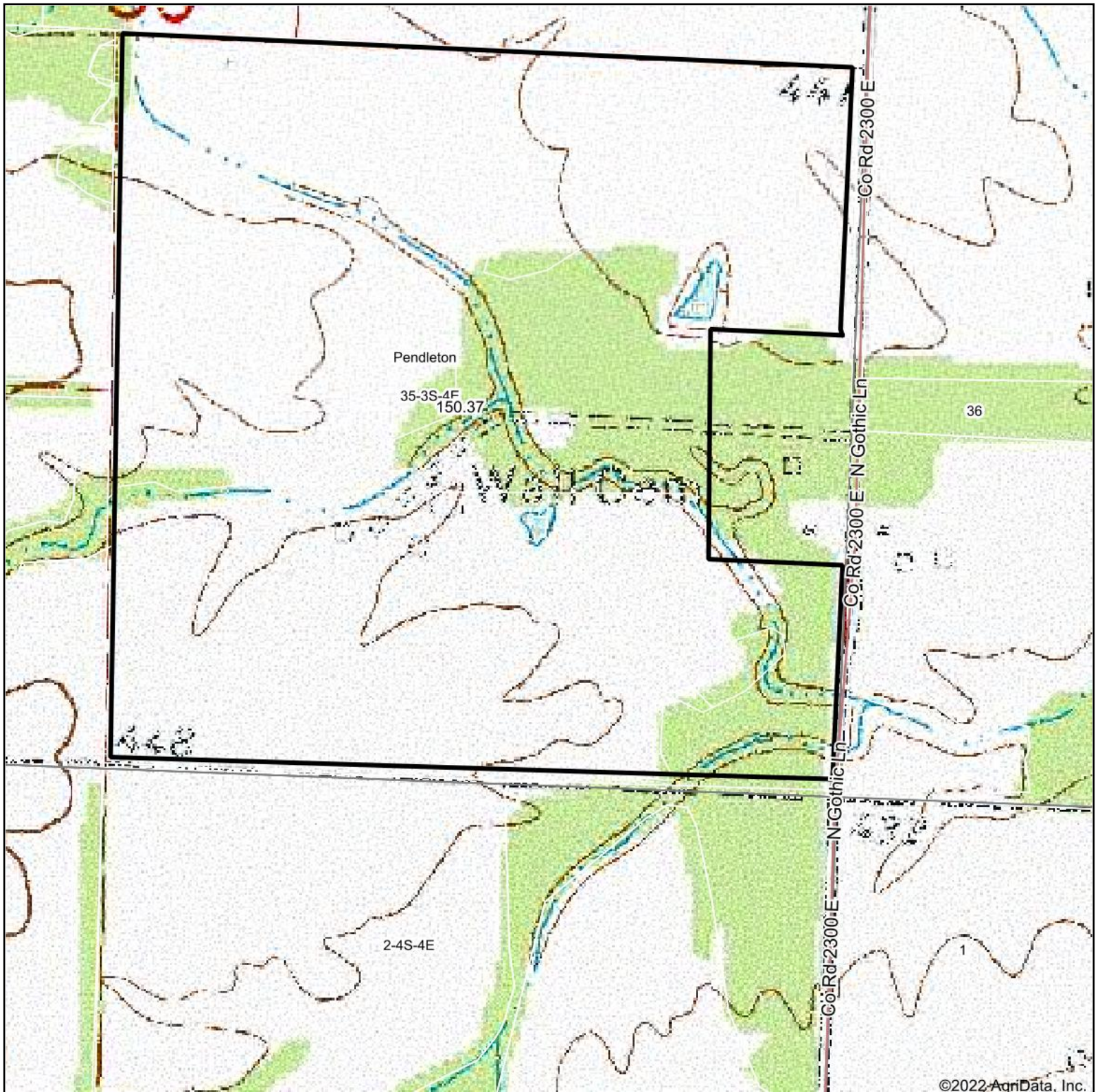
Maps Provided By:



© AgriData, Inc. 2021 www.AgriDataInc.com

Field borders provided by Farm Service Agency as of 5/21/2008.

Topography Map



map center: 38° 12' 55.24, -88° 43' 33.38



35-3S-4E
Jefferson County
Illinois



2/24/2022



Maps Provided By:



© AgriData, Inc. 2021

www.AgriDataInc.com