

# Aerial Map



Map Center: 38° 13' 10.78, -88° 43' 15.34



**36-3S-4E**  
**Jefferson County**  
**Illinois**

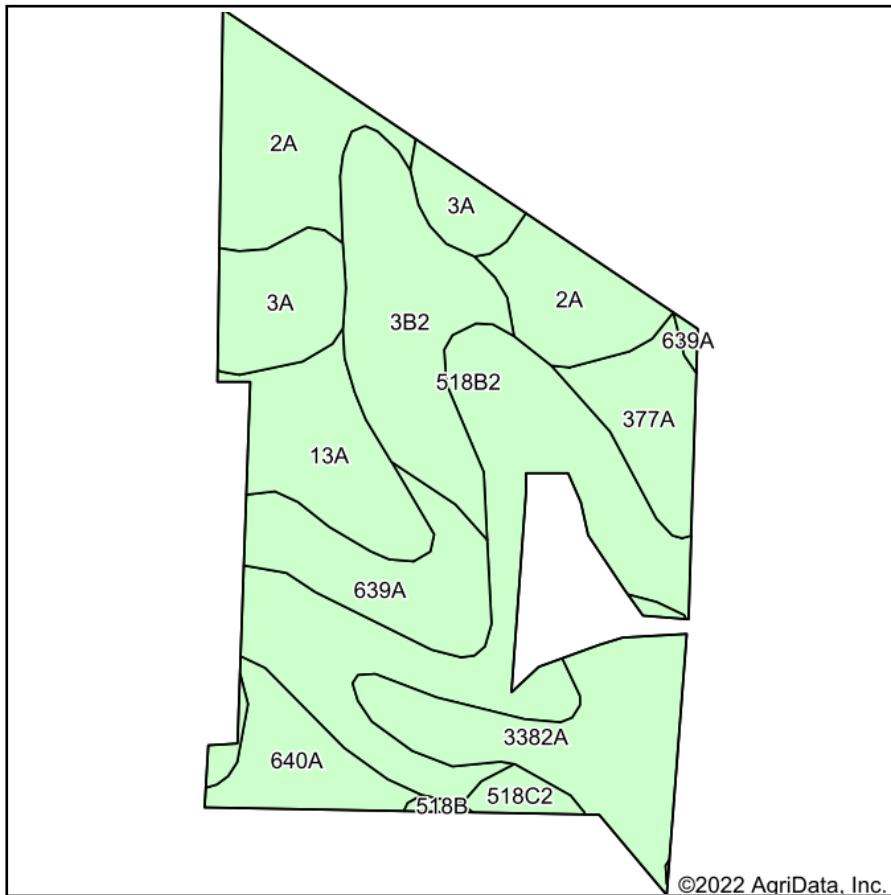


2/23/2022

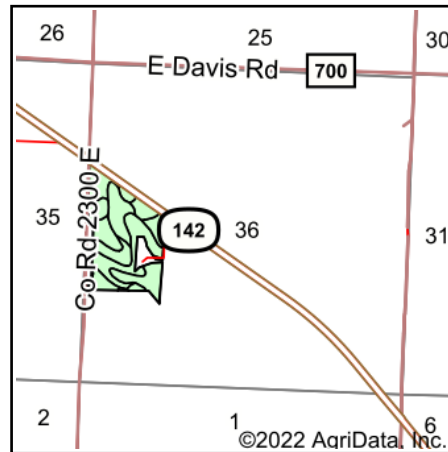
Maps Provided By:  
 **surety**  
CUSTOMIZED ONLINE MAPPING  
© AgriData, Inc. 2021      www.AgriDataInc.com

Field borders provided by Farm Service Agency as of 5/21/2008.

# Soils Map



Soils data provided by USDA and NRCS.



State: **Illinois**  
 County: **Jefferson**  
 Location: **36-3S-4E**  
 Township: **Pendleton**  
 Acres: **45.3**  
 Date: **2/23/2022**



Area Symbol: IL081, Soil Area Version: 14

Code	Soil Description	Acres	Percent of field	Corn Bu/A	Soybeans Bu/A	Wheat Bu/A	Grass-legume e hay, T/A	Crop productivity index for optimum management
**518B2	Rend silt loam, 2 to 5 percent slopes, eroded	10.24	22.6%	**132	**41	**52	0.00	**98
2A	Cisne silt loam, 0 to 2 percent slopes	6.64	14.7%	149	46	59	4.64	109
**3B2	Hoyleton silt loam, 2 to 5 percent slopes, eroded	5.90	13.0%	**139	**44	**55	**4.41	**103
3382A	Belknap silt loam, 0 to 2 percent slopes, frequently flooded	5.53	12.2%	156	52	63	4.89	117
639A	Wynoose silt loam, bench, 0 to 2 percent slopes	4.05	8.9%	128	40	51	4.26	95
13A	Bluford silt loam, 0 to 2 percent slopes	3.73	8.2%	136	44	55	3.39	101
3A	Hoyleton silt loam, 0 to 2 percent slopes	3.60	7.9%	146	46	58	4.64	108
377A	Hoyleton silt loam, bench, 0 to 2 percent slopes	2.46	5.4%	146	46	58	4.64	108
640A	Bluford silt loam, bench, 0 to 2 percent slopes	2.43	5.4%	136	44	55	0.00	101
**518C2	Rend silt loam, 5 to 10 percent slopes, eroded	0.60	1.3%	**128	**40	**50	0.00	**95
**518B	Rend silt loam, 2 to 5 percent slopes	0.12	0.3%	**141	**44	**55	0.00	**104
<b>Weighted Average</b>				<b>140.4</b>	<b>44.4</b>	<b>55.9</b>	<b>3.13</b>	<b>104</b>

**Table: Optimum Crop Productivity Ratings for Illinois Soil by K.R. Olson and J.M. Lang, Office of Research, ACES, University of Illinois at Champaign-Urbana.** Version: 1/2/2012 Amended Table S2 B811

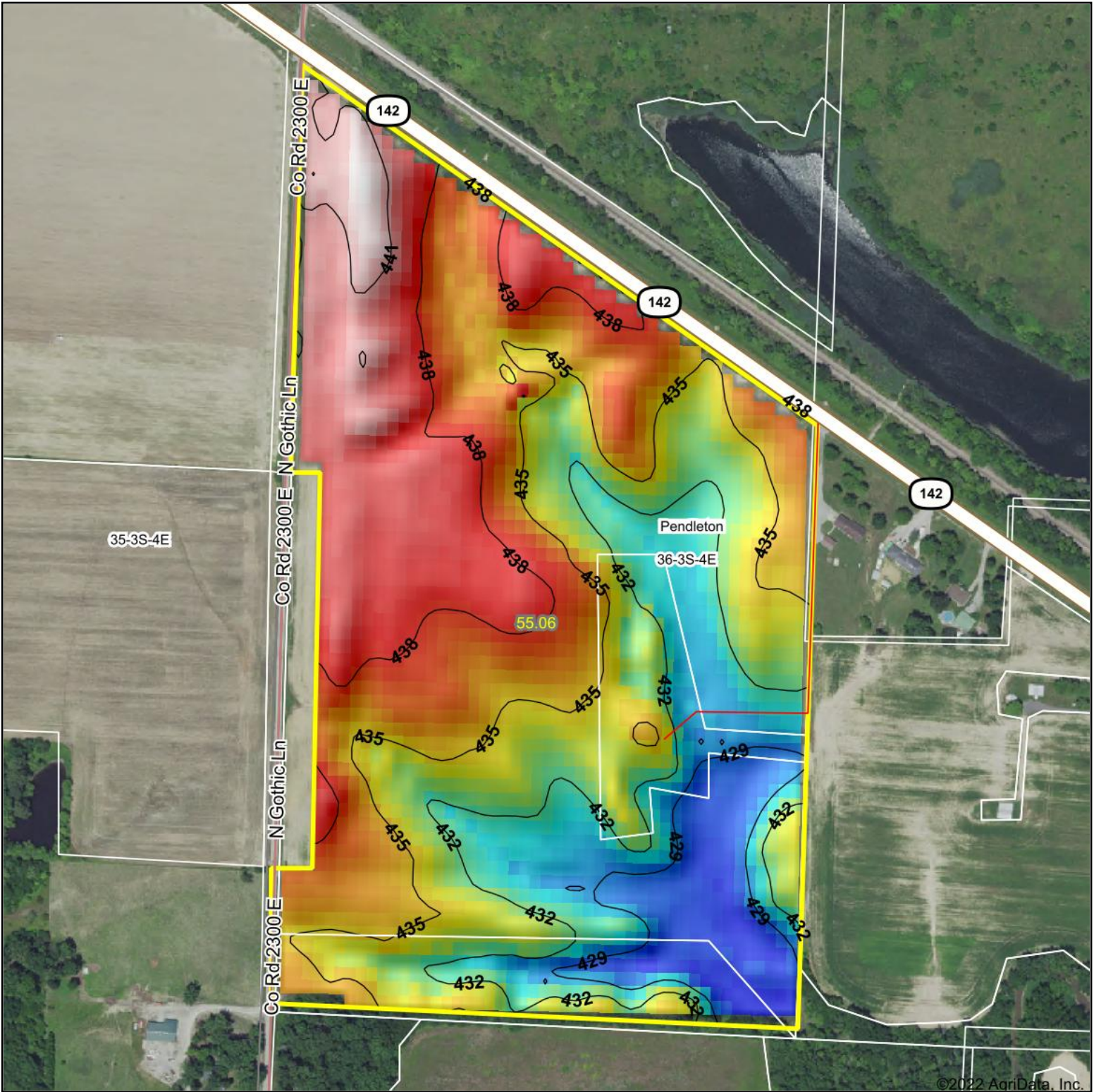
Crop yields and productivity indices for optimum management (B811) are maintained at the following NRES web site: <http://soilproductivity.nres.illinois.edu/>

\*\* Indexes adjusted for slope and erosion according to Bulletin 811 Table S3

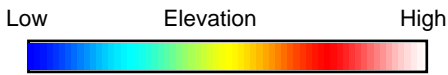
e Soils in the well drained group were not rated for grass-legume and are shown with a zero "0".

Soils data provided by USDA and NRCS. Soils data provided by University of Illinois at Champaign-Urbana.

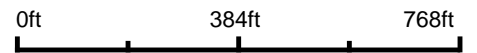
# Topography Hillshade



©2022 AgriData, Inc.



Source: USGS 10 meter dem  
 Interval(ft): 3  
 Min: 426.7  
 Max: 442.1  
 Range: 15.4  
 Average: 434.7  
 Standard Deviation: 3.71 ft



**36-3S-4E**  
**Jefferson County**  
**Illinois**

map center: 38° 13' 10.78, -88° 43' 15.34



Maps Provided By:



© AgriData, Inc. 2021 www.AgriDataInc.com

Field borders provided by Farm Service Agency as of 5/21/2008.