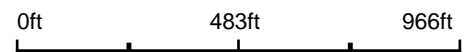


Aerial Map



Map Center: 37° 55' 55.49, -89° 12' 37.64



9-7S-1W
Jackson County
Illinois

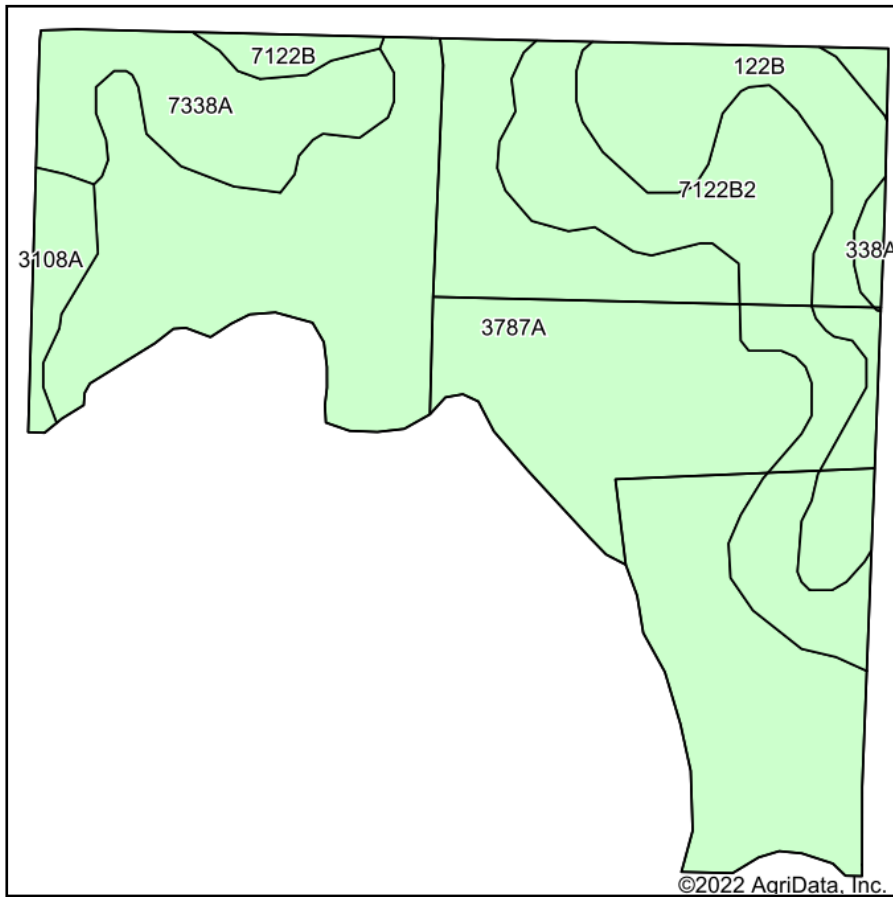


1/28/2022

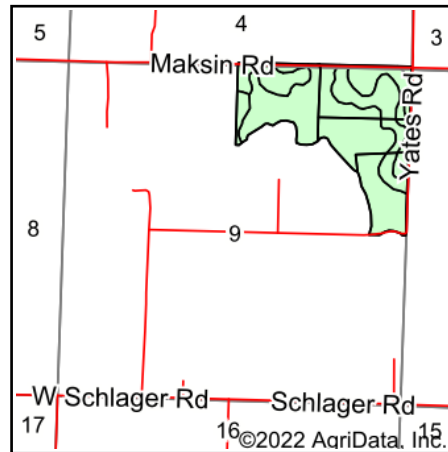
Maps Provided By:
surety
CUSTOMIZED ONLINE MAPPING
© AgriData, Inc. 2021 www.AgriDataInc.com

Field borders provided by Farm Service Agency as of 5/21/2008.

Soils Map



Soils data provided by USDA and NRCS.



State: **Illinois**
 County: **Jackson**
 Location: **9-7S-1W**
 Township: **Elk**
 Acres: **98.34**
 Date: **2/7/2022**



Maps Provided By:



© AgriData, Inc. 2021

www.AgriDataInc.com



Area Symbol: IL077, Soil Area Version: 21

Code	Soil Description	Acres	Percent of field	Corn Bu/A	Soybeans Bu/A	Wheat Bu/A	Crop productivity index for optimum management
3787A	Banic silt loam, 0 to 2 percent slopes, frequently flooded	56.85	57.8%	142	47	56	106
7122B2	Colp silt loam, 2 to 5 percent slopes, eroded, rarely flooded	16.23	16.5%	134	42	56	98
**122B	Colp silt loam, 2 to 5 percent slopes	11.52	11.7%	**133	**42	**55	**97
7338A	Hurst silt loam, 0 to 2 percent slopes, rarely flooded	8.84	9.0%	134	44	55	100
3108A	Bonnie silt loam, 0 to 2 percent slopes, frequently flooded	2.41	2.5%	149	49	59	111
7122B	Colp silt loam, 2 to 5 percent slopes, rarely flooded	1.29	1.3%	134	42	56	98
338A	Hurst silt loam, 0 to 2 percent slopes	1.20	1.2%	134	44	55	100
Weighted Average				138.9	45.3	55.9	103

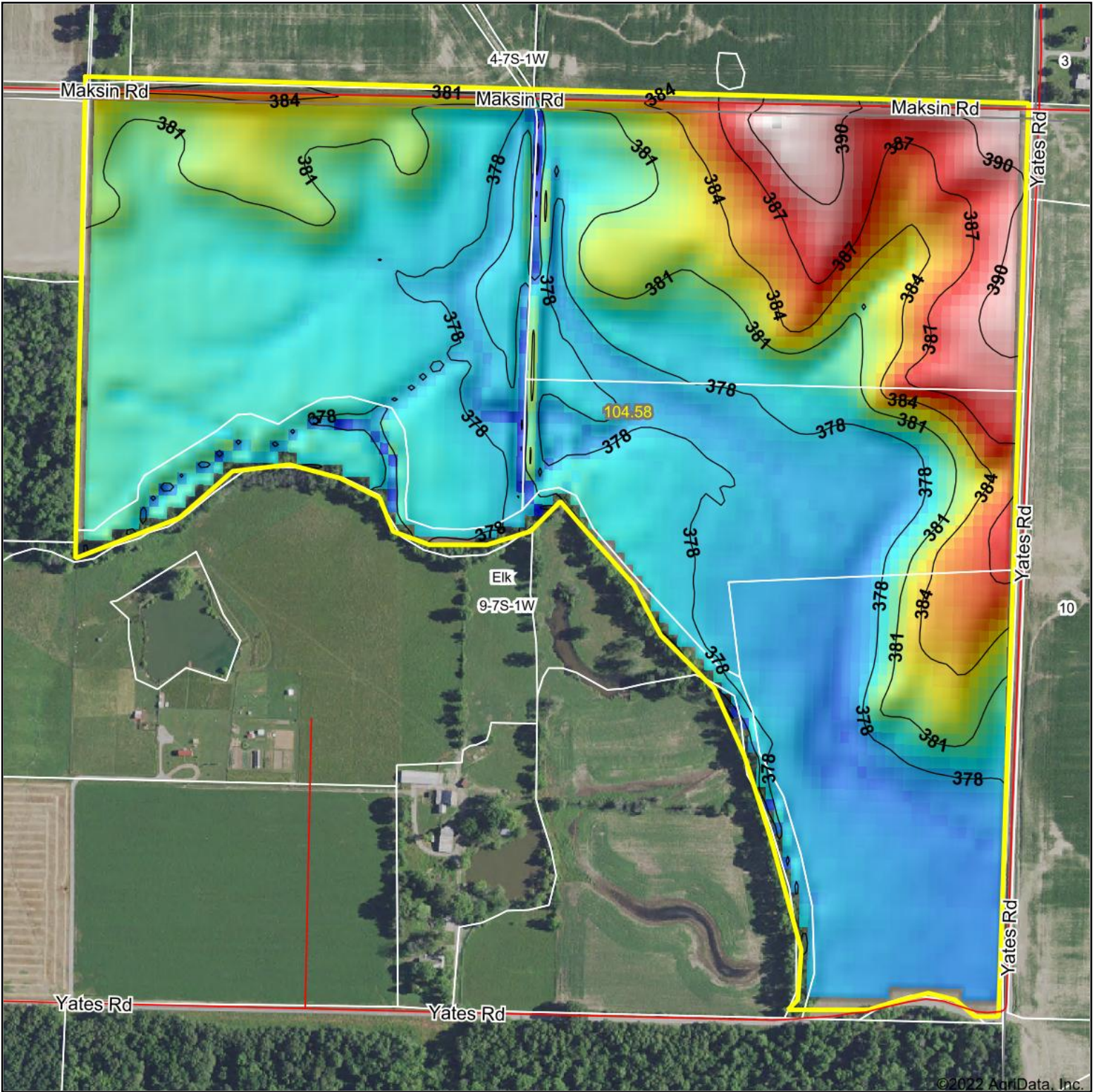
Table: Optimum Crop Productivity Ratings for Illinois Soil by K.R. Olson and J.M. Lang, Office of Research, ACES, University of Illinois at Champaign-Urbana. Version: 1/2/2012 Amended Table S2 B811

Crop yields and productivity indices for optimum management (B811) are maintained at the following NRES web site: <http://soilproductivity.nres.illinois.edu/>

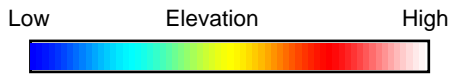
** Indexes adjusted for slope and erosion according to Bulletin 811 Table S3

Soils data provided by USDA and NRCS. Soils data provided by University of Illinois at Champaign-Urbana.

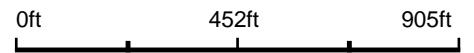
Topography Hillshade



©2022 AgriData, Inc.



Source: USGS 10 meter dem
 Interval(ft): 3
 Min: 374.3
 Max: 391.8
 Range: 17.5
 Average: 380.4
 Standard Deviation: 3.71 ft



9-7S-1W
Jackson County
Illinois

map center: 37° 55' 51.72, -89° 12' 49.06



Maps Provided By:



© AgriData, Inc. 2021 www.AgriDataInc.com

Field borders provided by Farm Service Agency as of 5/21/2008.