

Aerial Map



©2022 AgriData, Inc.

Map Center: 37° 55' 35.84, -89° 15' 18.04



7-7S-1W
Jackson County
Illinois



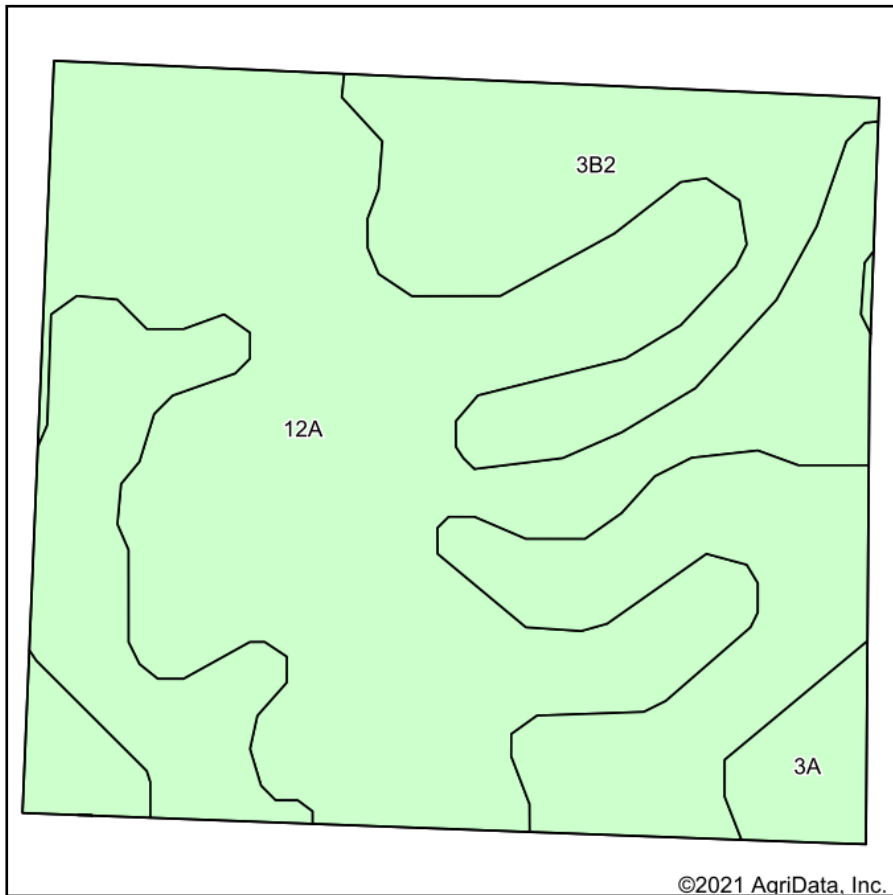
2/9/2022



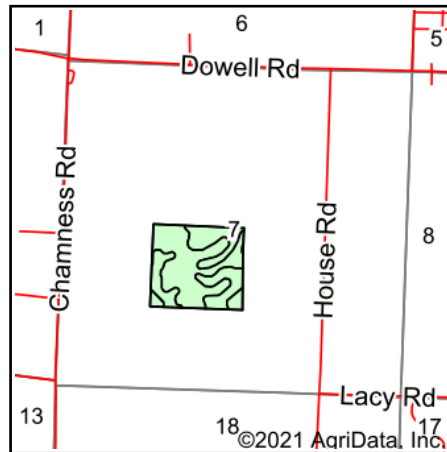
© AgriData, Inc. 2021 www.AgriDataInc.com

Field borders provided by Farm Service Agency as of 5/21/2008.

Soils Map



Soils data provided by USDA and NRCS.



State: **Illinois**
 County: **Jackson**
 Location: **7-7S-1W**
 Township: **Elk**
 Acres: **45.52**
 Date: **12/21/2021**



Maps Provided By:



© AgriData, Inc. 2021

www.AgriDataInc.com



Area Symbol: IL077, Soil Area Version: 21

Code	Soil Description	Acres	Percent of field	Corn Bu/A	Soybeans Bu/A	Wheat Bu/A	Crop productivity index for optimum management
12A	Wynoose silt loam, 0 to 2 percent slopes	25.54	56.1%	128	42	51	97
**3B2	Hoyleton silt loam, 2 to 5 percent slopes, eroded	18.55	40.8%	**139	**44	**55	**103
3A	Hoyleton silt loam, 0 to 2 percent slopes	1.43	3.1%	146	46	58	108
Weighted Average				133	42.9	52.8	99.8

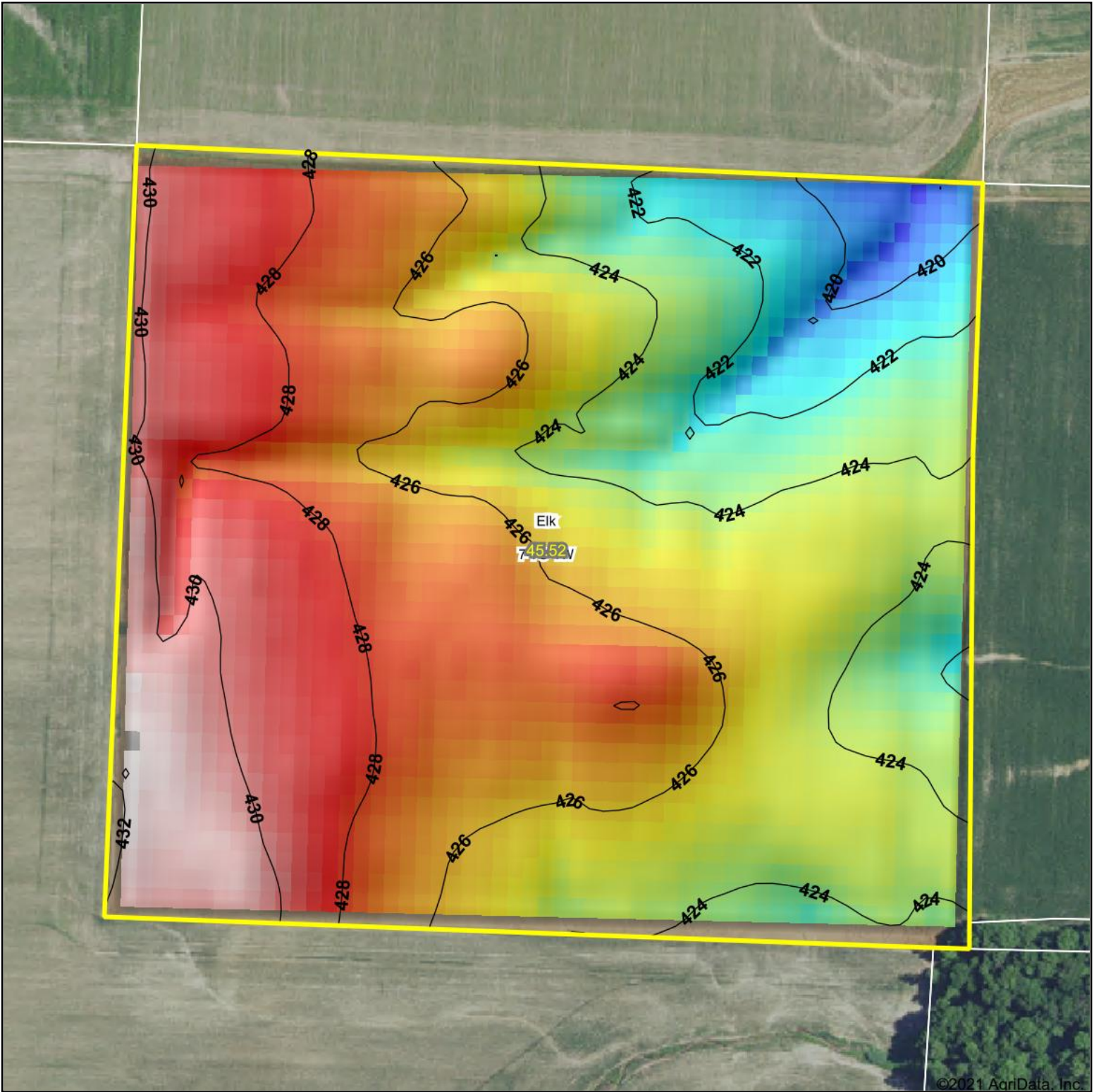
Table: Optimum Crop Productivity Ratings for Illinois Soil by K.R. Olson and J.M. Lang, Office of Research, ACES, University of Illinois at Champaign-Urbana. Version: 1/2/2012 Amended Table S2 B811

Crop yields and productivity indices for optimum management (B811) are maintained at the following NRES web site: <http://soilproductivity.nres.illinois.edu/>

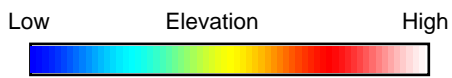
** Indexes adjusted for slope and erosion according to Bulletin 811 Table S3

Soils data provided by USDA and NRCS. Soils data provided by University of Illinois at Champaign-Urbana.

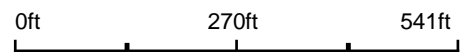
Topography Hillshade



©2021 AgriData, Inc.



Source: USGS 10 meter dem



Interval(ft): 2

Min: 417.9

Max: 432.0

Range: 14.1

Average: 425.8

Standard Deviation: 2.82 ft



12/21/2021

7-7S-1W
Jackson County
Illinois

map center: 37° 55' 33.07, -89° 15' 20.75



Maps Provided By:



© AgriData, Inc. 2021 www.AgriDataInc.com

Field borders provided by Farm Service Agency as of 5/21/2008.