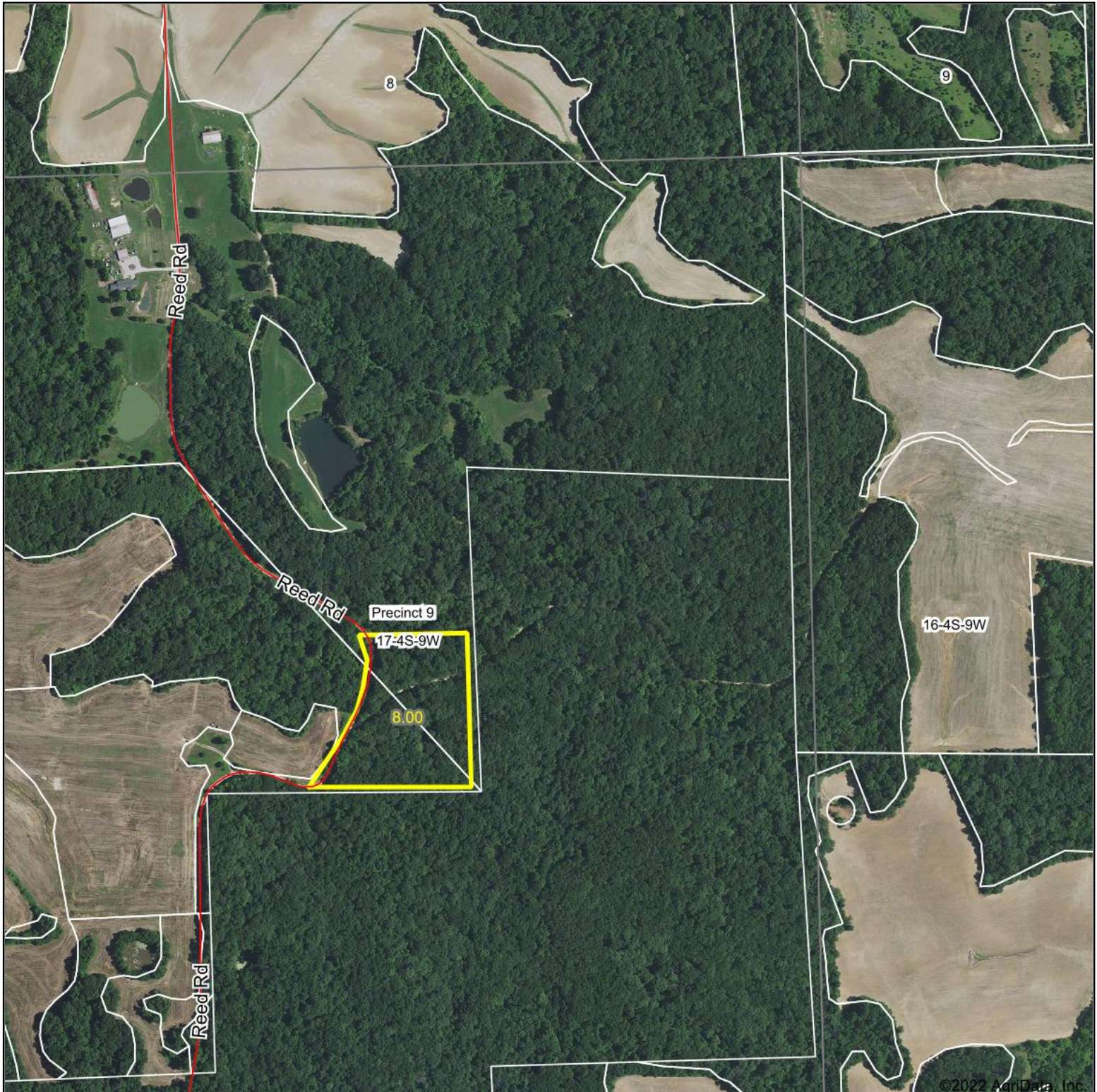


Aerial Map



©2022 AgriData, Inc.

Map Center: 38° 11' 23.16, -90° 6' 49.21

0ft 675ft 1351ft

17-4S-9W
Monroe County
Illinois



2/23/2022



Maps Provided By:

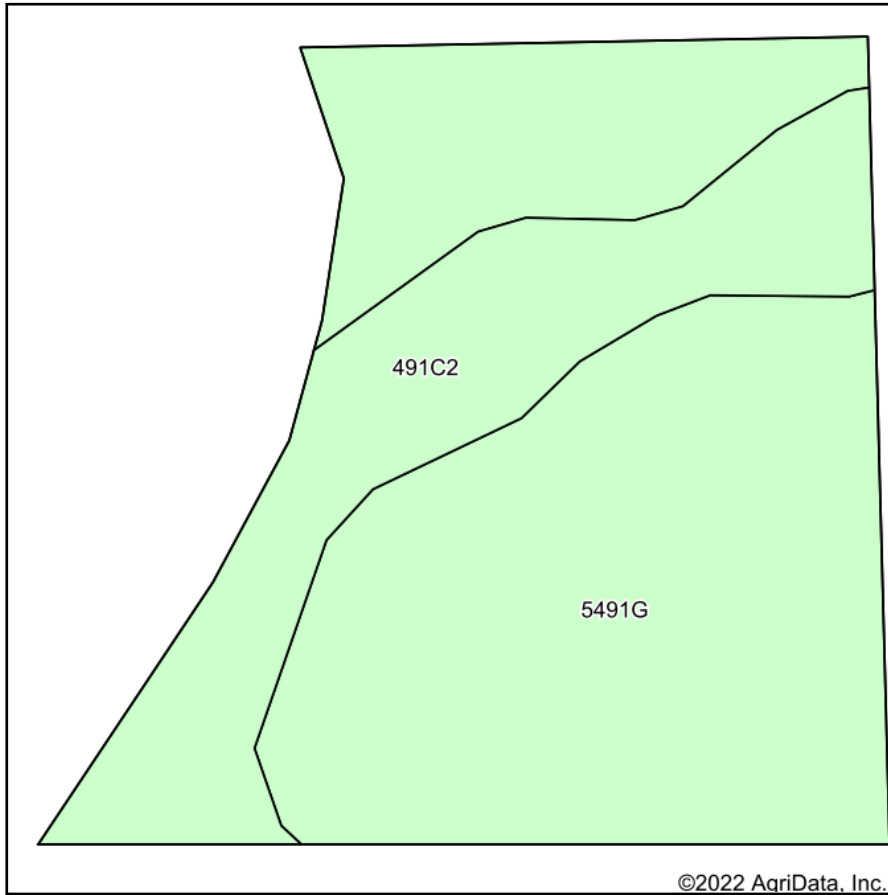


© AgriData, Inc. 2021

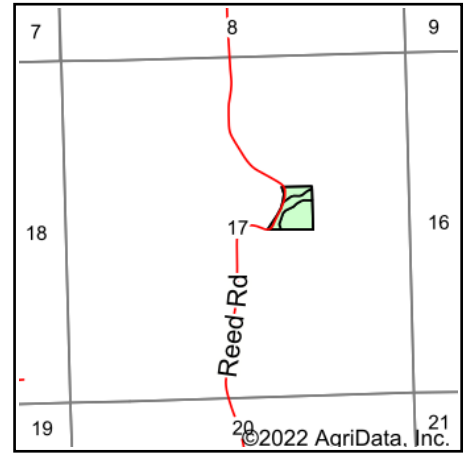
www.AgriDataInc.com

Field borders provided by Farm Service Agency as of 5/21/2008.

Soils Map



Soils data provided by USDA and NRCS.



State: **Illinois**
 County: **Monroe**
 Location: **17-4S-9W**
 Township: **Precinct 9**
 Acres: **8**
 Date: **2/23/2022**



Maps Provided By:



Area Symbol: IL133, Soil Area Version: 14

Code	Soil Description	Acres	Percent of field	Corn Bu/A	Soybeans Bu/A	Wheat Bu/A	Grass-legume e hay, T/A	Crop productivity index for optimum management
5491G	Ruma silt loam, karst, 25 to 60 percent slopes	5.75	71.9%	162	48	60	0.00	116
**491C2	Ruma silt loam, 5 to 10 percent slopes, eroded	2.25	28.1%	**151	**45	**56	0.00	**108
Weighted Average				158.9	47.2	58.9	0.00	113.8

Table: Optimum Crop Productivity Ratings for Illinois Soil by K.R. Olson and J.M. Lang, Office of Research, ACES, University of Illinois at Champaign-Urbana. Version: 1/2/2012 Amended Table S2 B811

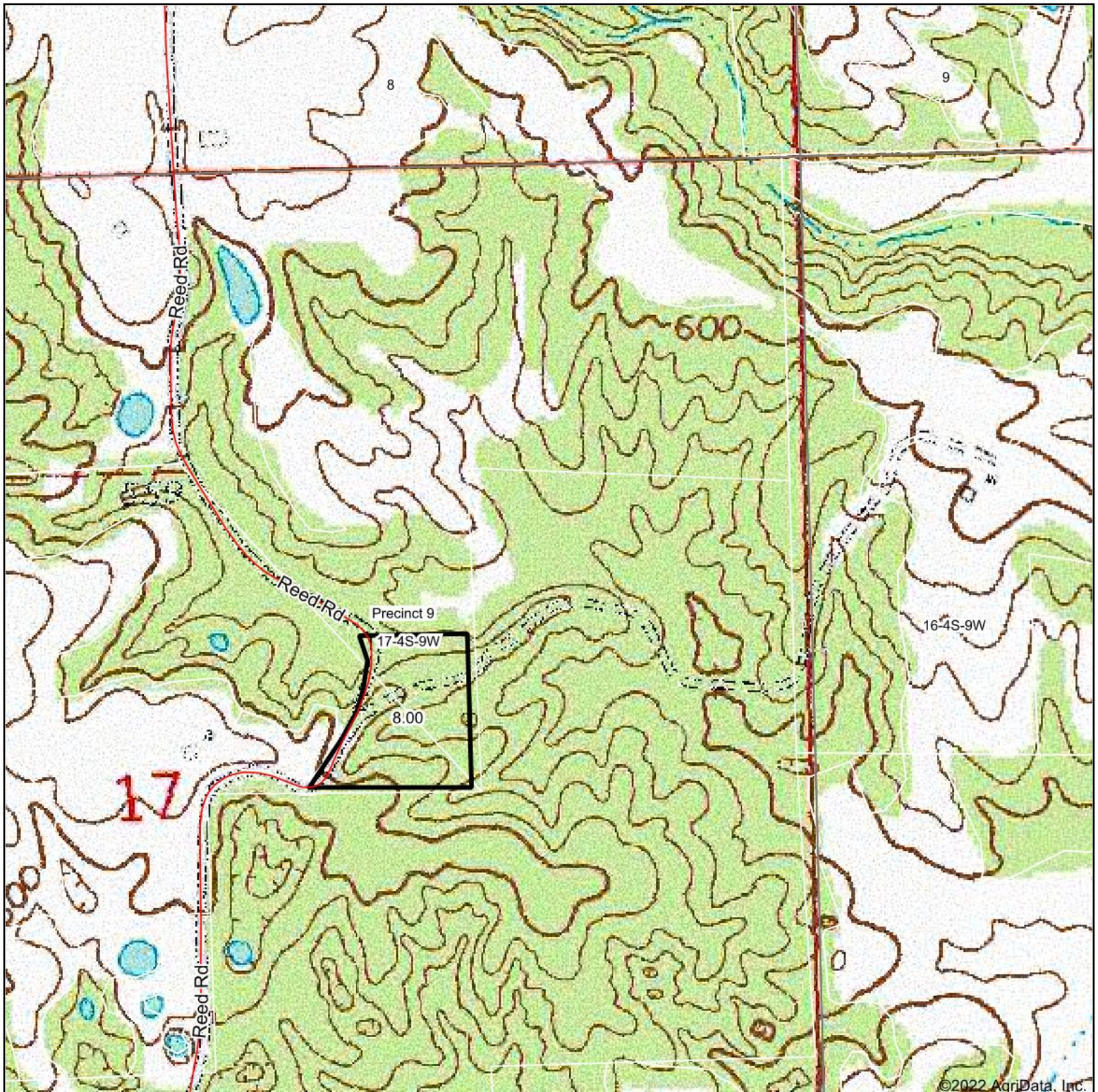
Crop yields and productivity indices for optimum management (B811) are maintained at the following NRES web site: <http://soilproductivity.nres.illinois.edu/>

** Indexes adjusted for slope and erosion according to Bulletin 811 Table S3

e Soils in the well drained group were not rated for grass-legume and are shown with a zero "0".

Soils data provided by USDA and NRCS. Soils data provided by University of Illinois at Champaign-Urbana.

Topography Map



map center: 38° 11' 23.16, -90° 6' 49.21

0ft 675ft 1351ft

17-4S-9W
Monroe County
Illinois



2/23/2022



Maps Provided By:



© AgriData, Inc. 2021

www.AgriDataInc.com

Field borders provided by Farm Service Agency as of 5/21/2008.