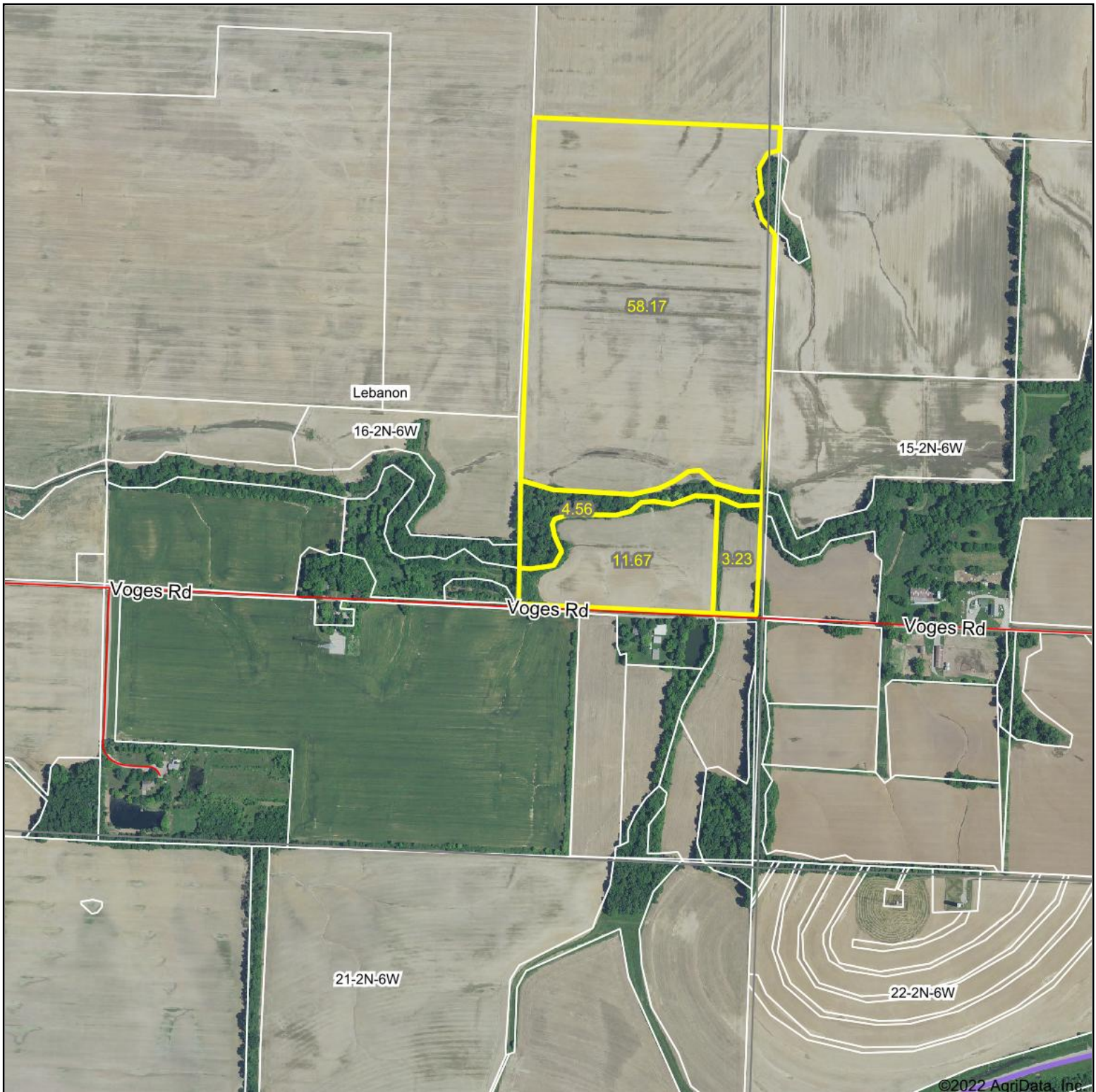
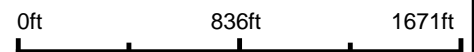


Aerial Map



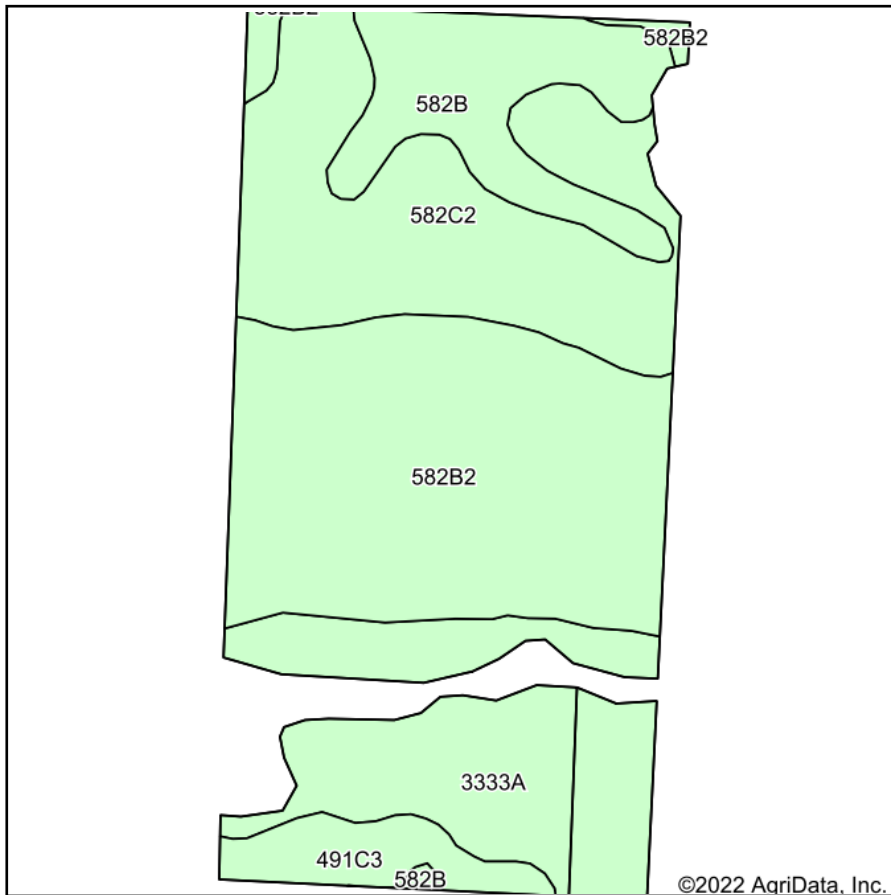
Map Center: 38° 36' 59.07, -89° 45' 55.11



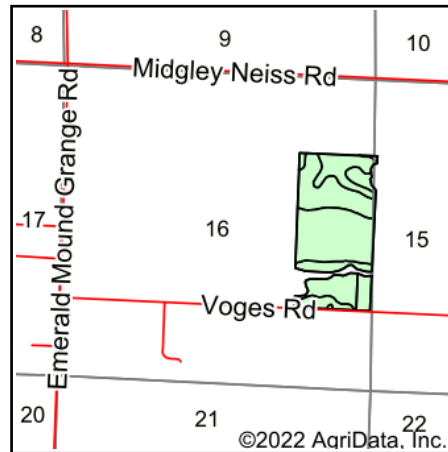
16-2N-6W
St Clair County
Illinois



Soils Map



Soils data provided by USDA and NRCS.



State: **Illinois**
 County: **St Clair**
 Location: **16-2N-6W**
 Township: **Lebanon**
 Acres: **73.07**
 Date: **2/21/2022**



Maps Provided By:



© AgriData, Inc. 2021

www.AgriDataInc.com



Area Symbol: IL163, Soil Area Version: 13

Code	Soil Description	Acres	Percent of field	Corn Bu/A	Soybeans Bu/A	Wheat Bu/A	Grass-legume e hay, T/A	Crop productivity index for optimum management
**582B2	Homen silt loam, 2 to 5 percent slopes, eroded	26.08	35.7%	**143	**45	**53	0.00	**104
**582C2	Homen silt loam, 5 to 10 percent slopes, eroded	18.47	25.3%	**140	**44	**52	0.00	**101
3333A	Wakeland silt loam, 0 to 2 percent slopes, frequently flooded	15.61	21.4%	174	56	68	5.14	128
**582B	Homen silt loam, 2 to 5 percent slopes	9.44	12.9%	**149	**47	**55	0.00	**108
**491C3	Ruma silty clay loam, 5 to 10 percent slopes, severely eroded	3.47	4.7%	**139	**41	**52	0.00	**100
Weighted Average				149.4	47.2	56.2	1.10	108.7

Table: Optimum Crop Productivity Ratings for Illinois Soil by K.R. Olson and J.M. Lang, Office of Research, ACES, University of Illinois at Champaign-Urbana. Version: 1/2/2012 Amended Table S2 B811

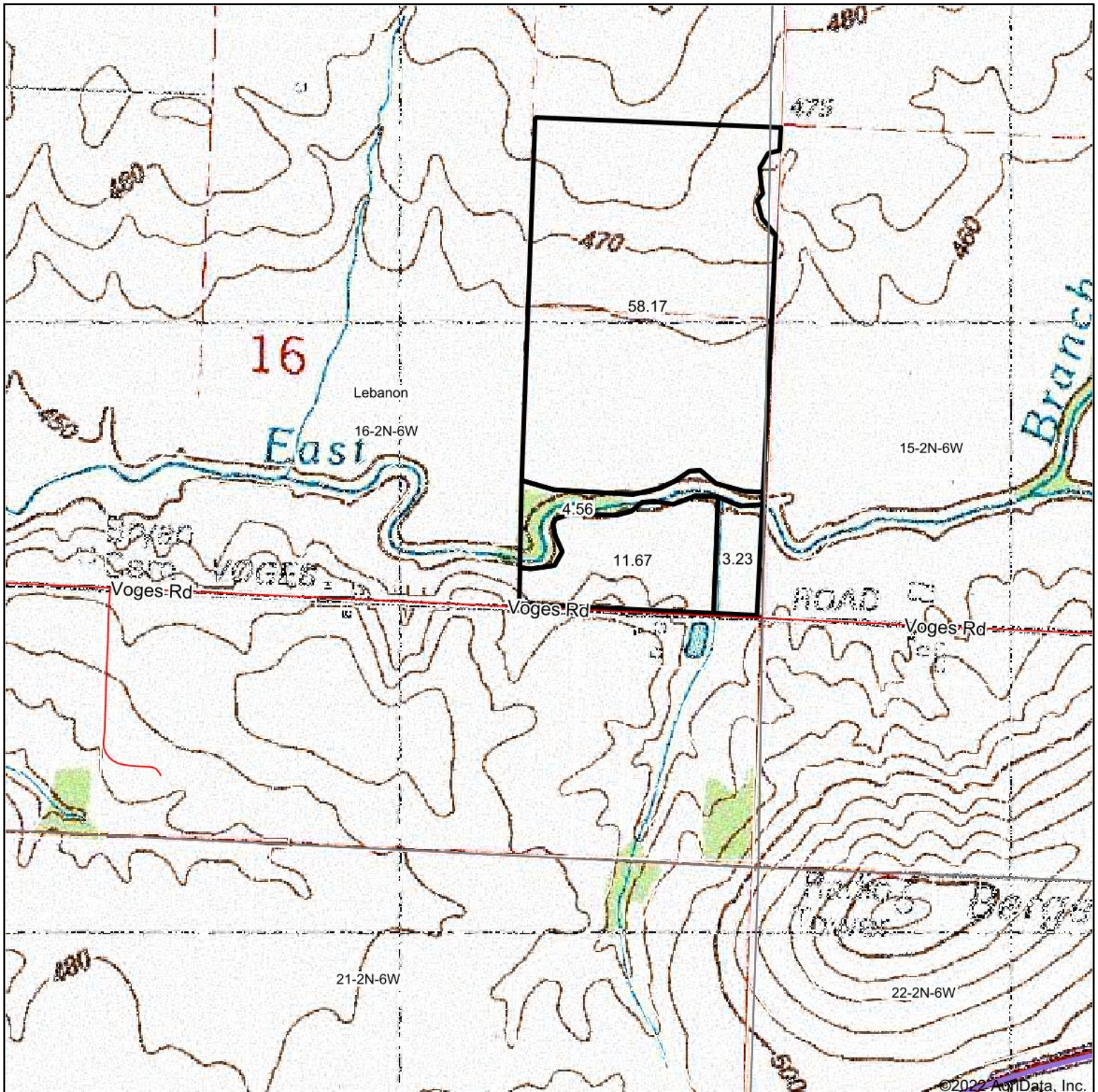
Crop yields and productivity indices for optimum management (B811) are maintained at the following NRES web site: <http://soilproductivity.nres.illinois.edu/>

** Indexes adjusted for slope and erosion according to Bulletin 811 Table S3

e Soils in the well drained group were not rated for grass-legume and are shown with a zero "0".

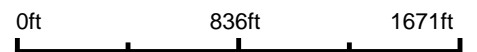
Soils data provided by USDA and NRCS. Soils data provided by University of Illinois at Champaign-Urbana.

Topography Map



©2022 AgriData, Inc.

map center: 38° 36' 59.07, -89° 45' 55.11



16-2N-6W
St Clair County
Illinois



2/21/2022



Maps Provided By:



© AgriData, Inc. 2021

www.AgrIDataInc.com