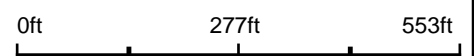


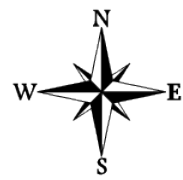
Aerial Map



Map Center: 38° 31' 14.23, -88° 15' 36.05



13-1N-8E
Wayne County
Illinois

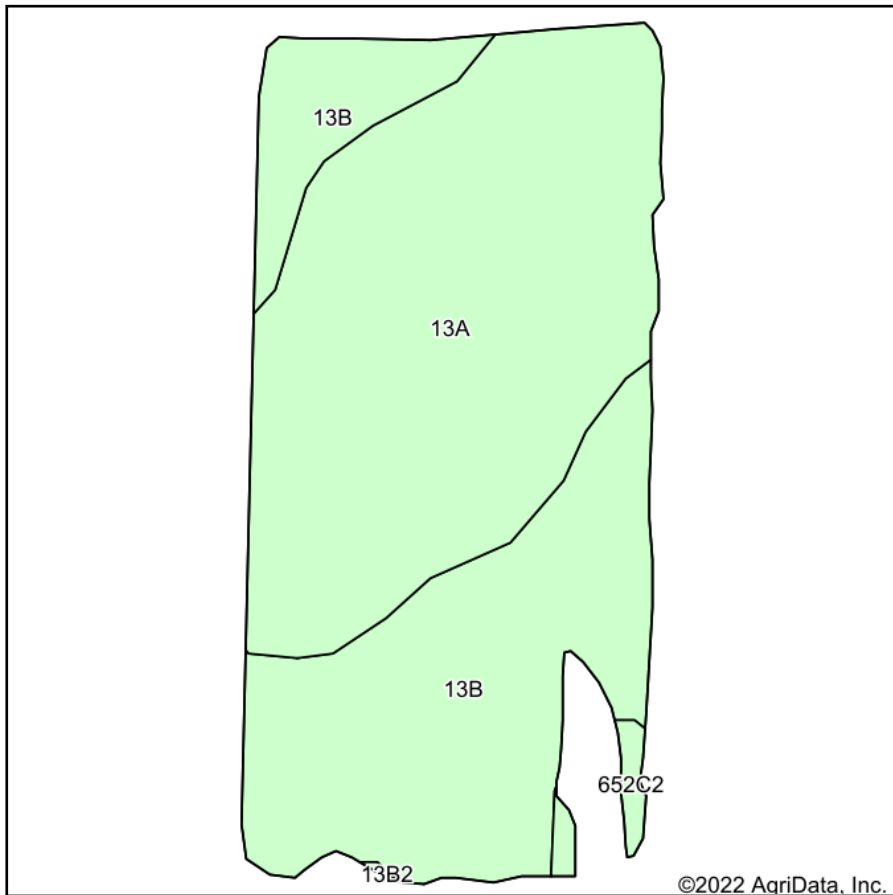


1/31/2022

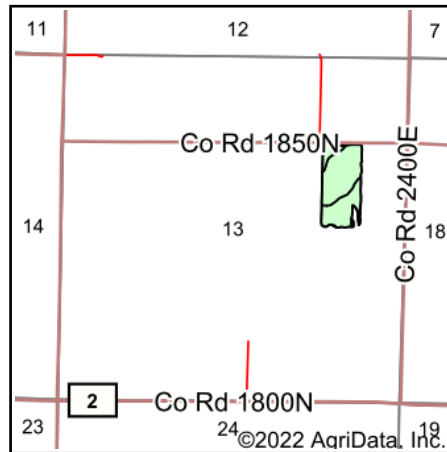
Maps Provided By:
 surety
CUSTOMIZED ONLINE MAPPING
© AgriData, Inc. 2021 www.AgriDataInc.com

Field borders provided by Farm Service Agency as of 5/21/2008.

Soils Map



Soils data provided by USDA and NRCS.



State: **Illinois**
 County: **Wayne**
 Location: **13-1N-8E**
 Township: **Elm River**
 Acres: **16.36**
 Date: **2/15/2022**



Maps Provided By:

 © AgriData, Inc. 2021 www.AgriDataInc.com



Area Symbol: IL191, Soil Area Version: 19

Code	Soil Description	Acres	Percent of field	Corn Bu/A	Soybeans Bu/A	Wheat Bu/A	Crop productivity index for optimum management
13A	Bluford silt loam, 0 to 2 percent slopes	9.28	56.7%	136	44	55	101
**13B	Bluford silt loam, 2 to 5 percent slopes	6.86	41.9%	**135	**44	**54	**100
**652C2	Passport silt loam, 5 to 10 percent slopes, eroded	0.22	1.3%	**116	**39	**51	**88
Weighted Average				135.3	43.9	54.5	100.4

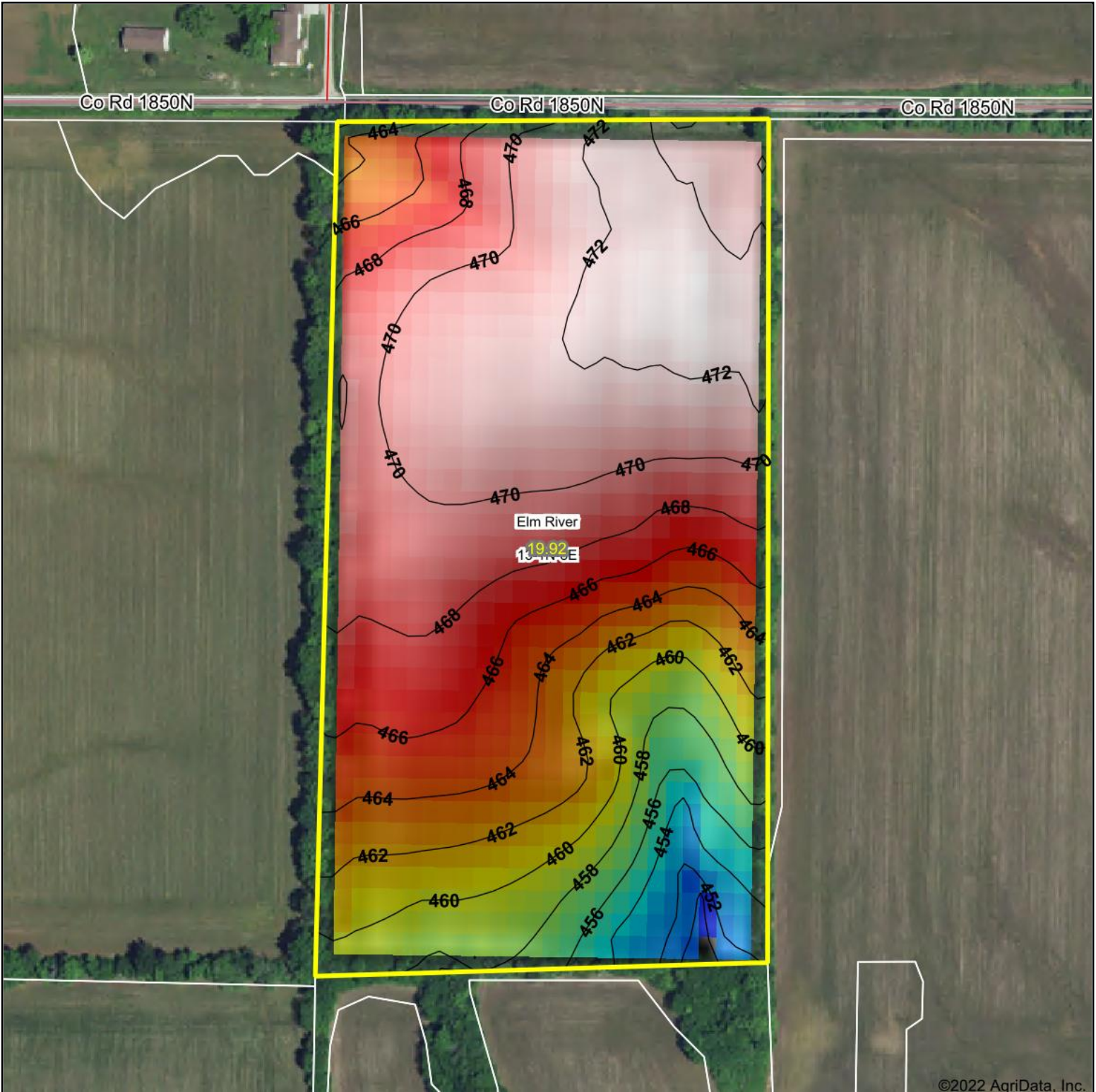
Table: Optimum Crop Productivity Ratings for Illinois Soil by K.R. Olson and J.M. Lang, Office of Research, ACES, University of Illinois at Champaign-Urbana. Version: 1/2/2012 Amended Table S2 B811

Crop yields and productivity indices for optimum management (B811) are maintained at the following NRES web site: <http://soilproductivity.nres.illinois.edu/>

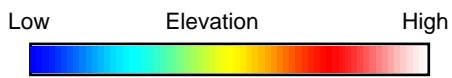
** Indexes adjusted for slope and erosion according to Bulletin 811 Table S3

Soils data provided by USDA and NRCS. Soils data provided by University of Illinois at Champaign-Urbana.

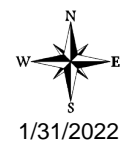
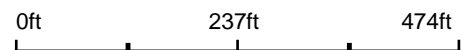
Topography Hillshade



©2022 AgriData, Inc.



Source: USGS 10 meter dem
 Interval(ft): 2
 Min: 448.8
 Max: 472.8
 Range: 24.0
 Average: 466.3
 Standard Deviation: 5.38 ft



13-1N-8E
Wayne County
Illinois

map center: 38° 31' 14.23, -88° 15' 36.05



Maps Provided By:



© AgriData, Inc. 2021 www.AgriDataInc.com

Field borders provided by Farm Service Agency as of 5/21/2008.