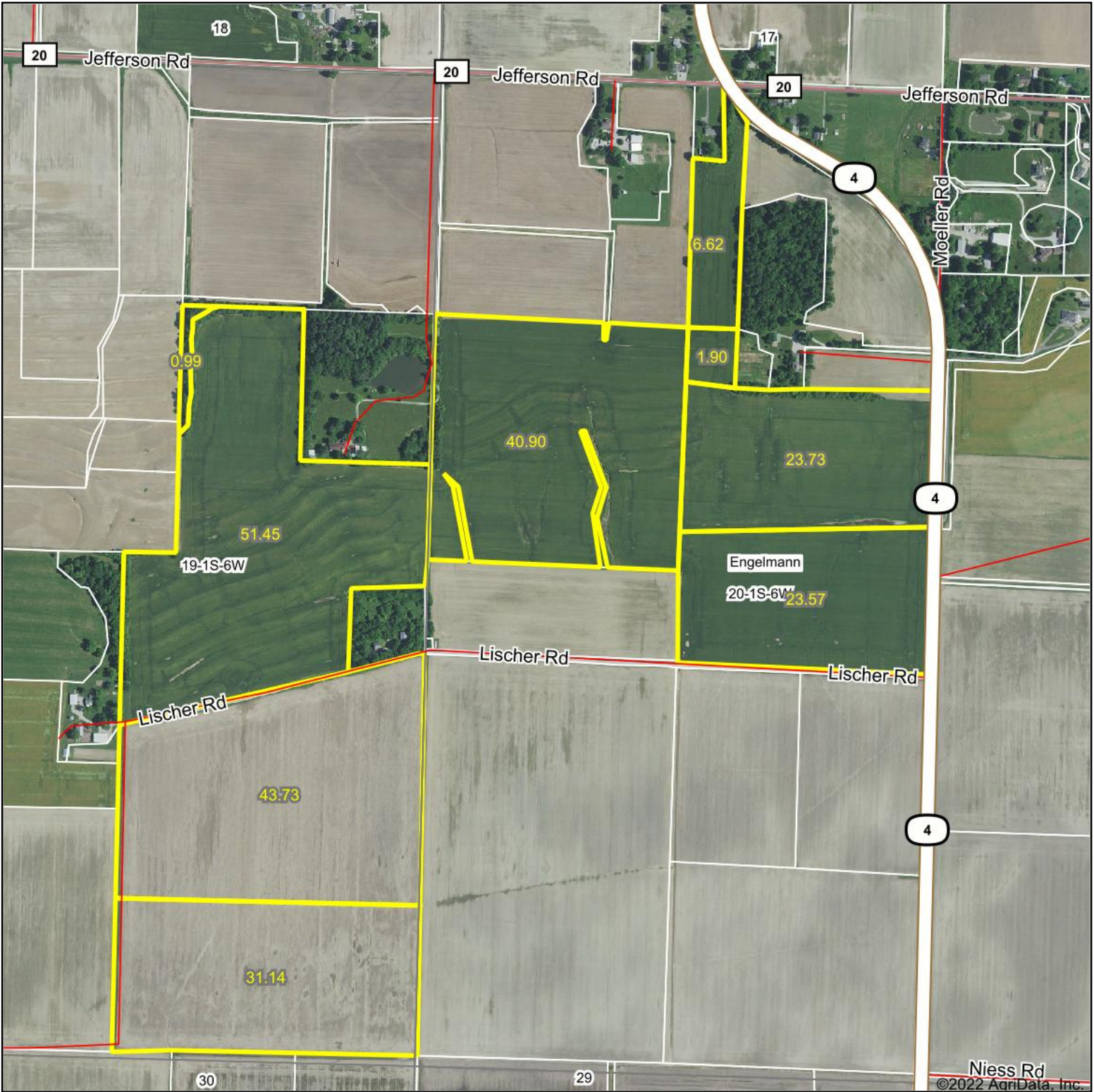
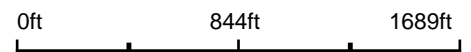


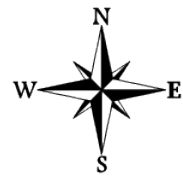
Aerial Map



Map Center: 38° 25' 53.6, -89° 47' 48.7



20-1S-6W
St Clair County
Illinois



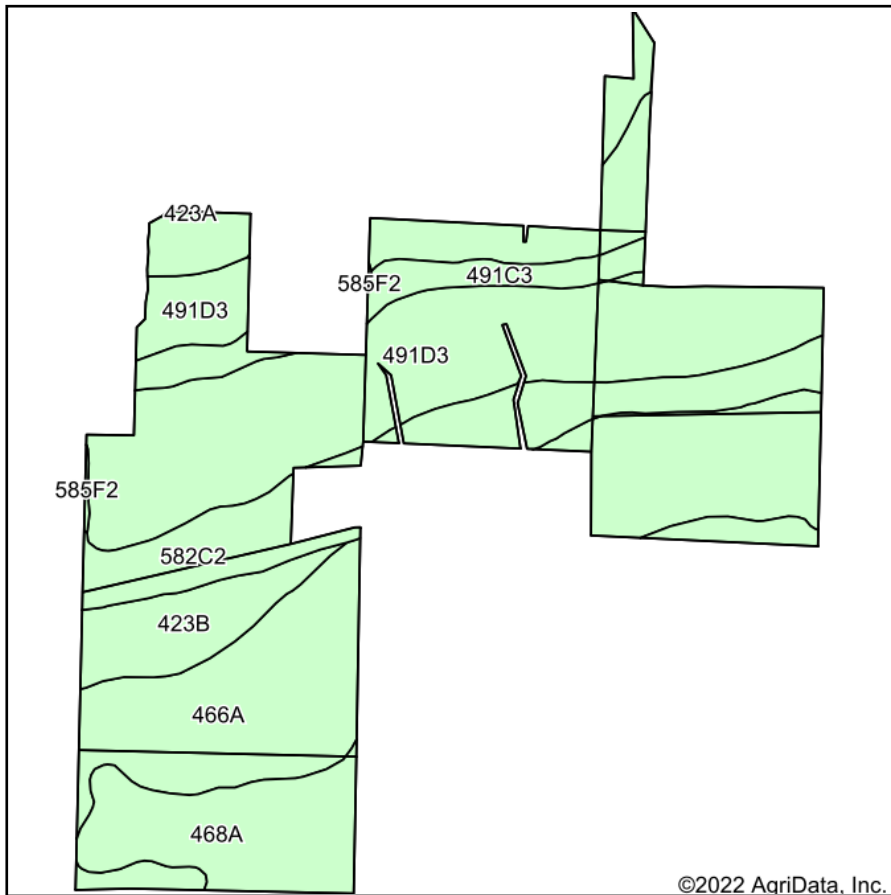
1/26/2022



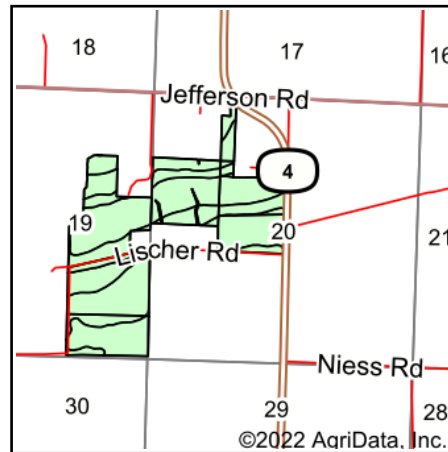
© AgriData, Inc. 2021 www.AgriDataInc.com

Field borders provided by Farm Service Agency as of 5/21/2008.

Soils Map



Soils data provided by USDA and NRCS.



State: **Illinois**
 County: **St Clair**
 Location: **20-1S-6W**
 Township: **Engelmann**
 Acres: **223.04**
 Date: **1/26/2022**



Area Symbol: IL163, Soil Area Version: 13

Code	Soil Description	Acres	Percent of field	Corn Bu/A	Soybeans Bu/A	Wheat Bu/A	Crop productivity index for optimum management
**491D3	Ruma silty clay loam, 10 to 18 percent slopes, severely eroded	81.80	36.7%	**131	**39	**49	**94
466A	Bartelso silt loam, 0 to 2 percent slopes	58.72	26.3%	176	55	64	127
**582C2	Homen silt loam, 5 to 10 percent slopes, eroded	34.66	15.5%	**140	**44	**52	**101
468A	Lakaskia silt loam, 0 to 2 percent slopes	25.26	11.3%	168	52	61	121
**423B	Millstadt silt loam, 2 to 5 percent slopes	12.45	5.6%	**153	**46	**54	**109
**491C3	Ruma silty clay loam, 5 to 10 percent slopes, severely eroded	9.87	4.4%	**139	**41	**52	**100
**585F2	Negley loam, 18 to 35 percent slopes, eroded	0.28	0.1%	**90	**29	**34	**67
Weighted Average				150	45.9	55.2	107.9

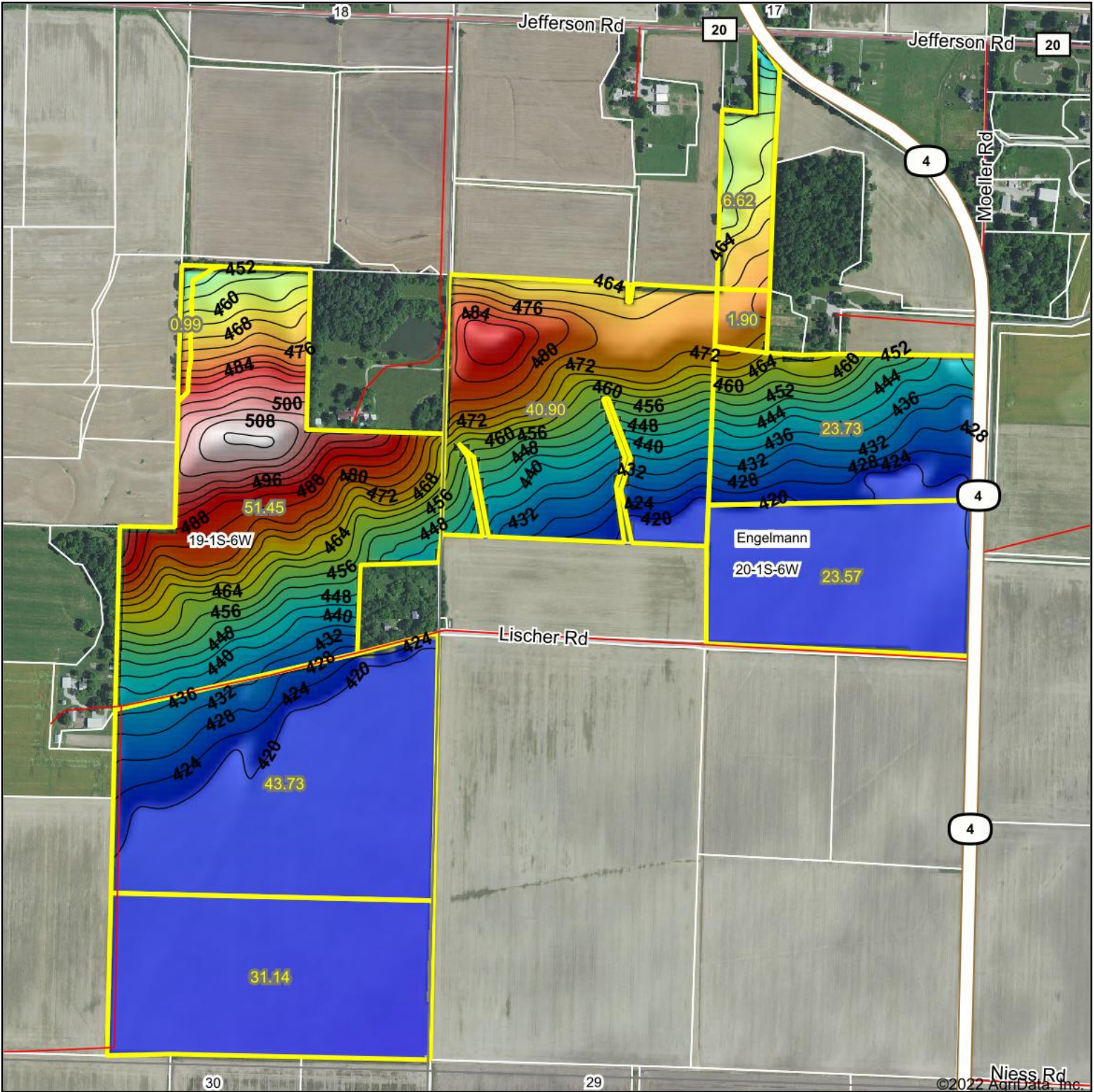
Table: Optimum Crop Productivity Ratings for Illinois Soil by K.R. Olson and J.M. Lang, Office of Research, ACES, University of Illinois at Champaign-Urbana. Version: 1/2/2012 Amended Table S2 B811

Crop yields and productivity indices for optimum management (B811) are maintained at the following NRES web site: <http://soilproductivity.nres.illinois.edu/>

** Indexes adjusted for slope and erosion according to Bulletin 811 Table S3

Soils data provided by USDA and NRCS. Soils data provided by University of Illinois at Champaign-Urbana.

Topography Hillshade



<p>Low Elevation High</p>	<p>Source: USGS 10 meter dem Interval(ft): 4 Min: 416.1 Max: 512.5 Range: 96.4 Average: 441.2 Standard Deviation: 26.25 ft</p>	<p>0ft 797ft 1595ft</p> <p>©2022 AgriData, Inc.</p> <p> 1/26/2022 20-1S-6W St Clair County Illinois map center: 38° 25' 53.6, -89° 47' 48.7 </p>
---------------------------	--	---



Maps Provided By:



© AgriData, Inc. 2021 www.AgriDataInc.com

Field borders provided by Farm Service Agency as of 5/21/2008.