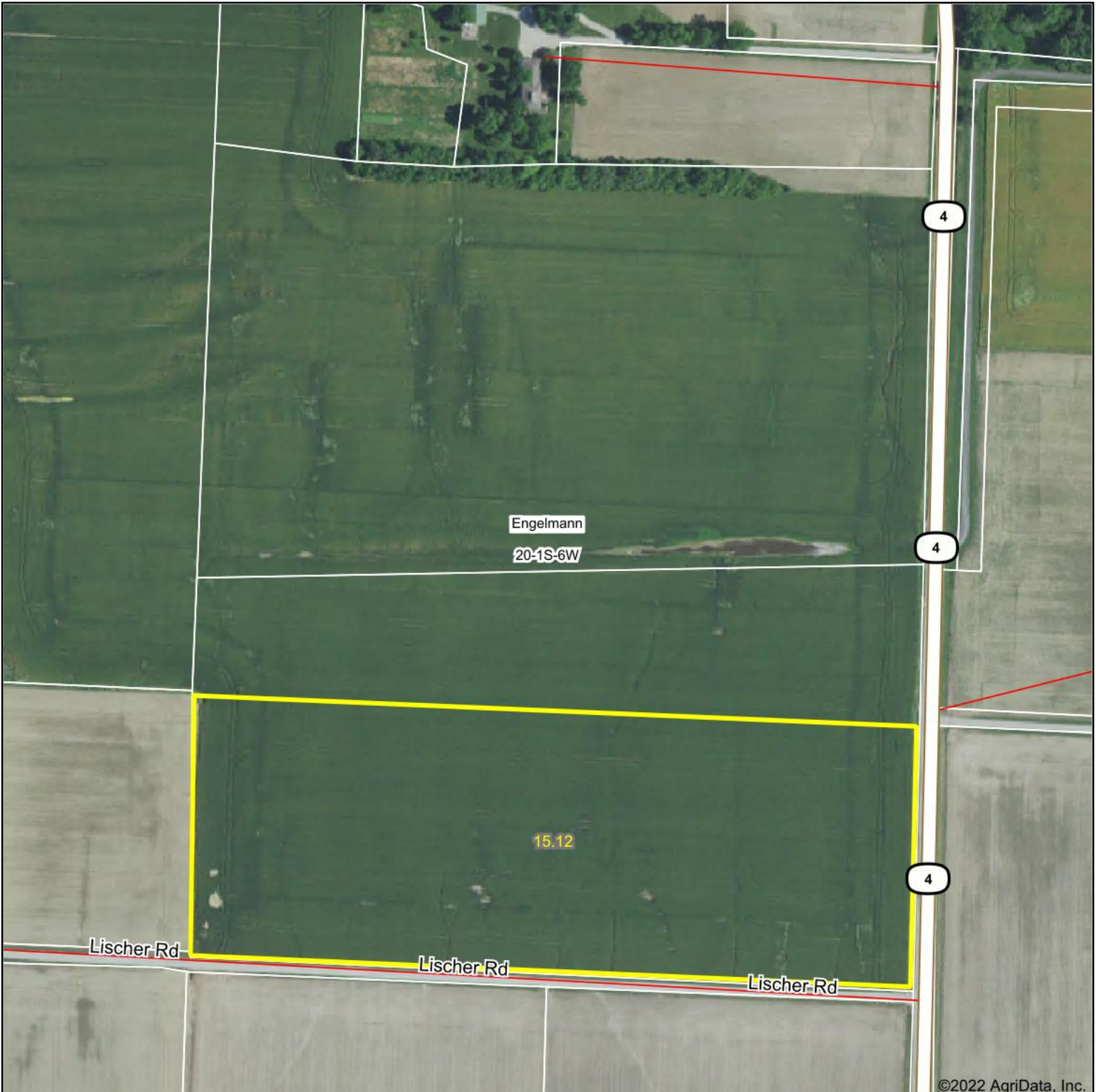
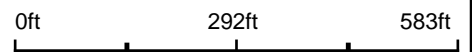


Aerial Map



©2022 AgriData, Inc.

Map Center: 38° 25' 55.39, -89° 47' 31.41



20-1S-6W
St Clair County
Illinois



1/27/2022



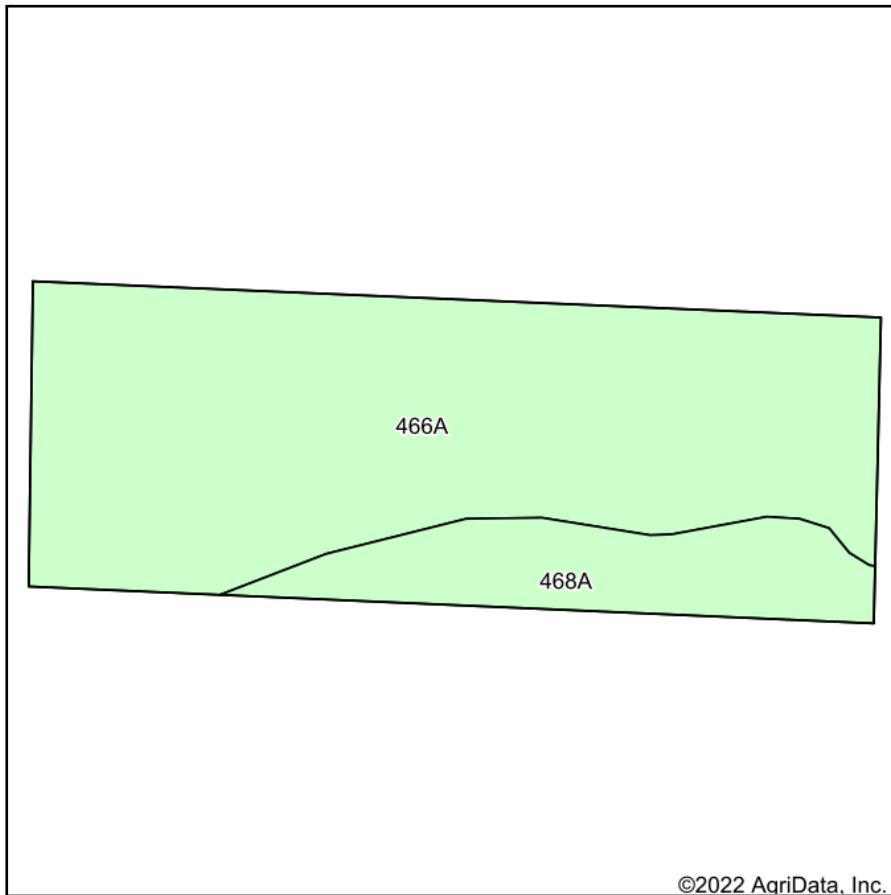
Maps Provided By:



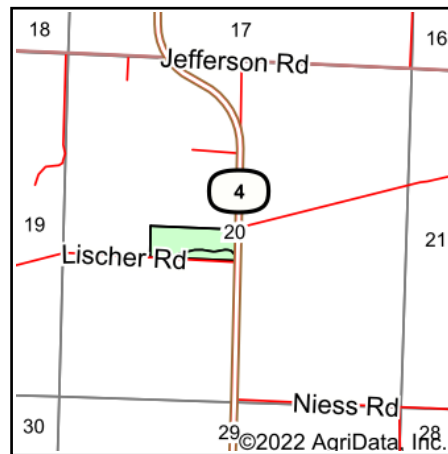
© AgriData, Inc. 2021 www.AgriDataInc.com

Field borders provided by Farm Service Agency as of 5/21/2008.

Soils Map



Soils data provided by USDA and NRCS.



State: **Illinois**
 County: **St Clair**
 Location: **20-1S-6W**
 Township: **Engelmann**
 Acres: **15.12**
 Date: **1/27/2022**



Maps Provided By:



© AgriData, Inc. 2021

www.AgriDataInc.com



Area Symbol: IL163, Soil Area Version: 13

Code	Soil Description	Acres	Percent of field	Corn Bu/A	Soybeans Bu/A	Wheat Bu/A	Crop productivity index for optimum management
466A	Bartelso silt loam, 0 to 2 percent slopes	12.35	81.7%	176	55	64	127
468A	Lakaskia silt loam, 0 to 2 percent slopes	2.77	18.3%	168	52	61	121
Weighted Average				174.5	54.5	63.5	125.9

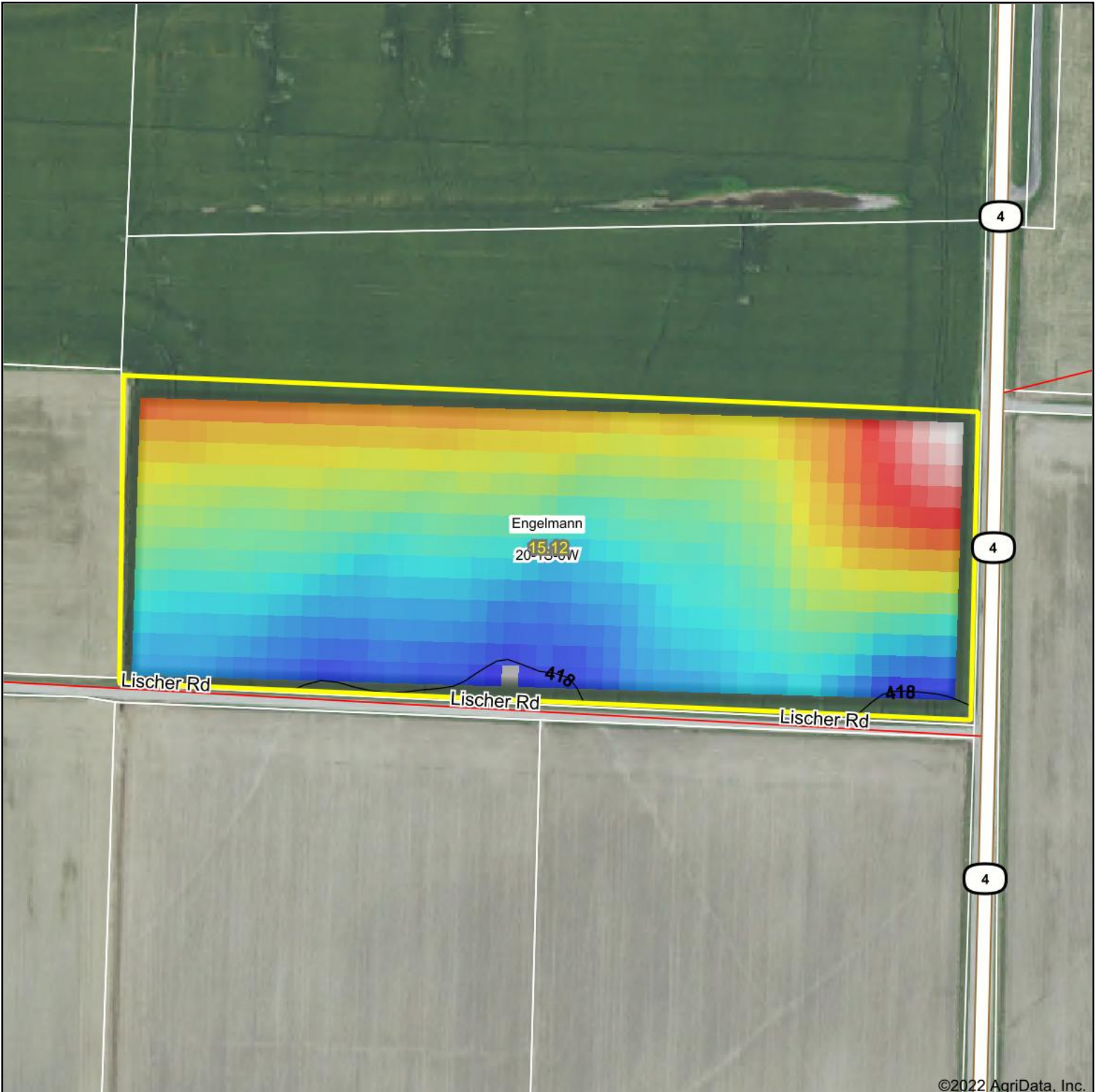
Table: Optimum Crop Productivity Ratings for Illinois Soil by K.R. Olson and J.M. Lang, Office of Research, ACES, University of Illinois at Champaign-Urbana. Version: 1/2/2012 Amended Table S2 B811

Crop yields and productivity indices for optimum management (B811) are maintained at the following NRES web site: <http://soilproductivity.nres.illinois.edu/>

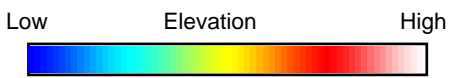
** Indexes adjusted for slope and erosion according to Bulletin 811 Table S3

Soils data provided by USDA and NRCS. Soils data provided by University of Illinois at Champaign-Urbana.

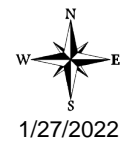
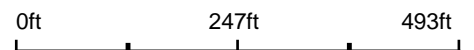
Topography Hillshade



©2022 AgriData, Inc.



Source: USGS 10 meter dem
 Interval(ft): 2
 Min: 418.0
 Max: 419.5
 Range: 1.5
 Average: 418.5
 Standard Deviation: 0.3 ft



1/27/2022

20-1S-6W
St Clair County
Illinois

map center: 38° 25' 55.39, -89° 47' 31.41



Maps Provided By:



© AgriData, Inc. 2021 www.AgriDataInc.com

Field borders provided by Farm Service Agency as of 5/21/2008.