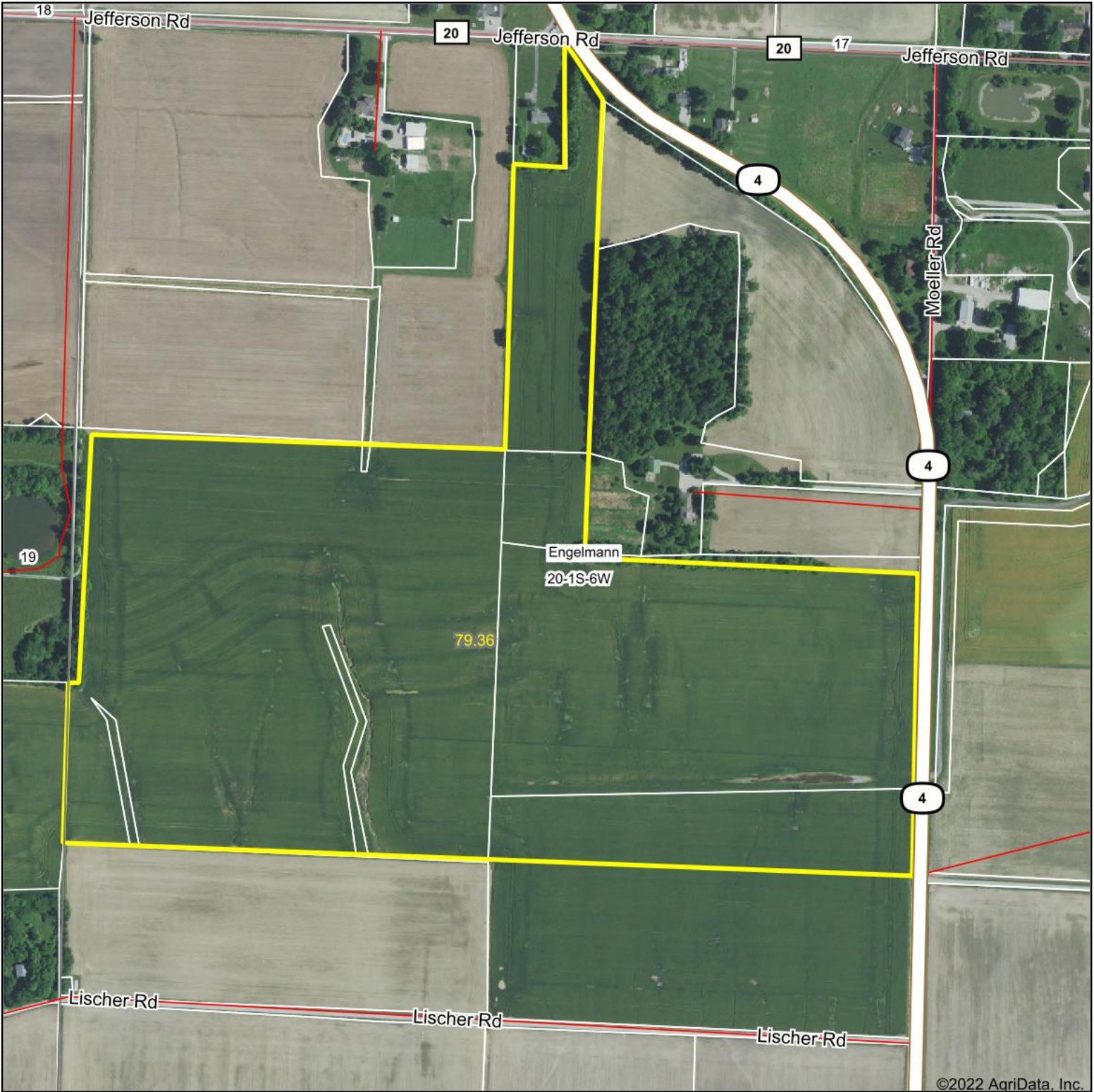
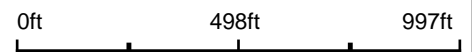


Aerial Map



Map Center: 38° 26' 2.59, -89° 47' 37.7



20-1S-6W
St Clair County
Illinois



1/27/2022



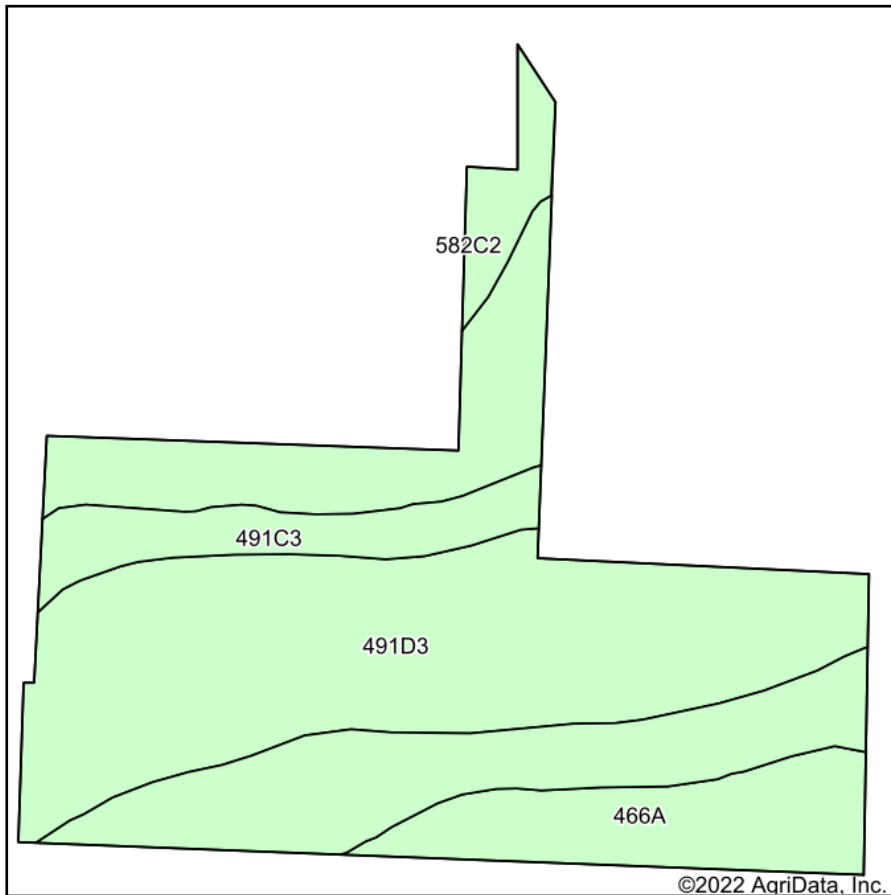
Maps Provided By:



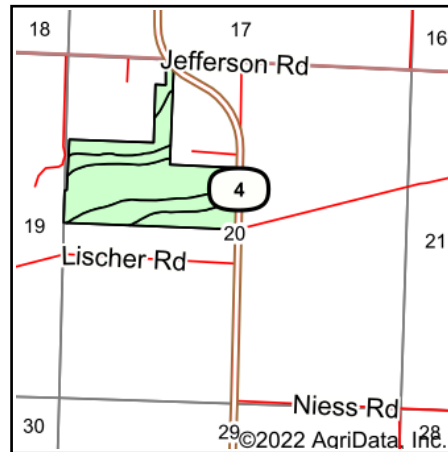
© AgriData, Inc. 2021 www.AgriDataInc.com

Field borders provided by Farm Service Agency as of 5/21/2008.

Soils Map



Soils data provided by USDA and NRCS.



State: **Illinois**
 County: **St Clair**
 Location: **20-1S-6W**
 Township: **Engelmann**
 Acres: **79.36**
 Date: **1/27/2022**



Maps Provided By:



© AgriData, Inc. 2021

www.AgriDataInc.com



Area Symbol: IL163, Soil Area Version: 13

Code	Soil Description	Acres	Percent of field	Corn Bu/A	Soybeans Bu/A	Wheat Bu/A	Crop productivity index for optimum management
**491D3	Ruma silty clay loam, 10 to 18 percent slopes, severely eroded	45.94	57.9%	**131	**39	**49	**94
**582C2	Homen silt loam, 5 to 10 percent slopes, eroded	17.47	22.0%	**140	**44	**52	**101
466A	Bartelso silt loam, 0 to 2 percent slopes	9.61	12.1%	176	55	64	127
**491C3	Ruma silty clay loam, 5 to 10 percent slopes, severely eroded	6.34	8.0%	**139	**41	**52	**100
Weighted Average				139.1	42.2	51.7	100

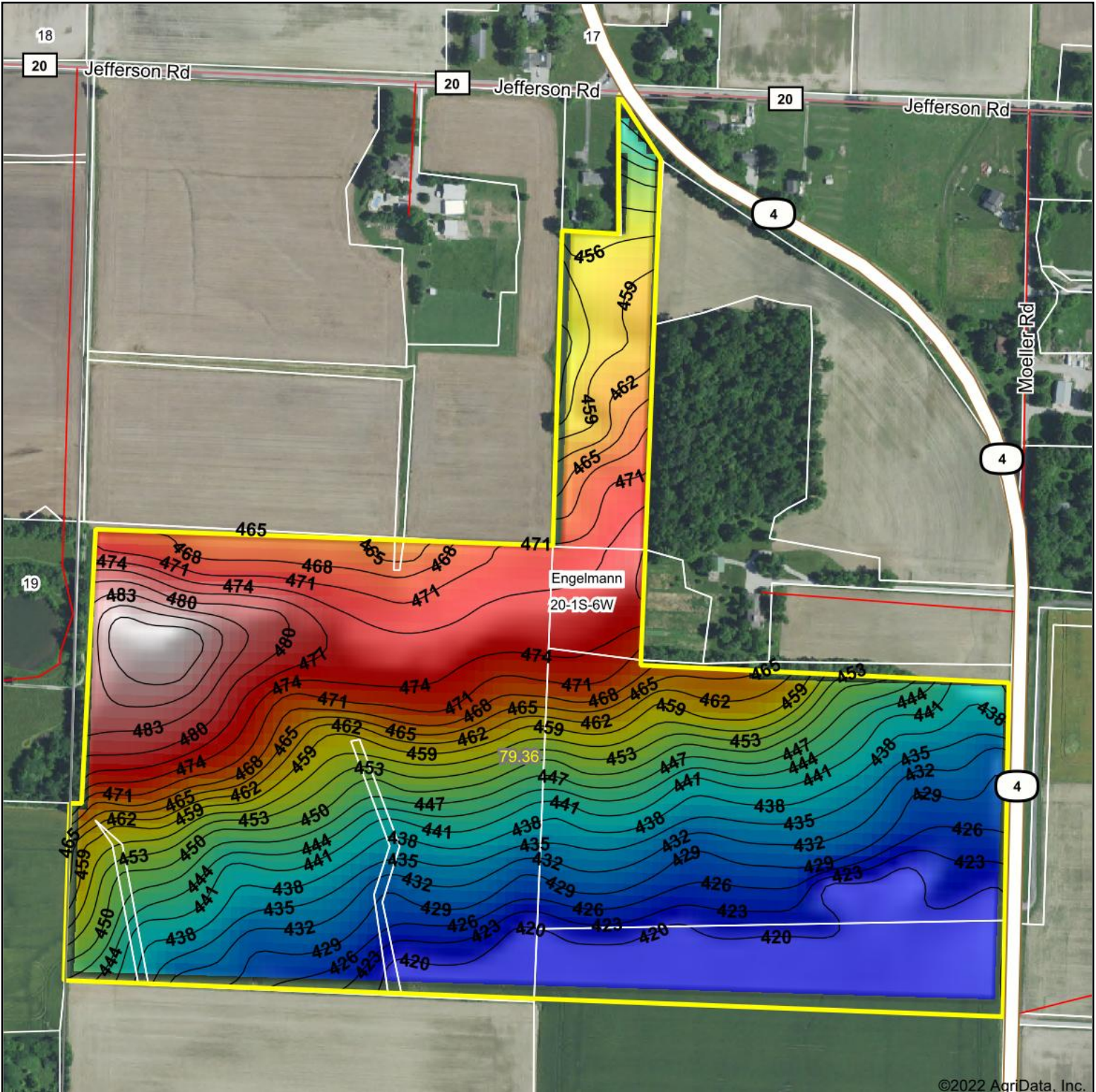
Table: Optimum Crop Productivity Ratings for Illinois Soil by K.R. Olson and J.M. Lang, Office of Research, ACES, University of Illinois at Champaign-Urbana. Version: 1/2/2012 Amended Table S2 B811

Crop yields and productivity indices for optimum management (B811) are maintained at the following NRES web site: <http://soilproductivity.nres.illinois.edu/>

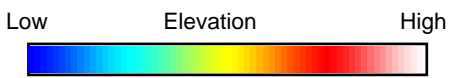
** Indexes adjusted for slope and erosion according to Bulletin 811 Table S3

Soils data provided by USDA and NRCS. Soils data provided by University of Illinois at Champaign-Urbana.

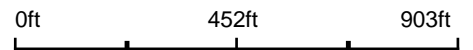
Topography Hillshade



©2022 AgriData, Inc.



Source: USGS 10 meter dem



Interval(ft): 3

Min: 419.0

Max: 491.6

Range: 72.6

Average: 448.6

Standard Deviation: 21.13 ft



1/27/2022

20-1S-6W
St Clair County
Illinois

map center: 38° 26' 2.59", -89° 47' 37.7"



Maps Provided By:



© AgriData, Inc. 2021 www.AgriDataInc.com

Field borders provided by Farm Service Agency as of 5/21/2008.