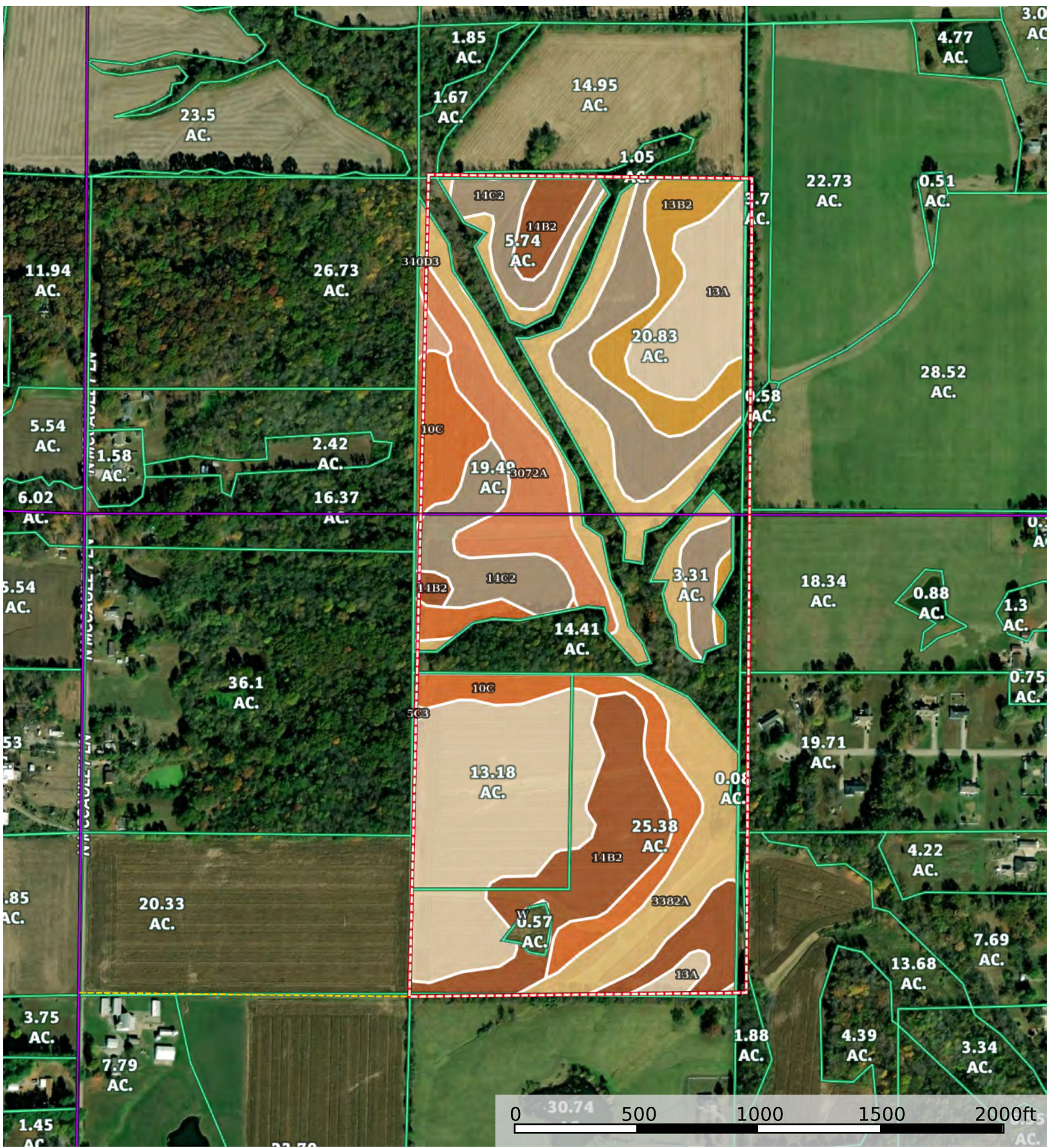



Sample

Jefferson County, Jefferson County, Illinois, 102.85 AC +/-



--- Road / Trail Boundary

|  87.87 ac

SOIL CODE	SOIL DESCRIPTION	ACRES	%	PI	NCCPI	CAP
13A	Bluford silt loam, 0 to 2 percent slopes	21.68	24.67	101	65	2w
3382A	Belknap silt loam, 0 to 2 percent slopes, frequently flooded	17.03	19.38	117	67	3w
14C2	Ava silt loam, 5 to 10 percent slopes, eroded	14.87	16.92	90	50	3e
14B2	Ava silt loam, 2 to 5 percent slopes, eroded	12.84	14.61	93	50	3s
10C	Plumfield silty clay loam, 5 to 10 percent slopes	9.34	10.63	78	23	4e
3072A	Sharon silt loam, 0 to 2 percent slopes, frequently flooded	6.73	7.66	122	79	3w
13B2	Bluford silt loam, 2 to 5 percent slopes, eroded	4.81	5.47	96	49	2e
340D3	Zanesville silt loam, till plain, 10 to 18 percent slopes, severely eroded	0.49	0.56	65	39	6e
5C3	Blair silty clay loam, 5 to 10 percent slopes, severely eroded	0.05	0.06	77	74	4e
W	Water	0.03	0.03	0	-	8w
TOTALS		87.89(*)	100%	99.69	56.21	2.82









(*) Total acres may differ in the second decimal compared to the sum of each acreage soil. This is due to a round error because we only show the acres of each soil with two decimal.

Capability Legend

Increased Limitations and Hazards

Decreased Adaptability and Freedom of Choice Users

Land, Capability

								
	1	2	3	4	5	6	7	8
'Wild Life'	•	•	•	•	•	•	•	•
Forestry	•	•	•	•	•	•	•	
Limited	•	•	•	•	•	•	•	
Moderate	•	•	•	•	•	•		
Intense	•	•	•	•	•			
Limited	•	•	•	•				
Moderate	•	•	•					
Intense	•	•						
Very Intense	•							

Grazing Cultivation

(c) climatic limitations (e) susceptibility to erosion

(s) soil limitations within the rooting zone (w) excess of water