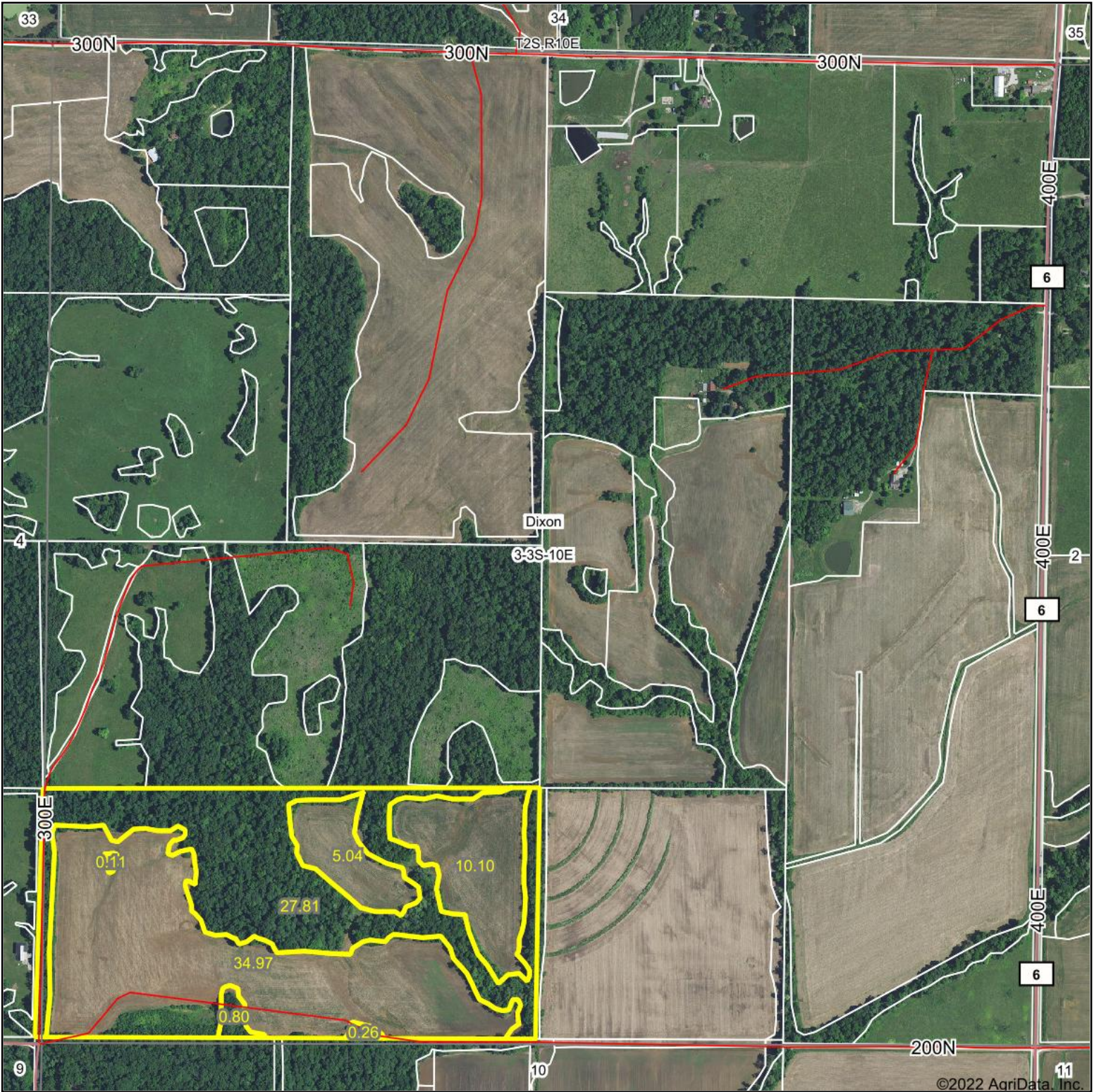


Aerial Map

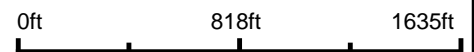


©2022 AgriData, Inc.



Brett Berger, ARA

Map Center: 38.291893, -88.085675



3-3S-10E
Edwards County
Illinois

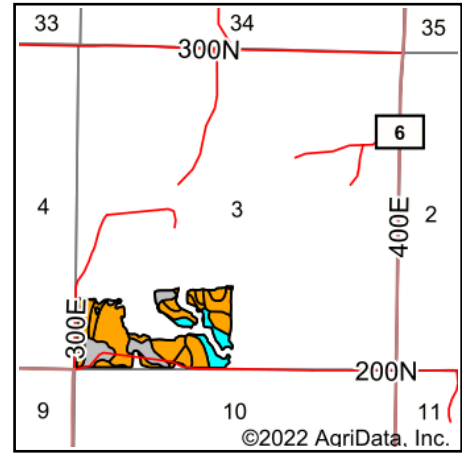
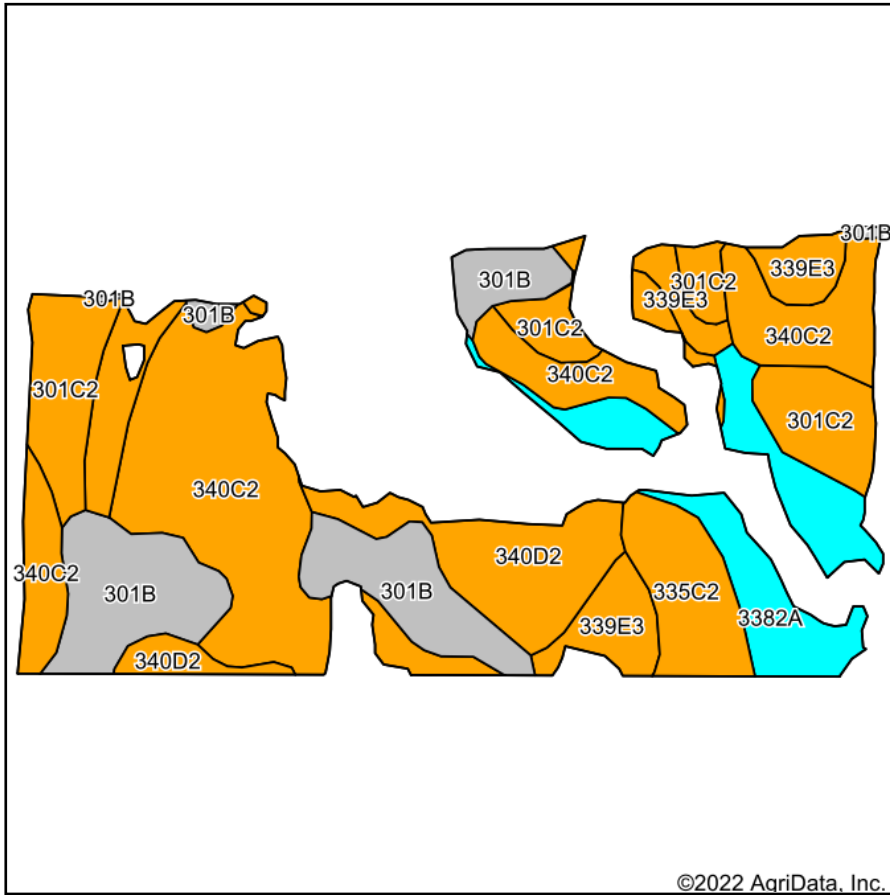


1/24/2022

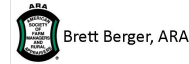
Maps Provided By:
**surety**[®]
CUSTOMIZED ONLINE MAPPING
© AgriData, Inc. 2021 www.AgriDataInc.com

Field borders provided by Farm Service Agency as of 5/21/2008.

Soils Map



State: **Illinois**
 County: **Edwards**
 Location: **3-3S-10E**
 Township: **Dixon**
 Acres: **50.11**
 Date: **1/24/2022**



Soils data provided by USDA and NRCS.

Area Symbol: IL047, Soil Area Version: 13

Code	Soil Description	Acres	Percent of field	Il. State Productivity Index Legend	Subsoil rooting a	Corn Bu/A	Soybeans Bu/A	Wheat Bu/A	Oats Bu/A b	Sorghum c Bu/A	Alfalfa d hay, T/A	Grass-leg ume e hay, T/A	Crop productivity index for optimum management
**340C2	Zanesville silt loam, till plain, 5 to 10 percent slopes, eroded	16.47	32.9%		UNF	**112	**39	**48	**55	0	0.00	**3.50	**85
**301B	Grantsburg silt loam, 2 to 4 percent slopes	8.48	16.9%		UNF	**133	**46	**54	0	**103	**3.23	0.00	**101
**340D2	Zanesville silt loam, till plain, 10 to 18 percent slopes, eroded	6.61	13.2%		UNF	**104	**36	**45	**51	0	0.00	**3.27	**79
**301C2	Grantsburg silt loam, 4 to 7 percent slopes, eroded	6.35	12.7%		UNF	**121	**41	**50	0	**94	**2.93	0.00	**92
3382A	Belknap silt loam, 0 to 2 percent slopes, frequently flooded	5.78	11.5%		FAV	156	52	63	75	0	0.00	4.89	117
**339E3	Wellston silty clay loam, 18 to 25 percent slopes, severely eroded	3.41	6.8%		UNF	**67	**23	**27	**31	0	0.00	**2.04	**50
**335C2	Robbs silt loam, 4 to 7 percent slopes, eroded	3.01	6.0%		FAV	**126	**42	**51	0	**100	0.00	**4.08	**97
Weighted Average						118.5	40.6	49.4	35.6	35.3	0.92	2.53	89.8

Maps Provided By:



surety[®]
CUSTOMIZED ONLINE MAPPING

Table: Optimum Crop Productivity Ratings for Illinois Soil by K.R. Olson and J.M. Lang, Office of Research, ACES, University of Illinois at Champaign-Urbana. Version: 1/2/2012 Amended Table S2 B811

Crop yields and productivity indices for optimum management (B811) are maintained at the following NRES web site: <http://soilproductivity.nres.illinois.edu/>

** Indexes adjusted for slope and erosion according to Bulletin 811 Table S3

a UNF = unfavorable; FAV = favorable

b Soils in the southern region were not rated for oats and are shown with a zero "0".

c Soils in the northern region or in both regions were not rated for grain sorghum and are shown with a zero "0".

d Soils in the poorly drained group were not rated for alfalfa and are shown with a zero "0".

e Soils in the well drained group were not rated for grass-legume and are shown with a zero "0".

Soils data provided by USDA and NRCS. Soils data provided by University of Illinois at Champaign-Urbana.

© AgriData, Inc. 2011 www.AgriDataInc.com