

Aerial Map

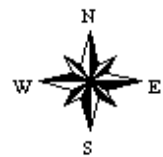


©2021 AgriData, Inc.

Map Center: 37° 48' 53.37, -88° 41' 44.04



19-8S-5E
Saline County
Illinois



4/15/2021



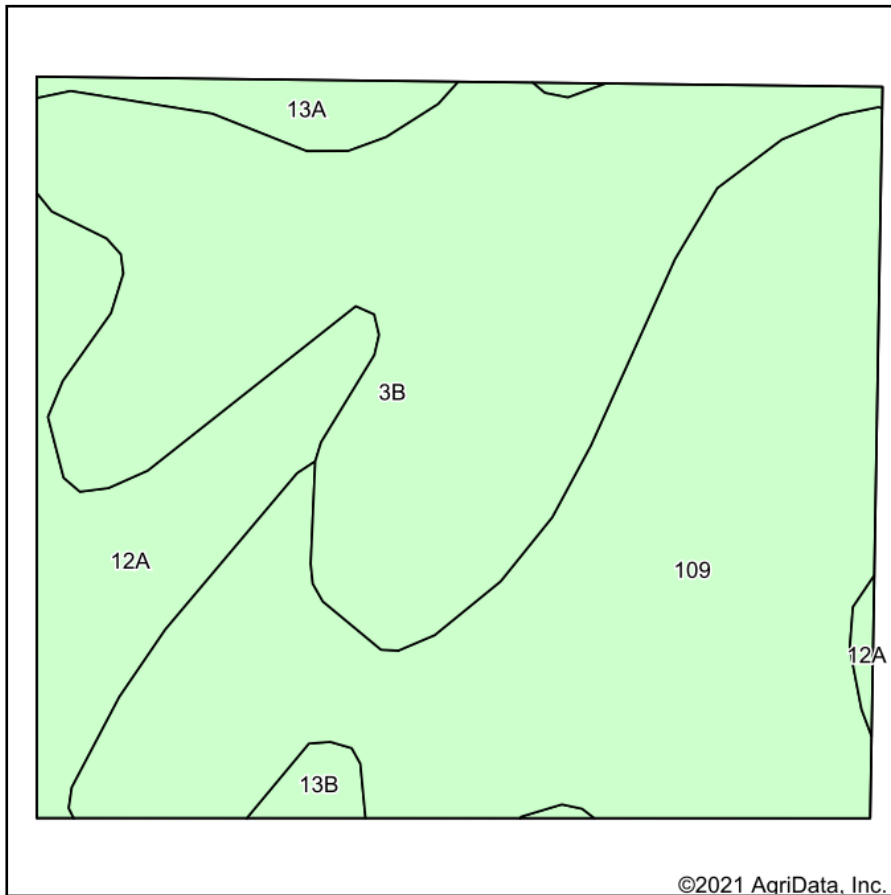
Maps Provided By:



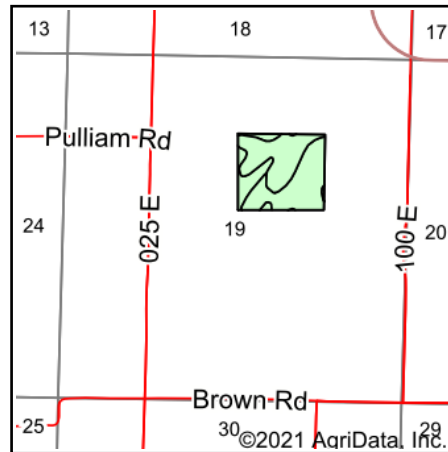
© AgriData, Inc. 2021 www.AgriDataInc.com

Field borders provided by Farm Service Agency as of 5/21/2008.

Soils Map



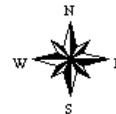
Soils data provided by USDA and NRCS.



State: **Illinois**
 County: **Saline**
 Location: **19-8S-5E**
 Township: **Brushy**
 Acres: **36.63**
 Date: **4/15/2021**



Maps Provided By:



Area Symbol: IL165, Soil Area Version: 15

Code	Soil Description	Acres	Percent of field	Corn Bu/A	Soybeans Bu/A	Wheat Bu/A	Grass-legume e hay, T/A	Crop productivity index for optimum management
109	Raccoon silt loam	16.47	45.0%	144	46	56	0.00	106
**3B	Hoyleton silt loam, 1 to 4 percent slopes	14.32	39.1%	**145	**46	**57	**4.59	**107
12A	Wynoose silt loam, 0 to 2 percent slopes	4.41	12.0%	128	42	51	4.26	97
13A	Bluford silt loam, 0 to 2 percent slopes	1.03	2.8%	136	44	55	3.39	101
**13B	Bluford silt loam, 2 to 5 percent slopes	0.40	1.1%	**135	**44	**54	**3.36	**100
Weighted Average				142.1	45.4	55.7	2.44	105.1

Table: Optimum Crop Productivity Ratings for Illinois Soil by K.R. Olson and J.M. Lang, Office of Research, ACES, University of Illinois at Champaign-Urbana. Version: 1/2/2012 Amended Table S2 B811

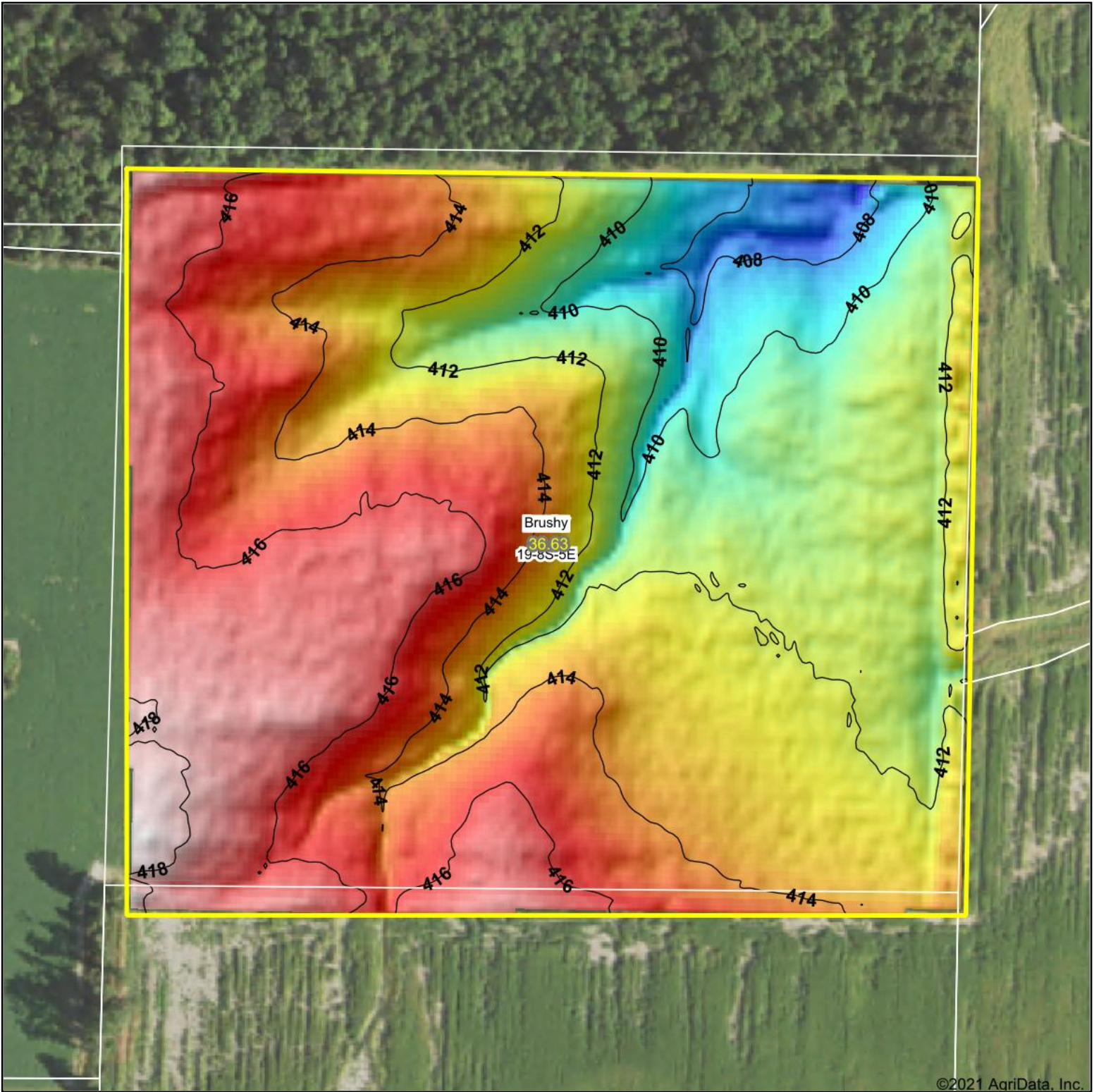
Crop yields and productivity indices for optimum management (B811) are maintained at the following NRES web site: <http://soilproductivity.nres.illinois.edu/>

** Indexes adjusted for slope and erosion according to Bulletin 811 Table S3

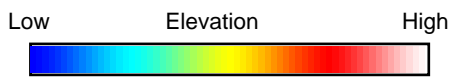
e Soils in the well drained group were not rated for grass-legume and are shown with a zero "0".

*c: Using Capabilities Class Dominant Condition Aggregation Method

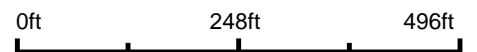
Soils data provided by USDA and NRCS. Soils data provided by University of Illinois at Champaign-Urbana.



©2021 AgriData, Inc.



Source: USGS 3 meter dem



Interval(ft): 2

Min: 406.0

Max: 418.7

Range: 12.7

Average: 413.5

Standard Deviation: 2.56 ft



4/15/2021

19-8S-5E
Saline County
Illinois

map center: 37° 48' 53.37, -88° 41' 44.04



Maps Provided By:



© AgriData, Inc. 2021 www.AgriDataInc.com

Field borders provided by Farm Service Agency as of 5/21/2008.