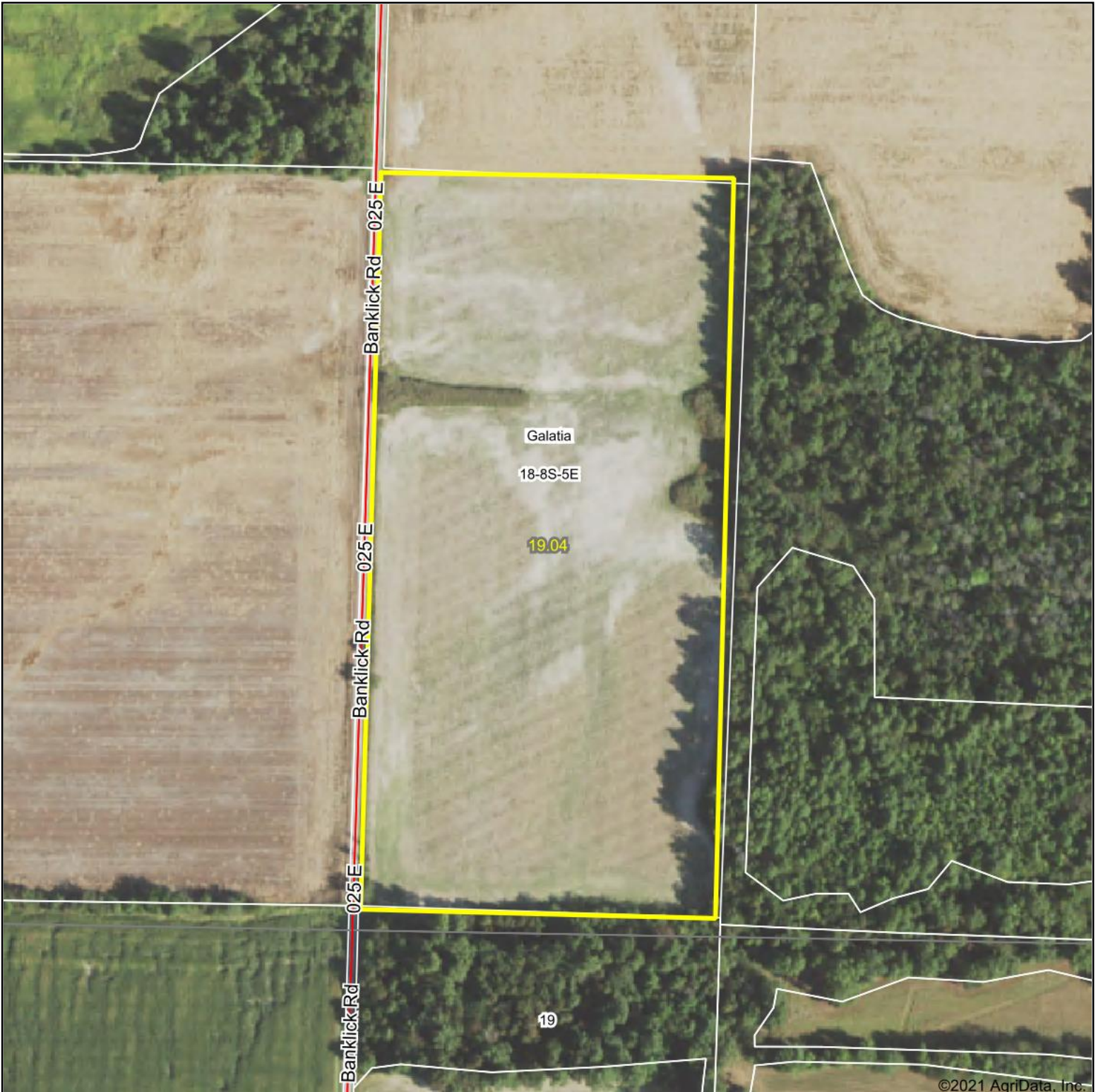


Aerial Map



©2021 AgriData, Inc.

Map Center: 37° 49' 17.77, -88° 42' 4.23



18-8S-5E
Saline County
Illinois



4/15/2021



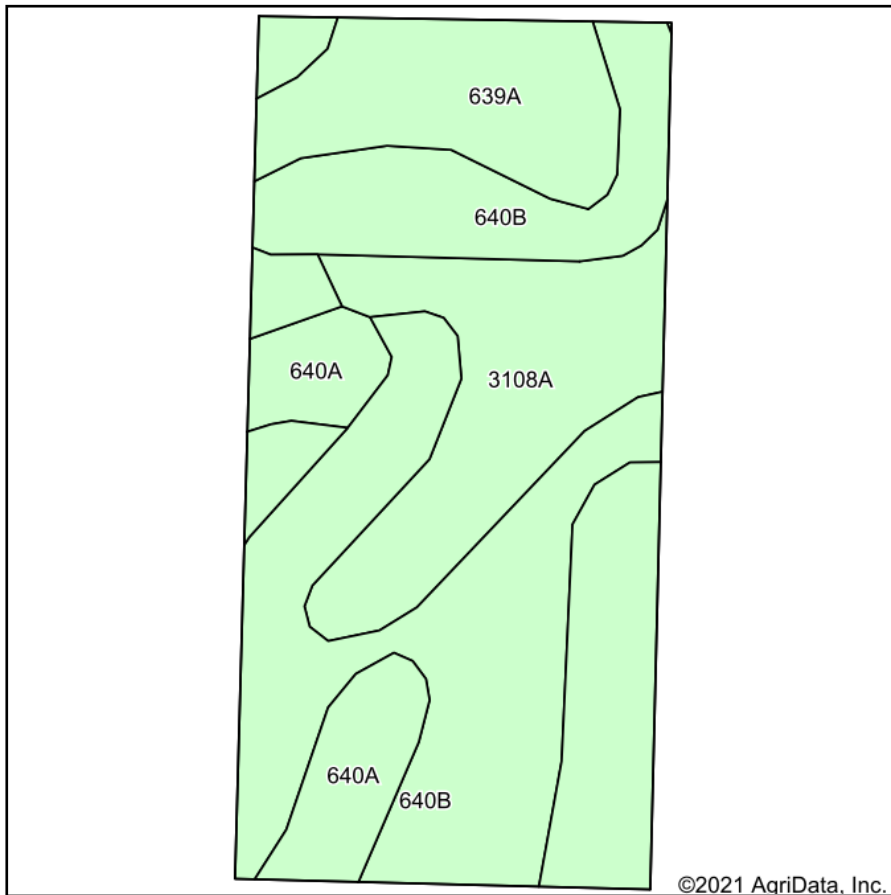
Maps Provided By:



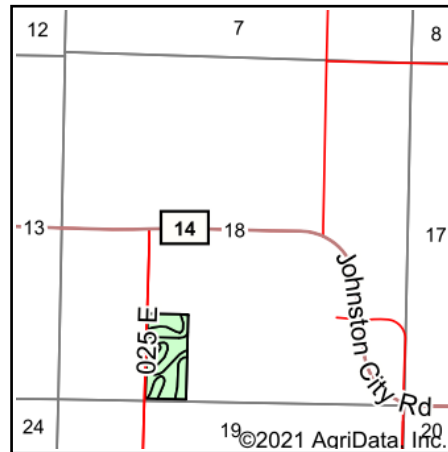
© AgriData, Inc. 2021 www.AgriDataInc.com

Field borders provided by Farm Service Agency as of 5/21/2008.

Soils Map



Soils data provided by USDA and NRCS.



State: **Illinois**
 County: **Saline**
 Location: **18-8S-5E**
 Township: **Galatia**
 Acres: **19.04**
 Date: **4/15/2021**



Area Symbol: IL165, Soil Area Version: 15

Code	Soil Description	Acres	Percent of field	Corn Bu/A	Soybeans Bu/A	Wheat Bu/A	Grass-legume e hay, T/A	Crop productivity index for optimum management
**640B	Bluford silt loam, bench, 2 to 5 percent slopes	8.41	44.2%	**135	**44	**54	0.00	**100
639A	Wynoose silt loam, bench, 0 to 2 percent slopes	5.24	27.5%	128	40	51	4.26	95
3108A	Bonnie silt loam, 0 to 2 percent slopes, frequently flooded	3.57	18.8%	149	49	59	4.64	111
640A	Bluford silt loam, bench, 0 to 2 percent slopes	1.82	9.6%	136	44	55	0.00	101
Weighted Average				135.8	43.8	54.2	2.04	100.8

Table: Optimum Crop Productivity Ratings for Illinois Soil by K.R. Olson and J.M. Lang, Office of Research, ACES, University of Illinois at Champaign-Urbana. Version: 1/2/2012 Amended Table S2 B811

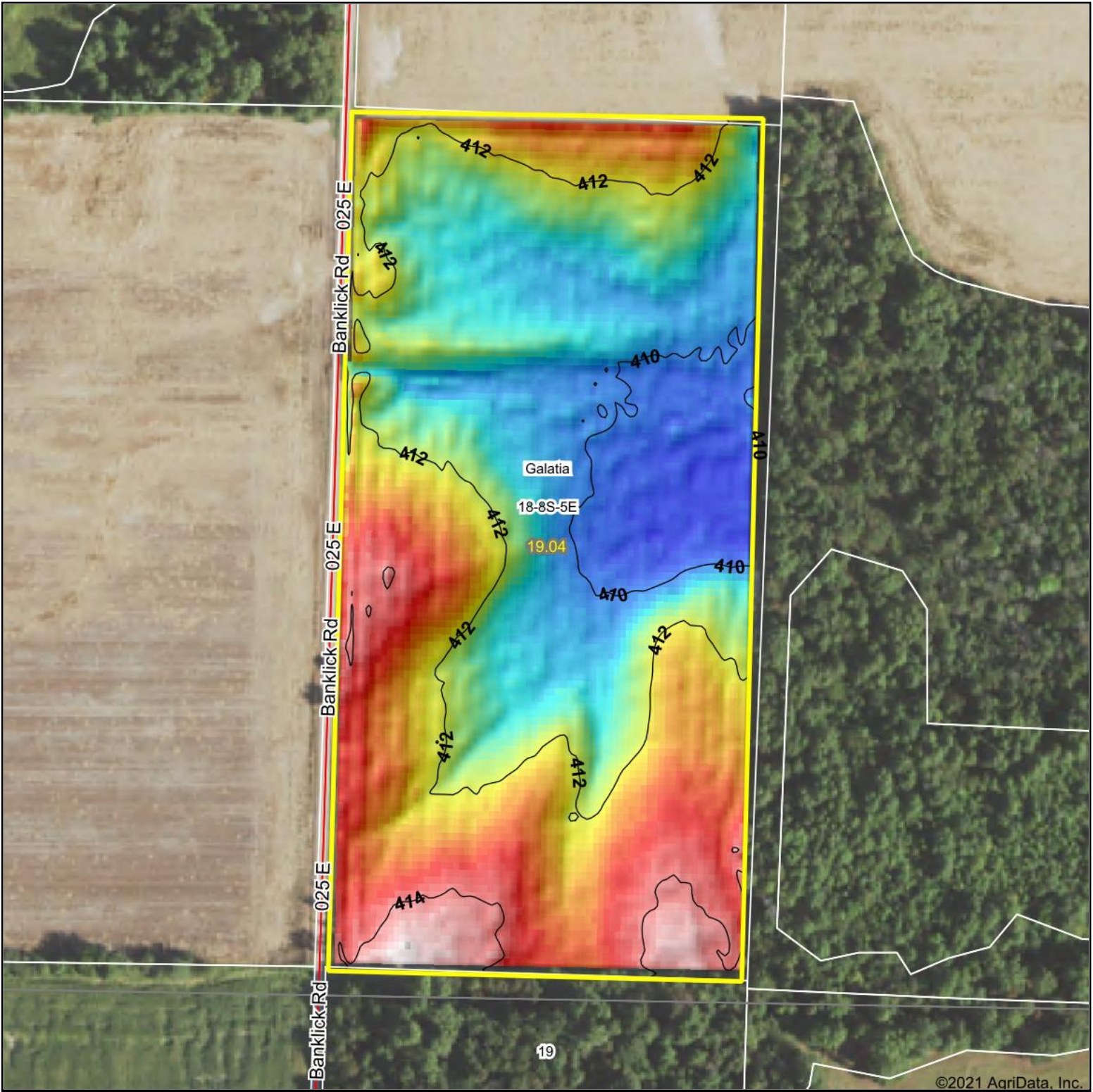
Crop yields and productivity indices for optimum management (B811) are maintained at the following NRES web site: <http://soilproductivity.nres.illinois.edu/>

** Indexes adjusted for slope and erosion according to Bulletin 811 Table S3

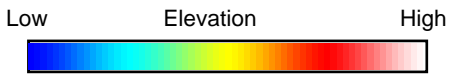
e Soils in the well drained group were not rated for grass-legume and are shown with a zero "0".

*c: Using Capabilities Class Dominant Condition Aggregation Method

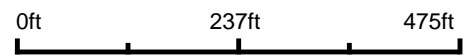
Soils data provided by USDA and NRCS. Soils data provided by University of Illinois at Champaign-Urbana.



©2021 AgriData, Inc.



Source: USGS 3 meter dem
 Interval(ft): 2
 Min: 409.5
 Max: 414.8
 Range: 5.3
 Average: 411.8
 Standard Deviation: 1.35 ft



Maps Provided By:



© AgriData, Inc. 2021 www.AgriDataInc.com

Field borders provided by Farm Service Agency as of 5/21/2008.



4/15/2021

18-8S-5E
Saline County
Illinois

map center: 37° 49' 17.77, -88° 42' 4.23