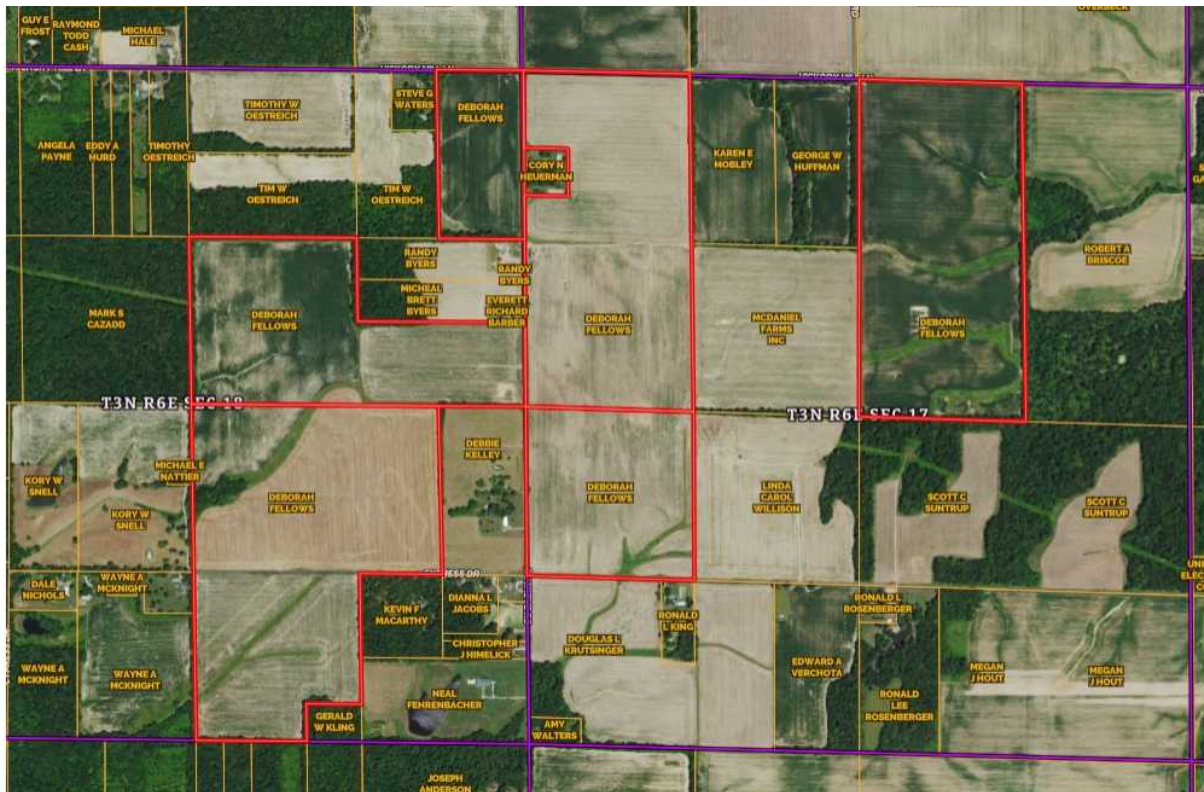
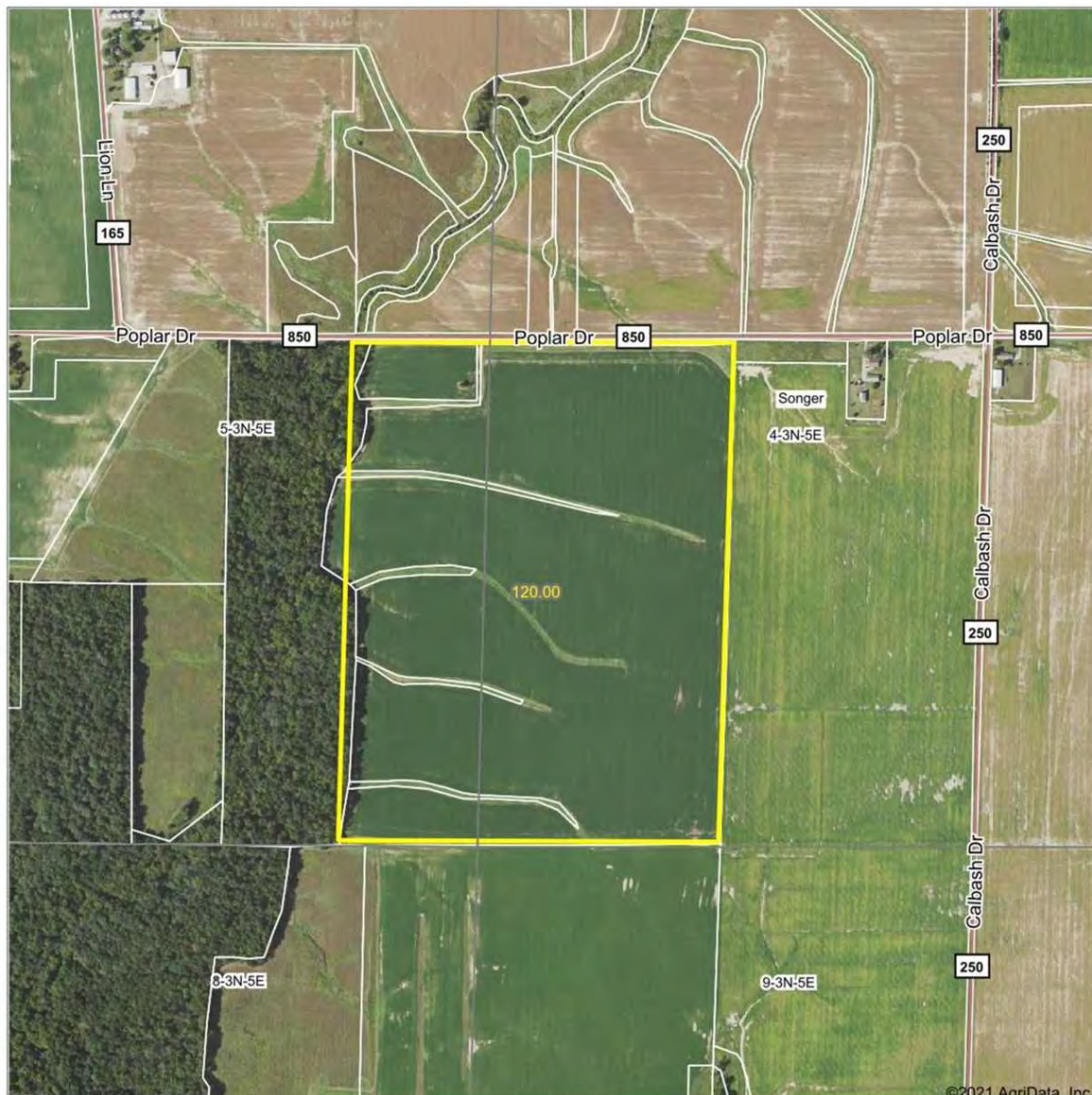


Assessor Parcel Maps



Aerial Photograph - Tract 1 (120 acres)

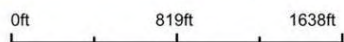
Aerial Map



©2021 AgriData, Inc.



Map Center: 38.727745, -88.656370



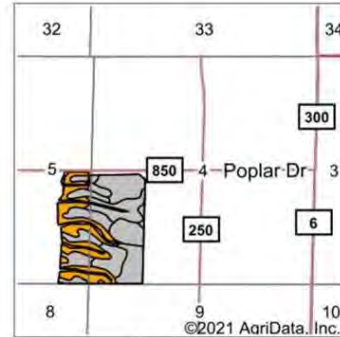
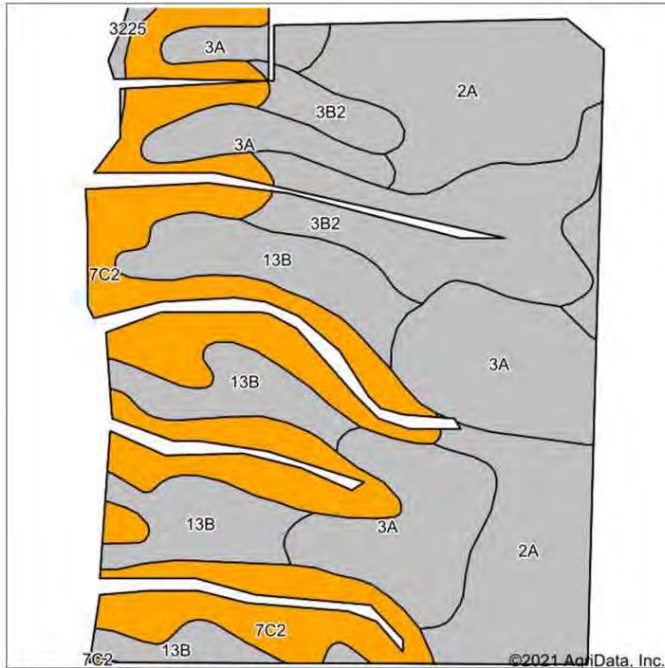
4-3N-5E
Clay County
Illinois



Field borders provided by Farm Service Agency as of 5/21/2008.

Cropland Soils Map (Tract 1)

Soils Map



State: **Illinois**
 County: **Clay**
 Location: **5-3N-5E**
 Township: **Songer**
 Acres: **110.41**
 Date: **9/3/2021**

Brett Berger, ARA

Maps Provided By: **surety**
 CUSTOMIZED ONLINE MAPPING
 © AgriData, Inc. 2021 www.AgriDataInc.com



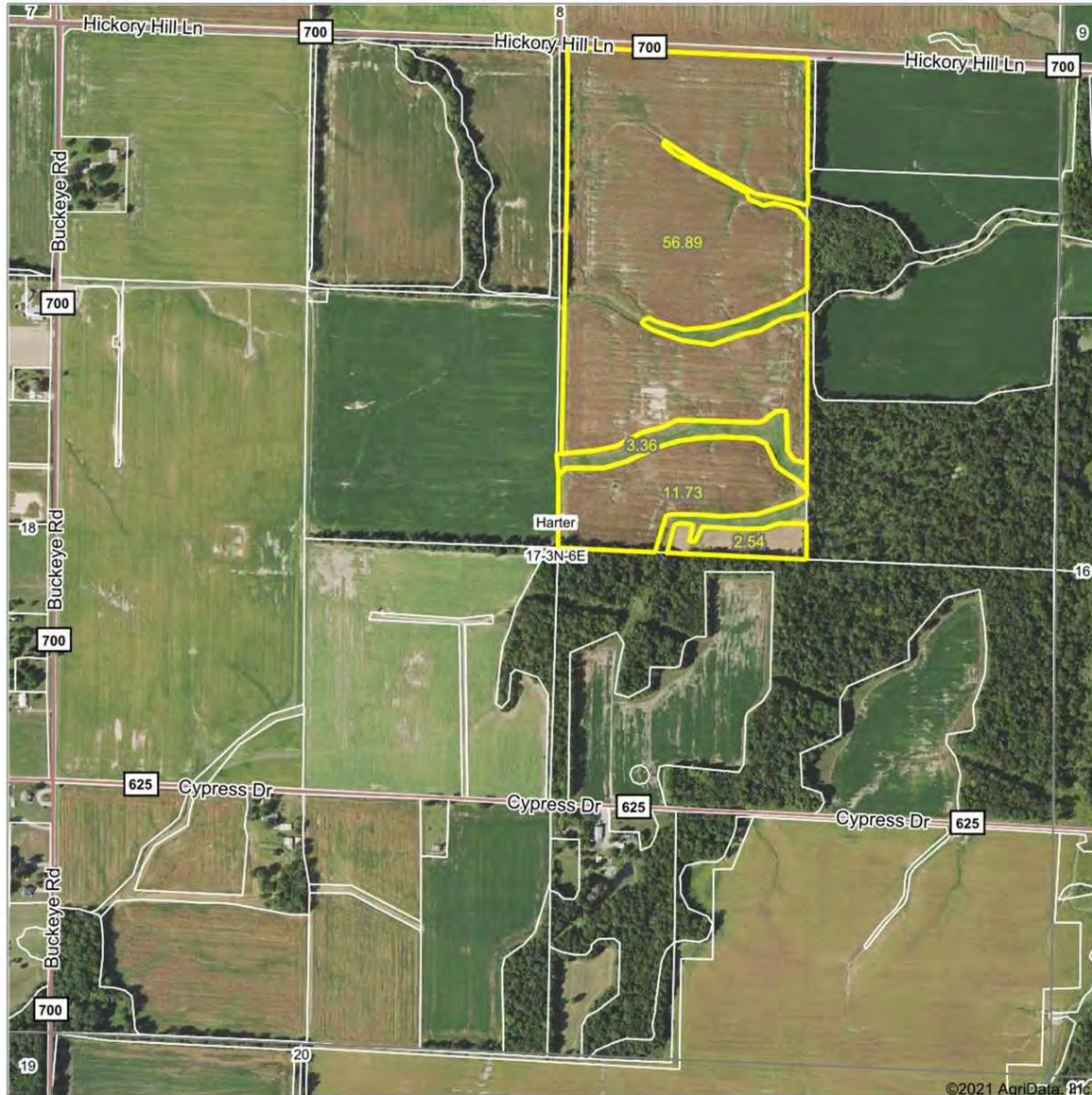
Soils data provided by USDA and NRCS.

Area Symbol: IL025, Soil Area Version: 15								
Code	Soil Description	Acres	Percent of field	Il. State Productivity Index Legend	Corn Bu/A	Soybeans Bu/A	Wheat Bu/A	Crop productivity index for optimum management
**7C2	Atlas silt loam, 5 to 10 percent slopes, eroded	30.58	27.7%		**105	**37	**41	**81
2A	Cisne silt loam, 0 to 2 percent slopes	24.70	22.4%		149	46	59	109
3A	Hoyleton silt loam, 0 to 2 percent slopes	23.07	20.9%		146	46	58	108
**13B	Bluford silt loam, 2 to 5 percent slopes	17.10	15.5%		**135	**44	**54	**100
**3B2	Hoyleton silt loam, 2 to 5 percent slopes, eroded	14.45	13.1%		**139	**44	**55	**103
3225	Holton silt loam, frequently flooded	0.51	0.5%		135	43	50	100
Weighted Average					132.6	42.9	52.5	98.8

Table: Optimum Crop Productivity Ratings for Illinois Soil by K.R. Olson and J.M. Lang, Office of Research, ACES, University of Illinois at Champaign-Urbana. Version: 1/2/2012 Amended Table S2 B811
 Crop yields and productivity indices for optimum management (B811) are maintained at the following NRES web site: <http://soilproductivity.nres.illinois.edu/>
 ** Indexes adjusted for slope and erosion according to Bulletin 811 Table S3
 Soils data provided by USDA and NRCS. Soils data provided by University of Illinois at Champaign-Urbana.

Aerial Photograph - Tract 2 (80 acres)

Aerial Map




 Brett Berger, ARA

Map Center: 38.701991, -88.554562

0ft 826ft 1651ft

17-3N-6E
Clay County
Illinois



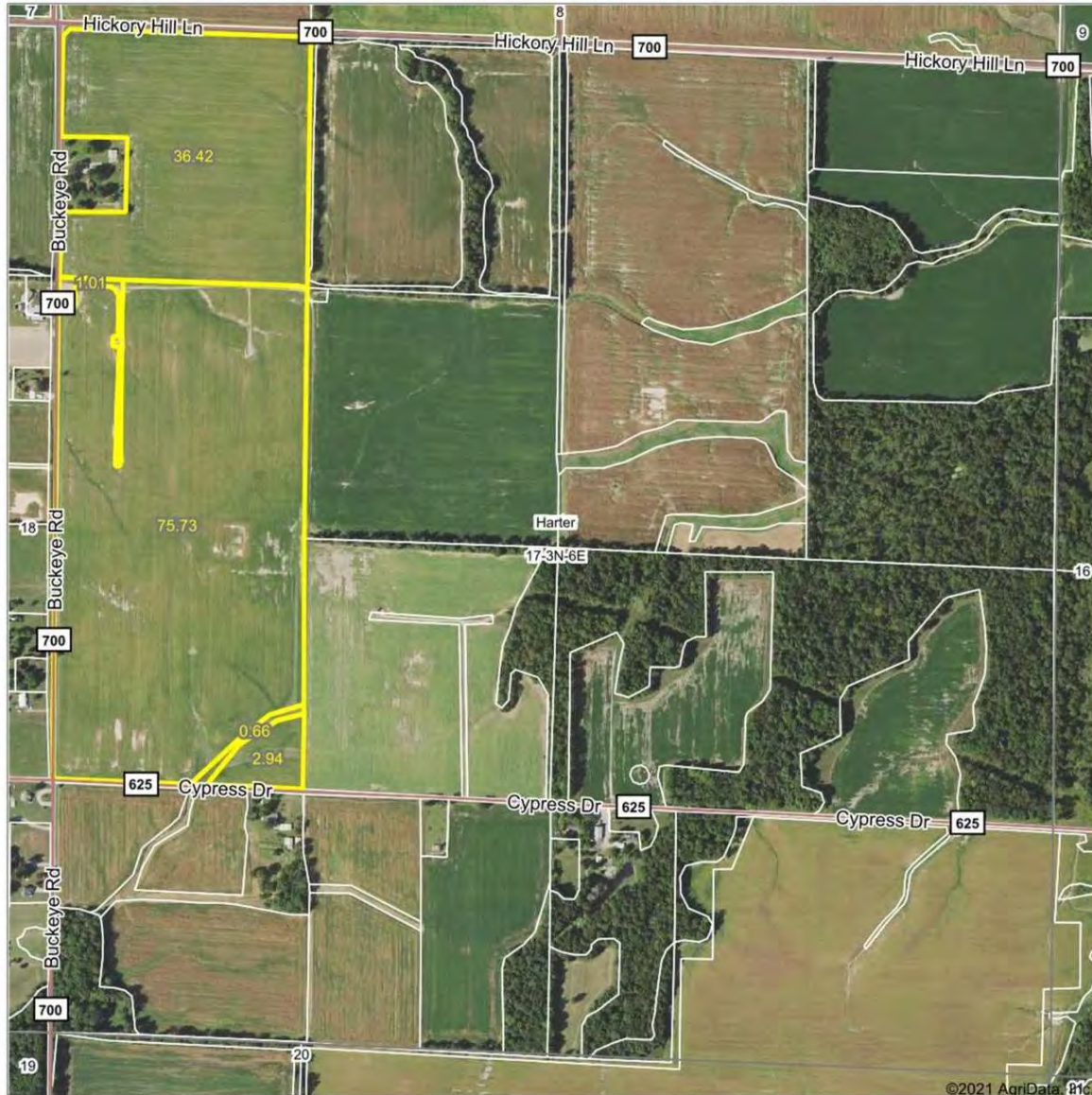
Maps Provided By:

 CUSTOMIZED ONLINE MAPPING
 © AgriData, Inc. 2021 www.AgrIDataInc.com

Field borders provided by Farm Service Agency as of 5/21/2008.

Aerial Photograph - Tract 3 (117 acres)

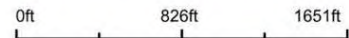
Aerial Map



©2021 AgriData, Inc.



Map Center: 38.701991, -88.554562



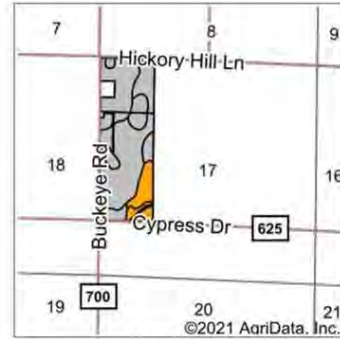
17-3N-6E
Clay County
Illinois



Field borders provided by Farm Service Agency as of 5/21/2008.

Cropland Soils Map (Tract 3)

Soils Map



State: **Illinois**
 County: **Clay**
 Location: **17-3N-6E**
 Township: **Harter**
 Acres: **115.09**
 Date: **9/2/2021**

Brett Berger, ARA

Maps Provided By
surety
 CUSTOMIZED ONLINE MAPPING
 © AgriData, Inc. 2021 www.AgriDataInc.com



Soils data provided by USDA and NRCS.

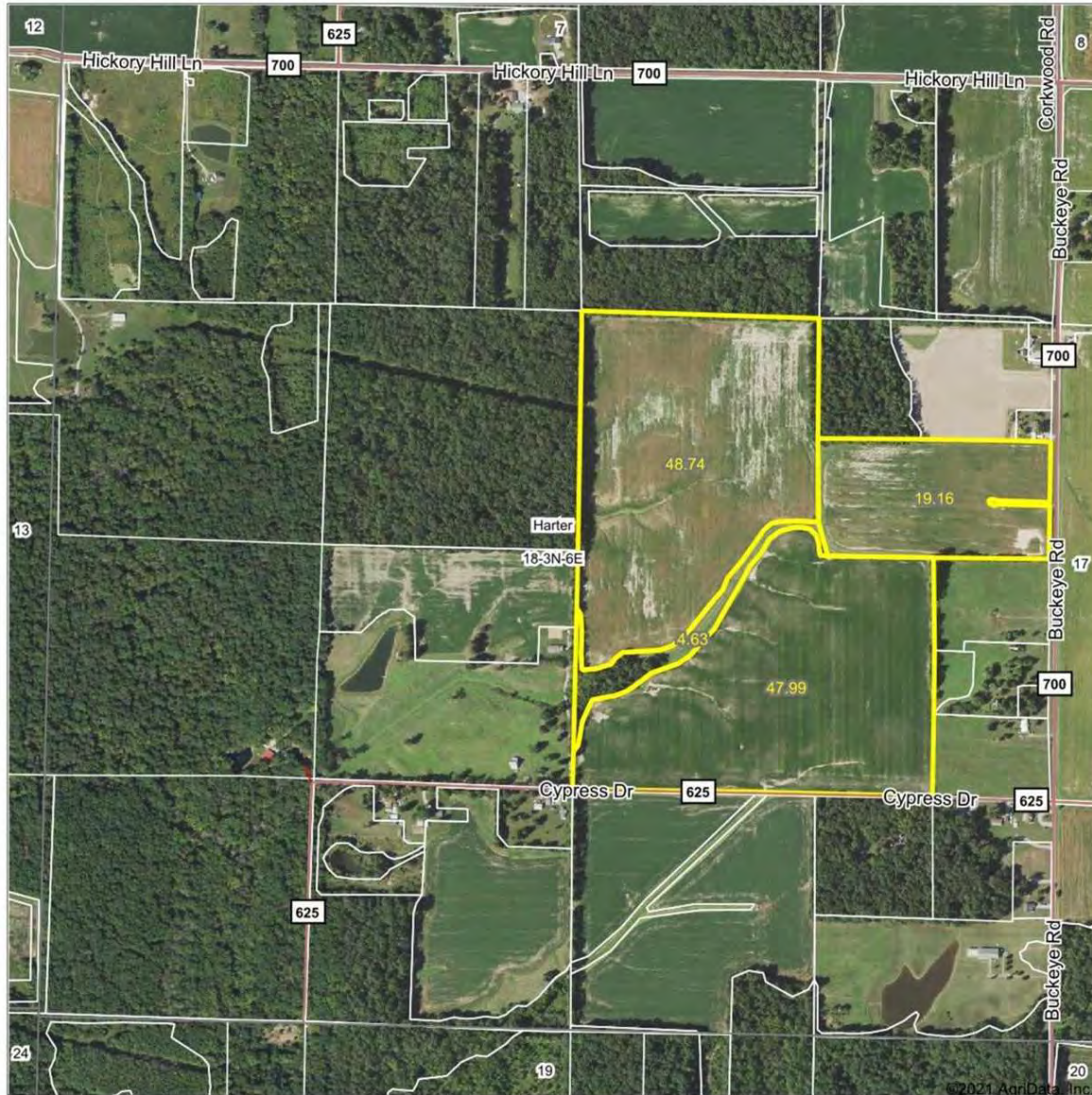
Area Symbol: IL025, Soil Area Version: 15

Code	Soil Description	Acres	Percent of field	Il. State Productivity Index Legend	Corn Bu/A	Soybeans Bu/A	Wheat Bu/A	Crop productivity index for optimum management
3A	Hoyleton silt loam, 0 to 2 percent slopes	55.30	48.0%		146	46	58	108
2A	Cisne silt loam, 0 to 2 percent slopes	29.67	25.8%		149	46	59	109
12A	Wynoose silt loam, 0 to 2 percent slopes	9.43	8.2%		128	42	51	97
**3B	Hoyleton silt loam, 2 to 5 percent slopes	7.25	6.3%		**145	**46	**57	**107
13A	Bluford silt loam, 0 to 2 percent slopes	5.20	4.5%		136	44	55	101
**13B2	Bluford silt loam, 2 to 5 percent slopes, eroded	4.92	4.3%		**129	**42	**52	**96
**3B2	Hoyleton silt loam, 2 to 5 percent slopes, eroded	3.32	2.9%		**139	**44	**55	**103
Weighted Average					143.9	45.4	57.1	106.3

Table: Optimum Crop Productivity Ratings for Illinois Soil by K.R. Olson and J.M. Lang, Office of Research, ACES, University of Illinois at Champaign-Urbana. Version: 1/2/2012 Amended Table S2 B811
 Crop yields and productivity indices for optimum management (B811) are maintained at the following NRES web site: <http://soilproductivity.nres.illinois.edu/>
 ** Indexes adjusted for slope and erosion according to Bulletin 811 Table S3
 Soils data provided by USDA and NRCS. Soils data provided by University of Illinois at Champaign-Urbana.

Aerial Photograph - Tract 4 (120 acres)

Aerial Map



Map Center: 38.702245, -88.573609

0ft 870ft 1739ft

18-3N-6E
Clay County
Illinois

©2021 AgriData, Inc.

ARA
Brett Berger, ARA

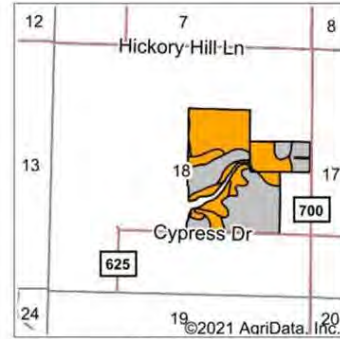
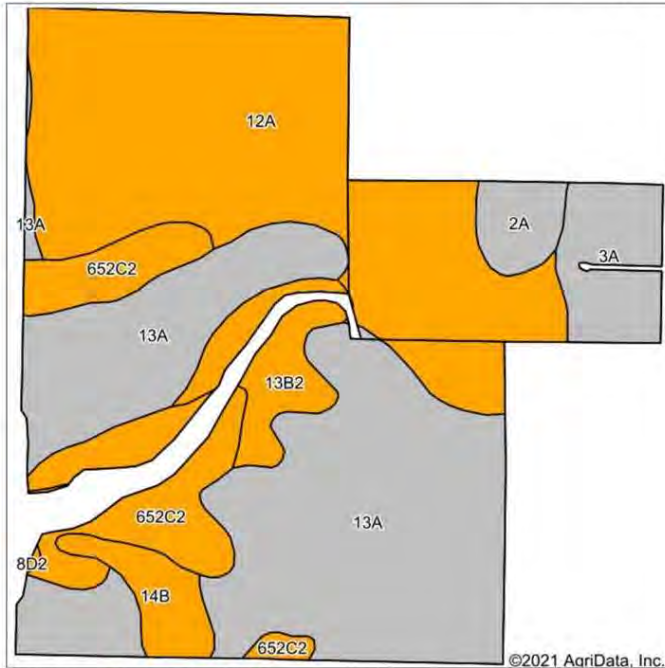
Maps Provided By:
surety
CUSTOMIZED ONLINE MAPPING
© AgriData, Inc. 2021 www.AgridataInc.com

Field borders provided by Farm Service Agency as of 5/21/2008.

N
W E
S
9/2/2021

Cropland Soils Map (Tract 4)

Soils Map



State: **Illinois**
 County: **Clay**
 Location: **18-3N-6E**
 Township: **Harter**
 Acres: **115.89**
 Date: **9/2/2021**

Brett Berger, ARA

Maps Provided By: **surety**
 CUSTOMIZED ONLINE MAPPING
 © AgriData, Inc. 2021 www.AgriDataInc.com



Soils data provided by USDA and NRCS.

Area Symbol: IL025, Soil Area Version: 15

Code	Soil Description	Acres	Percent of field	Il. State Productivity Index Legend	Corn Bu/A	Soybeans Bu/A	Wheat Bu/A	Crop productivity index for optimum management
13A	Bluford silt loam, 0 to 2 percent slopes	45.73	39.5%		136	44	55	101
12A	Wynoose silt loam, 0 to 2 percent slopes	40.54	35.0%		128	42	51	97
**652C2	Passport silt loam, 5 to 10 percent slopes, eroded	12.00	10.4%		**116	**39	**51	**88
3A	Hoyleton silt loam, 0 to 2 percent slopes	5.96	5.1%		146	46	58	108
**13B2	Bluford silt loam, 2 to 5 percent slopes, eroded	5.36	4.6%		**129	**42	**52	**96
**14B	Ava silt loam, 2 to 5 percent slopes	3.39	2.9%		**134	**44	**54	**99
2A	Cisne silt loam, 0 to 2 percent slopes	2.80	2.4%		149	46	59	109
**8D2	Hickory silt loam, 10 to 18 percent slopes, eroded	0.11	0.1%		**108	**36	**44	**82
Weighted Average					131.6	42.8	53.3	98.5

Table: Optimum Crop Productivity Ratings for Illinois Soil by K.R. Olson and J.M. Lang, Office of Research, ACES, University of Illinois at Champaign-Urbana. Version: 1/2/2012 Amended Table S2 B811

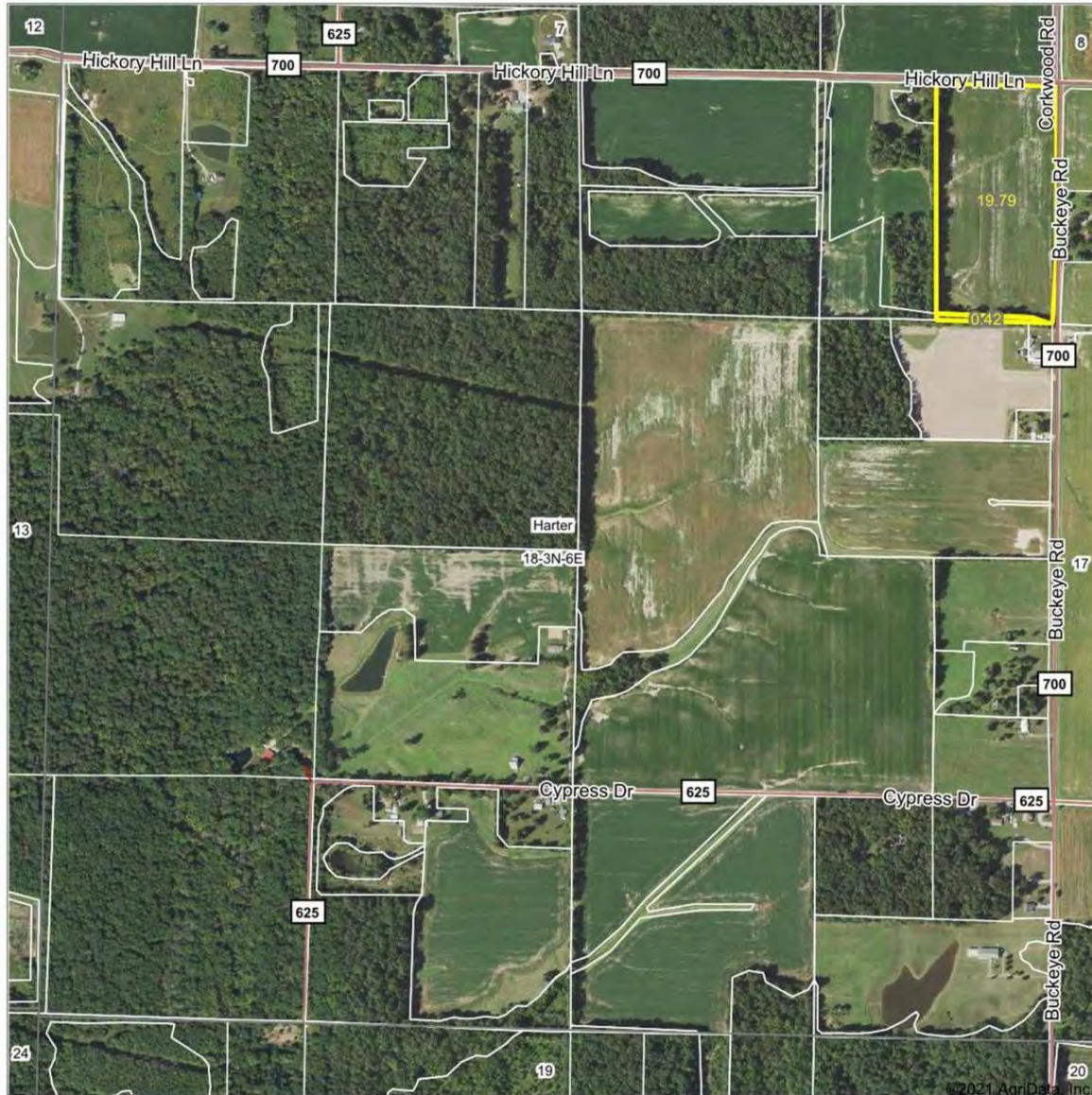
Crop yields and productivity indices for optimum management (B811) are maintained at the following NRES web site: <http://soilproductivity.nres.illinois.edu/>

** Indexes adjusted for slope and erosion according to Bulletin 811 Table S3

Soils data provided by USDA and NRCS. Soils data provided by University of Illinois at Champaign-Urbana.

Aerial Photograph - Tract 5 (20 acres)

Aerial Map



Map Center: 38.702245, -88.573609

0ft 870ft 1739ft

Brett Berger, ARA

18-3N-6E
Clay County
Illinois

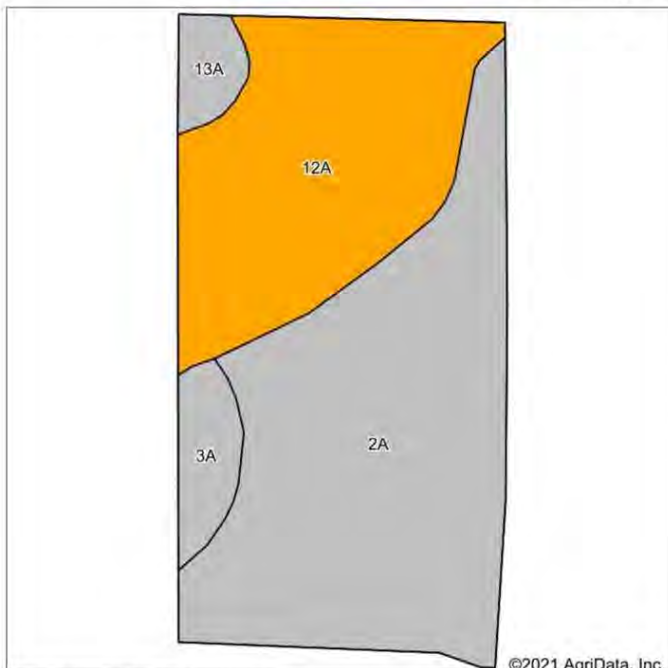
Maps Provided By:
surety
CUSTOMIZED ONLINE MAPPING
© AgriData, Inc. 2021 www.AgnDataInc.com

Field borders provided by Farm Service Agency as of 5/21/2008.

9/2/2021

Cropland Soils Map (Tract 5)

Soils Map



State: **Illinois**
 County: **Clay**
 Location: **18-3N-6E**
 Township: **Harter**
 Acres: **19.79**
 Date: **9/2/2021**



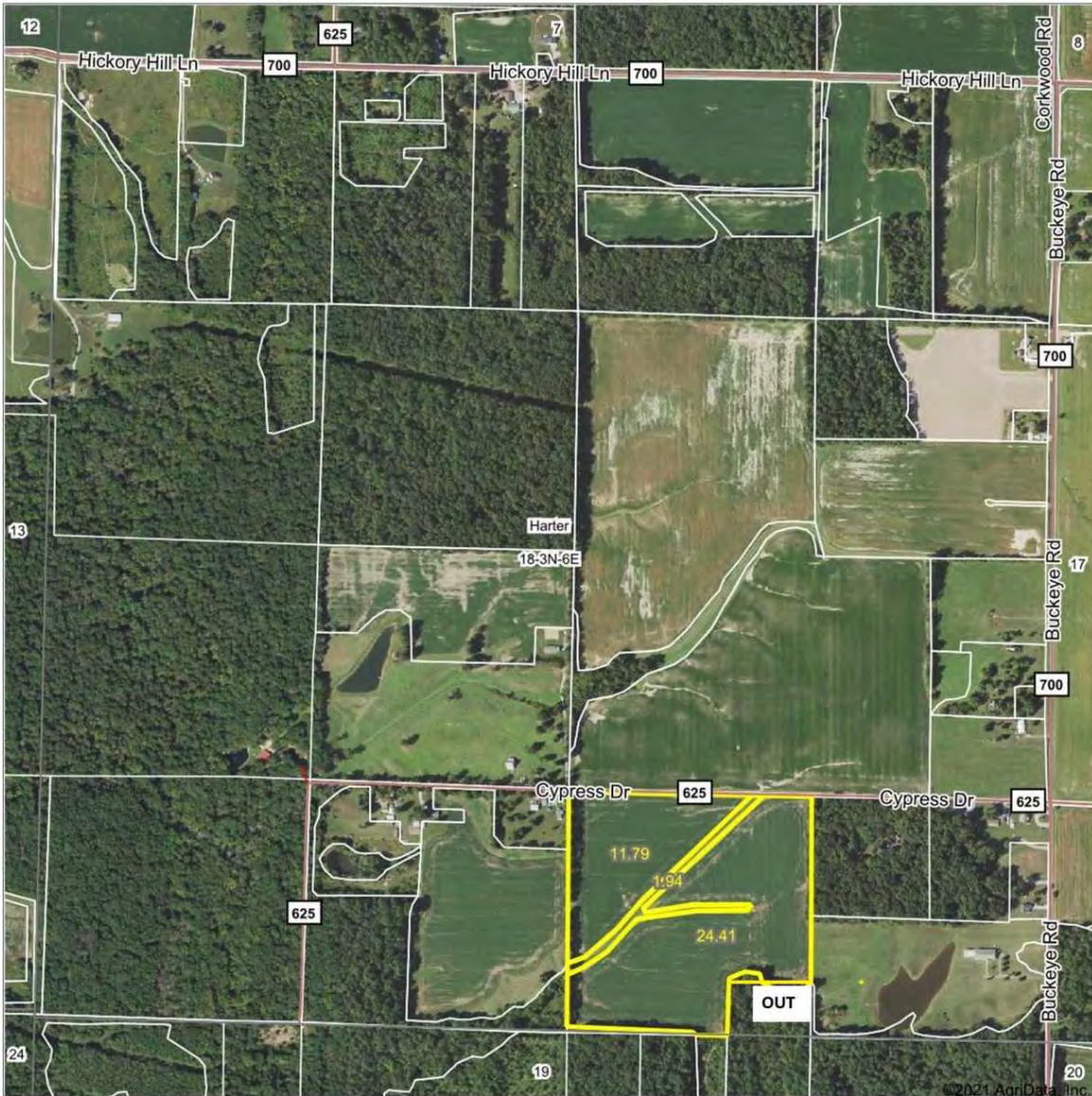
Area Symbol: IL025, Soil Area Version: 15

Code	Soil Description	Acres	Percent of field	Il. State Productivity Index Legend	Corn Bu/A	Soybeans Bu/A	Wheat Bu/A	Crop productivity index for optimum management
2A	Cisne silt loam, 0 to 2 percent slopes	11.07	55.9%		149	46	59	109
12A	Wynoose silt loam, 0 to 2 percent slopes	7.08	35.8%		128	42	51	97
3A	Hoyleton silt loam, 0 to 2 percent slopes	0.99	5.0%		146	46	58	108
13A	Bluford silt loam, 0 to 2 percent slopes	0.65	3.3%		136	44	55	101
Weighted Average					140.9	44.5	56	104.4

Table: Optimum Crop Productivity Ratings for Illinois Soil by K.R. Olson and J.M. Lang, Office of Research, ACES, University of Illinois at Champaign-Urbana. Version: 1/2/2012 Amended Table S2 B811
 Crop yields and productivity indices for optimum management (B811) are maintained at the following NRES web site: <http://soilproductivity.nres.illinois.edu/>
 ** Indexes adjusted for slope and erosion according to Bulletin 811 Table S3
 Soils data provided by USDA and NRCS. Soils data provided by University of Illinois at Champaign-Urbana.

Aerial Photograph - Tract 6 (37 acres)

Aerial Map



Map Center: 38.702245, -88.573609

0ft 870ft 1739ft

Brett Berger, ARA

18-3N-6E
Clay County
Illinois

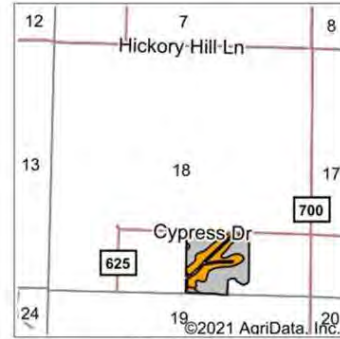
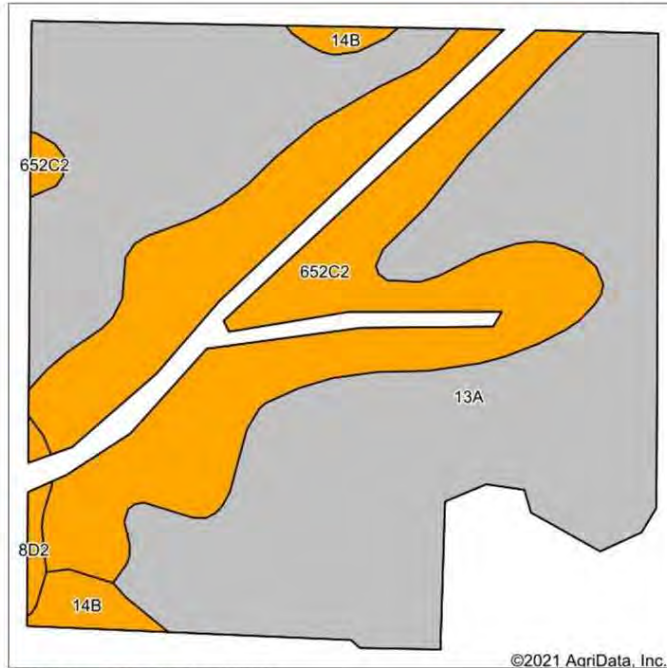
surety
CUSTOMIZED ONLINE MAPPING
© AgriData, Inc. 2021 www.AgriDataInc.com

Field borders provided by Farm Service Agency as of 5/21/2008.

9/3/2021

Cropland Soils Map (Tract 6)

Soils Map



State: **Illinois**
 County: **Clay**
 Location: **18-3N-6E**
 Township: **Harter**
 Acres: **36.2**
 Date: **9/2/2021**

 Brett Berger, ARA

Maps Provided By:

 CUSTOMIZED ONLINE MAPPING
 © AgriData, Inc. 2021 www.AgriDataInc.com



Soils data provided by USDA and NRCS.

Area Symbol: IL025, Soil Area Version: 15								
Code	Soil Description	Acres	Percent of field	Il. State Productivity Index Legend	Corn Bu/A	Soybeans Bu/A	Wheat Bu/A	Crop productivity index for optimum management
13A	Bluford silt loam, 0 to 2 percent slopes	23.10	63.8%		136	44	55	101
**652C2	Passport silt loam, 5 to 10 percent slopes, eroded	12.03	33.2%		**116	**39	**51	**88
**14B	Ava silt loam, 2 to 5 percent slopes	0.79	2.2%		**134	**44	**54	**99
**8D2	Hickory silt loam, 10 to 18 percent slopes, eroded	0.28	0.8%		**108	**36	**44	**82
Weighted Average					129.1	42.3	53.6	96.5

Table: Optimum Crop Productivity Ratings for Illinois Soil by K.R. Olson and J.M. Lang, Office of Research, ACES, University of Illinois at Champaign-Urbana. Version: 1/2/2012 Amended Table S2 B811
 Crop yields and productivity indices for optimum management (B811) are maintained at the following NRES web site: <http://soilproductivity.nres.illinois.edu/>
 ** Indexes adjusted for slope and erosion according to Bulletin 811 Table S3
 Soils data provided by USDA and NRCS. Soils data provided by University of Illinois at Champaign-Urbana.