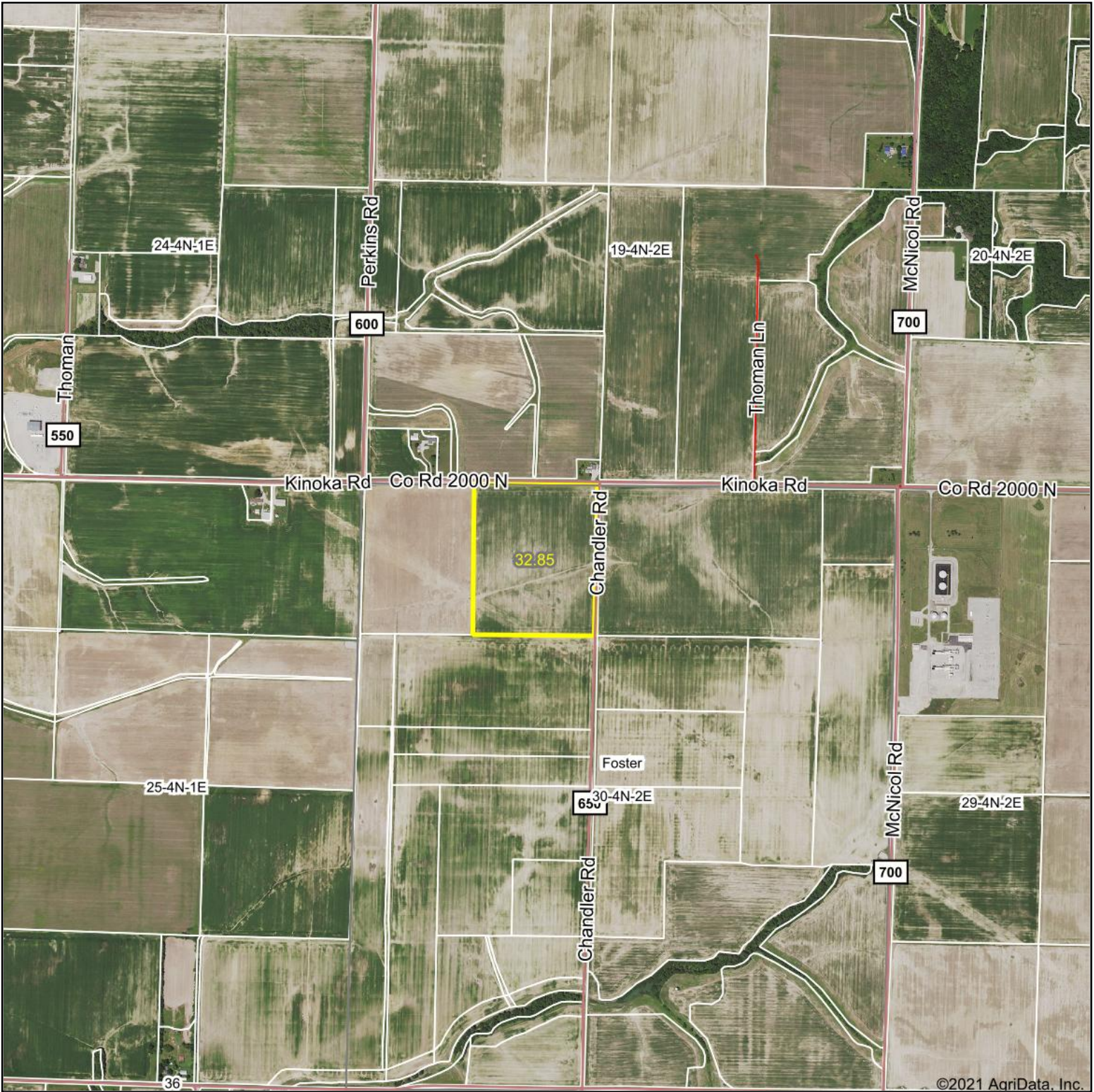
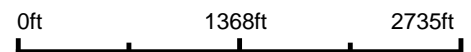


Aerial Map



©2021 AgriData, Inc.

Map Center: 38° 45' 48.75, -89° 1' 30.85



30-4N-2E
Marion County
Illinois

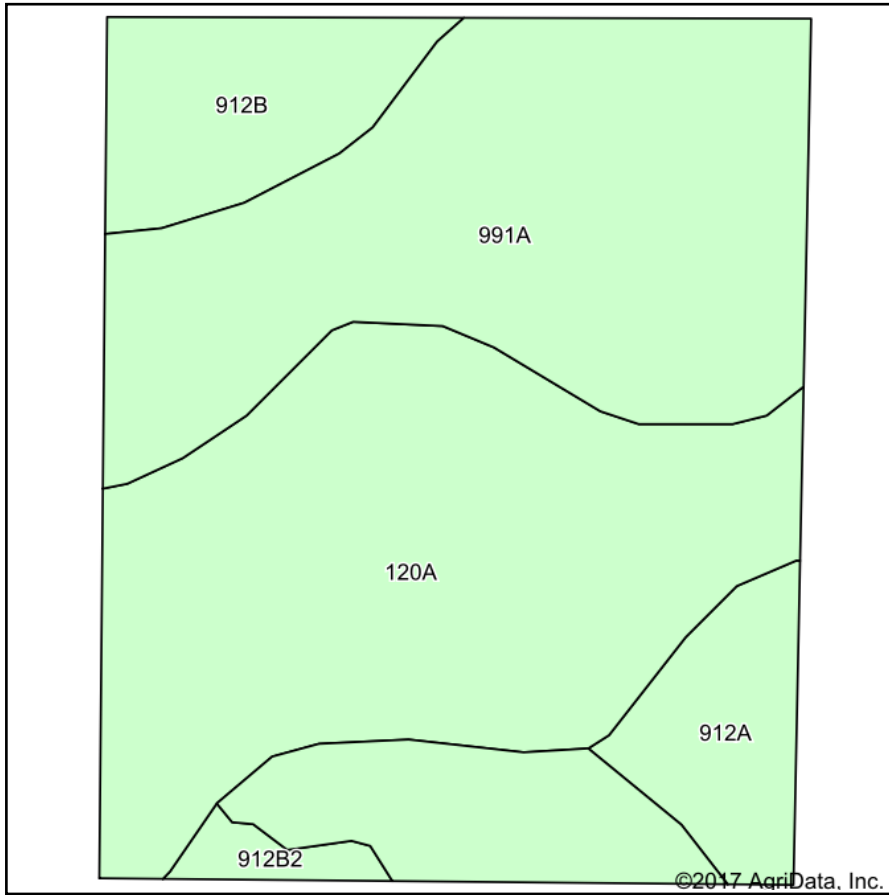


10/29/2021

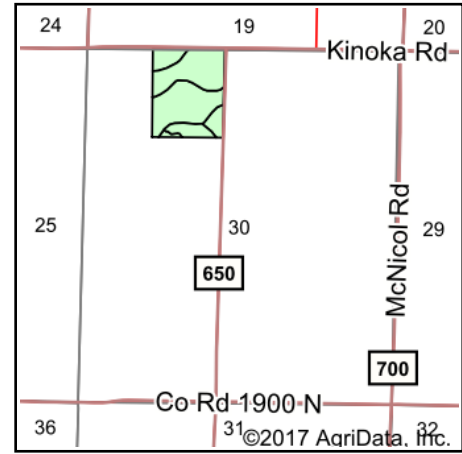
Maps Provided By:
 surety
CUSTOMIZED ONLINE MAPPING
© AgriData, Inc. 2021 www.AgriDataInc.com

Field borders provided by Farm Service Agency as of 5/21/2008.

Soils Map



Soils data provided by USDA and NRCS.



State: **Illinois**
 County: **Marion**
 Location: **30-4N-2E**
 Township: **Foster**
 Acres: **32.85**
 Date: **9/19/2017**



Maps Provided By:



© AgriData, Inc. 2017

www.AgriDataInc.com



Area Symbol: IL121, Soil Area Version: 13

Code	Soil Description	Acres	Percent of field	Il. State Productivity Index Legend	Corn Bu/A	Soybeans Bu/A	Wheat Bu/A	Grass-legume e hay, T/A	Crop productivity index for optimum management
991A	Cisne-Huey silt loams, 0 to 2 percent slopes	14.34	43.7%		133	45	52	4.19	102
120A	Huey silt loam, 0 to 2 percent slopes	12.99	39.5%		109	43	43	3.51	89
**912B	Hoyleton-Darmstadt silt loams, 2 to 5 percent slopes	2.84	8.6%		**133	**45	**51	**4.20	**102
912A	Hoyleton-Darmstadt silt loams, 0 to 2 percent slopes	2.19	6.7%		134	45	52	4.24	103
**912B2	Hoyleton-Darmstadt silt loams, 2 to 5 percent slopes, eroded	0.49	1.5%		**125	**42	**48	**3.94	**96
Weighted Average					123.5	44.2	48.3	3.92	96.8

Table: Optimum Crop Productivity Ratings for Illinois Soil by K.R. Olson and J.M. Lang, Office of Research, ACES, University of Illinois at Champaign-Urbana. Version: 1/2/2012 Amended Table S2 B811

Crop yields and productivity indices for optimum management (B811) are maintained at the following NRES web site:

<https://www.ideals.illinois.edu/handle/2142/1027/>

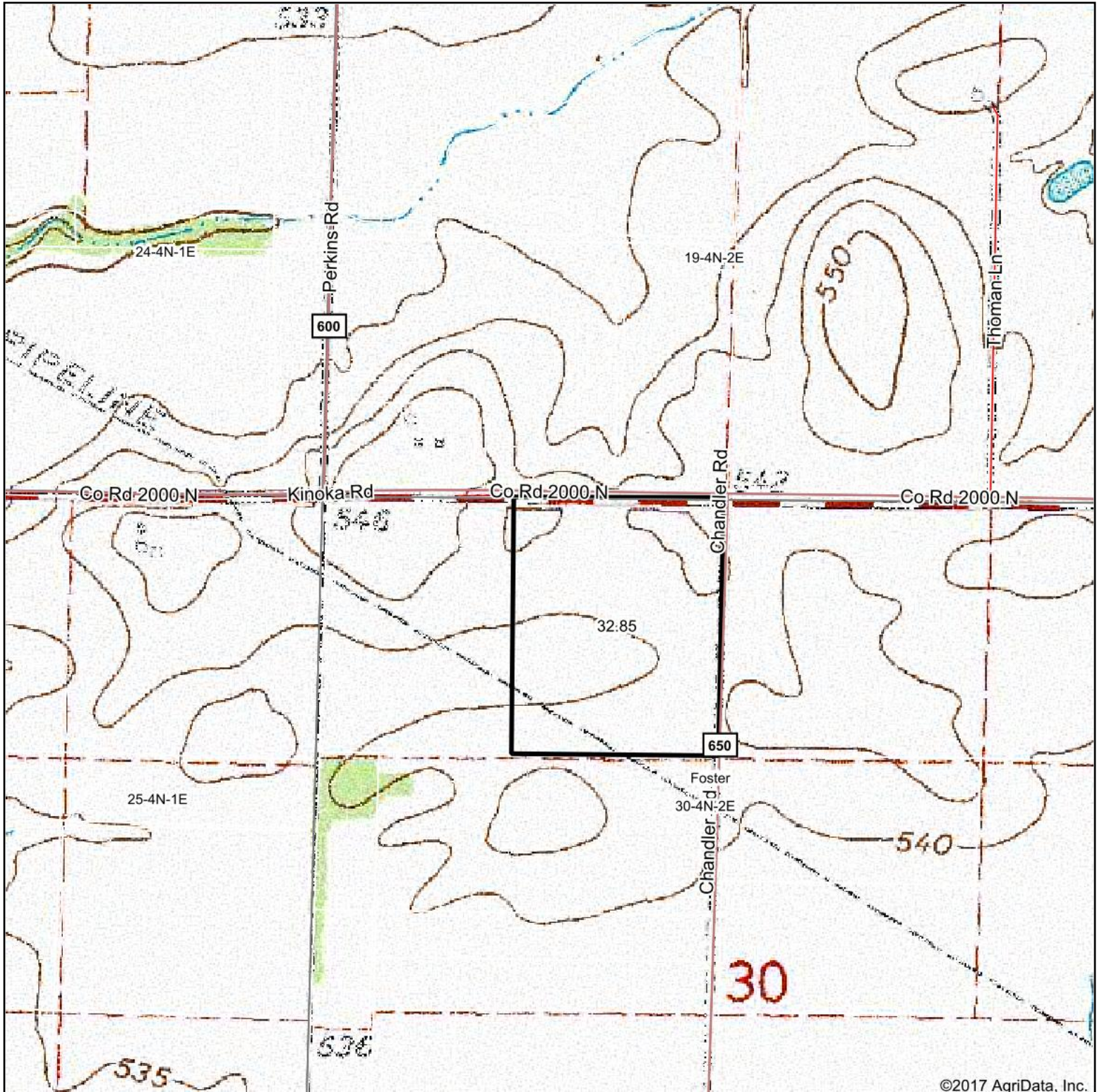
** Indexes adjusted for slope and erosion according to Bulletin 811 Table S3

e Soils in the well drained group were not rated for grass-legume and are shown with a zero "0".

Soils data provided by USDA and NRCS. Soils data provided by University of Illinois at Champaign-Urbana.

*c: Using Capabilities Class Dominant Condition Aggregation Method

Topography Map



map center: 38° 45' 51.55, -89° 1' 36.62

0ft 804ft 1608ft



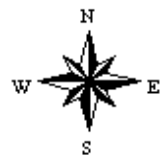
Maps Provided By:



© AgriData, Inc. 2017

www.AgriDataInc.com

30-4N-2E
Marion County
Illinois



9/19/2017