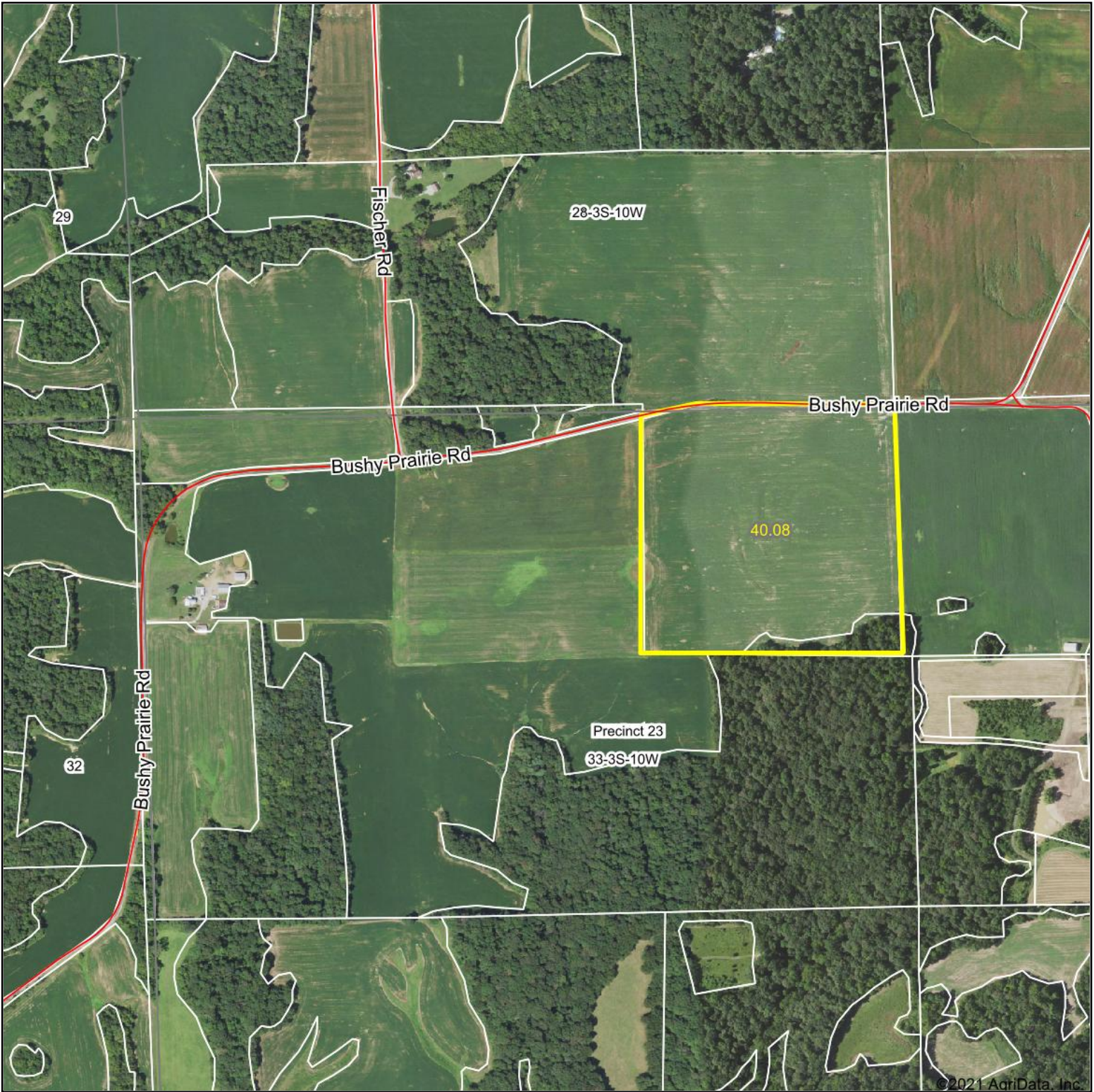
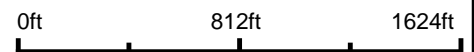


Aerial Map



Map Center: 38° 14' 12.65, -90° 12' 46.31



33-3S-10W
Monroe County
Illinois



9/22/2021

Maps Provided By:
 **surety**
CUSTOMIZED ONLINE MAPPING
© AgriData, Inc. 2021 www.AgriDataInc.com

Field borders provided by Farm Service Agency as of 5/21/2008.

Aerial Map



©2021 AgriData, Inc.

Map Center: 38° 14' 13.39, -90° 12' 32.93



33-3S-10W
Monroe County
Illinois

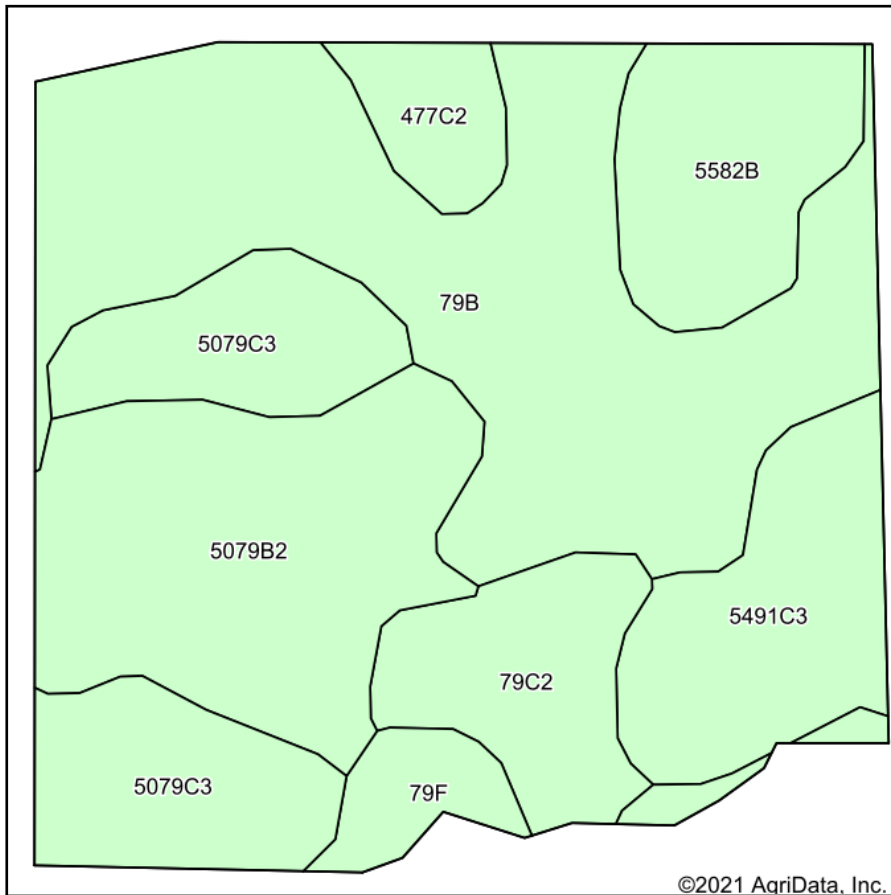


9/22/2021

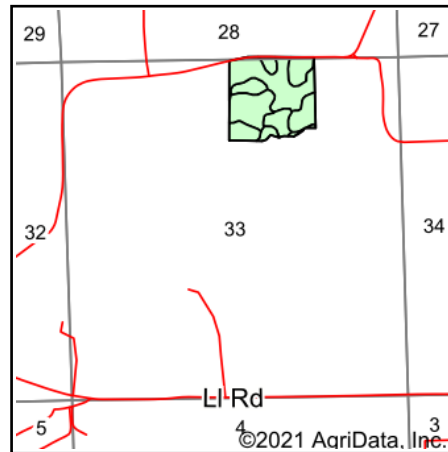
Maps Provided By:
 **surety**[®]
CUSTOMIZED ONLINE MAPPING
© AgriData, Inc. 2021 www.AgriDataInc.com

Field borders provided by Farm Service Agency as of 5/21/2008.

Soils Map



Soils data provided by USDA and NRCS.



State: **Illinois**
 County: **Monroe**
 Location: **33-3S-10W**
 Township: **Precinct 23**
 Acres: **38.08**
 Date: **9/22/2021**



Area Symbol: IL133, Soil Area Version: 13

Code	Soil Description	Acres	Percent of field	Corn Bu/A	Soybeans Bu/A	Wheat Bu/A	Grass-legume e hay, T/A	Crop productivity index for optimum management
**79B	Menfro silt loam, 2 to 5 percent slopes	13.14	34.5%	**163	**50	**62	0.00	**119
5079B2	Menfro silt loam, karst, 2 to 5 percent slopes, eroded	7.16	18.8%	165	51	63	0.00	120
5079C3	Menfro silt loam, karst, 5 to 12 percent slopes, severely eroded	5.16	13.6%	165	51	63	0.00	120
5491C3	Ruma silty clay loam, karst, 5 to 12 percent slopes, severely eroded	3.87	10.2%	162	48	60	0.00	116
5582B	Homen silt loam, karst, 2 to 5 percent slopes	3.26	8.6%	150	47	56	0.00	109
**79C2	Menfro silt loam, 5 to 10 percent slopes, eroded	2.87	7.5%	**153	**47	**59	0.00	**112
**79F	Menfro silt loam, 18 to 35 percent slopes	1.40	3.7%	**117	**36	**45	0.00	**85
**477C2	Winfield silt loam, 5 to 10 percent slopes, eroded	1.22	3.2%	**151	**47	**59	0.00	**111
Weighted Average				159.6	49	60.7	0.00	116.1

Table: Optimum Crop Productivity Ratings for Illinois Soil by K.R. Olson and J.M. Lang, Office of Research, ACES, University of Illinois at Champaign-Urbana. Version: 1/2/2012 Amended Table S2 B811

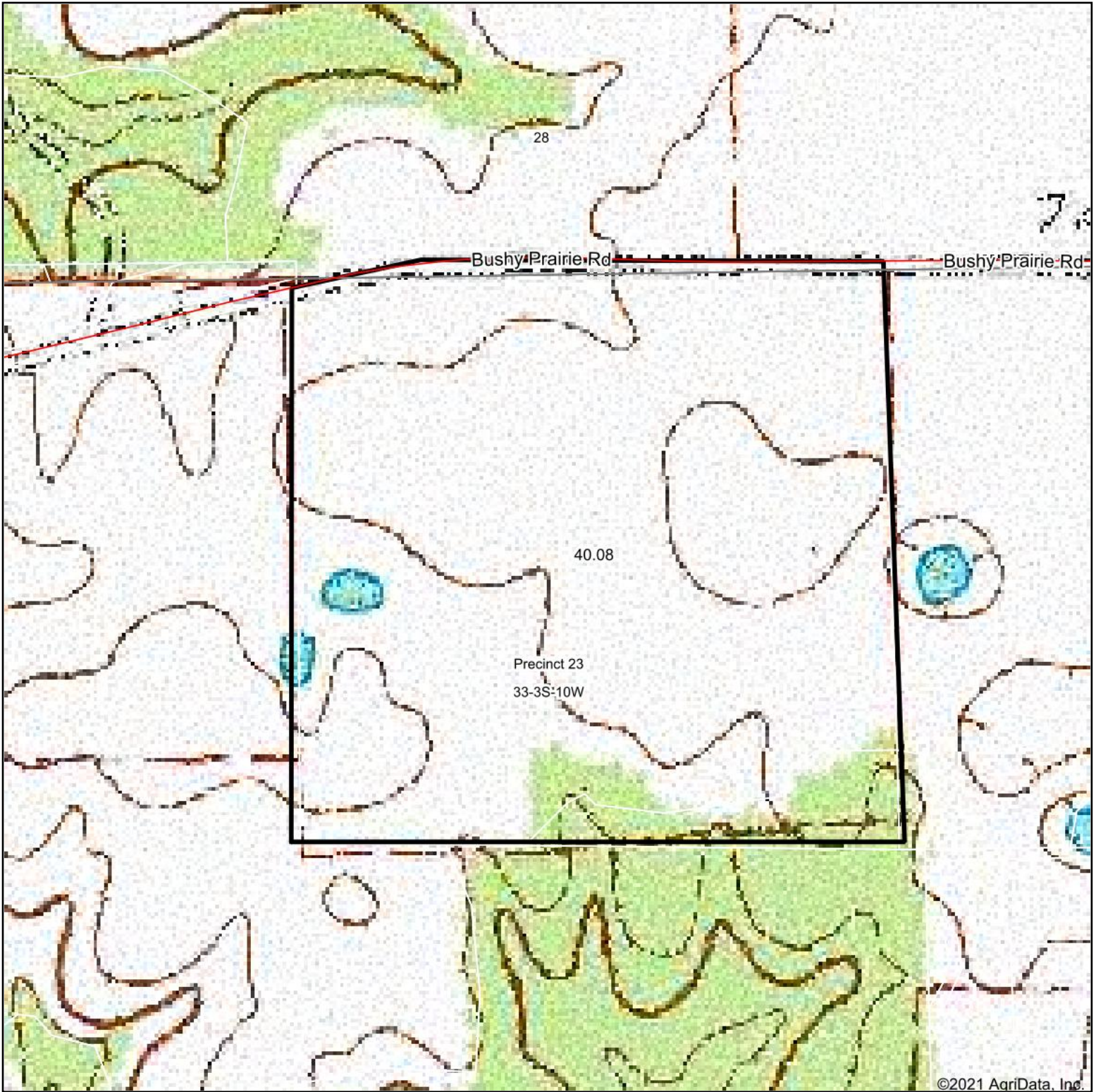
Crop yields and productivity indices for optimum management (B811) are maintained at the following NRES web site: <http://soilproductivity.nres.illinois.edu/>

** Indexes adjusted for slope and erosion according to Bulletin 811 Table S3

e Soils in the well drained group were not rated for grass-legume and are shown with a zero "0".

Soils data provided by USDA and NRCS. Soils data provided by University of Illinois at Champaign-Urbana.

Topography Map



©2021 AgriData, Inc.

map center: 38° 14' 13.39, -90° 12' 32.93



33-3S-10W
Monroe County
Illinois



9/22/2021



Maps Provided By:



© AgriData, Inc. 2021

www.AgriDataInc.com

Field borders provided by Farm Service Agency as of 5/21/2008.