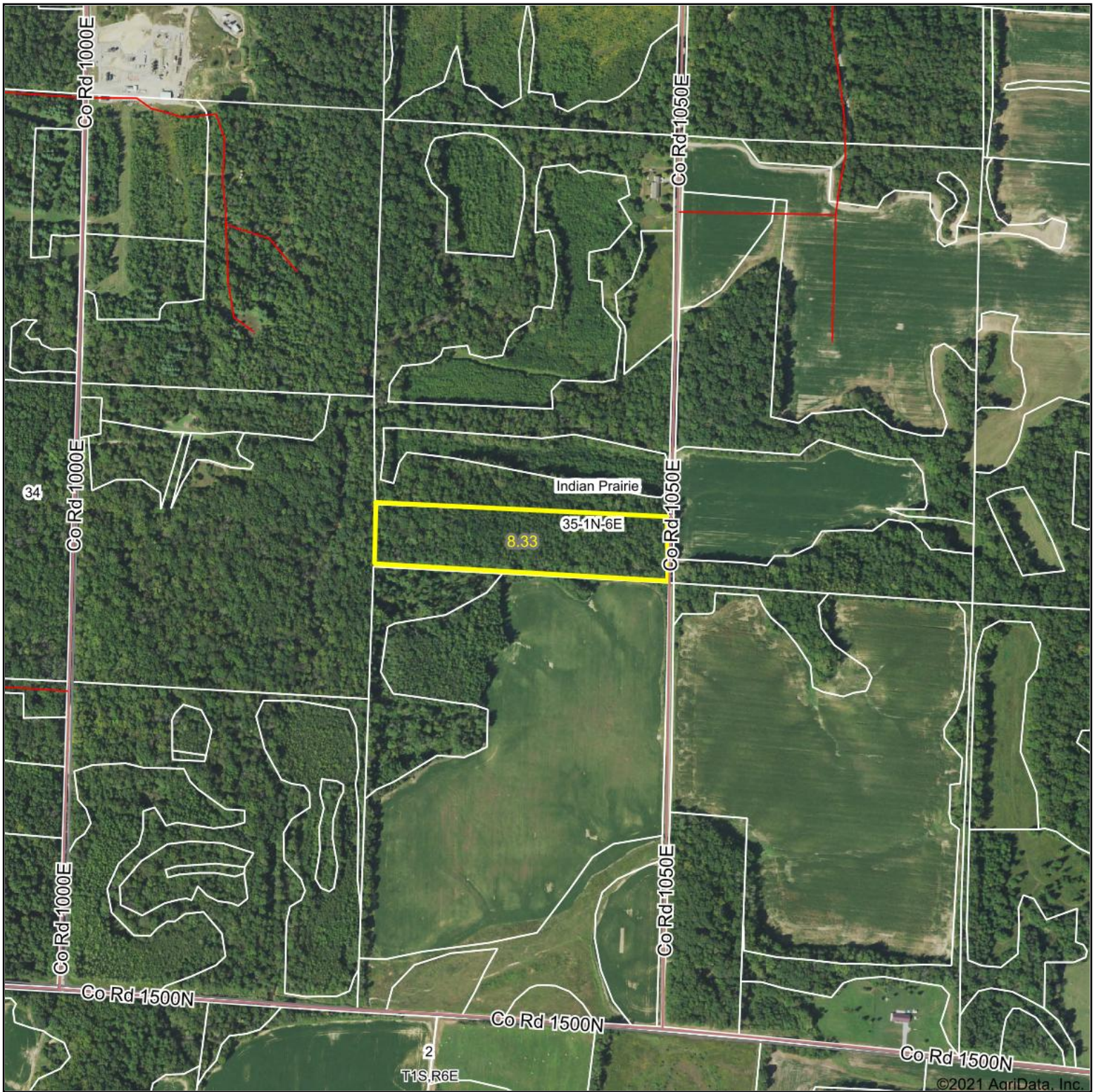


Aerial Map



Map Center: 38° 28' 44.26, -88° 30' 4.94

0ft 690ft 1381ft

35-1N-6E
Wayne County
Illinois



Maps Provided By:



© AgriData, Inc. 2021

www.AgriDataInc.com

Field borders provided by Farm Service Agency as of 5/21/2008.

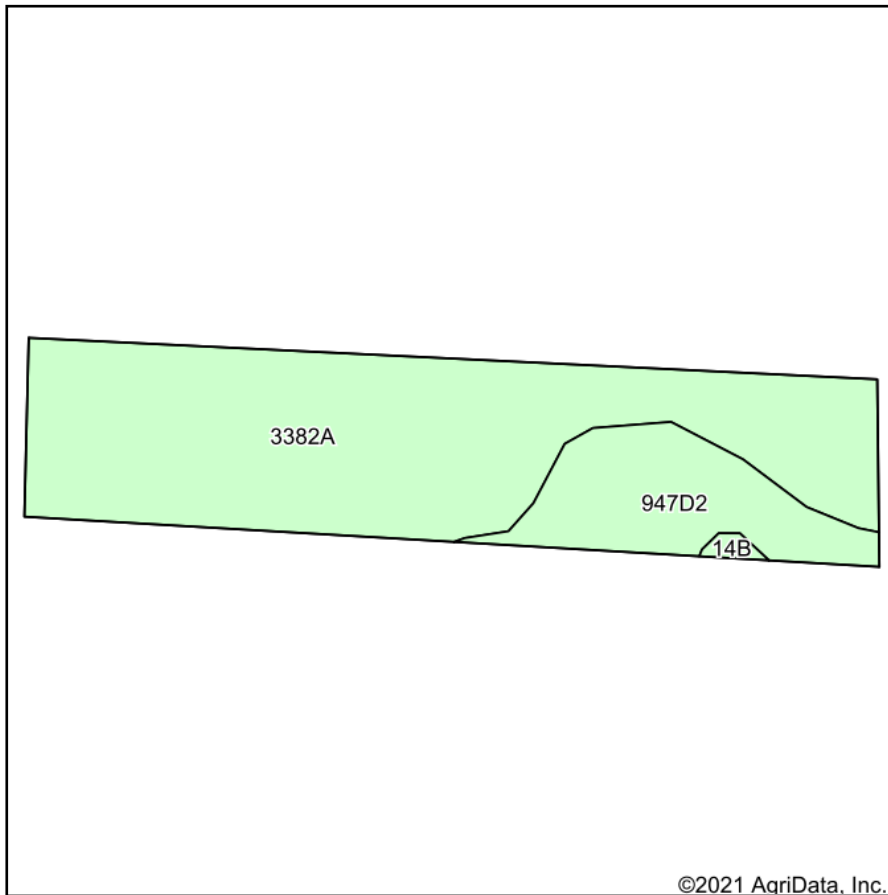


 Boundary

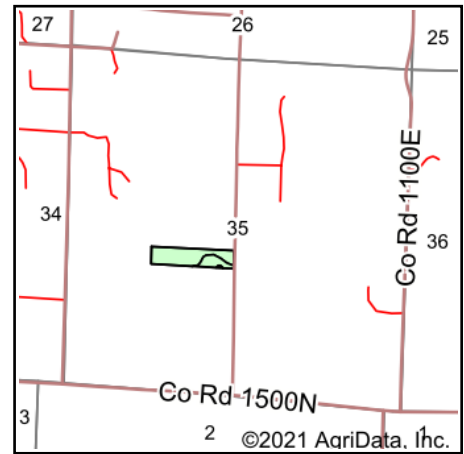


 Boundary

Soils Map



Soils data provided by USDA and NRCS.



State: **Illinois**
 County: **Wayne**
 Location: **35-1N-6E**
 Township: **Indian Prairie**
 Acres: **8.33**
 Date: **9/17/2021**



Maps Provided By:



© AgriData, Inc. 2021

www.AgriDataInc.com



Area Symbol: IL191, Soil Area Version: 18

| Code | Soil Description | Acres | Percent of field | Corn Bu/A | Soybeans Bu/A | Wheat Bu/A | Grass-legume e hay, T/A | Crop productivity index for optimum management |
|-------------------------|--|-------|------------------|--------------|---------------|-------------|-------------------------|--|
| 3382A | Belknap silt loam, 0 to 2 percent slopes, frequently flooded | 6.57 | 78.9% | 156 | 52 | 63 | 4.89 | 117 |
| **947D2 | Hickory-Passport silt loams, 10 to 18 percent slopes, eroded | 1.70 | 20.4% | **119 | **39 | **50 | **3.18 | **88 |
| **14B | Ava silt loam, 2 to 5 percent slopes | 0.06 | 0.7% | **134 | **44 | **54 | 0.00 | **99 |
| Weighted Average | | | | 148.3 | 49.3 | 60.3 | 4.51 | 111 |

Table: Optimum Crop Productivity Ratings for Illinois Soil by K.R. Olson and J.M. Lang, Office of Research, ACES, University of Illinois at Champaign-Urbana. Version: 1/2/2012 Amended Table S2 B811

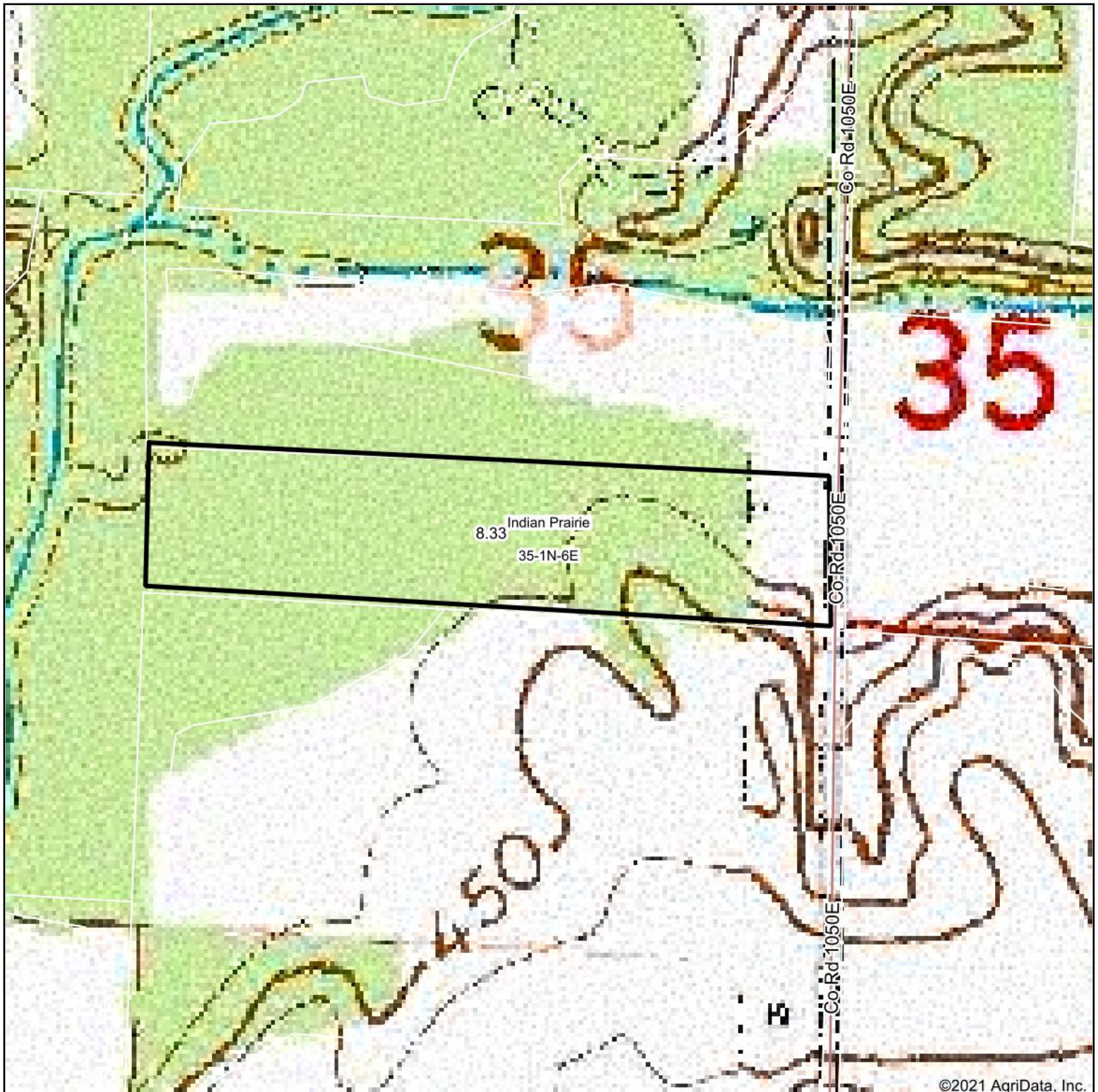
Crop yields and productivity indices for optimum management (B811) are maintained at the following NRES web site: <http://soilproductivity.nres.illinois.edu/>

** Indexes adjusted for slope and erosion according to Bulletin 811 Table S3

e Soils in the well drained group were not rated for grass-legume and are shown with a zero "0".

Soils data provided by USDA and NRCS. Soils data provided by University of Illinois at Champaign-Urbana.

Topography Map



©2021 AgriData, Inc.

map center: 38° 28' 44.26, -88° 30' 4.94

0ft 296ft 592ft



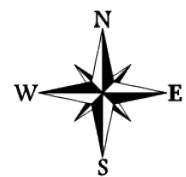
Maps Provided By:



© AgriData, Inc. 2021

www.AgriDataInc.com

35-1N-6E
Wayne County
Illinois



9/17/2021

Field borders provided by Farm Service Agency as of 5/21/2008.

Topography Hillshade



©2021 AgriData, Inc.



Source: USGS 10 meter dem

Interval(ft): 2

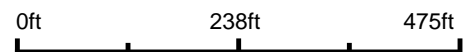
Min: 430.9

Max: 453.0

Range: 22.1

Average: 434.9

Standard Deviation: 3.94 ft



9/17/2021

35-1N-6E
Wayne County
Illinois

map center: 38° 28' 44.26, -88° 30' 4.94



Maps Provided By:



© AgriData, Inc. 2021

www.AgriDataInc.com

Field borders provided by Farm Service Agency as of 5/21/2008.