

Aerial Map



©2021 AgriData, Inc.

Map Center: 37° 52' 57.18, -89° 24' 28.14



Maps Provided By:



© AgriData, Inc. 2021

www.AgriDataInc.com

26-7S-3W
Jackson County
Illinois



9/22/2021

Field borders provided by Farm Service Agency as of 5/21/2008.



United States
Department of
Agriculture

Jackson County, Illinois






Common Land Unit  CRP
 Non-Cropland
 Cropland
Tract Boundary
p1ss_a_il

0 170 340 680
Feet

2022 Program Year
Map Created September 10, 2021

Wetland Determination

-  Restricted Use
-  Limited Restrictions
-  Exempt from Conservation Compliance Provisions

Tract Cropland Total: 32.55 acres

Farm 5018
Tract 1003

United States Department of Agriculture (USDA) Farm Service Agency (FSA) maps are for FSA Program administration only. This map does not represent a legal survey or reflect actual ownership; rather it depicts the information provided directly from the producer and/or National Agricultural Imagery Program (NAIP) imagery. The producer accepts the data 'as is' and assumes all risks associated with its use. USDA-FSA assumes no responsibility for actual or consequential damage incurred as a result of any user's reliance on this data outside FSA Programs. Wetland identifiers do not represent the size, shape, or specific determination of the area. Refer to your original determination (CPA-026 and attached maps) for exact boundaries and determinations or contact USDA Natural Resources Conservation Service (NRCS).



United States
Department of
Agriculture

Jackson County, Illinois



Common Land Unit

- Non-Cropland
- Cropland

Tract Boundary
plss_a_il

0 170 340 680
Feet

2022 Program Year

Map Created September 10, 2021

Wetland Determination

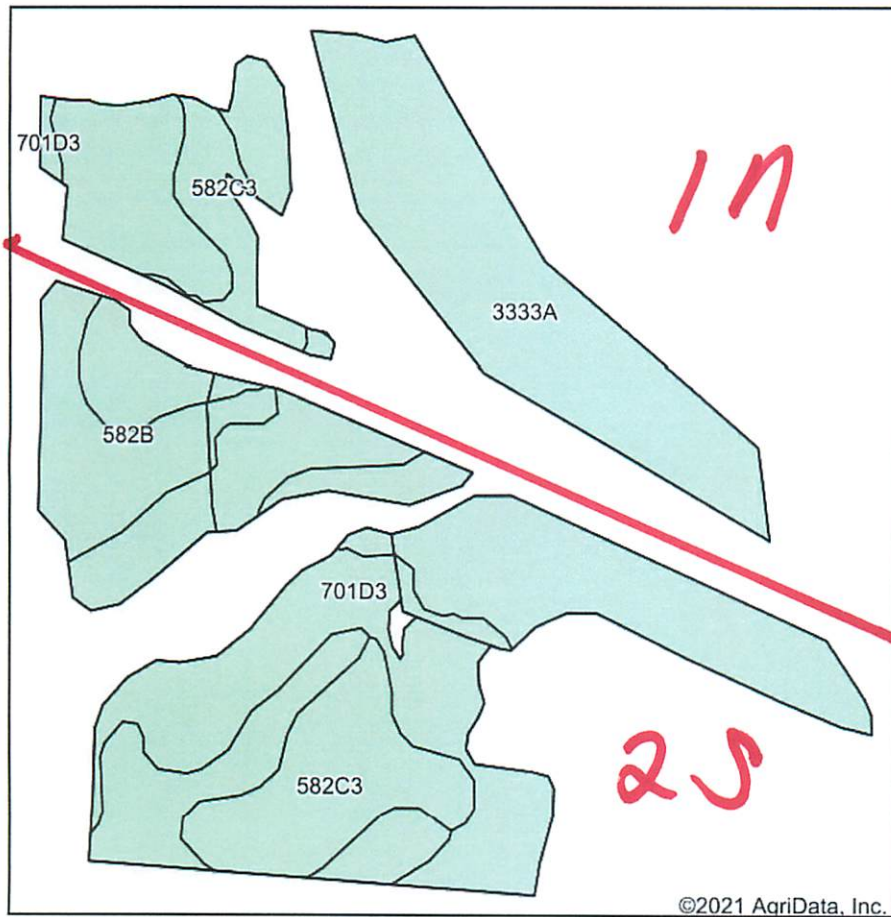
- Restricted Use
- Limited Restrictions
- Exempt from Conservation Compliance Provisions

Tract Cropland Total: 48.17 acres

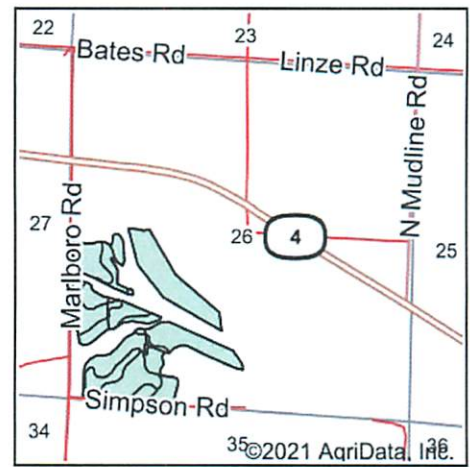
Farm 3349
Tract 10230

United States Department of Agriculture (USDA) Farm Service Agency (FSA) maps are for FSA Program administration only. This map does not represent a legal survey or reflect actual ownership; rather it depicts the information provided directly from the producer and/or National Agricultural Imagery Program (NAIP) imagery. The producer accepts the data 'as is' and assumes all risks associated with its use. USDA-FSA assumes no responsibility for actual or consequential damage incurred as a result of any user's reliance on this data outside FSA Programs. Wetland identifiers do not represent the size, shape, or specific determination of the area. Refer to your original determination (CPA-026 and attached maps) for exact boundaries and determinations or contact USDA Natural Resources Conservation Service (NRCS).

Soils Map



Soils data provided by USDA and NRCS.



State: Illinois
County: Jackson
Location: 26-7S-3W
Township: Ora
Acres: 73.11
Date: 9/22/2021



Maps Provided By:



Area Symbol: IL077, Soil Area Version: 20

Code	Soil Description	Acres	Percent of field	Corn Bu/A	Soybeans Bu/A	Wheat Bu/A	Grass-legume e hay, T/A	Crop productivity index for optimum management
3333A	Wakeland silt loam, 0 to 2 percent slopes, frequently flooded	27.54	37.7%	174	56	68	5.14	128
**701D3	Menfro-Hickory complex, 10 to 18 percent slopes, severely eroded	16.76	22.9%	**120	**39	**47	0.00	**89
**582B	Homen silt loam, 2 to 5 percent slopes	16.58	22.7%	**149	**47	**55	0.00	**108
**582C3	Homen silty clay loam, 5 to 10 percent slopes, severely eroded	12.23	16.7%	**129	**40	**48	0.00	**94
Weighted Average				148.4	47.4	56.9	1.94	108.8

Table: Optimum Crop Productivity Ratings for Illinois Soil by K.R. Olson and J.M. Lang, Office of Research, ACES, University of Illinois at Champaign-Urbana. Version: 1/2/2012 Amended Table S2 B811

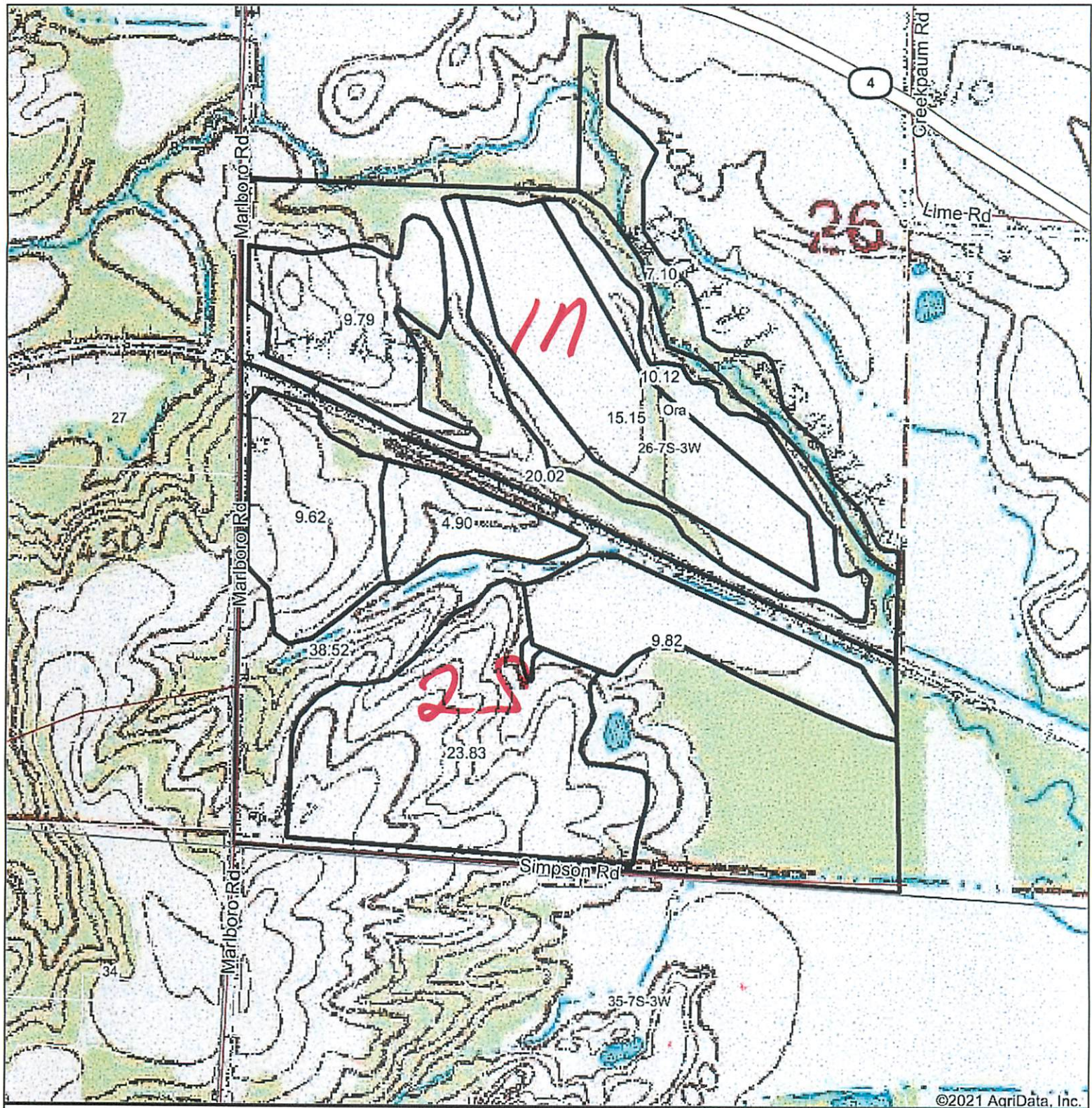
Crop yields and productivity indices for optimum management (B811) are maintained at the following NRES web site: <http://soilproductivity.nres.illinois.edu/>

** Indexes adjusted for slope and erosion according to Bulletin 811 Table S3

e Soils in the well drained group were not rated for grass-legume and are shown with a zero "0".

Soils data provided by USDA and NRCS. Soils data provided by University of Illinois at Champaign-Urbana.

Topography Map



©2021 AgriData, Inc.

map center: 37° 52' 56.06, -89° 24' 30.15

0ft 627ft 1254ft

26-7S-3W
Jackson County
Illinois



9/22/2021



Maps Provided By:



© AgriData, Inc. 2021

www.AgridataInc.com