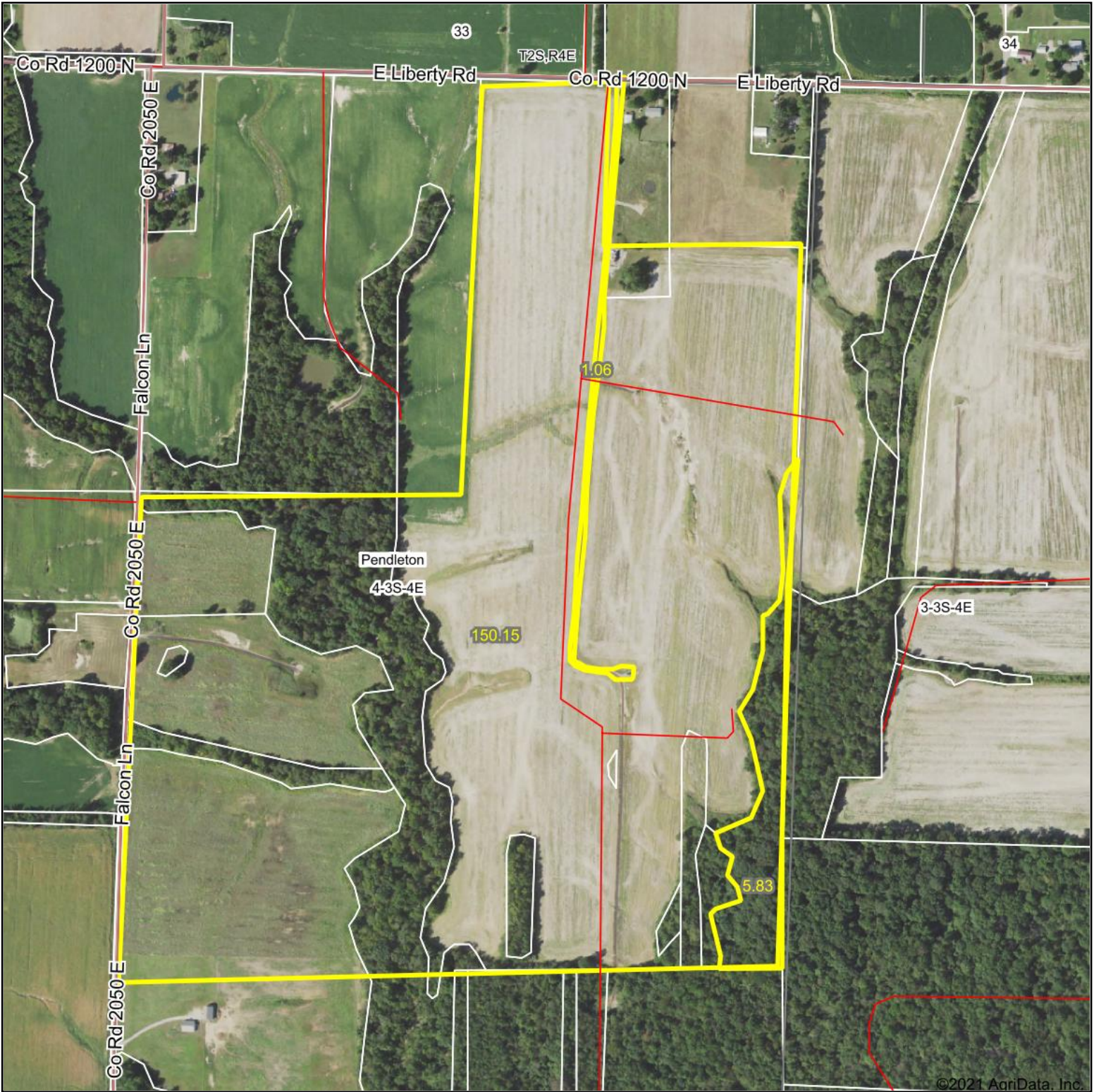
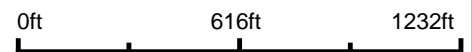


Aerial Map



©2021 AgriData, Inc.

Map Center: 38° 17' 37.4, -88° 45' 42.2



4-3S-4E
Jefferson County
Illinois

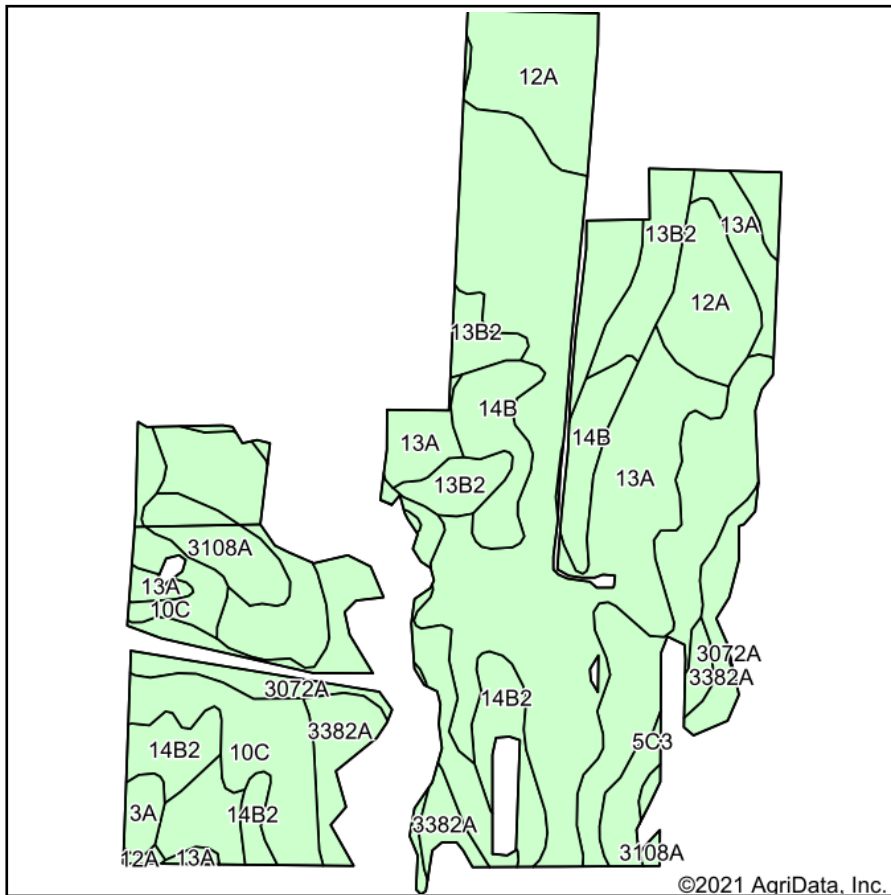


9/17/2021

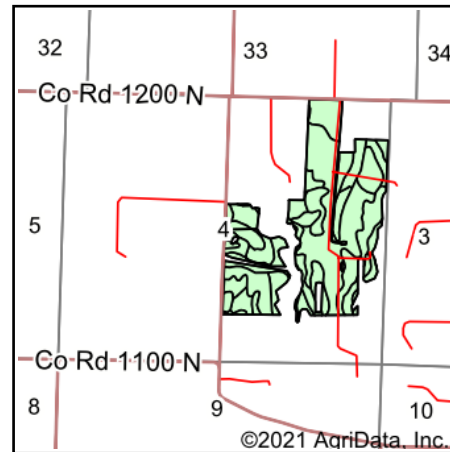
Maps Provided By:
 **surety**
CUSTOMIZED ONLINE MAPPING
© AgriData, Inc. 2021 www.AgriDataInc.com

Field borders provided by Farm Service Agency as of 5/21/2008.

Soils Map



Soils data provided by USDA and NRCS.



State: **Illinois**
 County: **Jefferson**
 Location: **4-3S-4E**
 Township: **Pendleton**
 Acres: **119.8**
 Date: **9/17/2021**



Maps Provided By:



Area Symbol: IL081, Soil Area Version: 13

Code	Soil Description	Acres	Percent of field	Corn Bu/A	Soybeans Bu/A	Wheat Bu/A	Grass-legume e hay, T/A	Crop productivity index for optimum management
13A	Bluford silt loam, 0 to 2 percent slopes	40.52	33.8%	136	44	55	3.39	101
**13B2	Bluford silt loam, 2 to 5 percent slopes, eroded	19.68	16.4%	**129	**42	**52	**3.22	**96
3382A	Belknap silt loam, 0 to 2 percent slopes, frequently flooded	12.40	10.4%	156	52	63	4.89	117
12A	Wynoose silt loam, 0 to 2 percent slopes	11.08	9.2%	128	42	51	4.26	97
**10C	Plumfield silty clay loam, 5 to 10 percent slopes	8.98	7.5%	**103	**34	**39	**3.37	**78
**14B	Ava silt loam, 2 to 5 percent slopes	6.34	5.3%	**134	**44	**54	0.00	**99
**14B2	Ava silt loam, 2 to 5 percent slopes, eroded	5.91	4.9%	**126	**41	**51	0.00	**93
**5C3	Blair silty clay loam, 5 to 10 percent slopes, severely eroded	5.64	4.7%	**102	**33	**41	**3.25	**77
3072A	Sharon silt loam, 0 to 2 percent slopes, frequently flooded	4.86	4.1%	164	53	63	0.00	122
3108A	Bonnie silt loam, 0 to 2 percent slopes, frequently flooded	3.34	2.8%	149	49	59	4.64	111
3A	Hoyleton silt loam, 0 to 2 percent slopes	1.05	0.9%	146	46	58	4.64	108
Weighted Average				133.1	43.4	53.3	3.15	99.3

Table: Optimum Crop Productivity Ratings for Illinois Soil by K.R. Olson and J.M. Lang, Office of Research, ACES, University of Illinois at Champaign-Urbana. Version: 1/2/2012 Amended Table S2 B811

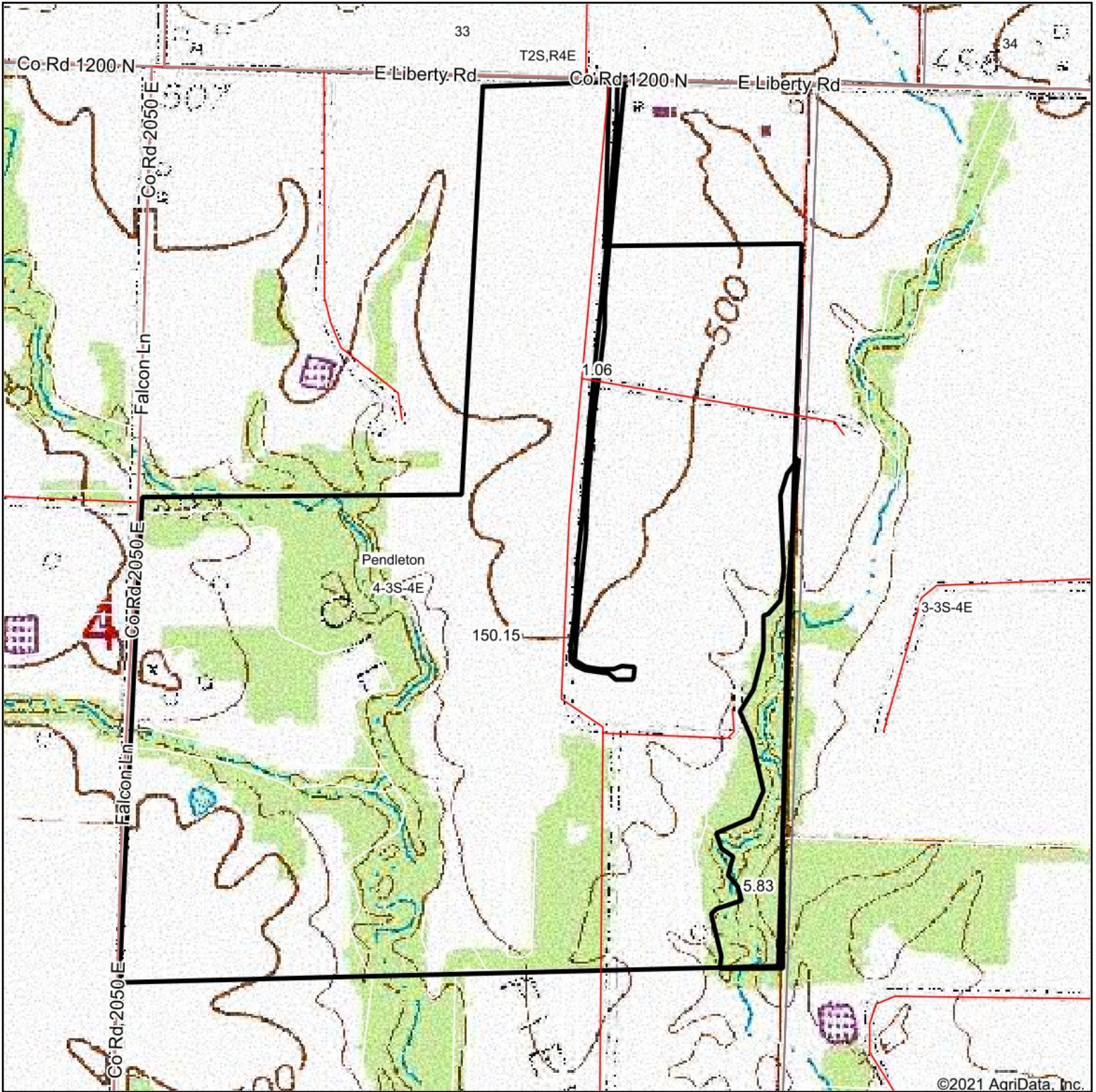
Crop yields and productivity indices for optimum management (B811) are maintained at the following NRES web site: <http://soilproductivity.nres.illinois.edu/>

** Indexes adjusted for slope and erosion according to Bulletin 811 Table S3

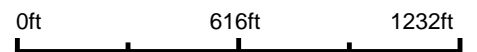
e Soils in the well drained group were not rated for grass-legume and are shown with a zero "0".

Soils data provided by USDA and NRCS. Soils data provided by University of Illinois at Champaign-Urbana.

Topography Map



map center: 38° 17' 37.4, -88° 45' 42.2



4-3S-4E
Jefferson County
Illinois



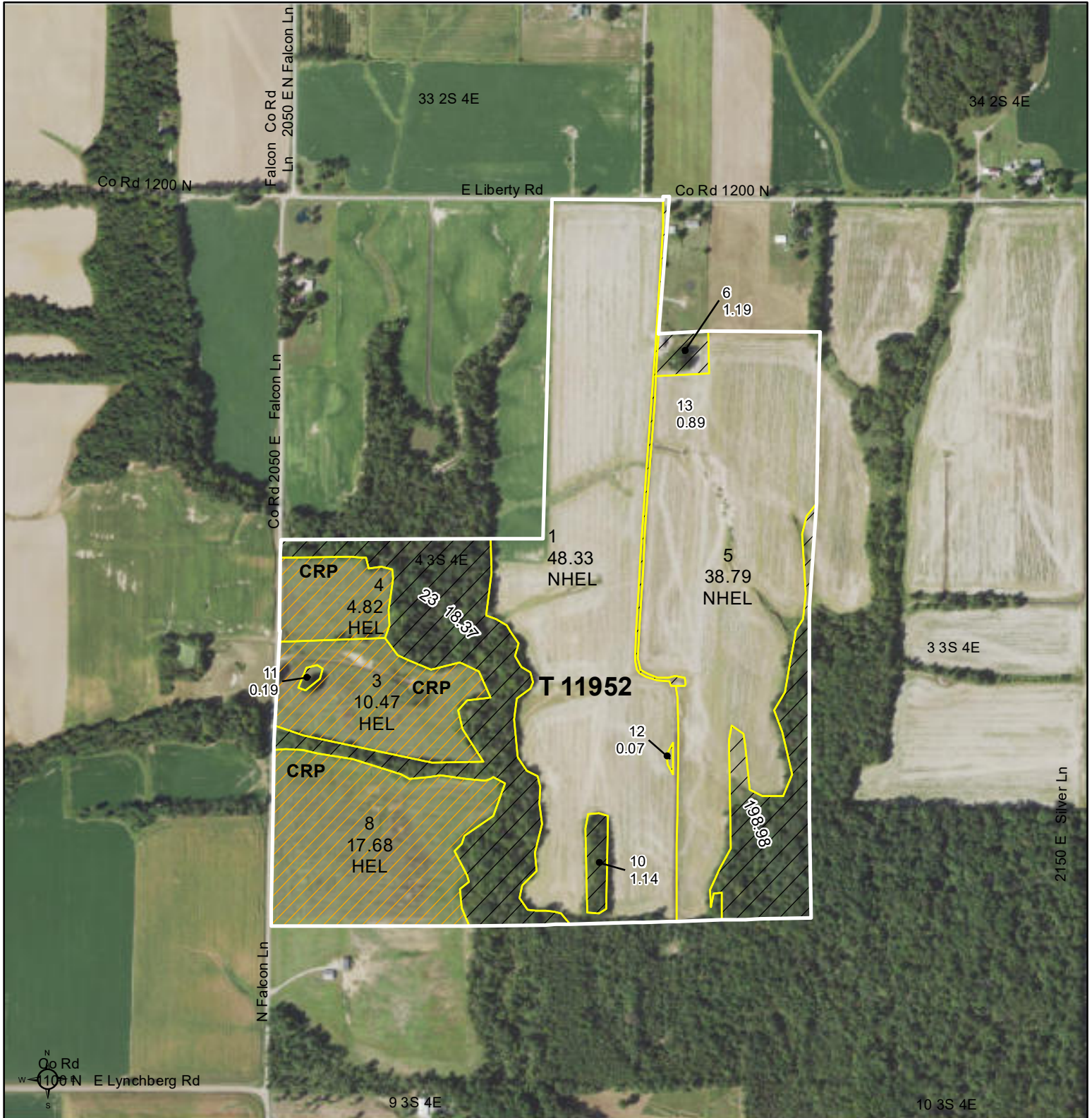
9/17/2021



Maps Provided By:



© AgriData, Inc. 2021 www.AgridataInc.com

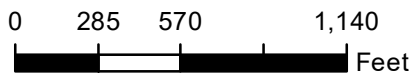


Common Land Unit

- CRP
- Non-Cropland
- Cropland
- Tract Boundary
- p1ss_a_il_WMAS

Wetland Determination Identifiers

- Restricted Use
- Limited Restrictions
- Exempt from Conservation Compliance Provisions



ALL CROPLAND NI
 ALL WHT=SRW/GR
 ALL CORN=YEL/GR
 ALL SYBN=COM/GR
 UNLESS OTHERWISE NOTED

Tract Cropland Total: 120.09 acres

2021 Program Year
 Map Created September 23, 2020

Farm 10195
Tract 11952

IL081_T11952

United States Department of Agriculture (USDA) Farm Service Agency (FSA) maps are for FSA Program administration only. This map does not represent a legal survey or reflect actual ownership; rather it depicts the information provided directly from the producer and/or National Agricultural Imagery Program (NAIP) imagery. The producer accepts the data 'as is' and assumes all risks associated with its use. USDA-FSA assumes no responsibility for actual or consequential damage incurred as a result of any user's reliance on this data outside FSA Programs. Wetland identifiers do not represent the size, shape, or specific determination of the area. Refer to your original determination (CPA-026 and attached maps) for exact boundaries and determinations or contact USDA Natural Resources Conservation Service (NRCS).