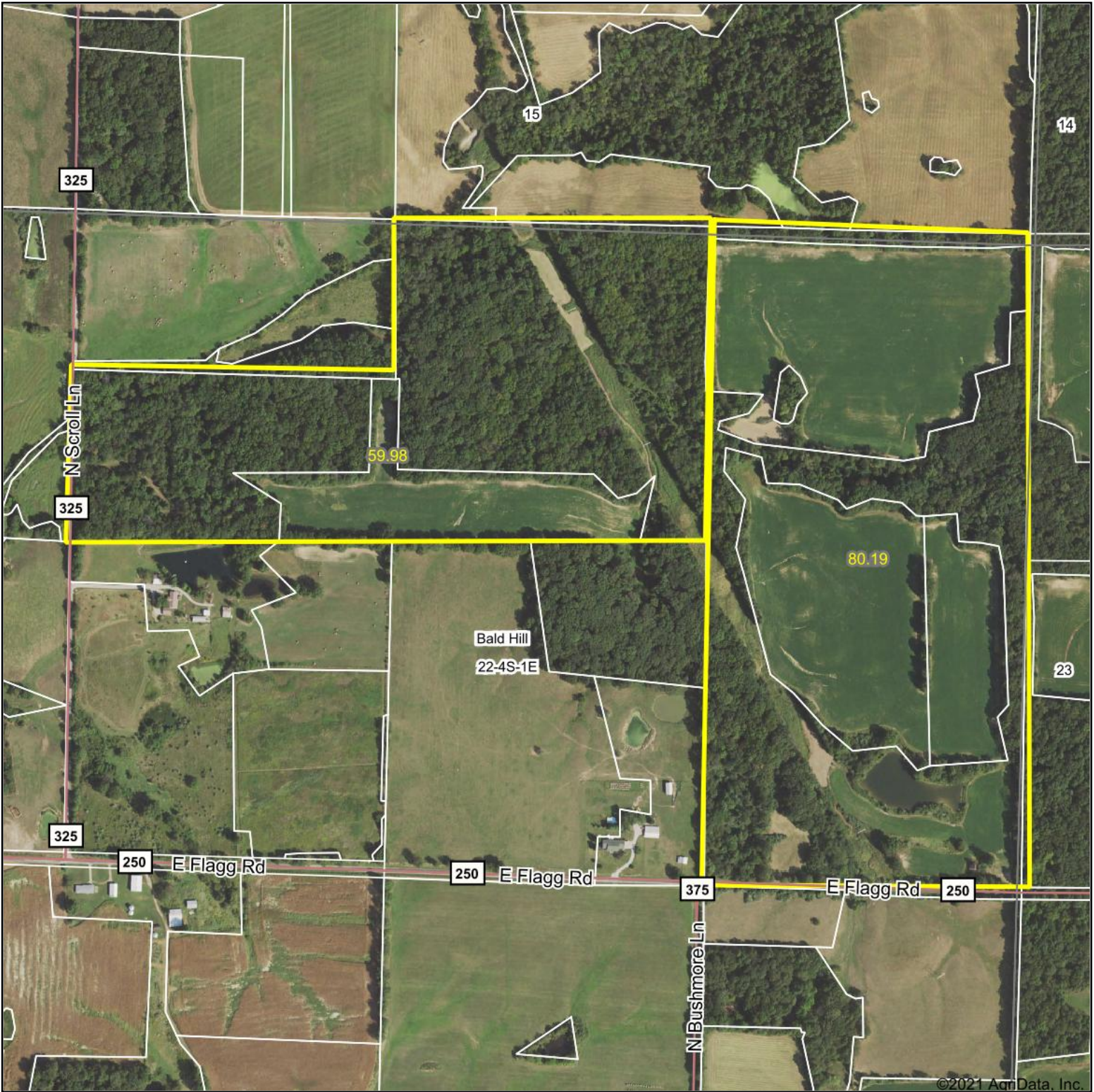
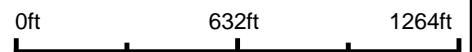


# Aerial Map



©2021 AgriData, Inc.

Map Center: 38° 9' 52.7, -89° 5' 1.99



**22-4S-1E**  
**Jefferson County**  
**Illinois**



10/9/2021



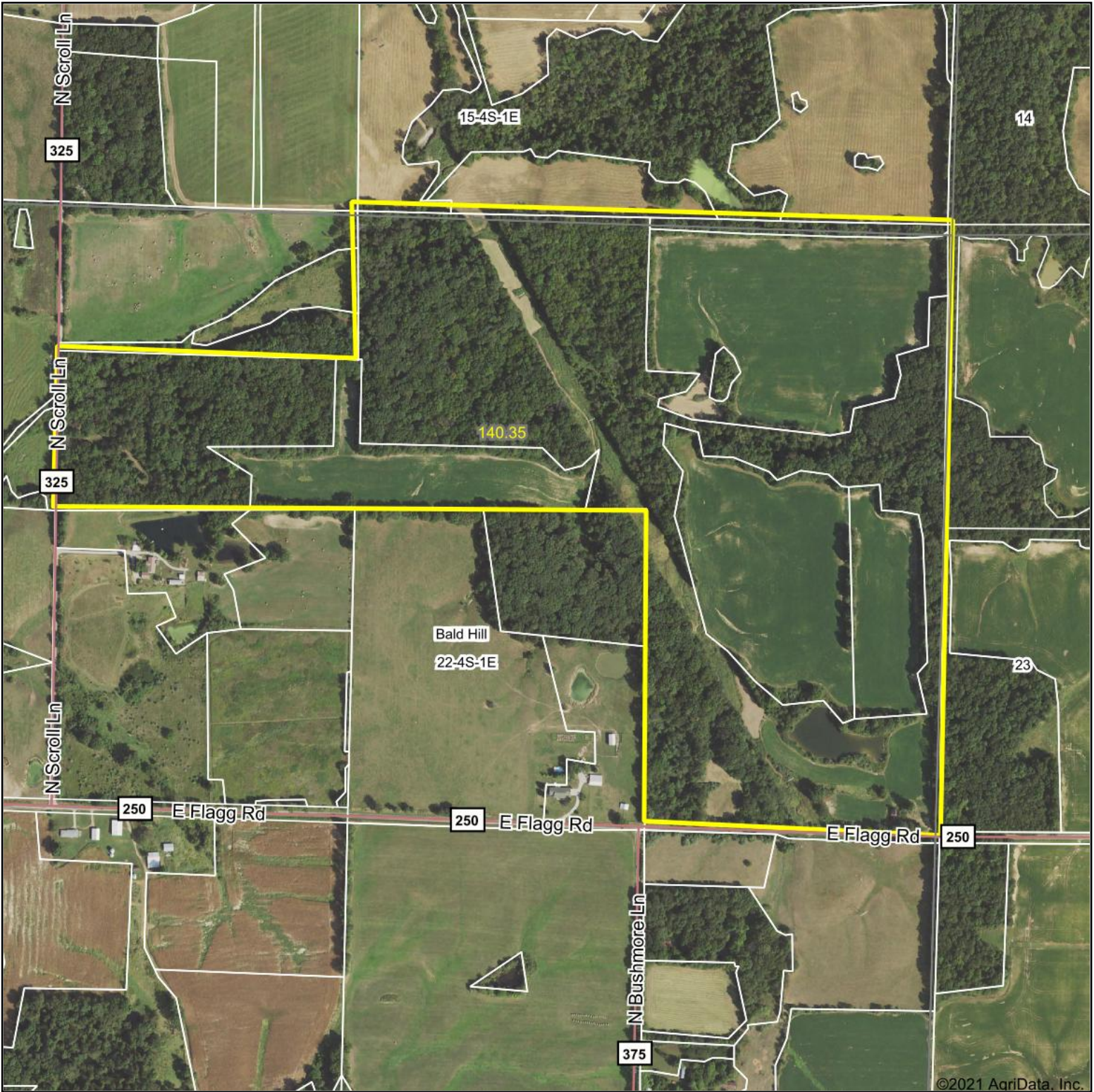
Maps Provided By:



© AgriData, Inc. 2021 www.AgriDataInc.com

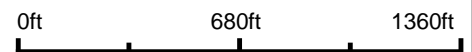
Field borders provided by Farm Service Agency as of 5/21/2008.

# Aerial Map



©2021 AgriData, Inc.

Map Center: 38° 9' 51.39, -89° 4' 59.31



**22-4S-1E**  
**Jefferson County**  
**Illinois**



9/22/2021



Maps Provided By:

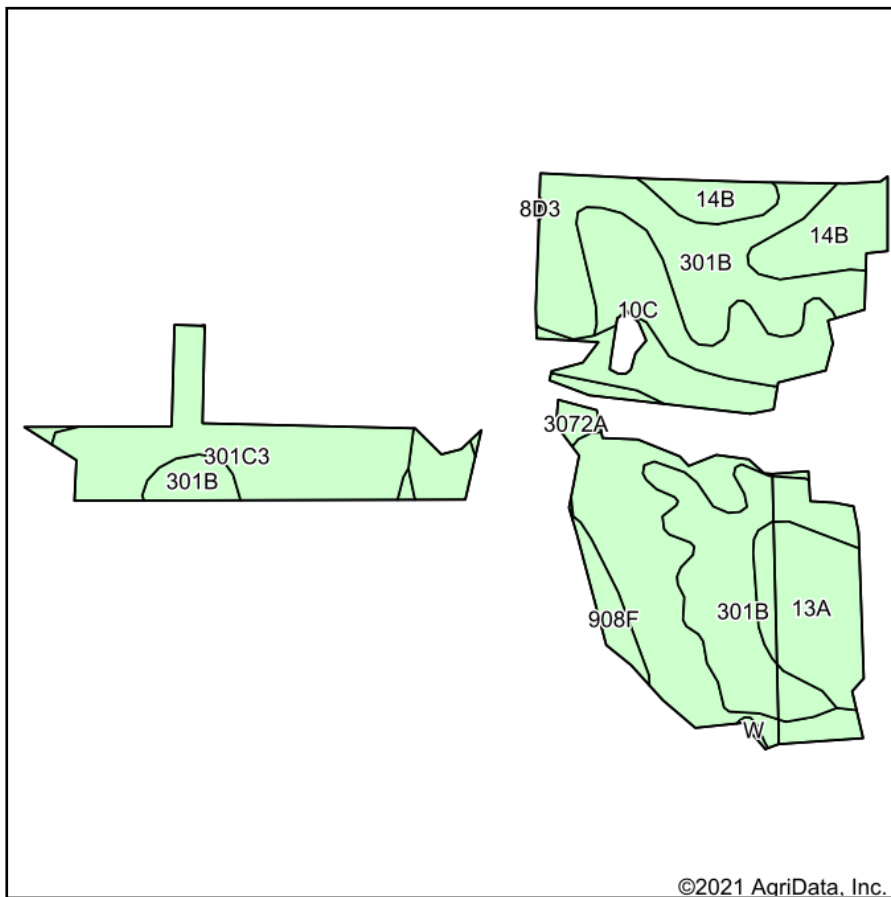


© AgriData, Inc. 2021 www.AgriDataInc.com

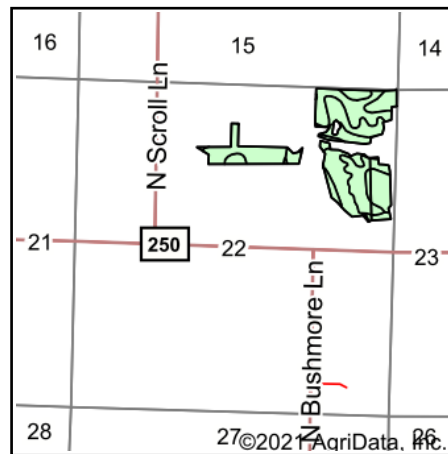
Field borders provided by Farm Service Agency as of 5/21/2008.



# Soils Map



Soils data provided by USDA and NRCS.



State: **Illinois**  
 County: **Jefferson**  
 Location: **22-4S-1E**  
 Township: **Bald Hill**  
 Acres: **54.71**  
 Date: **9/22/2021**



Maps Provided By:



© AgriData, Inc. 2021

www.AgriDataInc.com



Area Symbol: IL081, Soil Area Version: 13

| Code                    | Soil Description   | Acres | Percent of field | Corn Bu/A  | Soybeans Bu/A | Wheat Bu/A  | Grass-legume e hay, T/A | Crop productivity index for optimum management |
|-------------------------|--|-------|------------------|------------|---------------|-------------|-------------------------|--|
| **301B                  | Grantsburg silt loam, 2 to 5 percent slopes                                | 17.34 | 31.7%            | **133      | **46          | **54        | 0.00                    | **101  |
| **340D3                 | Zanesville silt loam, till plain, 10 to 18 percent slopes, severely eroded | 11.29 | 20.6%            | **86       | **30          | **37        | **2.68                  | **65   |
| **301C3                 | Grantsburg silty clay loam, 5 to 10 percent slopes, severely eroded        | 7.99  | 14.6%            | **99       | **34          | **41        | 0.00                    | **75   |
| **10C                   | Plumfield silty clay loam, 5 to 10 percent slopes                          | 5.52  | 10.1%            | **103      | **34          | **39        | **3.37                  | **78   |
| 13A                     | Bluford silt loam, 0 to 2 percent slopes                                   | 5.08  | 9.3%             | 136        | 44            | 55          | 3.39                    | 101  |
| **14B                   | Ava silt loam, 2 to 5 percent slopes                                       | 4.27  | 7.8%             | **134      | **44          | **54        | 0.00                    | **99   |
| **908F                  | Hickory-Kell silt loams, 18 to 35 percent slopes                           | 2.27  | 4.1%             | **87       | **29          | **34        | **2.81                  | **67   |
| 3072A                   | Sharon silt loam, 0 to 2 percent slopes, frequently flooded                | 0.86  | 1.6%             | 164        | 53            | 63          | 0.00                    | 122  |
| W                       | Water  | 0.09  | 0.2%             |            |               |             |                         |  |
| <b>Weighted Average</b> |  |       |                  | <b>114</b> | <b>38.7</b>   | <b>46.4</b> | <b>1.32</b>             | <b>86.1</b>                                    |

**Table: Optimum Crop Productivity Ratings for Illinois Soil by K.R. Olson and J.M. Lang, Office of Research, ACES, University of Illinois at Champaign-Urbana.** Version: 1/2/2012 Amended Table S2 B811

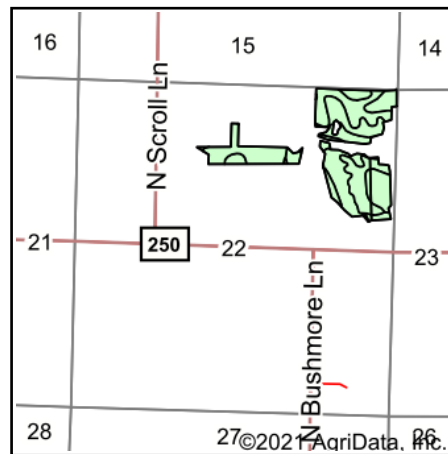
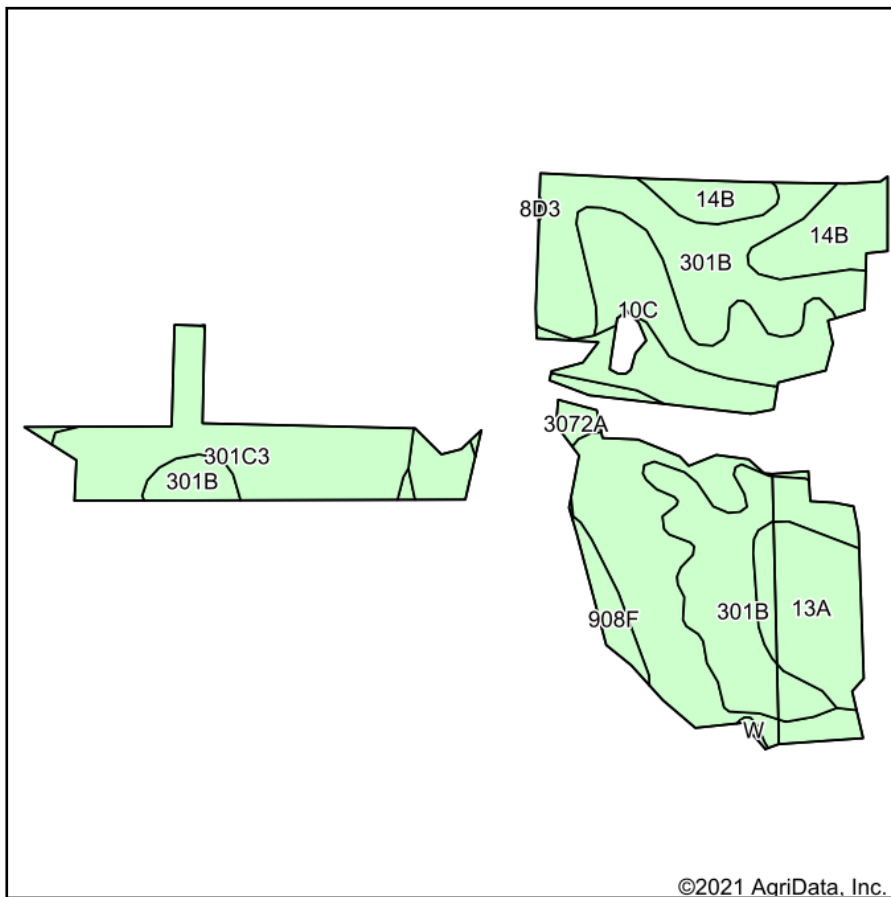
Crop yields and productivity indices for optimum management (B811) are maintained at the following NRES web site: <http://soilproductivity.nres.illinois.edu/>

\*\* Indexes adjusted for slope and erosion according to Bulletin 811 Table S3

e Soils in the well drained group were not rated for grass-legume and are shown with a zero "0".

Soils data provided by USDA and NRCS. Soils data provided by University of Illinois at Champaign-Urbana.

# Soils Map



State: **Illinois**  
 County: **Jefferson**  
 Location: **22-4S-1E**  
 Township: **Bald Hill**  
 Acres: **54.71**  
 Date: **10/9/2021**



Soils data provided by USDA and NRCS.

Area Symbol: IL081, Soil Area Version: 13

| Code                    | Soil Description   | Acres | Percent of field | Corn Bu/A  | Soybeans Bu/A | Wheat Bu/A  | Grass-legume e hay, T/A | Crop productivity index for optimum management |
|-------------------------|--|-------|------------------|------------|---------------|-------------|-------------------------|--|
| **301B                  | Grantsburg silt loam, 2 to 5 percent slopes                                | 17.34 | 31.7%            | **133      | **46          | **54        | 0.00                    | **101  |
| **340D3                 | Zanesville silt loam, till plain, 10 to 18 percent slopes, severely eroded | 11.29 | 20.6%            | **86       | **30          | **37        | **2.68                  | **65   |
| **301C3                 | Grantsburg silty clay loam, 5 to 10 percent slopes, severely eroded        | 7.99  | 14.6%            | **99       | **34          | **41        | 0.00                    | **75   |
| **10C                   | Plumfield silty clay loam, 5 to 10 percent slopes                          | 5.52  | 10.1%            | **103      | **34          | **39        | **3.37                  | **78   |
| 13A                     | Bluford silt loam, 0 to 2 percent slopes                                   | 5.08  | 9.3%             | 136        | 44            | 55          | 3.39                    | 101  |
| **14B                   | Ava silt loam, 2 to 5 percent slopes                                       | 4.27  | 7.8%             | **134      | **44          | **54        | 0.00                    | **99   |
| **908F                  | Hickory-Kell silt loams, 18 to 35 percent slopes                           | 2.27  | 4.1%             | **87       | **29          | **34        | **2.81                  | **67   |
| 3072A                   | Sharon silt loam, 0 to 2 percent slopes, frequently flooded                | 0.86  | 1.6%             | 164        | 53            | 63          | 0.00                    | 122  |
| W                       | Water  | 0.09  | 0.2%             |            |               |             |                         |  |
| <b>Weighted Average</b> |  |       |                  | <b>114</b> | <b>38.7</b>   | <b>46.4</b> | <b>1.32</b>             | <b>86.1</b>                                    |

**Table: Optimum Crop Productivity Ratings for Illinois Soil by K.R. Olson and J.M. Lang, Office of Research, ACES, University of Illinois at Champaign-Urbana.** Version: 1/2/2012 Amended Table S2 B811

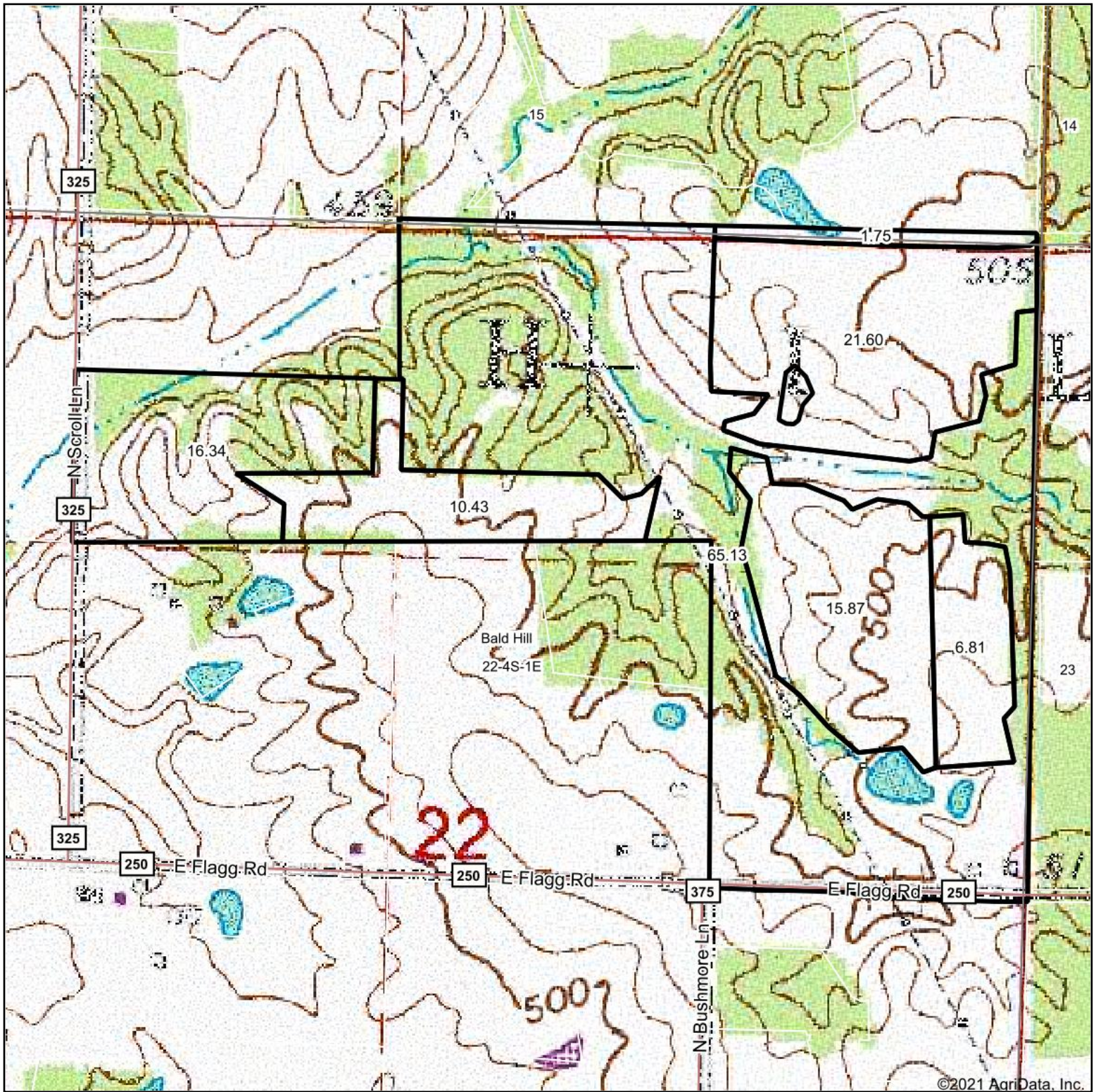
Crop yields and productivity indices for optimum management (B811) are maintained at the following NRES web site: <http://soilproductivity.nres.illinois.edu/>

\*\* Indexes adjusted for slope and erosion according to Bulletin 811 Table S3

e Soils in the well drained group were not rated for grass-legume and are shown with a zero "0".

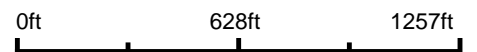
Soils data provided by USDA and NRCS. Soils data provided by University of Illinois at Champaign-Urbana.

# Topography Map



©2021 AgriData, Inc.

map center: 38° 9' 52.7, -89° 5' 2.14



**22-4S-1E**  
**Jefferson County**  
**Illinois**



10/9/2021



Maps Provided By:



© AgriData, Inc. 2021 www.AgriDataInc.com