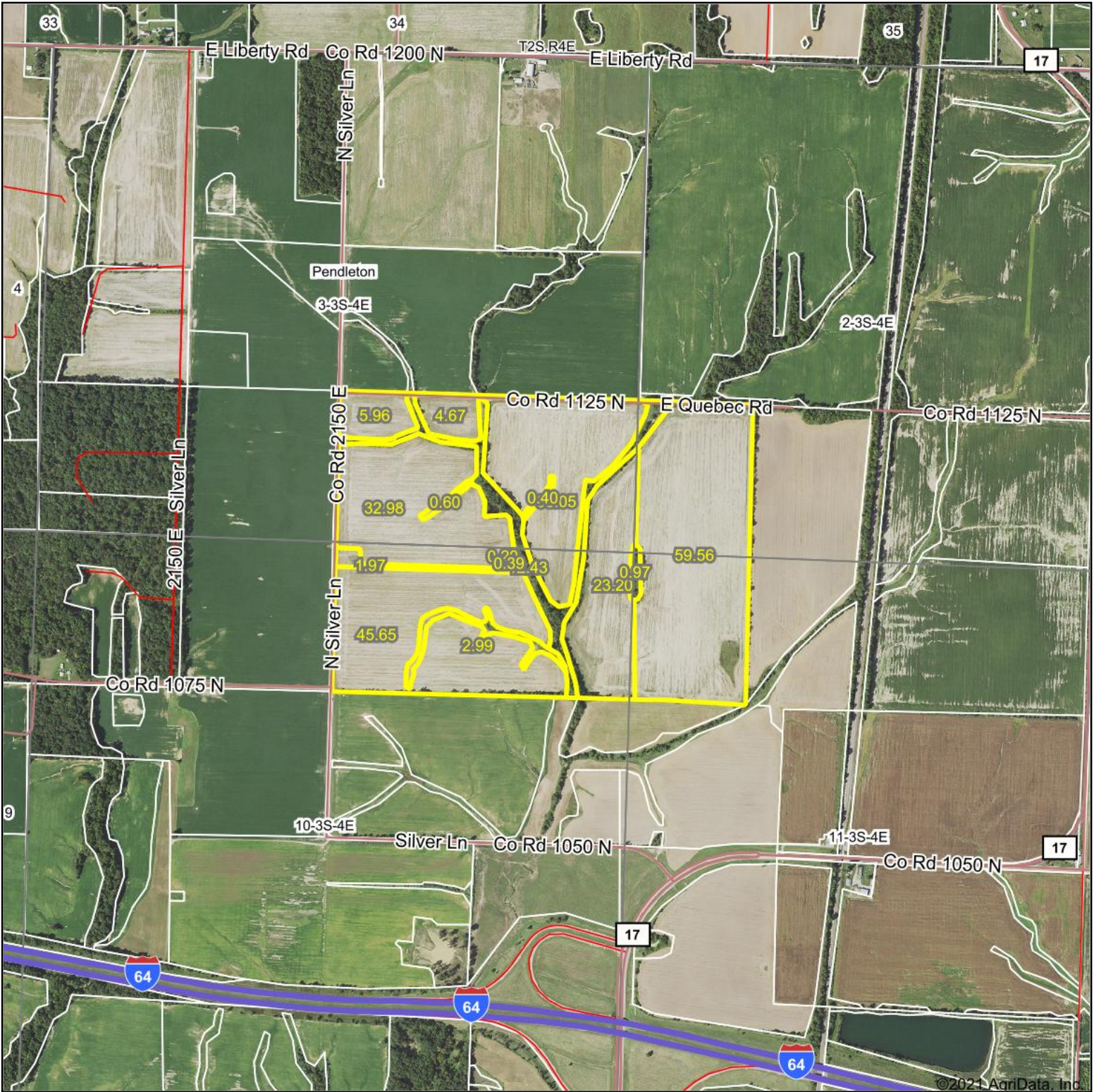
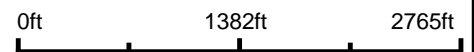


# Aerial Map



Map Center: 38° 17' 12.51, -88° 44' 33.17



**3-3S-4E**  
**Jefferson County**  
**Illinois**



9/17/2021

Maps Provided By:  
**surety**  
CUSTOMIZED ONLINE MAPPING  
© AgriData, Inc. 2021 www.AgriDataInc.com

Field borders provided by Farm Service Agency as of 5/21/2008.

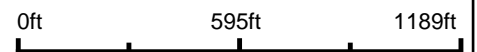


# Aerial Map



©2021 AgriData, Inc.

Map Center: 38° 17' 12.51, -88° 44' 33.28



**3-3S-4E**  
**Jefferson County**  
**Illinois**

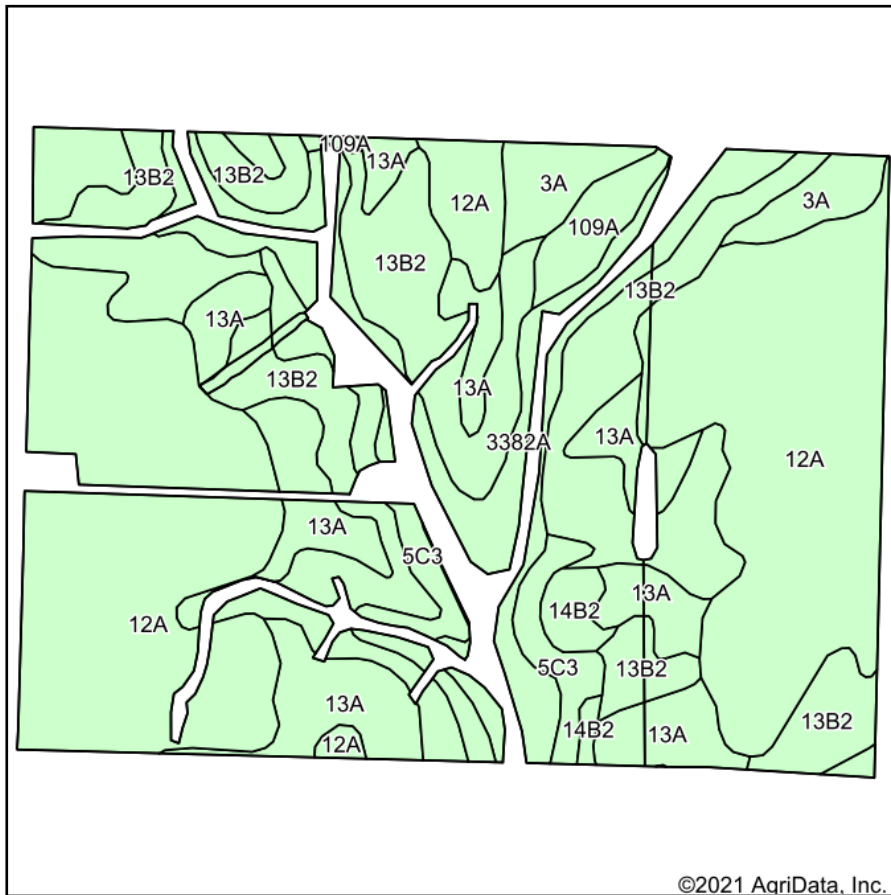


9/17/2021

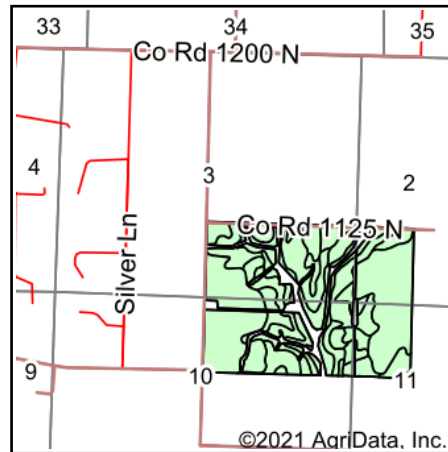
Maps Provided By:  
**surety**  
CUSTOMIZED ONLINE MAPPING  
© AgriData, Inc. 2021 www.AgriDataInc.com

Field borders provided by Farm Service Agency as of 5/21/2008.

# Soils Map



Soils data provided by USDA and NRCS.



State: **Illinois**  
 County: **Jefferson**  
 Location: **3-3S-4E**  
 Township: **Pendleton**  
 Acres: **205.67**  
 Date: **9/17/2021**



Area Symbol: IL081, Soil Area Version: 13

Code	Soil Description	Acres	Percent of field	Corn Bu/A	Soybeans Bu/A	Wheat Bu/A	Grass-legume e hay, T/A	Crop productivity index for optimum management
12A	Wynoose silt loam, 0 to 2 percent slopes	86.81	42.2%	128	42	51	4.26	97
**13B2	Bluford silt loam, 2 to 5 percent slopes, eroded	52.67	25.6%	**129	**42	**52	**3.22	**96
13A	Bluford silt loam, 0 to 2 percent slopes	25.86	12.6%	136	44	55	3.39	101
3382A	Belknap silt loam, 0 to 2 percent slopes, frequently flooded	18.09	8.8%	156	52	63	4.89	117
**5C3	Blair silty clay loam, 5 to 10 percent slopes, severely eroded	9.26	4.5%	**102	**33	**41	**3.25	**77
3A	Hoyleton silt loam, 0 to 2 percent slopes	6.76	3.3%	146	46	58	4.64	108
109A	Racoon silt loam, 0 to 2 percent slopes	3.80	1.8%	144	46	56	0.00	106
**14B2	Ava silt loam, 2 to 5 percent slopes, eroded	2.42	1.2%	**126	**41	**51	0.00	**93
<b>Weighted Average</b>				<b>131.4</b>	<b>42.9</b>	<b>52.7</b>	<b>3.78</b>	<b>98.6</b>

**Table: Optimum Crop Productivity Ratings for Illinois Soil by K.R. Olson and J.M. Lang, Office of Research, ACES, University of Illinois at Champaign-Urbana.** Version: 1/2/2012 Amended Table S2 B811

Crop yields and productivity indices for optimum management (B811) are maintained at the following NRES web site: <http://soilproductivity.nres.illinois.edu/>

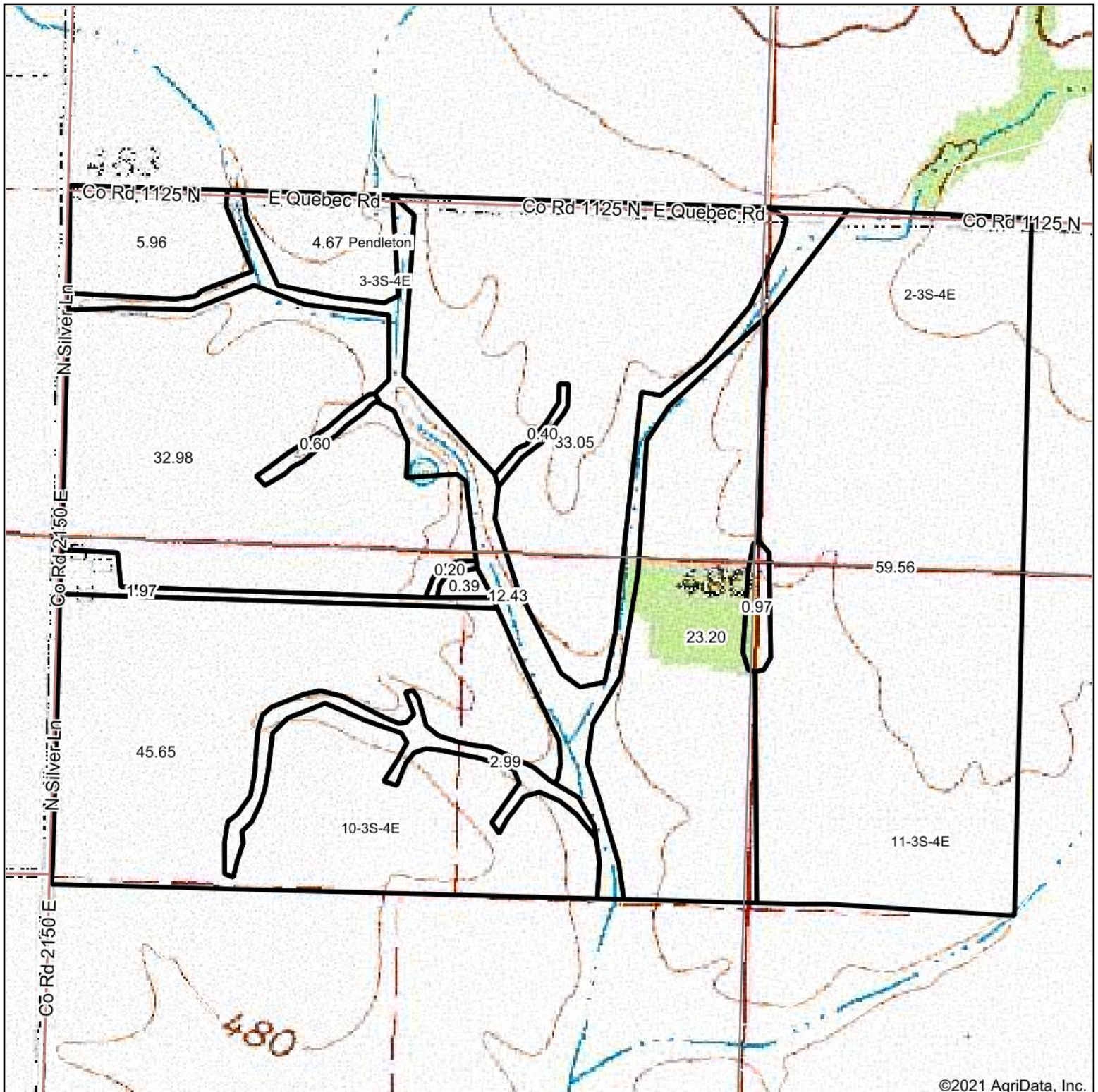
\*\* Indexes adjusted for slope and erosion according to Bulletin 811 Table S3

e Soils in the well drained group were not rated for grass-legume and are shown with a zero "0".

Soils data provided by USDA and NRCS. Soils data provided by University of Illinois at Champaign-Urbana.

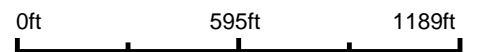


# Topography Map



©2021 AgriData, Inc.

map center: 38° 17' 12.51, -88° 44' 33.28



**3-3S-4E**  
**Jefferson County**  
**Illinois**



9/17/2021



Maps Provided By:



© AgriData, Inc. 2021 www.AgriDataInc.com