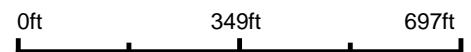


Aerial Map



©2021 AgriData, Inc.

Map Center: 37° 38' 49.6, -88° 45' 41.21



Maps Provided By:



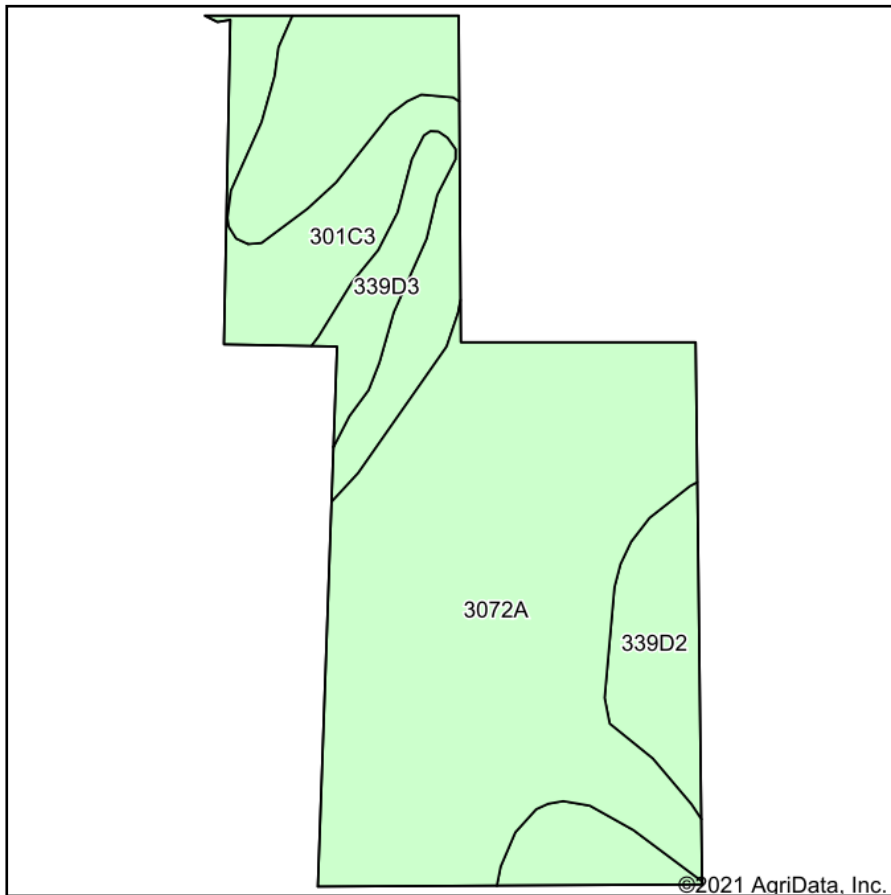
© AgriData, Inc. 2021 www.AgriDataInc.com

15-10S-4E
Williamson County
Illinois

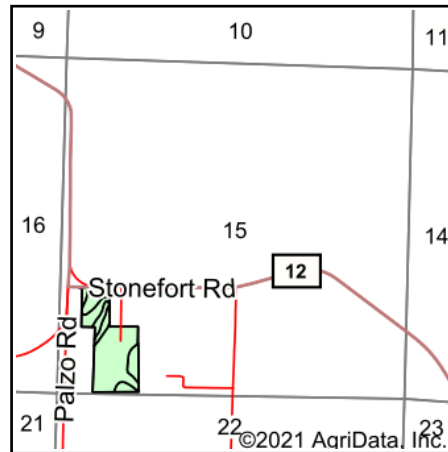


10/13/2021

Soils Map



Soils data provided by USDA and NRCS.



State: **Illinois**
 County: **Williamson**
 Location: **15-10S-4E**
 Township: **Stonefort**
 Acres: **23.74**
 Date: **10/13/2021**



Maps Provided By:



© AgriData, Inc. 2021

www.AgriDataInc.com



Area Symbol: IL199, Soil Area Version: 15

Code	Soil Description	Acres	Percent of field	Corn Bu/A	Soybeans Bu/A	Wheat Bu/A	Grass-legume e hay, T/A	Crop productivity index for optimum management
3072A	Sharon silt loam, 0 to 2 percent slopes, frequently flooded	16.08	67.7%	164	53	63	0.00	122
**301C3	Grantsburg silt loam, 5 to 10 percent slopes, severely eroded	3.77	15.9%	**99	**34	**41	0.00	**75
**339D2	Wellston silt loam, 10 to 18 percent slopes, eroded	2.82	11.9%	**100	**34	**40	**3.06	**76
**339D3	Wellston silt loam, 10 to 18 percent slopes, severely eroded	1.07	4.5%	**82	**28	**33	**2.51	**62
Weighted Average				142.4	46.6	55.4	0.48	106.4

Table: Optimum Crop Productivity Ratings for Illinois Soil by K.R. Olson and J.M. Lang, Office of Research, ACES, University of Illinois at Champaign-Urbana. Version: 1/2/2012 Amended Table S2 B811

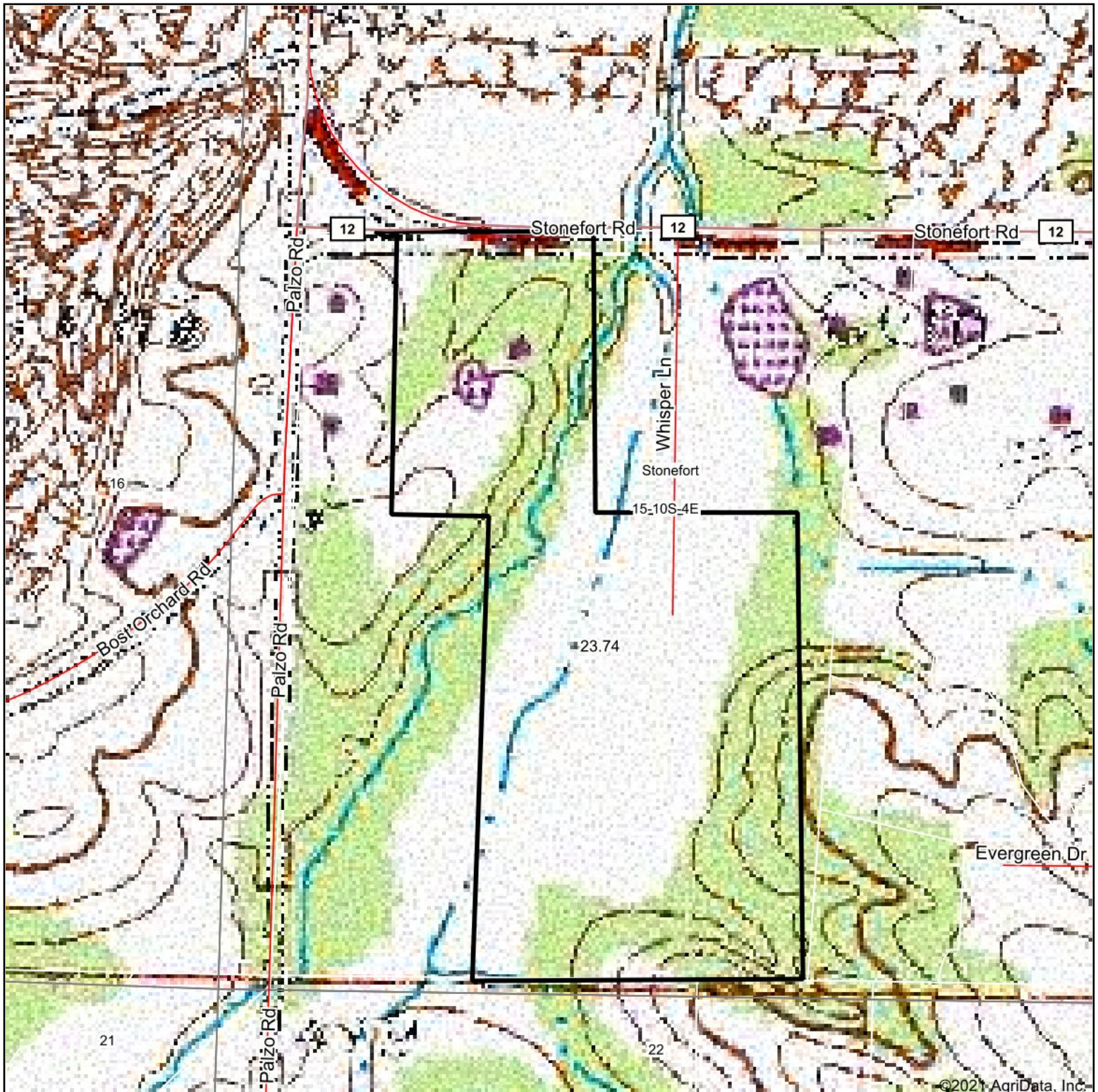
Crop yields and productivity indices for optimum management (B811) are maintained at the following NRES web site: <http://soilproductivity.nres.illinois.edu/>

** Indexes adjusted for slope and erosion according to Bulletin 811 Table S3

e Soils in the well drained group were not rated for grass-legume and are shown with a zero "0".

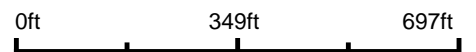
Soils data provided by USDA and NRCS. Soils data provided by University of Illinois at Champaign-Urbana.

Topography Map



©2021 AgriData, Inc.

map center: 37° 38' 49.6, -88° 45' 41.21



15-10S-4E
Williamson County
Illinois



10/13/2021



Maps Provided By:



© AgriData, Inc. 2021

www.AgrIDataInc.com