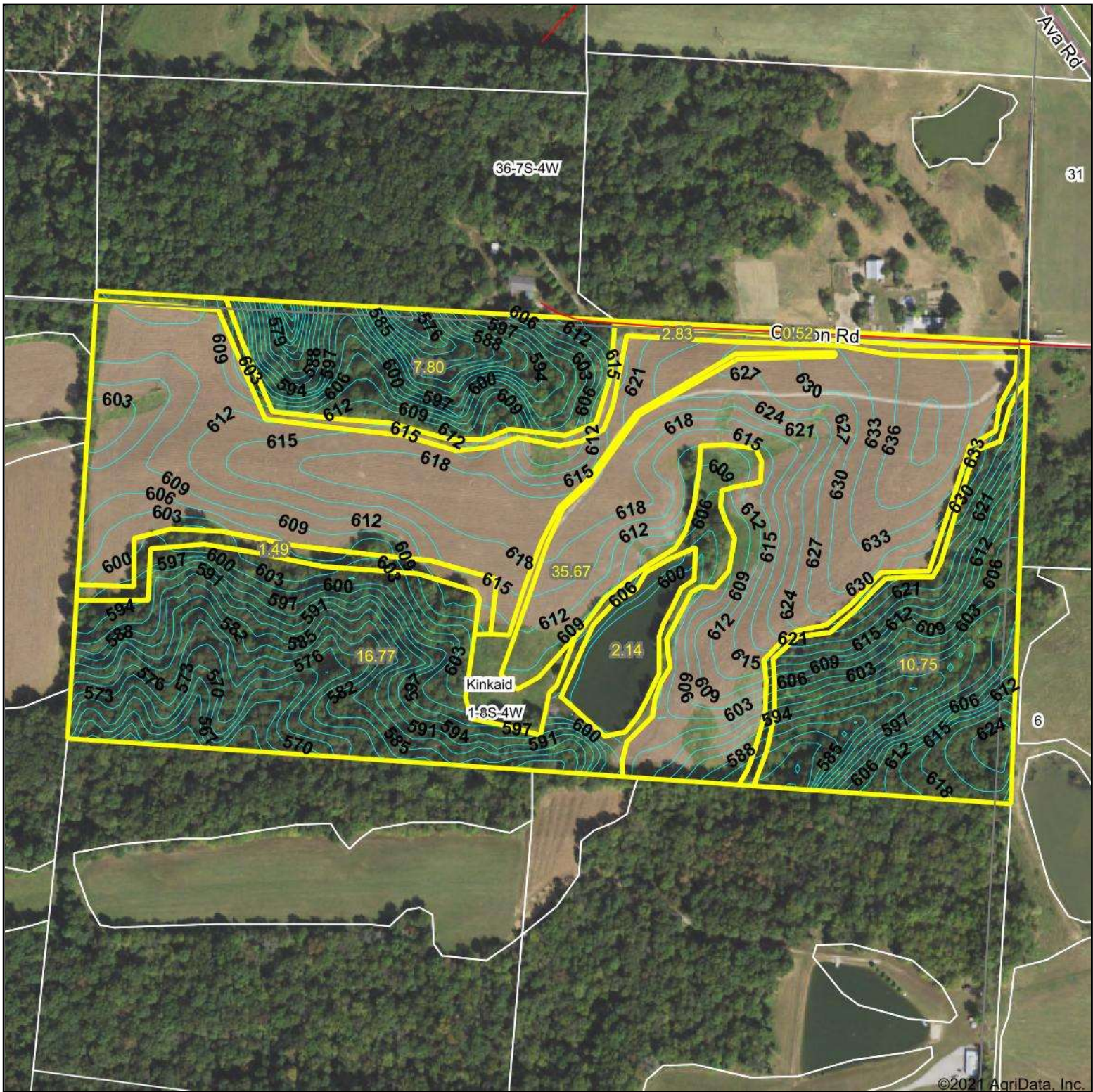


Topography Contours



©2021 AgriData, Inc.

Source: USGS 10 meter dem

0ft 443ft 885ft

Interval(ft): 3.0

Min: 555.7

Max: 639.9

Range: 84.2

Average: 606.0

Standard Deviation: 17.09 ft



7/13/2021

1-8S-4W
Jackson County
Illinois

Map Center: 37° 51' 53.81, -89° 29' 28.69



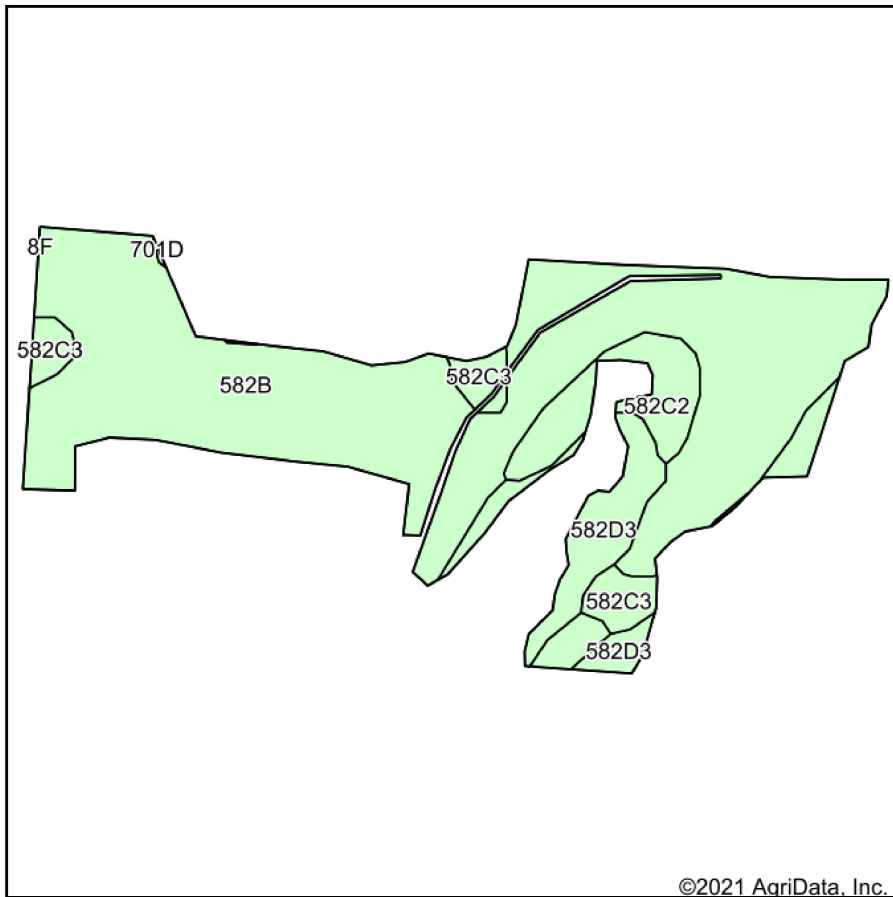
Maps Provided By:



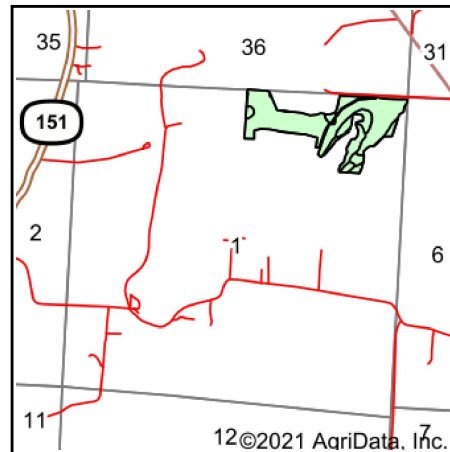
© AgriData, Inc. 2021 www.AgriDataInc.com

Field borders provided by Farm Service Agency as of 5/21/2008.

Soils Map



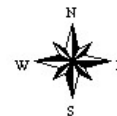
Soils data provided by USDA and NRCS.



State: **Illinois**
 County: **Jackson**
 Location: **1-8S-4W**
 Township: **Kinkaid**
 Acres: **35.67**
 Date: **7/13/2021**



Maps Provided By:



Area Symbol: IL077, Soil Area Version: 20

Code	Soil Description	Acres	Percent of field	Corn Bu/A	Soybeans Bu/A	Wheat Bu/A	Crop productivity index for optimum management
**582B	Homen silt loam, 2 to 5 percent slopes	27.61	77.4%	**149	**47	**55	**108
**582D3	Homen silty clay loam, 10 to 18 percent slopes, severely eroded	3.15	8.8%	**122	**38	**45	**88
**582C2	Homen silt loam, 5 to 10 percent slopes, eroded	2.51	7.0%	**140	**44	**52	**101
**582C3	Homen silty clay loam, 5 to 10 percent slopes, severely eroded	2.40	6.7%	**129	**40	**48	**94
Weighted Average				144.6	45.5	53.4	104.8

Table: Optimum Crop Productivity Ratings for Illinois Soil by K.R. Olson and J.M. Lang, Office of Research, ACES, University of Illinois at Champaign-Urbana. Version: 1/2/2012 Amended Table S2 B811

Crop yields and productivity indices for optimum management (B811) are maintained at the following NRES web site: <http://soilproductivity.nres.illinois.edu/>

** Indexes adjusted for slope and erosion according to Bulletin 811 Table S3

Soils data provided by USDA and NRCS. Soils data provided by University of Illinois at Champaign-Urbana.