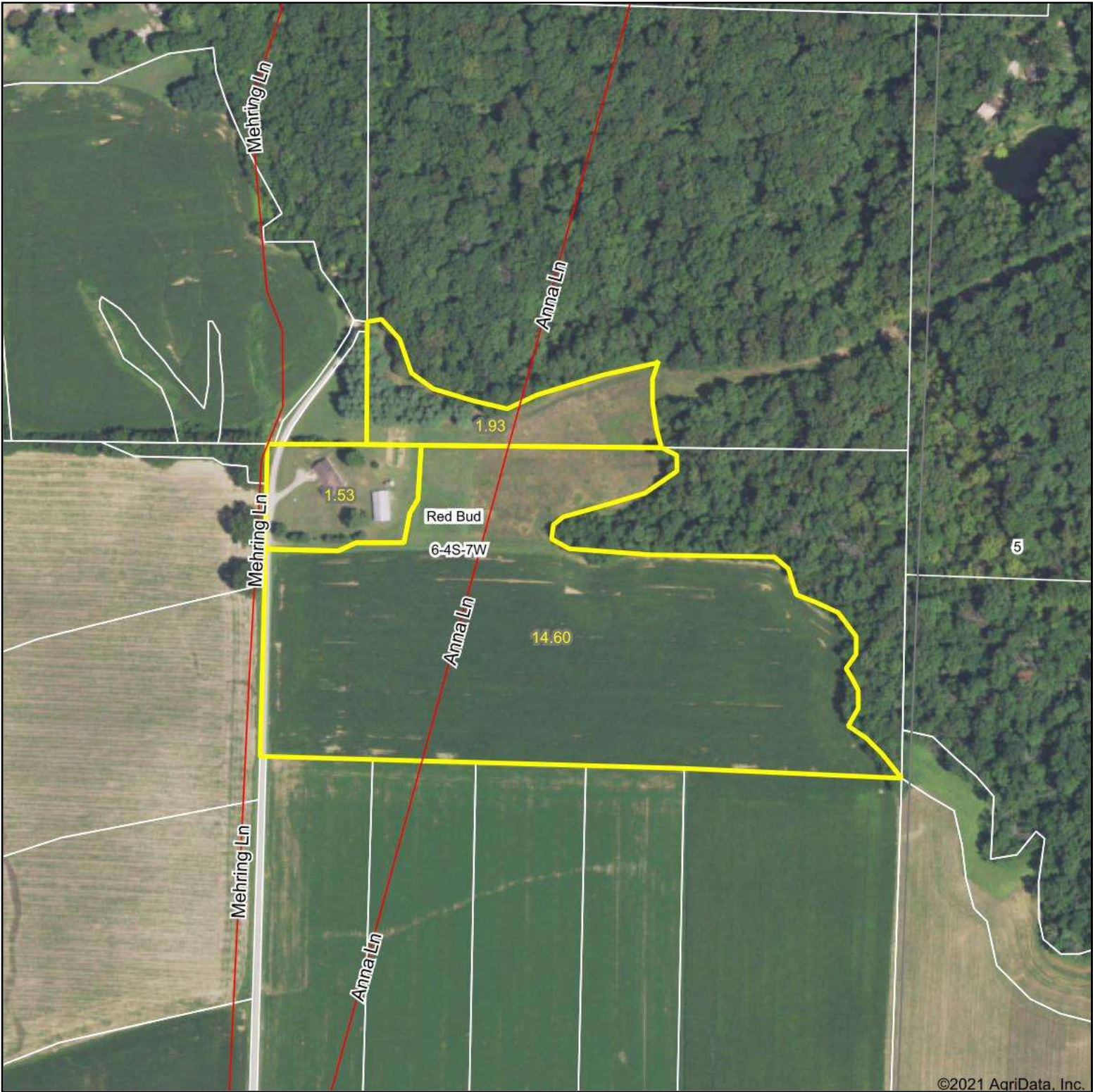
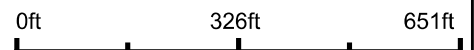


Aerial Map

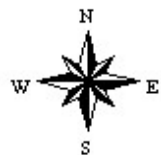


©2021 AgriData, Inc.

Map Center: 38° 12' 52.89, -89° 54' 37.35



6-4S-7W
Randolph County
Illinois

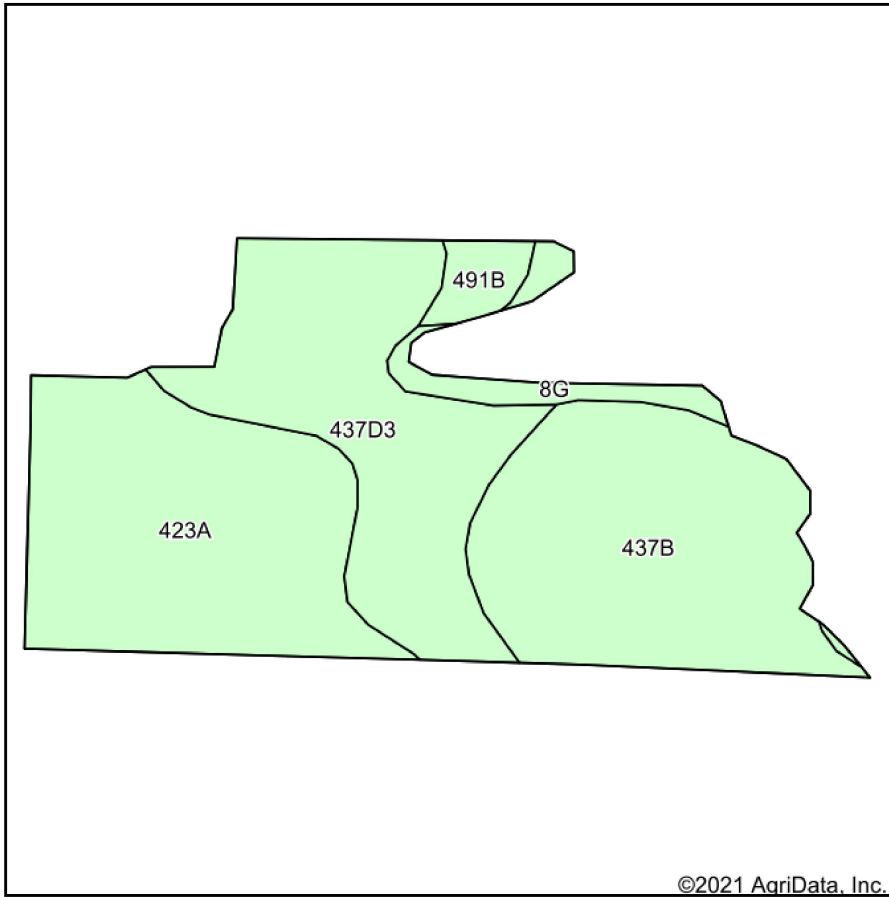


Maps Provided By:
 **surety**
CUSTOMIZED ONLINE MAPPING
© AgriData, Inc. 2021 www.AgriDataInc.com

6/28/2021

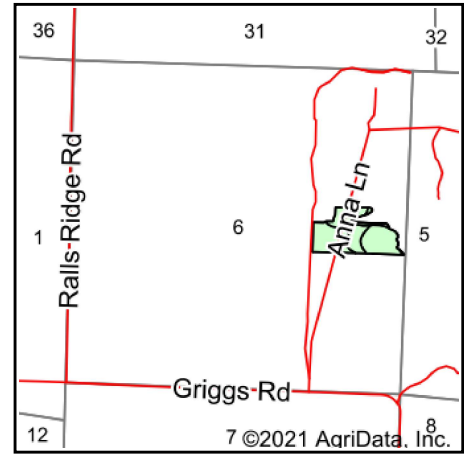
Field borders provided by Farm Service Agency as of 5/21/2008.

Soils Map



©2021 AgriData, Inc.

Soils data provided by USDA and NRCS.



State: **Illinois**
 County: **Randolph**
 Location: **6-4S-7W**
 Township: **Red Bud**
 Acres: **14.6**
 Date: **6/28/2021**



Maps Provided By:



© AgriData, Inc. 2021

www.AgriDataInc.com



Area Symbol: IL157, Soil Area Version: 14

Code	Soil Description	Acres	Percent of field	Corn Bu/A	Soybeans Bu/A	Wheat Bu/A	Crop productivity index for optimum management
423A	Millstadt silt loam, 0 to 2 percent slopes	4.76	32.6%	155	46	55	110
**437B	Redbud silt loam, 2 to 5 percent slopes	4.63	31.7%	**153	**48	**62	**113
**437D3	Redbud silty clay loam, 10 to 18 percent slopes, severely eroded	4.22	28.9%	**126	**39	**51	**92
**8G	Hickory silt loam, 35 to 60 percent slopes	0.61	4.2%	**58	**20	**24	**44
**491B	Ruma silt loam, 2 to 5 percent slopes	0.38	2.6%	**160	**48	**59	**115
Weighted Average				142.1	43.6	54.9	103.1

Table: Optimum Crop Productivity Ratings for Illinois Soil by K.R. Olson and J.M. Lang, Office of Research, ACES, University of Illinois at Champaign-Urbana. Version: 1/2/2012 Amended Table S2 B811

Crop yields and productivity indices for optimum management (B811) are maintained at the following NRES web site: <http://soilproductivity.nres.illinois.edu/>

** Indexes adjusted for slope and erosion according to Bulletin 811 Table S3

Soils data provided by USDA and NRCS. Soils data provided by University of Illinois at Champaign-Urbana.