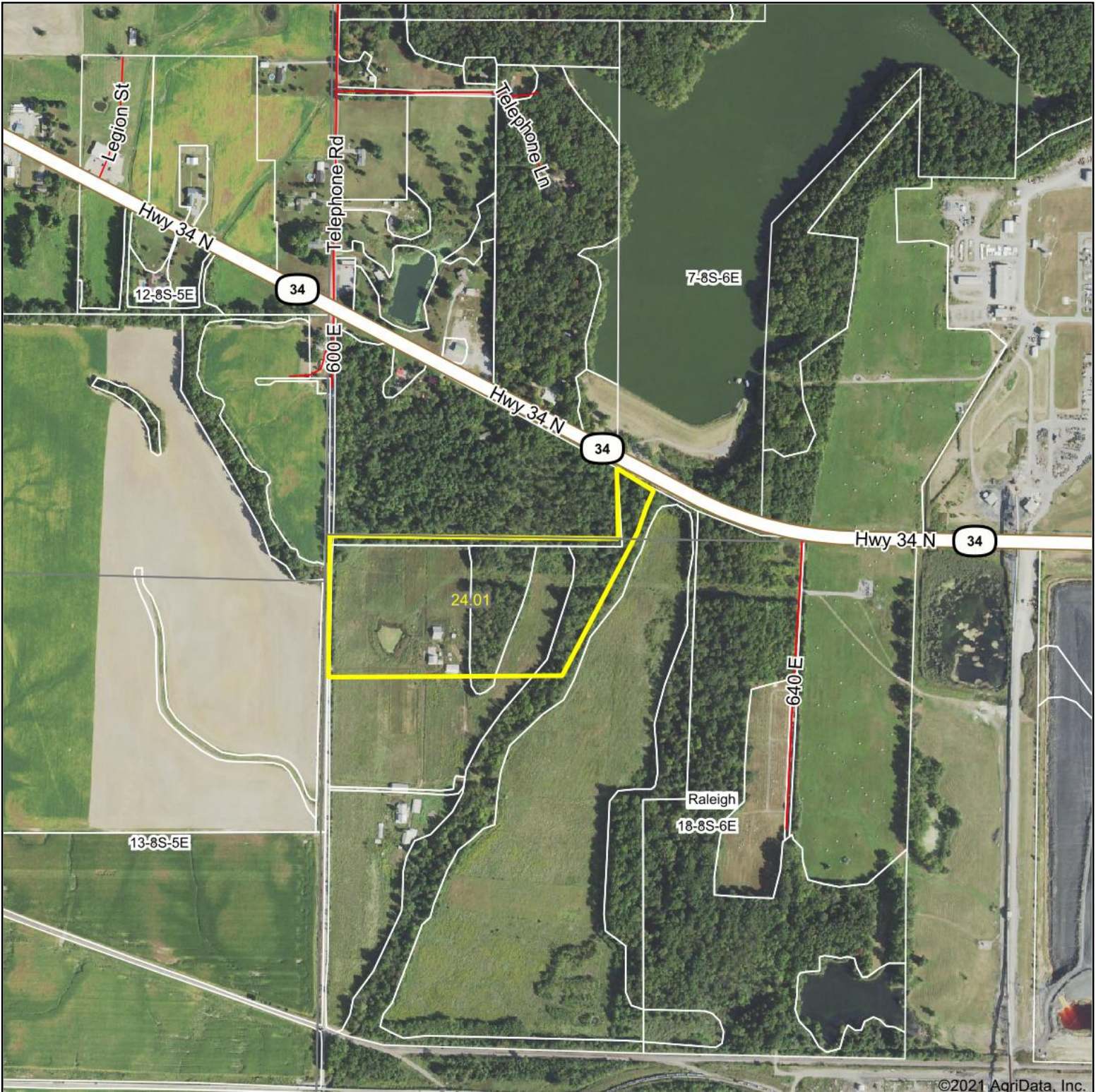


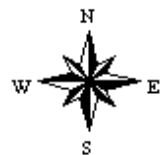
Aerial Map



Map Center: 37° 50' 4.26, -88° 35' 33.04



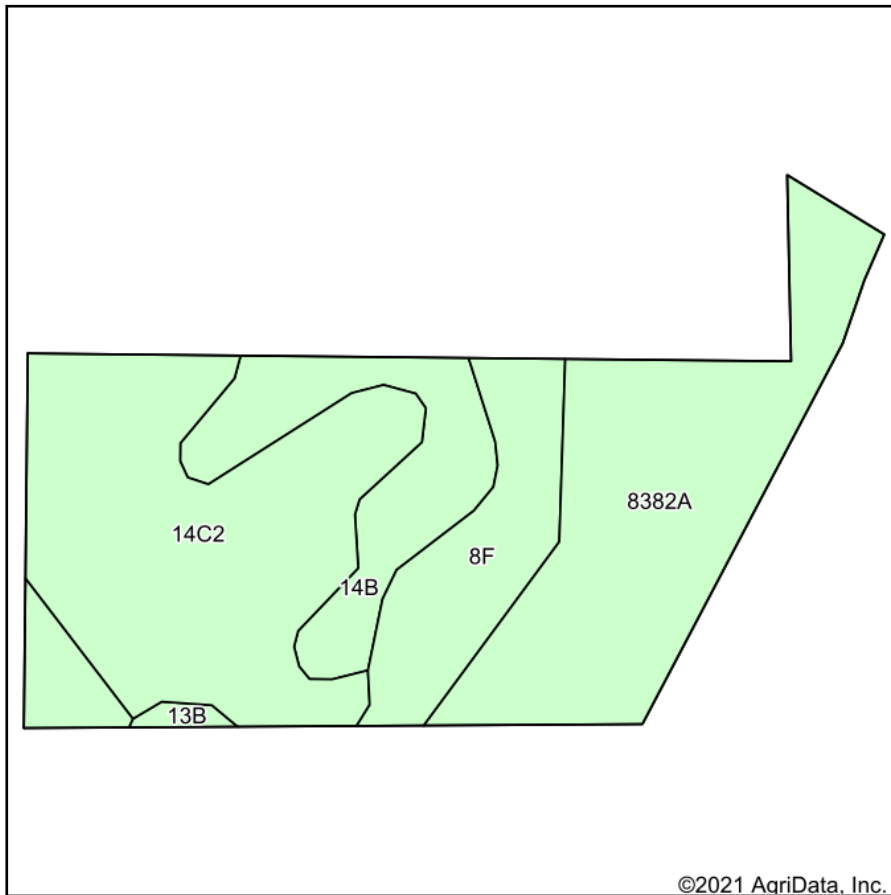
18-8S-6E
Saline County
Illinois



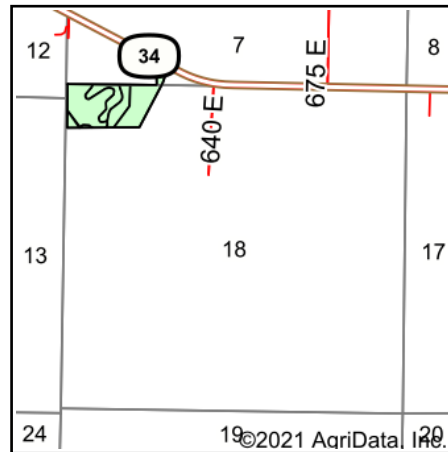
Maps Provided By:
 **surety**
CUSTOMIZED ONLINE MAPPING
© AgriData, Inc. 2021 www.AgriDataInc.com

5/13/2021

Soils Map



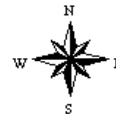
Soils data provided by USDA and NRCS.



State: **Illinois**
 County: **Saline**
 Location: **18-8S-6E**
 Township: **Raleigh**
 Acres: **24.01**
 Date: **5/13/2021**



Maps Provided By:



Area Symbol: IL165, Soil Area Version: 15

Code	Soil Description	Acres	Percent of field	Corn Bu/A	Soybeans Bu/A	Wheat Bu/A	Grass-legume e hay, T/A	Crop productivity index for optimum management
**14C2	Ava silt loam, 5 to 10 percent slopes, eroded	8.90	37.1%	**122	**40	**50	0.00	**90
8382A	Belknap silt loam, 0 to 2 percent slopes, occasionally flooded	8.50	35.4%	156	52	63	4.89	117
**14B	Ava silt loam, 2 to 5 percent slopes	3.35	14.0%	**134	**44	**54	0.00	**99
**8F	Hickory silt loam, 18 to 35 percent slopes	3.09	12.9%	**86	**29	**35	0.00	**65
**13B	Bluford silt loam, 2 to 5 percent slopes	0.17	0.7%	**135	**44	**54	**3.36	**100
Weighted Average				131.2	43.4	53.3	1.75	97.7

Table: Optimum Crop Productivity Ratings for Illinois Soil by K.R. Olson and J.M. Lang, Office of Research, ACES, University of Illinois at Champaign-Urbana. Version: 1/2/2012 Amended Table S2 B811

Crop yields and productivity indices for optimum management (B811) are maintained at the following NRES web site: <http://soilproductivity.nres.illinois.edu/>

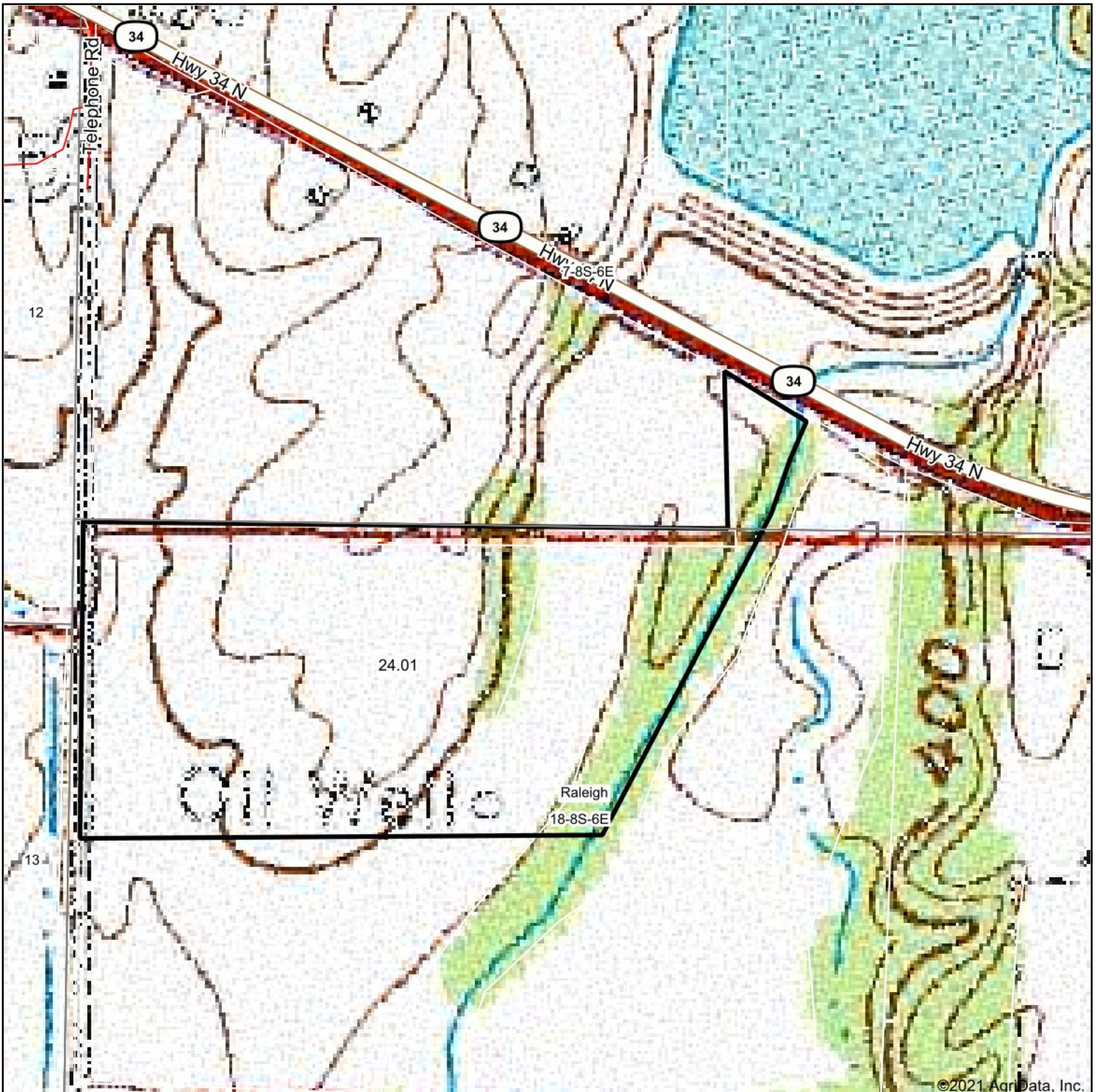
** Indexes adjusted for slope and erosion according to Bulletin 811 Table S3

e Soils in the well drained group were not rated for grass-legume and are shown with a zero "0".

*c: Using Capabilities Class Dominant Condition Aggregation Method

Soils data provided by USDA and NRCS. Soils data provided by University of Illinois at Champaign-Urbana.

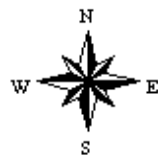
Topography Map



map center: 37° 50' 4.26, -88° 35' 33.68



18-8S-6E
Saline County
Illinois



5/13/2021



Maps Provided By:



© AgriData, Inc. 2021 www.AgriDataInc.com