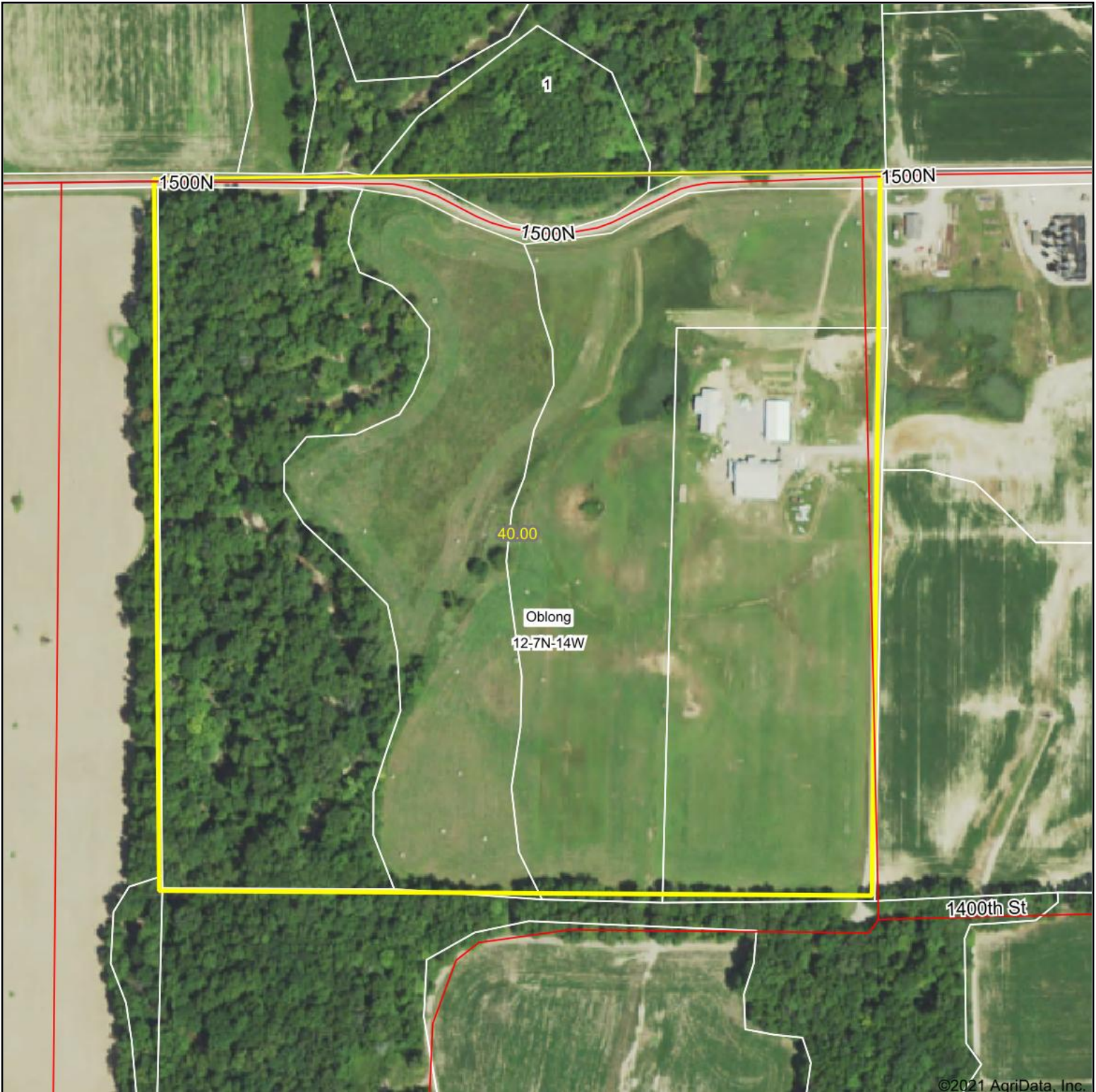
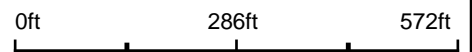


# Aerial Map

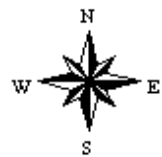


©2021 AgriData, Inc.

Map Center: 39° 4' 9.7, -87° 55' 18.02



**12-7N-14W**  
**Crawford County**  
**Illinois**



5/12/2021



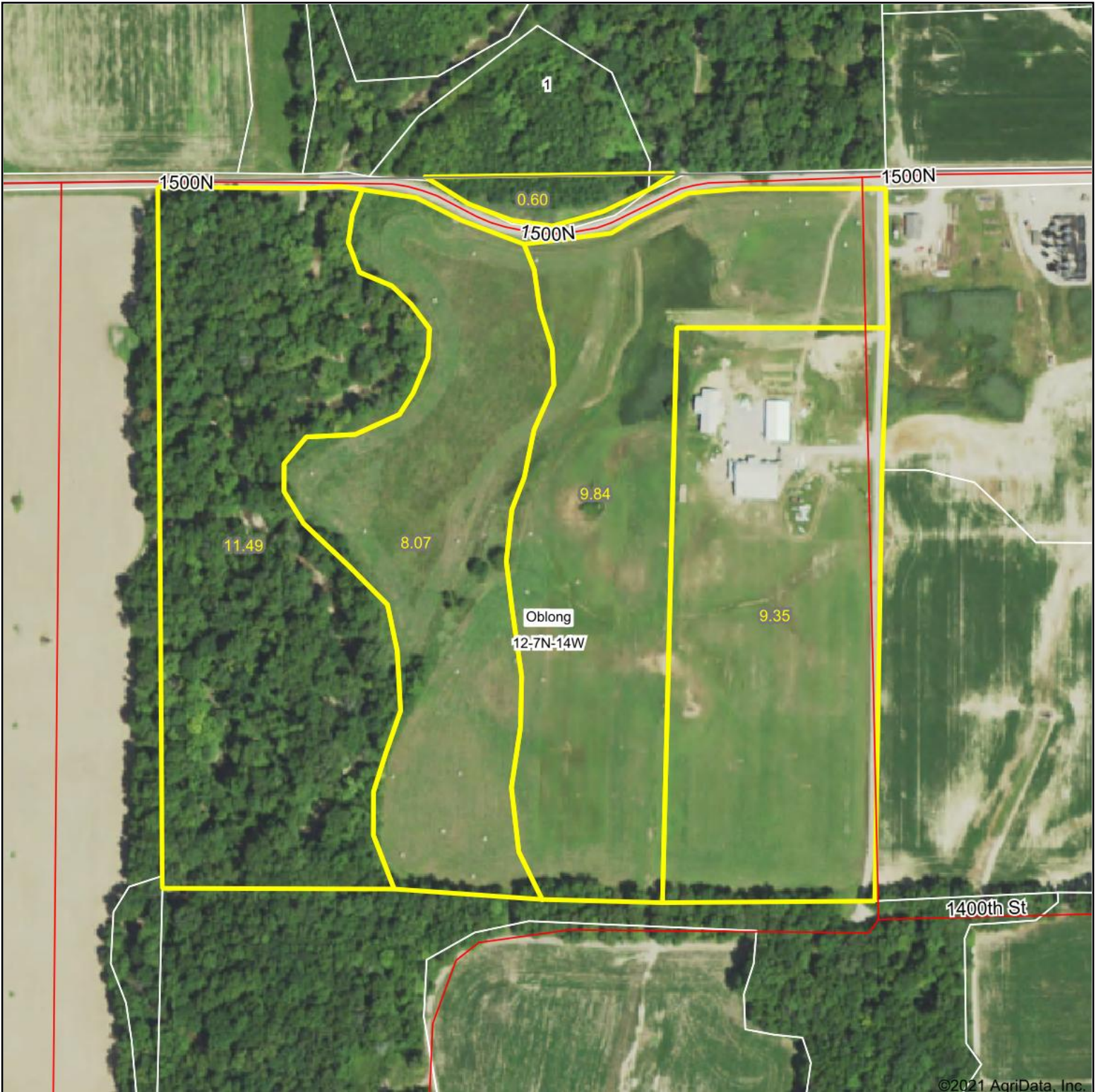
Maps Provided By:



© AgriData, Inc. 2021 www.AgriDataInc.com

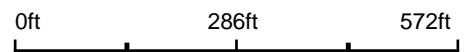
Field borders provided by Farm Service Agency as of 5/21/2008.

# Aerial Map



©2021 AgriData, Inc.

Map Center: 39° 4' 9.7, -87° 55' 18.02



**12-7N-14W**  
**Crawford County**  
**Illinois**



5/12/2021



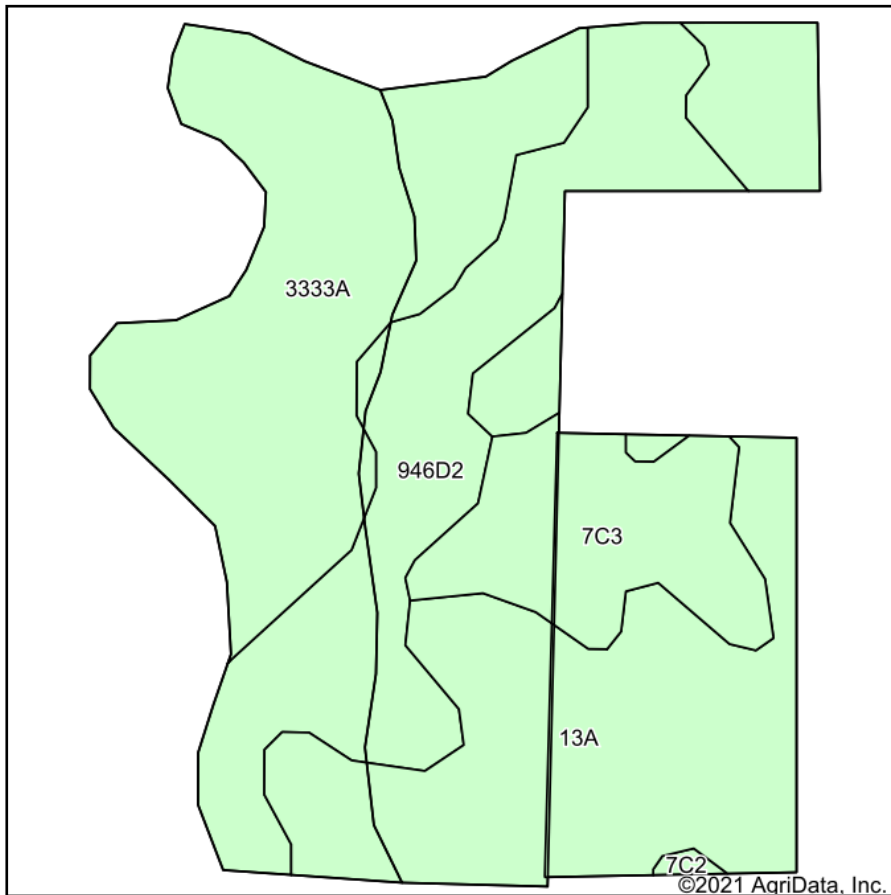
Maps Provided By:



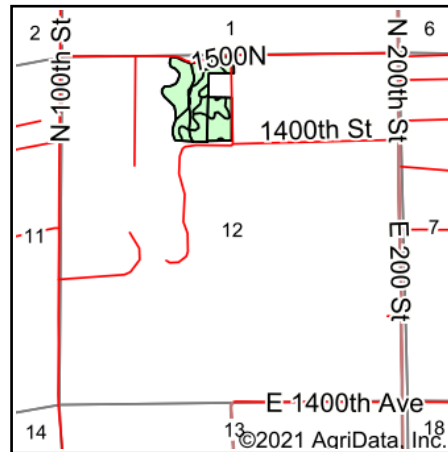
© AgriData, Inc. 2021 www.AgriDataInc.com

Field borders provided by Farm Service Agency as of 5/21/2008.

# Soils Map



Soils data provided by USDA and NRCS.



State: **Illinois**  
 County: **Crawford**  
 Location: **12-7N-14W**  
 Township: **Oblong**  
 Acres: **23.63**  
 Date: **5/12/2021**



Maps Provided By:



© AgriData, Inc. 2021

www.AgriDataInc.com



Area Symbol: IL033, Soil Area Version: 18

Code	Soil Description	Acres	Percent of field	Corn Bu/A	Soybeans Bu/A	Wheat Bu/A	Crop productivity index for optimum management
13A	Bluford silt loam, 0 to 2 percent slopes	8.06	34.1%	136	44	55	101
3333A	Wakeland silt loam, 0 to 2 percent slopes, frequently flooded	7.19	30.4%	174	56	68	128
**946D2	Hickory-Atlas complex, 10 to 18 percent slopes, eroded	5.53	23.4%	**100	**34	**40	**76
**7C3	Atlas silty clay loam, 5 to 10 percent slopes, severely eroded	2.78	11.8%	**87	**30	**34	**67
**7C2	Atlas silt loam, 5 to 10 percent slopes, eroded	0.07	0.3%	**105	**37	**41	**81
<b>Weighted Average</b>				<b>133.3</b>	<b>43.6</b>	<b>52.9</b>	<b>99.3</b>

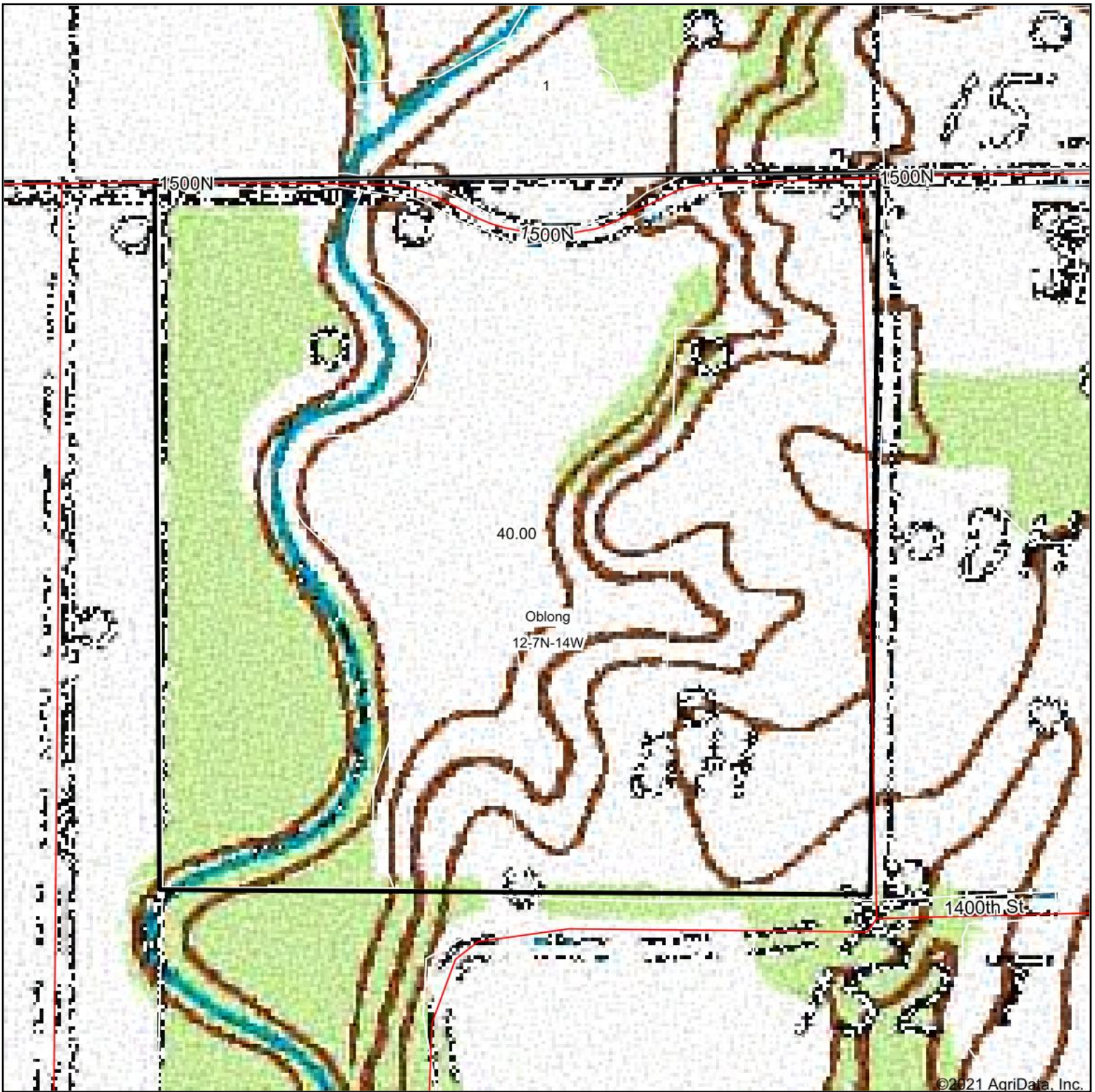
**Table: Optimum Crop Productivity Ratings for Illinois Soil by K.R. Olson and J.M. Lang, Office of Research, ACES, University of Illinois at Champaign-Urbana.** Version: 1/2/2012 Amended Table S2 B811

Crop yields and productivity indices for optimum management (B811) are maintained at the following NRES web site: <http://soilproductivity.nres.illinois.edu/>

\*\* Indexes adjusted for slope and erosion according to Bulletin 811 Table S3

Soils data provided by USDA and NRCS. Soils data provided by University of Illinois at Champaign-Urbana.

# Topography Map

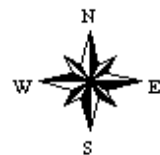


©2021 AgriData, Inc.

map center: 39° 4' 9.7, -87° 55' 18.02

0ft 286ft 572ft

**12-7N-14W**  
**Crawford County**  
**Illinois**



5/12/2021



Maps Provided By:



© AgriData, Inc. 2021

www.AgriDataInc.com

Field borders provided by Farm Service Agency as of 5/21/2008.