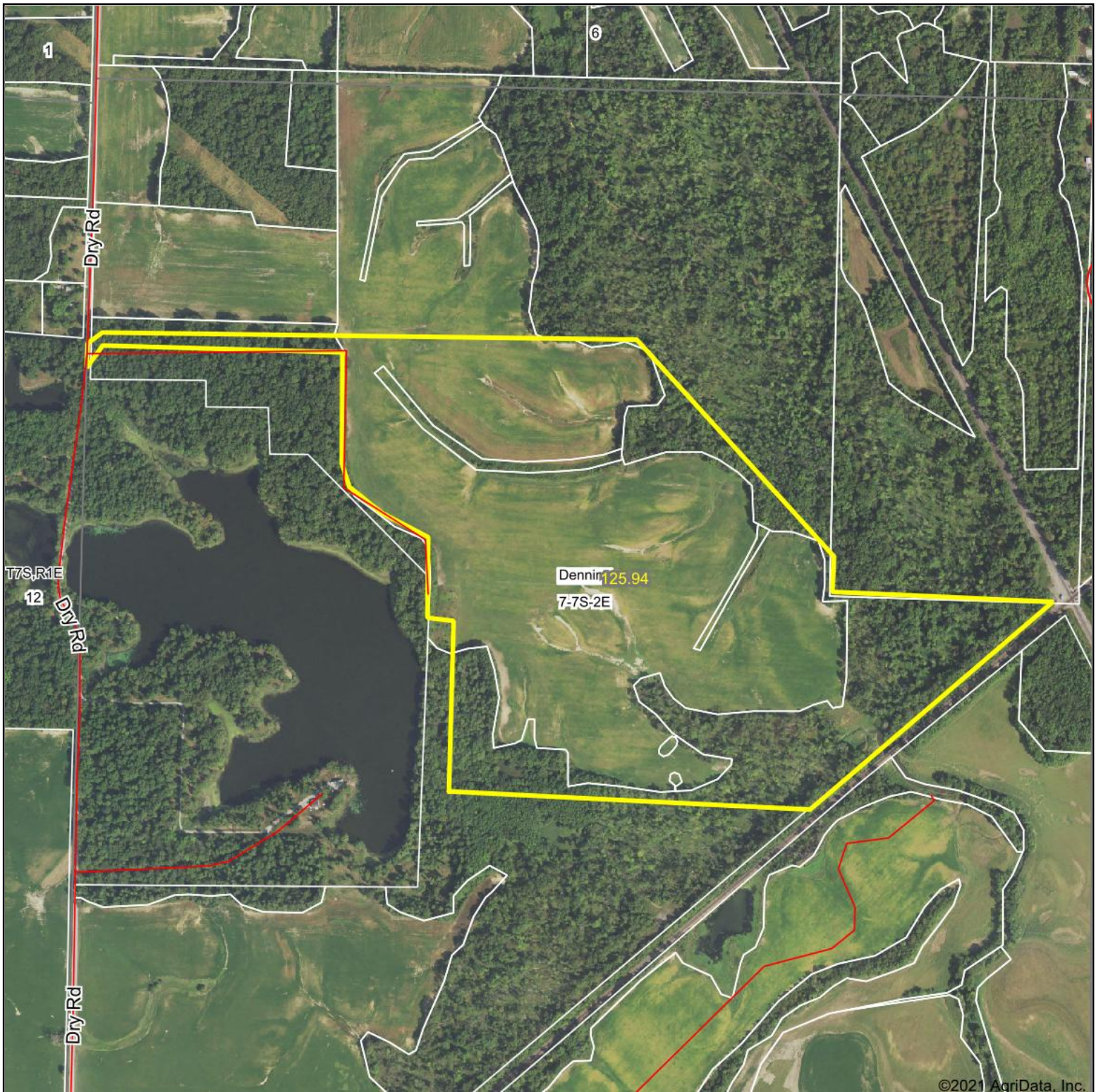


Aerial Map



©2021 AgriData, Inc.



Maps Provided By:



surety
CUSTOMIZED ONLINE MAPPING

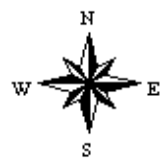
© AgriData, Inc. 2021

www.AgriDataInc.com

Map Center: 37° 55' 44.27, -89° 1' 52.82

0ft 810ft 1620ft

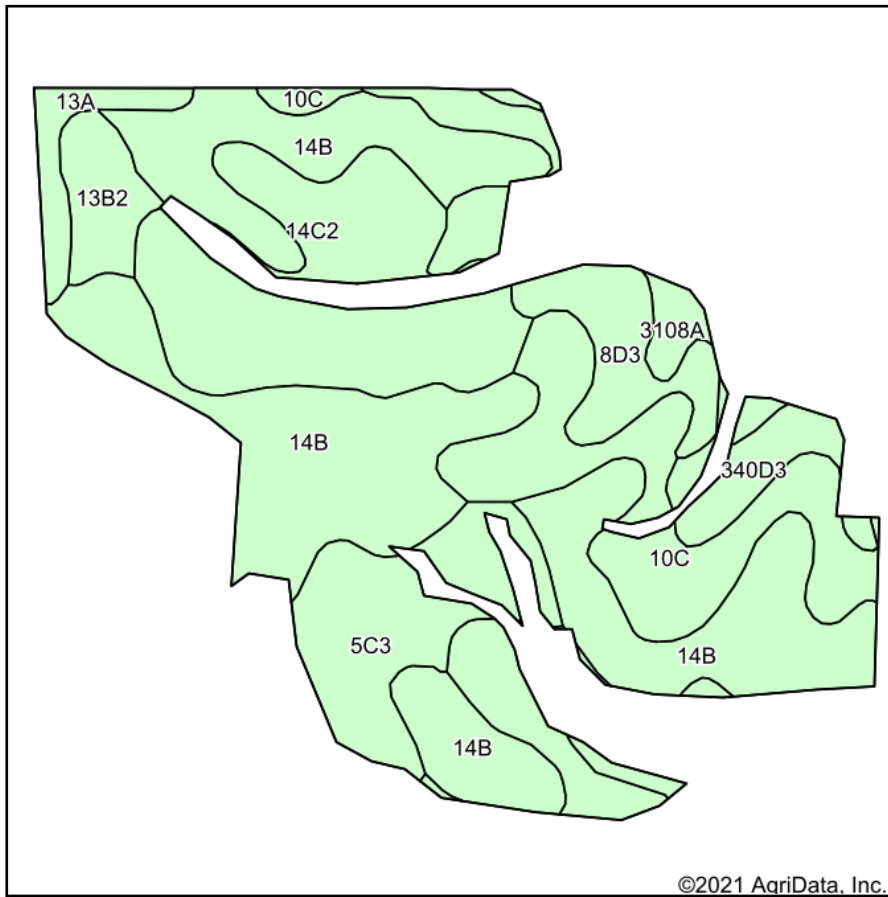
7-7S-2E
Franklin County
Illinois



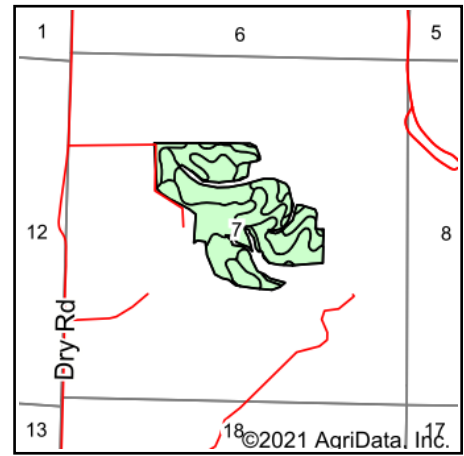
5/5/2021

Field borders provided by Farm Service Agency as of 5/21/2008.

Soils Map



Soils data provided by USDA and NRCS.



State: **Illinois**
 County: **Franklin**
 Location: **7-7S-2E**
 Township: **Denning**
 Acres: **77.39**
 Date: **1/28/2021**



Maps Provided By:



© AgriData, Inc. 2021

www.AgriDataInc.com



Code	Soil Description	Acres	Percent of field	Corn Bu/A	Soybeans Bu/A	Wheat Bu/A	Crop productivity index for optimum management
**14B	Ava silt loam, 2 to 5 percent slopes	29.42	38.0%	**134	**44	**54	**99
**10C	Plumfield silty clay loam, 5 to 10 percent slopes	13.14	17.0%	**103	**34	**39	**78
**14C2	Ava silt loam, 5 to 10 percent slopes, eroded	12.94	16.7%	**122	**40	**50	**90
**5C3	Blair silty clay loam, 5 to 10 percent slopes, severely eroded	7.11	9.2%	**102	**33	**41	**77
**8D3	Hickory clay loam, 10 to 18 percent slopes, severely eroded	6.08	7.9%	**98	**33	**40	**75
**13B2	Bluford silt loam, 2 to 5 percent slopes, eroded	2.53	3.3%	**129	**42	**52	**96
**340D3	Zanesville silt loam, till plain, 10 to 18 percent slopes, severely eroded	2.48	3.2%	**86	**30	**37	**65
13A	Bluford silt loam, 0 to 2 percent slopes	1.85	2.4%	136	44	55	101
3108A	Bonnie silt loam, 0 to 2 percent slopes, frequently flooded	1.84	2.4%	149	49	59	111
Weighted Average				119.7	39.4	48	89.2

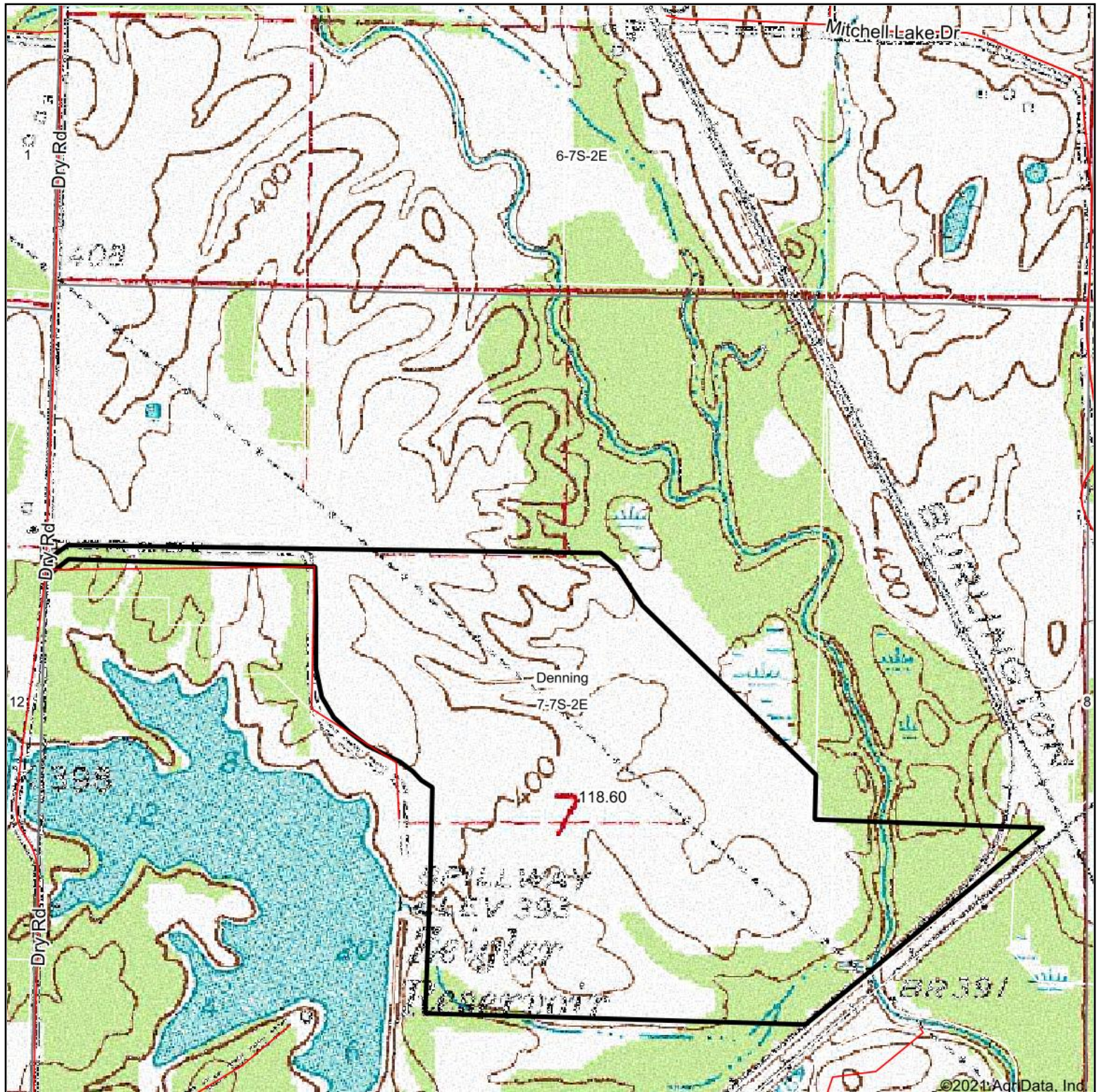
Table: Optimum Crop Productivity Ratings for Illinois Soil by K.R. Olson and J.M. Lang, Office of Research, ACES, University of Illinois at Champaign-Urbana. Version: 1/2/2012 Amended Table S2 B811

Crop yields and productivity indices for optimum management (B811) are maintained at the following NRES web site: <http://soilproductivity.nres.illinois.edu/>

** Indexes adjusted for slope and erosion according to Bulletin 811 Table S3

Soils data provided by USDA and NRCS. Soils data provided by University of Illinois at Champaign-Urbana.

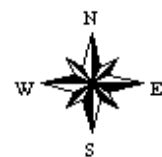
Topography Map



map center: 37° 55' 55.39, -89° 1' 51.44

0ft 782ft 1564ft

7-7S-2E
Franklin County
Illinois



1/28/2021



Maps Provided By:



© AgriData, Inc. 2021

www.AgriDataInc.com

Field borders provided by Farm Service Agency as of 5/21/2008.