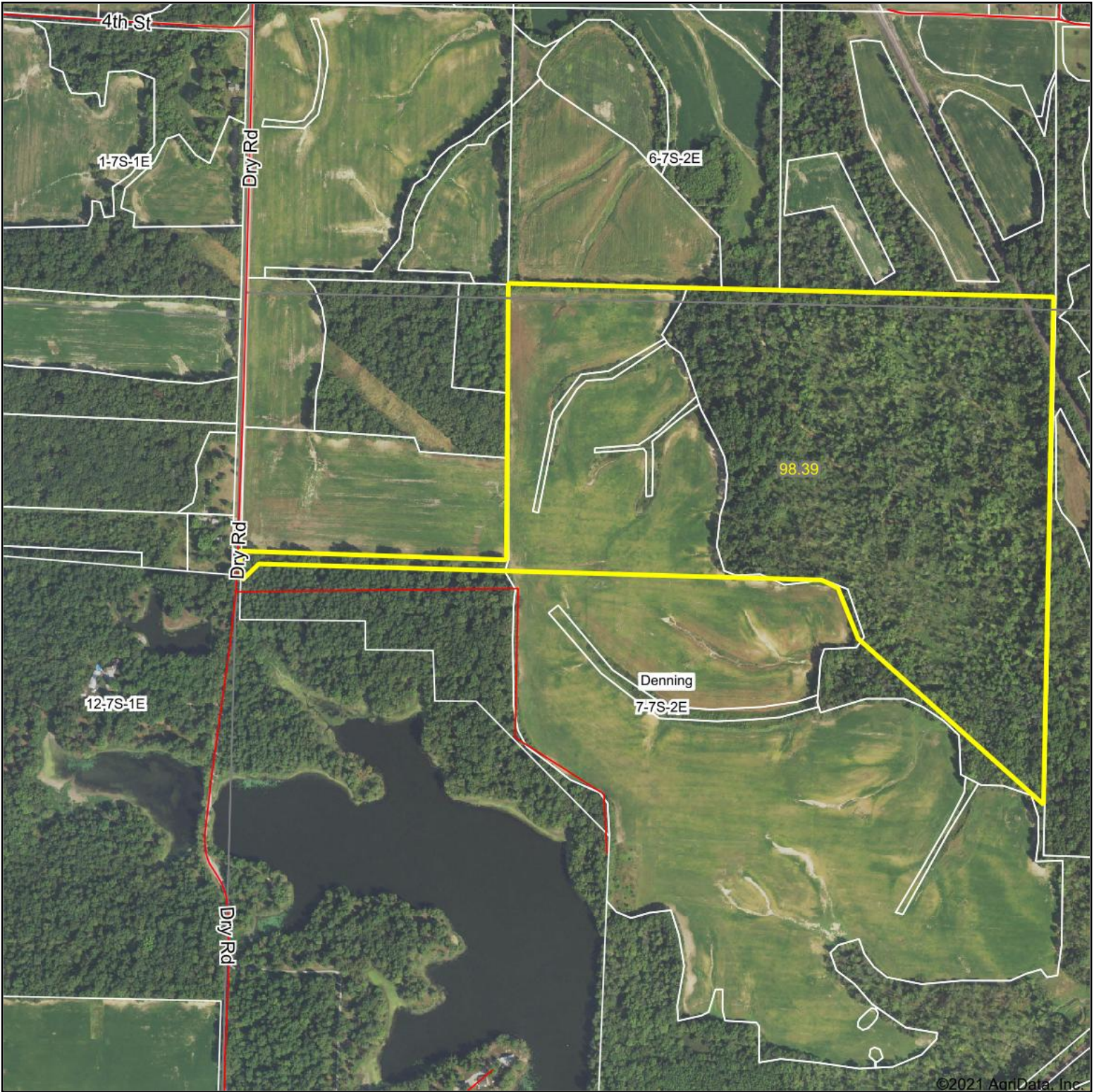
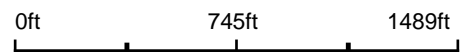


# Aerial Map

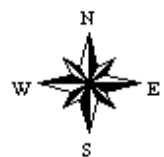


©2021 AgriData, Inc.

Map Center: 37° 55' 56.22, -89° 2' 4.56



**7-7S-2E**  
**Franklin County**  
**Illinois**



Maps Provided By:  
 **surety**  
CUSTOMIZED ONLINE MAPPING

© AgriData, Inc. 2021      www.AgriDataInc.com

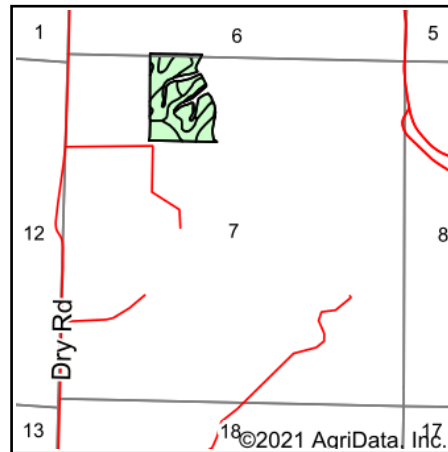
1/28/2021

Field borders provided by Farm Service Agency as of 5/21/2008.

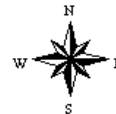
# Soils Map



Soils data provided by USDA and NRCS.



State: **Illinois**  
 County: **Franklin**  
 Location: **7-7S-2E**  
 Township: **Denning**  
 Acres: **25.49**  
 Date: **1/31/2021**



Code	Soil Description	Acres	Percent of field	Corn Bu/A	Soybeans Bu/A	Wheat Bu/A	Crop productivity index for optimum management
**14B	Ava silt loam, 2 to 5 percent slopes	10.63	41.7%	**134	**44	**54	**99
**5C3	Blair silty clay loam, 5 to 10 percent slopes, severely eroded	6.74	26.4%	**102	**33	**41	**77
**8D3	Hickory clay loam, 10 to 18 percent slopes, severely eroded	3.74	14.7%	**98	**33	**40	**75
13A	Bluford silt loam, 0 to 2 percent slopes	2.80	11.0%	136	44	55	101
**10C	Plumfield silty clay loam, 5 to 10 percent slopes	1.58	6.2%	**103	**34	**39	**78
<b>Weighted Average</b>				<b>118.6</b>	<b>38.9</b>	<b>47.7</b>	<b>88.6</b>

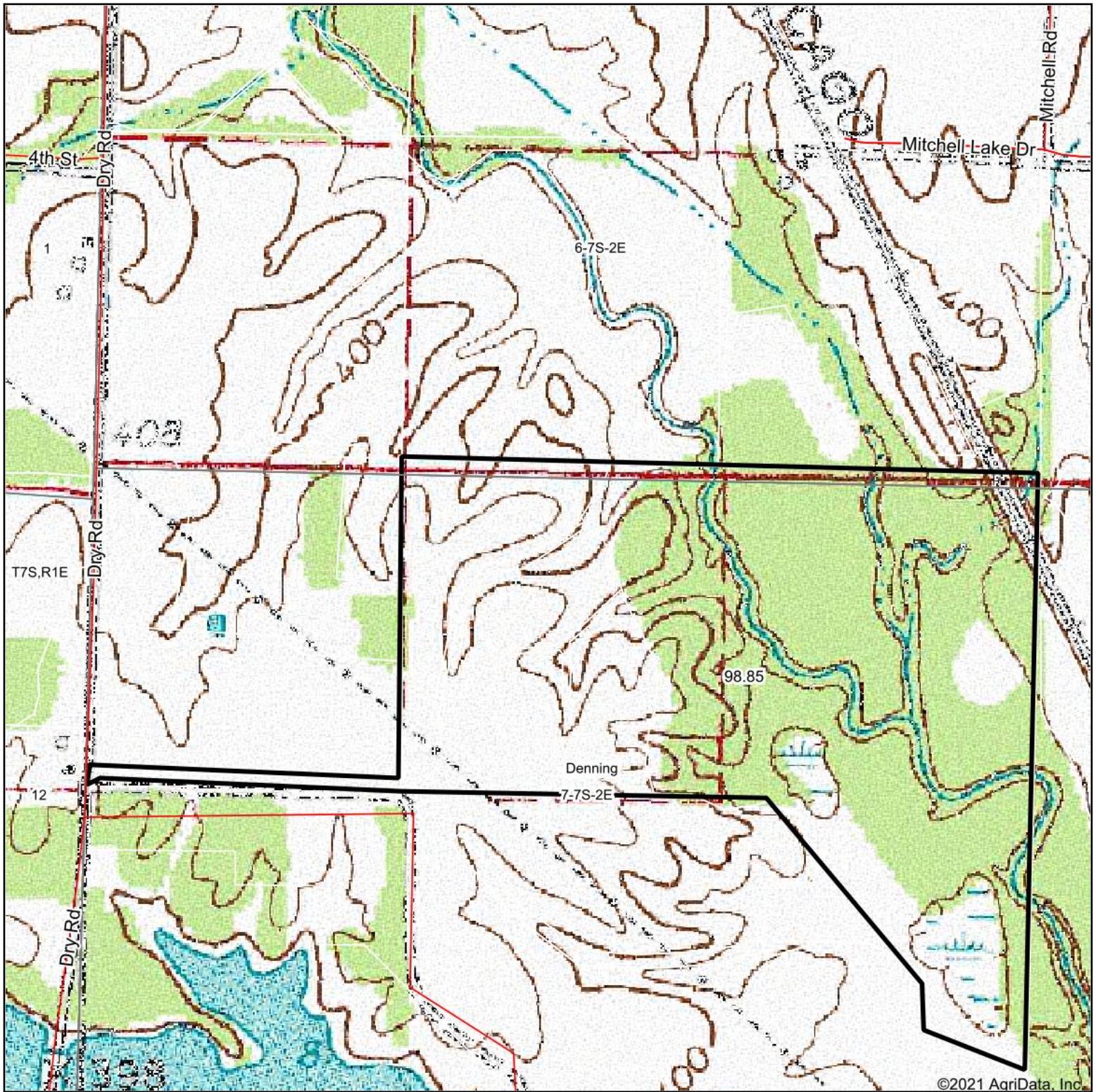
**Table: Optimum Crop Productivity Ratings for Illinois Soil by K.R. Olson and J.M. Lang, Office of Research, ACES, University of Illinois at Champaign-Urbana.** Version: 1/2/2012 Amended Table S2 B811

Crop yields and productivity indices for optimum management (B811) are maintained at the following NRES web site: <http://soilproductivity.nres.illinois.edu/>

\*\* Indexes adjusted for slope and erosion according to Bulletin 811 Table S3

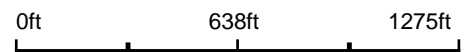
Soils data provided by USDA and NRCS. Soils data provided by University of Illinois at Champaign-Urbana.

# Topography Map

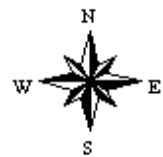


©2021 AgriData, Inc.

map center: 37° 56' 5.13, -89° 1' 59.62



**7-7S-2E**  
**Franklin County**  
**Illinois**



5/6/2021



Maps Provided By:



© AgriData, Inc. 2021 www.AgriDataInc.com

Field borders provided by Farm Service Agency as of 5/21/2008.