

Aerial Map



Map Center: 37° 37' 26.21, -88° 50' 39.39

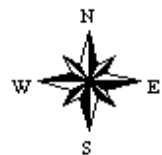


Maps Provided By:



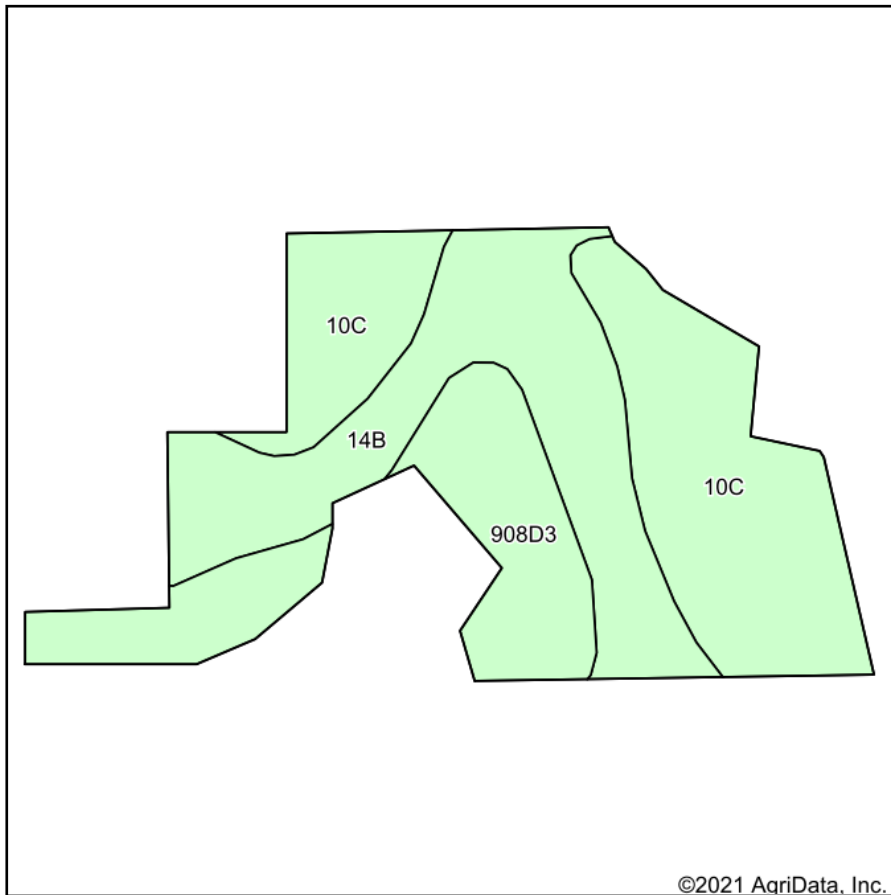
© AgriData, Inc. 2021 www.AgriDataInc.com

26-10S-3E
Williamson County
Illinois

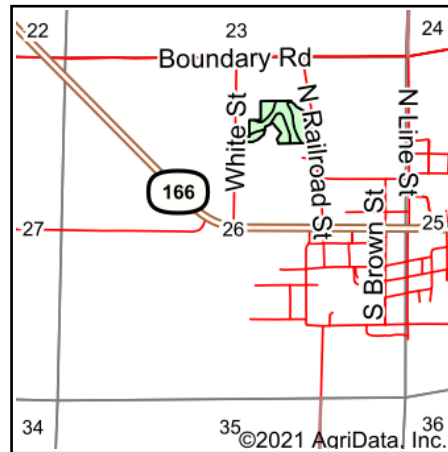


5/12/2021

Soils Map



Soils data provided by USDA and NRCS.



State: **Illinois**
 County: **Williamson**
 Location: **26-10S-3E**
 Township: **Creal Springs**
 Acres: **11.5**
 Date: **5/12/2021**

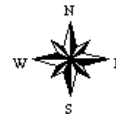


Maps Provided By:



© AgriData, Inc. 2021

www.AgriDataInc.com



Area Symbol: IL199, Soil Area Version: 15

Code	Soil Description	Acres	Percent of field	Corn Bu/A	Soybeans Bu/A	Wheat Bu/A	Grass-legume e hay, T/A	Crop productivity index for optimum management
**10C	Plumfield silty clay loam, 5 to 10 percent slopes	4.70	40.9%	**103	**34	**39	**3.37	**78
**14B	Ava silt loam, 2 to 5 percent slopes	3.96	34.4%	**134	**44	**54	0.00	**99
**908D3	Hickory-Kell clay loams, 10 to 18 percent slopes, severely eroded	2.84	24.7%	**99	**33	**39	**3.21	**76
Weighted Average				112.7	37.2	44.2	2.17	84.7

Table: Optimum Crop Productivity Ratings for Illinois Soil by K.R. Olson and J.M. Lang, Office of Research, ACES, University of Illinois at Champaign-Urbana. Version: 1/2/2012 Amended Table S2 B811

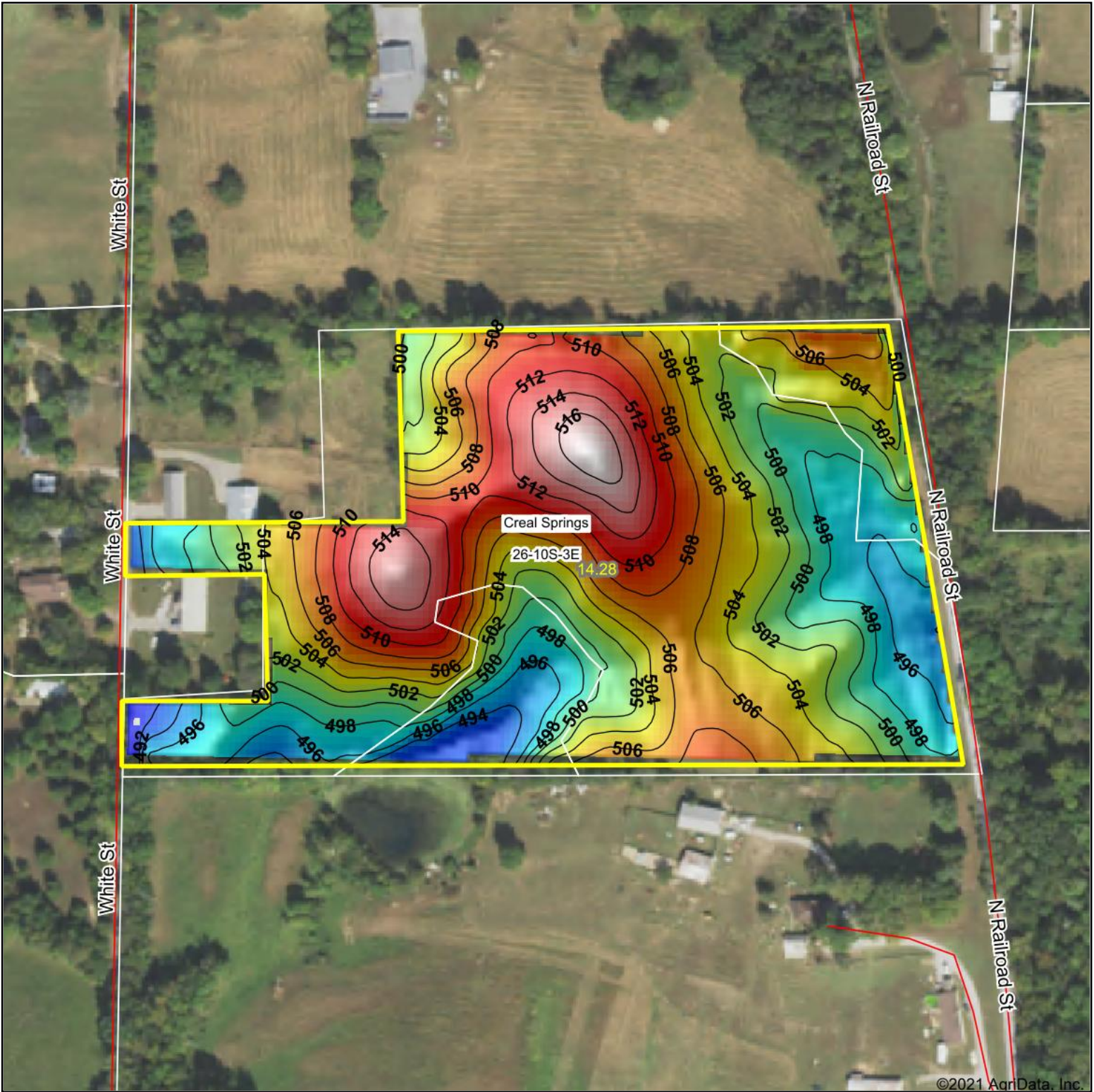
Crop yields and productivity indices for optimum management (B811) are maintained at the following NRES web site: <http://soilproductivity.nres.illinois.edu/>

** Indexes adjusted for slope and erosion according to Bulletin 811 Table S3

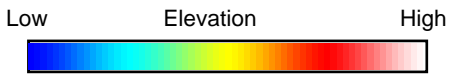
e Soils in the well drained group were not rated for grass-legume and are shown with a zero "0".

*c: Using Capabilities Class Dominant Condition Aggregation Method

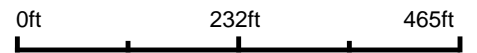
Soils data provided by USDA and NRCS. Soils data provided by University of Illinois at Champaign-Urbana.



©2021 AgriData, Inc.



Source: USGS 3 meter dem
 Interval(ft): 2
 Min: 490.5
 Max: 517.5
 Range: 27.0
 Average: 504.0
 Standard Deviation: 5.71 ft



26-10S-3E
Williamson County
Illinois

map center: 37° 37' 26.21, -88° 50' 39.39



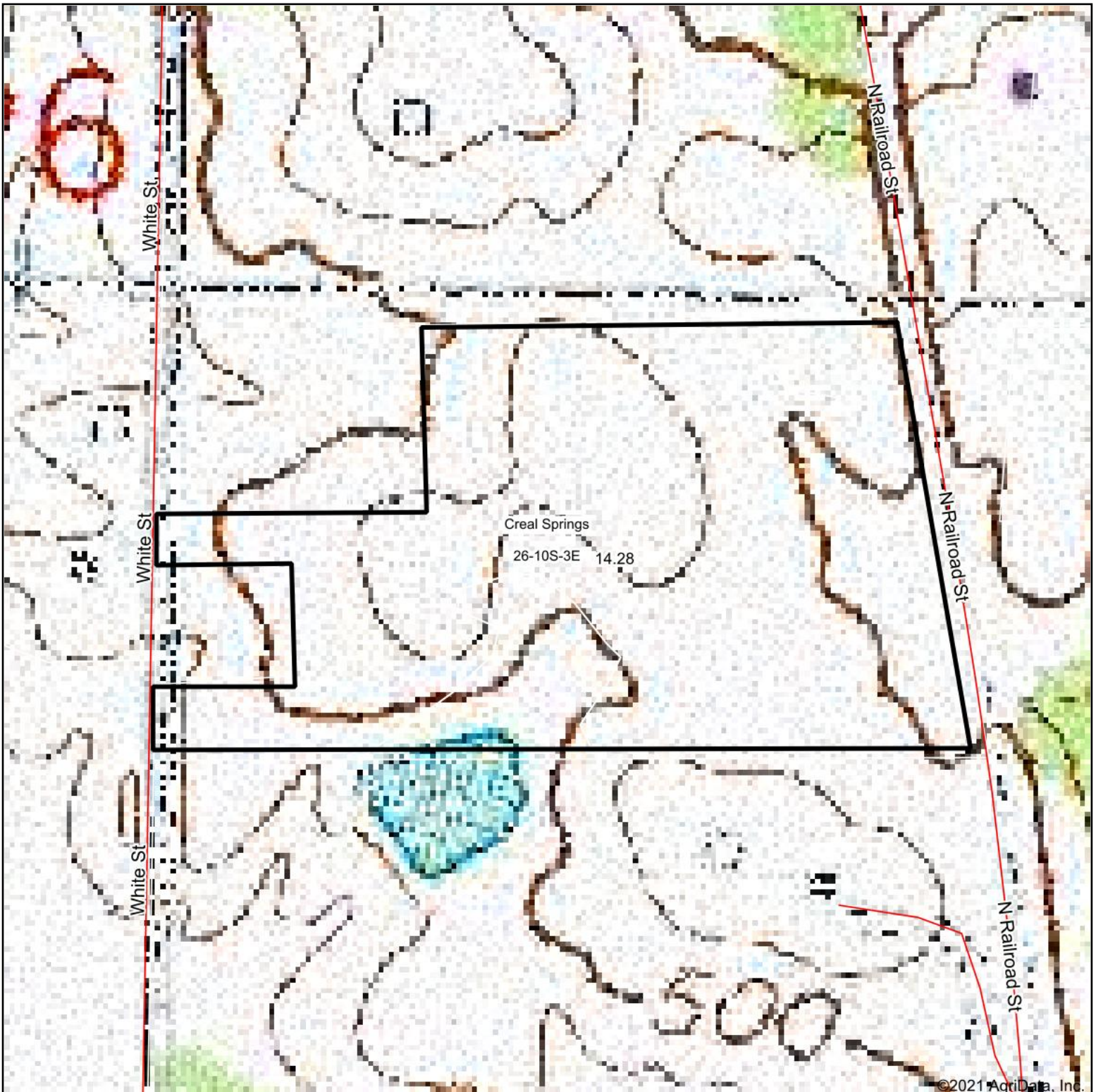
Maps Provided By:



© AgriData, Inc. 2021 www.AgriDataInc.com

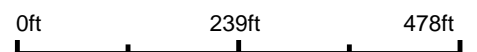
Field borders provided by Farm Service Agency as of 5/21/2008.

Topography Map

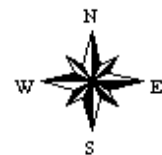


©2021 AgriData, Inc.

map center: 37° 37' 26.21, -88° 50' 39.39



26-10S-3E
Williamson County
Illinois



5/12/2021



Maps Provided By:



© AgriData, Inc. 2021

www.AgriDataInc.com