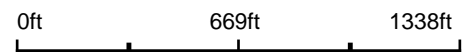


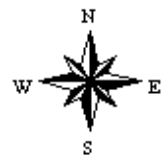
Aerial Map



Map Center: 37° 53' 38.3, -89° 2' 43.96



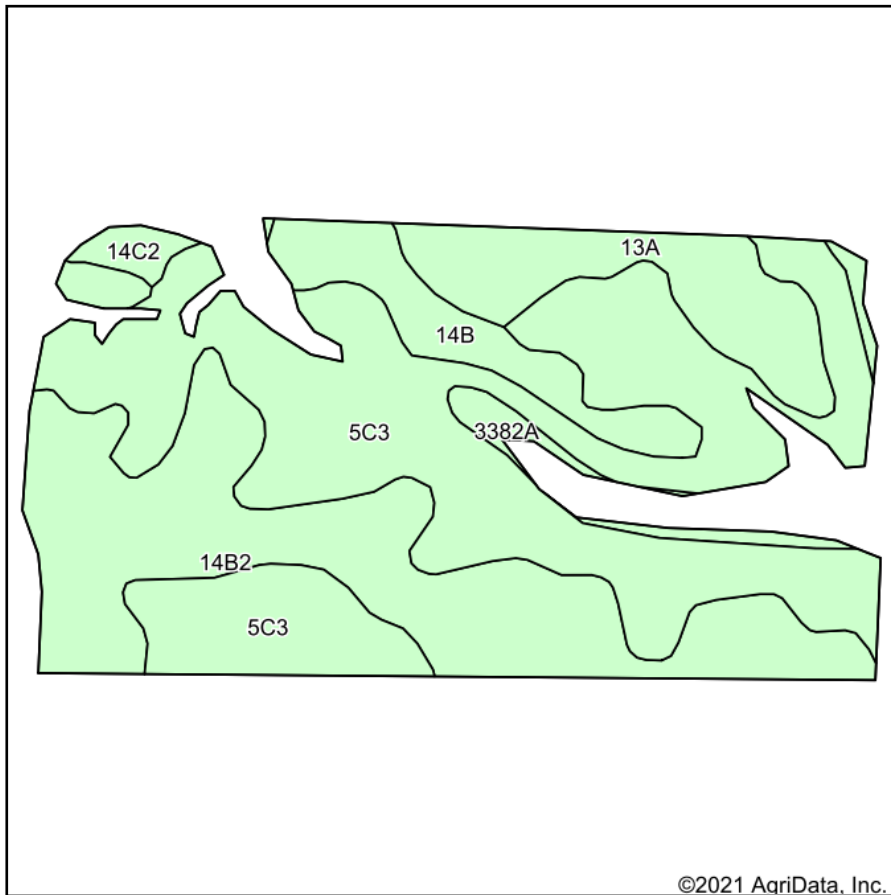
24-7S-1E
Franklin County
Illinois



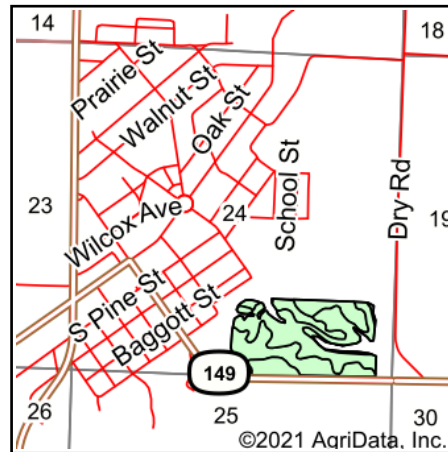
Maps Provided By:
 **surety**
CUSTOMIZED ONLINE MAPPING
© AgriData, Inc. 2021 www.AgriDataInc.com

1/28/2021

Soils Map



Soils data provided by USDA and NRCS.



State: **Illinois**
 County: **Franklin**
 Location: **24-7S-1E**
 Township: **Six Mile**
 Acres: **62.29**
 Date: **4/29/2021**



Maps Provided By:



© AgriData, Inc. 2021

www.AgriDataInc.com



Area Symbol: IL055, Soil Area Version: 14

Code	Soil Description	Acres	Percent of field	Corn Bu/A	Soybeans Bu/A	Wheat Bu/A	Crop productivity index for optimum management
**5C3	Blair silty clay loam, 5 to 10 percent slopes, severely eroded	30.79	49.4%	**102	**33	**41	**77
**14B2	Ava silt loam, 2 to 5 percent slopes, eroded	17.88	28.7%	**126	**41	**51	**93
13A	Bluford silt loam, 0 to 2 percent slopes	6.22	10.0%	136	44	55	101
**14B	Ava silt loam, 2 to 5 percent slopes	4.98	8.0%	**134	**44	**54	**99
3382A	Belknap silt loam, 0 to 2 percent slopes, frequently flooded	1.62	2.6%	156	52	63	117
**14C2	Ava silt loam, 5 to 10 percent slopes, eroded	0.80	1.3%	**122	**40	**50	**90
Weighted Average				116.5	37.9	47	87

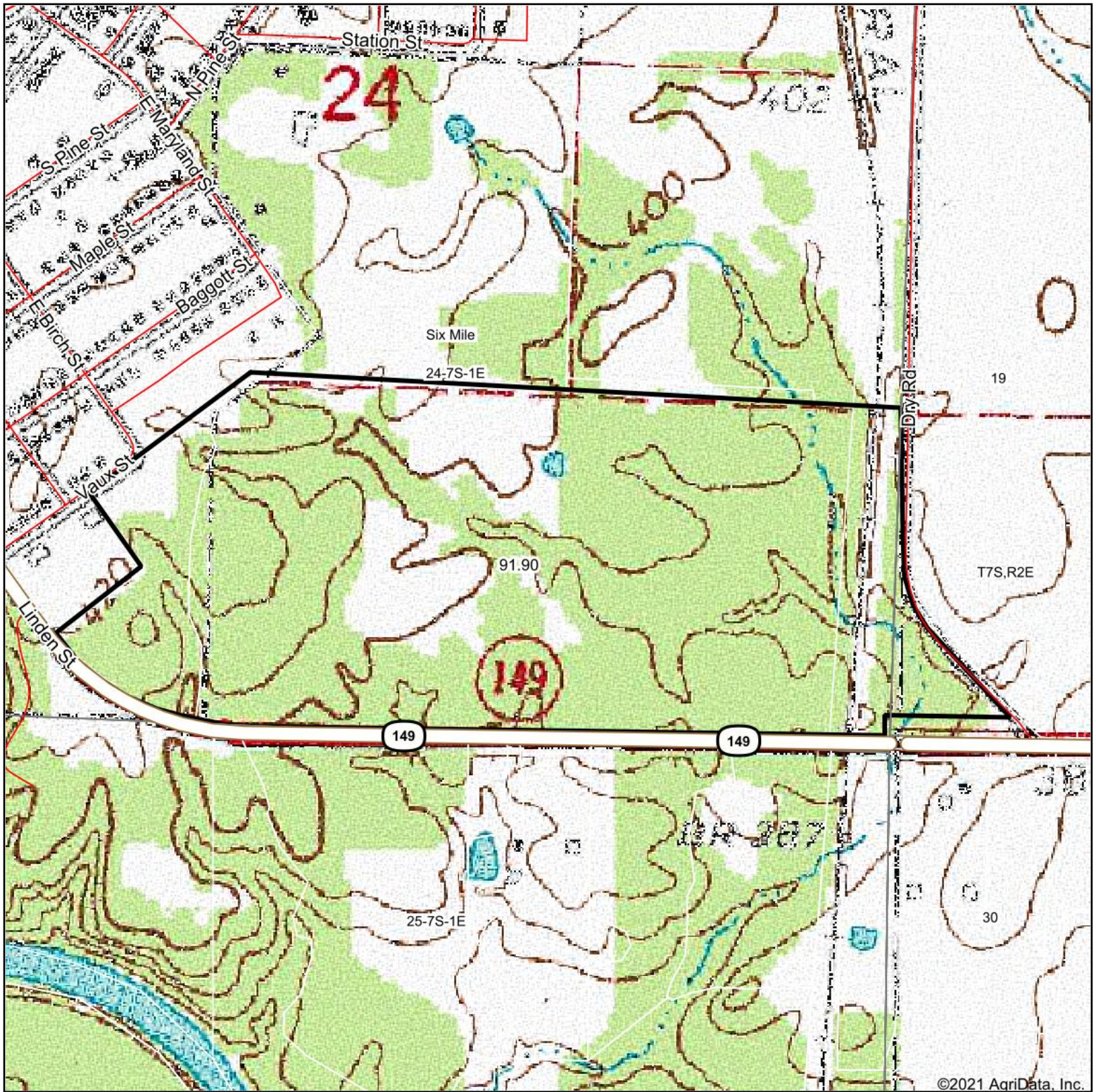
Table: Optimum Crop Productivity Ratings for Illinois Soil by K.R. Olson and J.M. Lang, Office of Research, ACES, University of Illinois at Champaign-Urbana. Version: 1/2/2012 Amended Table S2 B811

Crop yields and productivity indices for optimum management (B811) are maintained at the following NRES web site: <http://soilproductivity.nres.illinois.edu/>

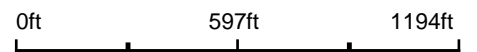
** Indexes adjusted for slope and erosion according to Bulletin 811 Table S3

Soils data provided by USDA and NRCS. Soils data provided by University of Illinois at Champaign-Urbana.

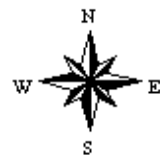
Topography Map



map center: 37° 53' 36.42, -89° 2' 40.84



24-7S-1E
Franklin County
Illinois



4/29/2021



Maps Provided By:



© AgriData, Inc. 2021

www.AgriDataInc.com