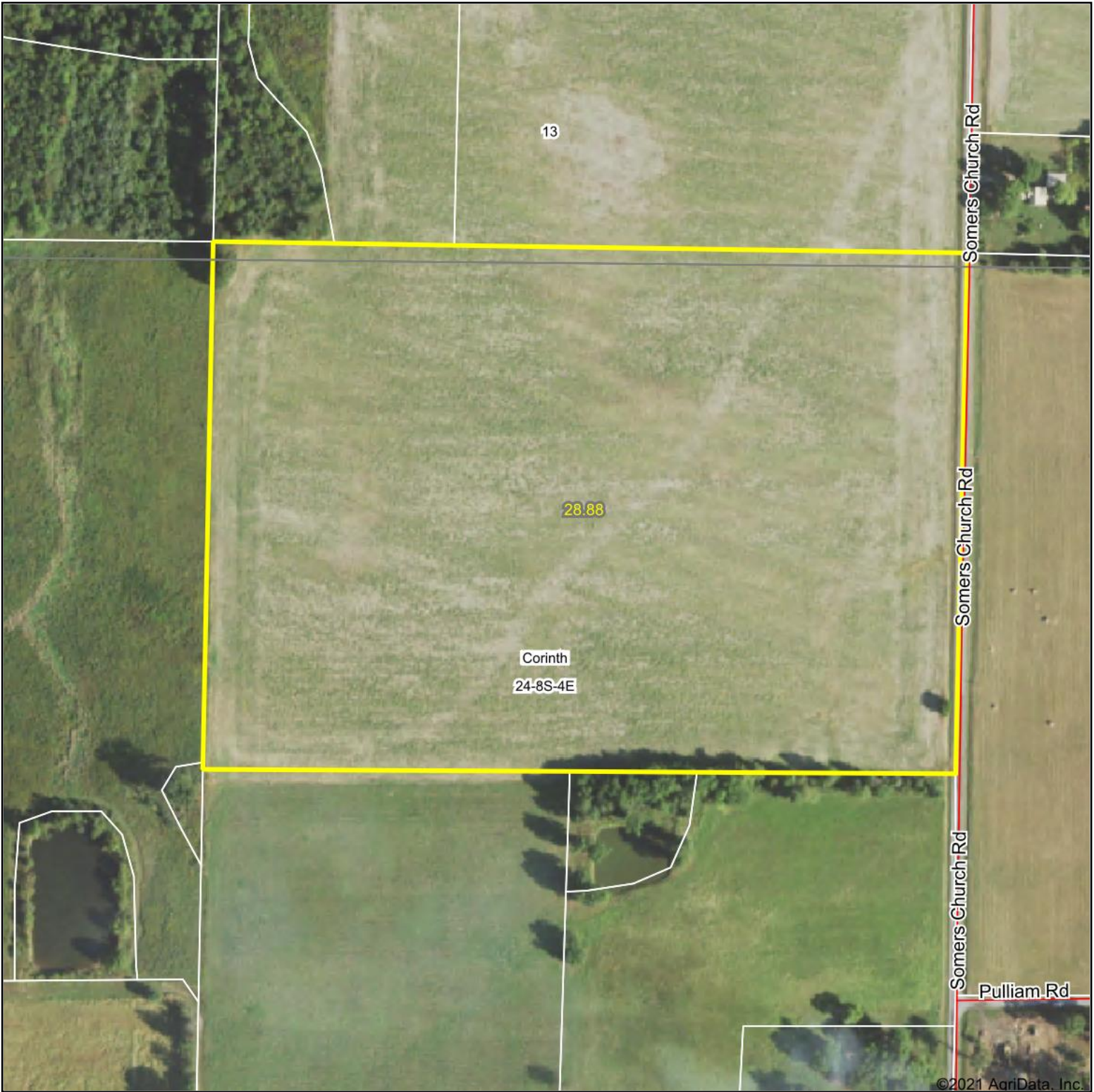


# Aerial Map



©2021 AgriData, Inc.

Map Center: 37° 49' 5.77, -88° 42' 51.21

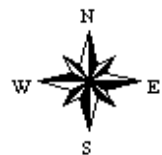


Maps Provided By:



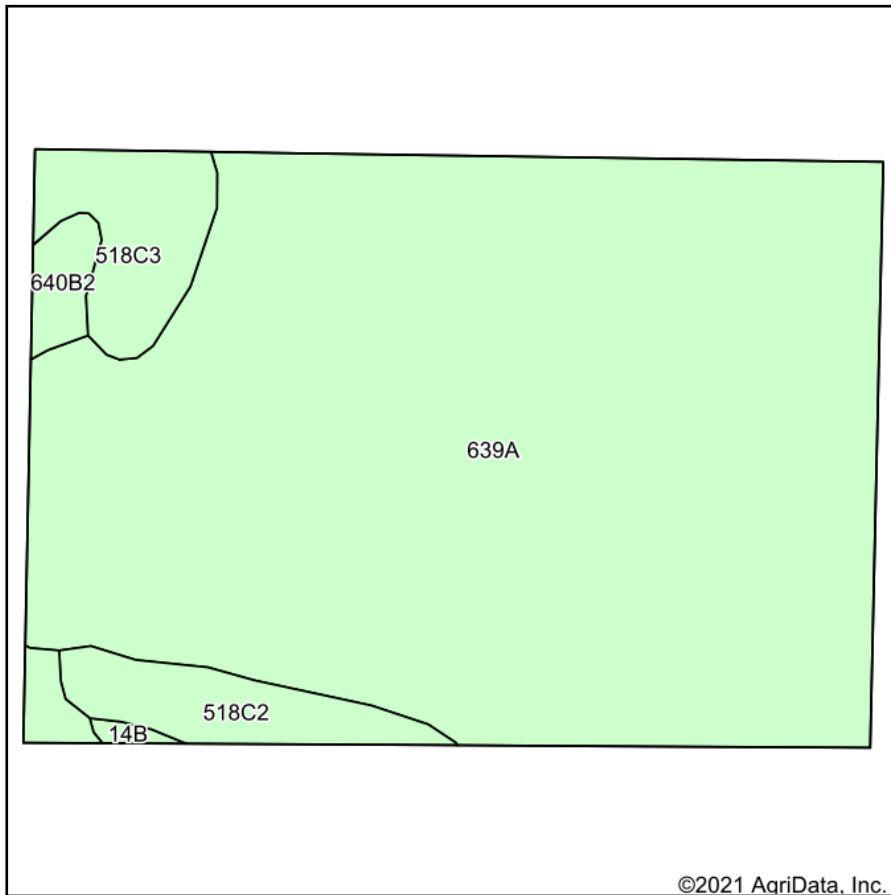
© AgriData, Inc. 2021 www.AgriDataInc.com

**24-8S-4E**  
**Williamson County**  
**Illinois**

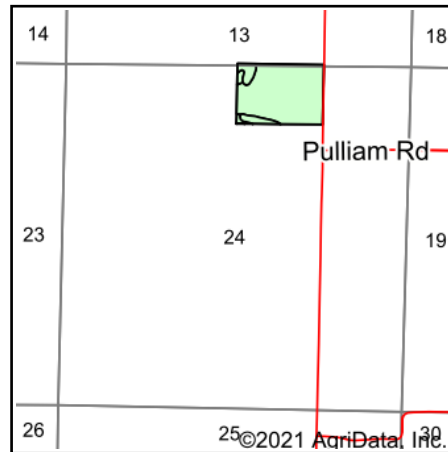


4/15/2021

# Soils Map



Soils data provided by USDA and NRCS.



State: **Illinois**  
 County: **Williamson**  
 Location: **24-8S-4E**  
 Township: **Corinth**  
 Acres: **28.88**  
 Date: **4/15/2021**



Maps Provided By:



Area Symbol: IL199, Soil Area Version: 15

Code	Soil Description	Acres	Percent of field	Corn Bu/A	Soybeans Bu/A	Wheat Bu/A	Grass-legume e hay, T/A	Crop productivity index for optimum management
639A	Wynoose silt loam, bench, 0 to 2 percent slopes	25.41	88.0%	128	40	51	4.26	95
**518C3	Rend silty clay loam, 5 to 10 percent slopes, severely eroded	1.73	6.0%	**105	**33	**41	0.00	**78
**518C2	Rend silt loam, 5 to 10 percent slopes, eroded	1.24	4.3%	**128	**40	**50	0.00	**95
**640B2	Bluford silt loam, bench, 2 to 5 percent slopes, eroded	0.42	1.5%	**129	**42	**52	0.00	**96
**14B	Ava silt loam, 2 to 5 percent slopes	0.08	0.3%	**134	**44	**54	0.00	**99
<b>Weighted Average</b>				<b>126.7</b>	<b>39.6</b>	<b>50.4</b>	<b>3.75</b>	<b>94</b>

**Table: Optimum Crop Productivity Ratings for Illinois Soil by K.R. Olson and J.M. Lang, Office of Research, ACES, University of Illinois at Champaign-Urbana.** Version: 1/2/2012 Amended Table S2 B811

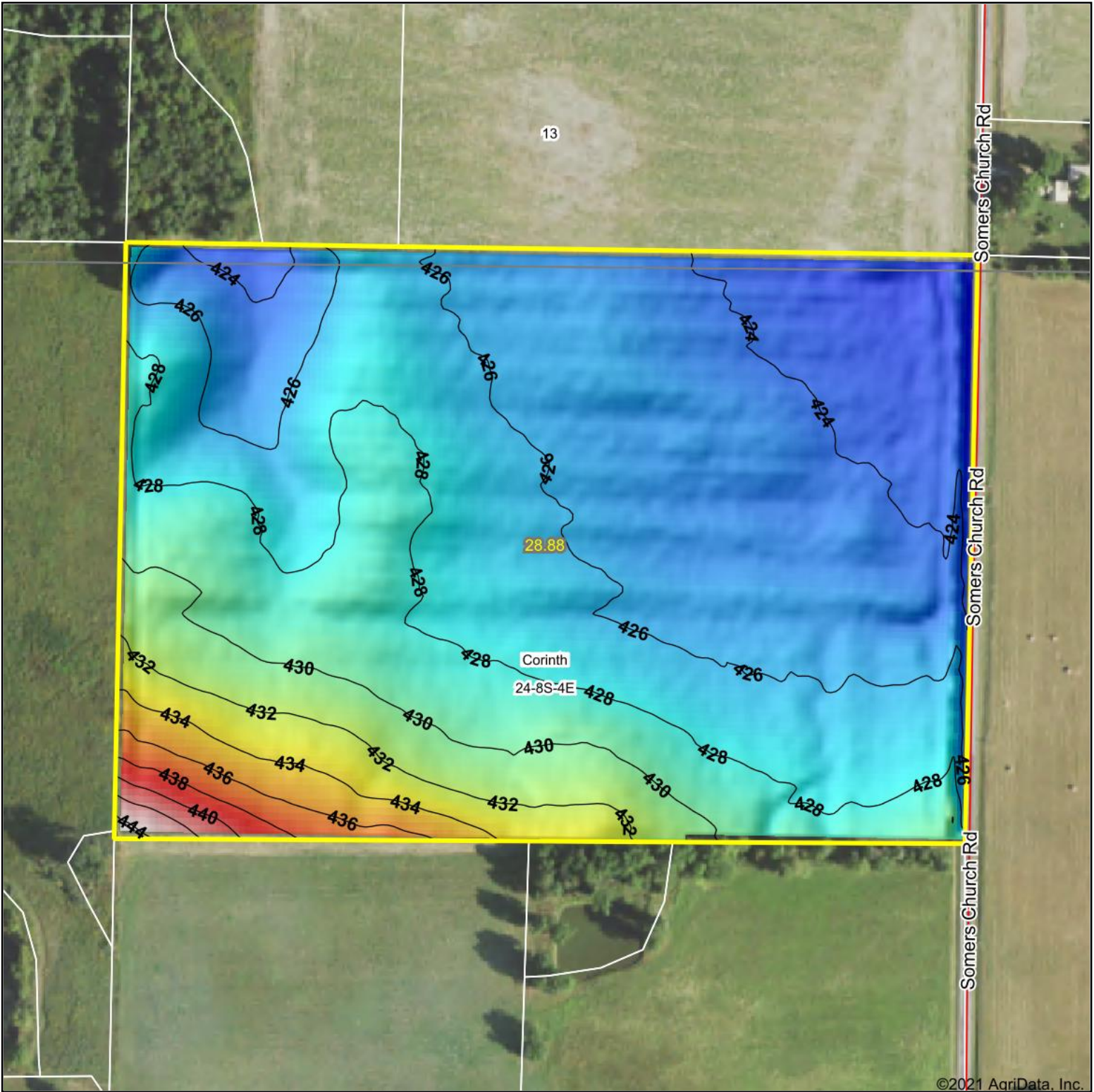
Crop yields and productivity indices for optimum management (B811) are maintained at the following NRES web site: <http://soilproductivity.nres.illinois.edu/>

\*\* Indexes adjusted for slope and erosion according to Bulletin 811 Table S3

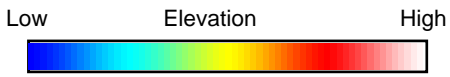
e Soils in the well drained group were not rated for grass-legume and are shown with a zero "0".

\*c: Using Capabilities Class Dominant Condition Aggregation Method

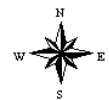
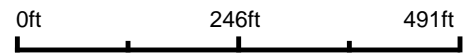
Soils data provided by USDA and NRCS. Soils data provided by University of Illinois at Champaign-Urbana.



©2021 AgriData, Inc.



Source: USGS 3 meter dem  
 Interval(ft): 2  
 Min: 422.1  
 Max: 444.3  
 Range: 22.2  
 Average: 427.3  
 Standard Deviation: 3.28 ft



**24-8S-4E**  
**Williamson County**  
**Illinois**

4/15/2021

map center: 37° 49' 5.77, -88° 42' 51.21



Maps Provided By:



© AgriData, Inc. 2021 www.AgriDataInc.com

Field borders provided by Farm Service Agency as of 5/21/2008.