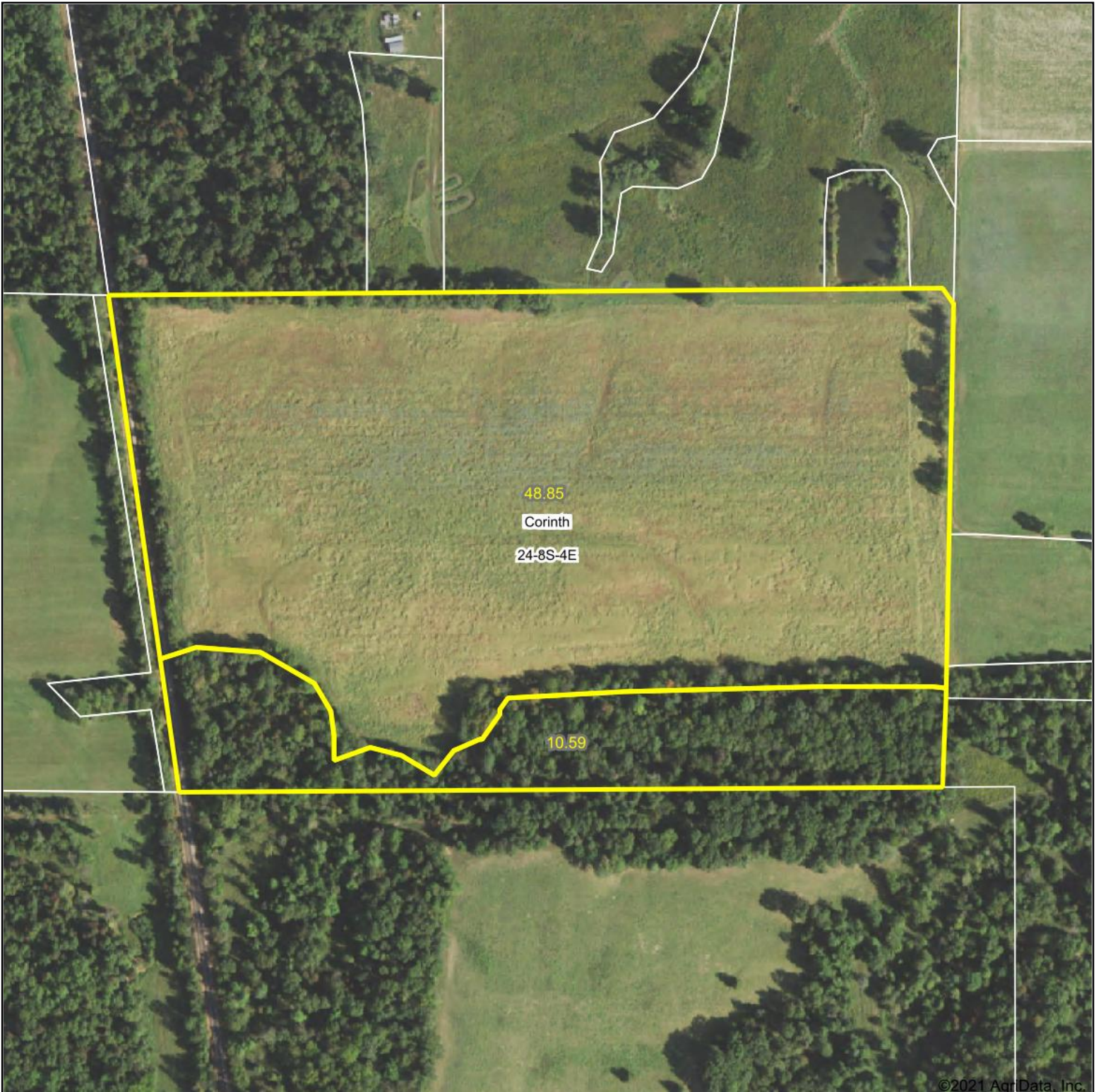
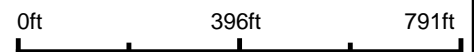


Aerial Map



©2021 AgriData, Inc.

Map Center: 37° 48' 51.33, -88° 43' 11.48

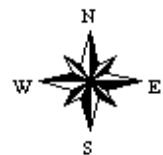


Maps Provided By:



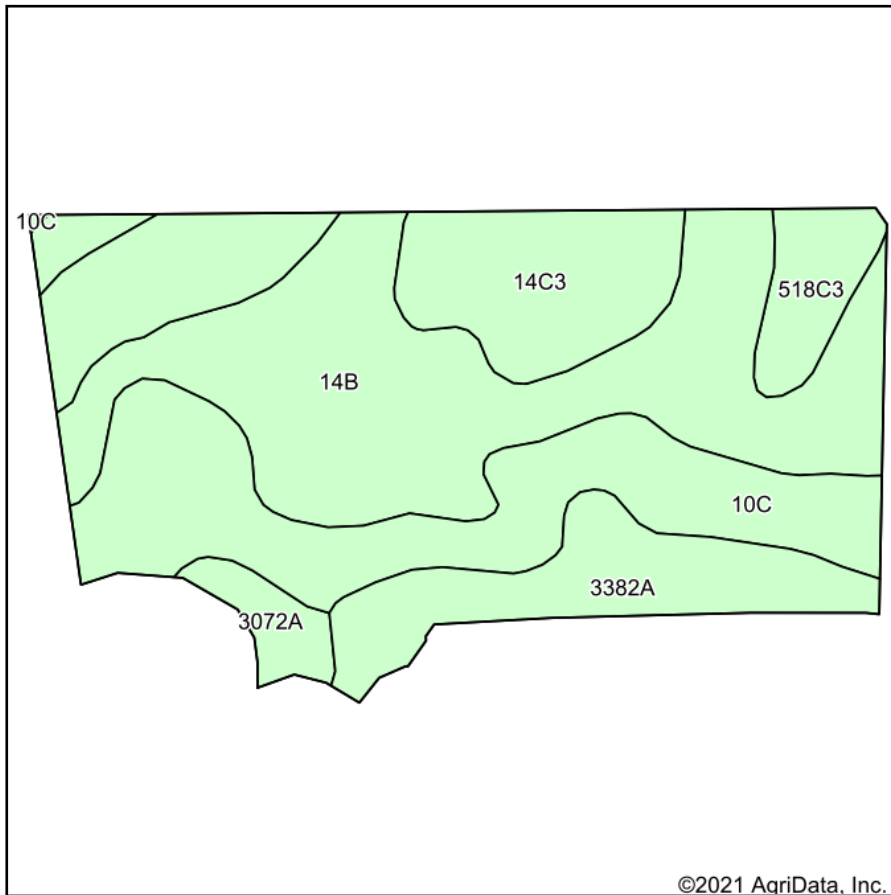
© AgriData, Inc. 2021 www.AgrDataInc.com

24-8S-4E
Williamson County
Illinois

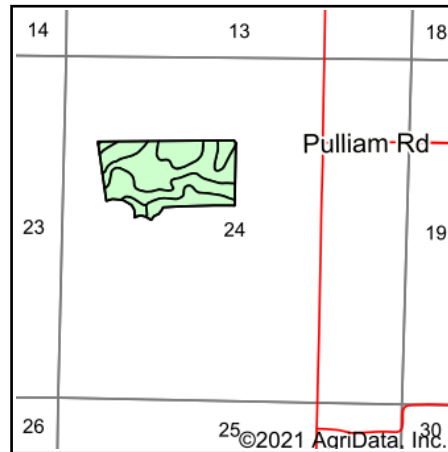


4/15/2021

Soils Map



Soils data provided by USDA and NRCS.



State: **Illinois**
 County: **Williamson**
 Location: **24-8S-4E**
 Township: **Corinth**
 Acres: **48.85**
 Date: **4/15/2021**

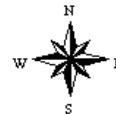


Maps Provided By:



© AgriData, Inc. 2021

www.AgriDataInc.com



Area Symbol: IL199, Soil Area Version: 15

Code	Soil Description	Acres	Percent of field	Corn Bu/A	Soybeans Bu/A	Wheat Bu/A	Grass-legume e hay, T/A	Crop productivity index for optimum management
**14B	Ava silt loam, 2 to 5 percent slopes	18.64	38.2%	**134	**44	**54	0.00	**99
**10C	Plumfield silty clay loam, 5 to 10 percent slopes	11.43	23.4%	**103	**34	**39	**3.37	**78
**14C3	Ava silty clay loam, 5 to 10 percent slopes, severely eroded	9.33	19.1%	**100	**33	**41	0.00	**74
3382A	Belknap silt loam, 0 to 2 percent slopes, frequently flooded	5.89	12.1%	156	52	63	4.89	117
**518C3	Rend silty clay loam, 5 to 10 percent slopes, severely eroded	2.22	4.5%	**105	**33	**41	0.00	**78
3072A	Sharon silt loam, 0 to 2 percent slopes, frequently flooded	1.34	2.7%	164	53	63	0.00	122
Weighted Average				122.4	40.3	48.7	1.38	91.2

Table: Optimum Crop Productivity Ratings for Illinois Soil by K.R. Olson and J.M. Lang, Office of Research, ACES, University of Illinois at Champaign-Urbana. Version: 1/2/2012 Amended Table S2 B811

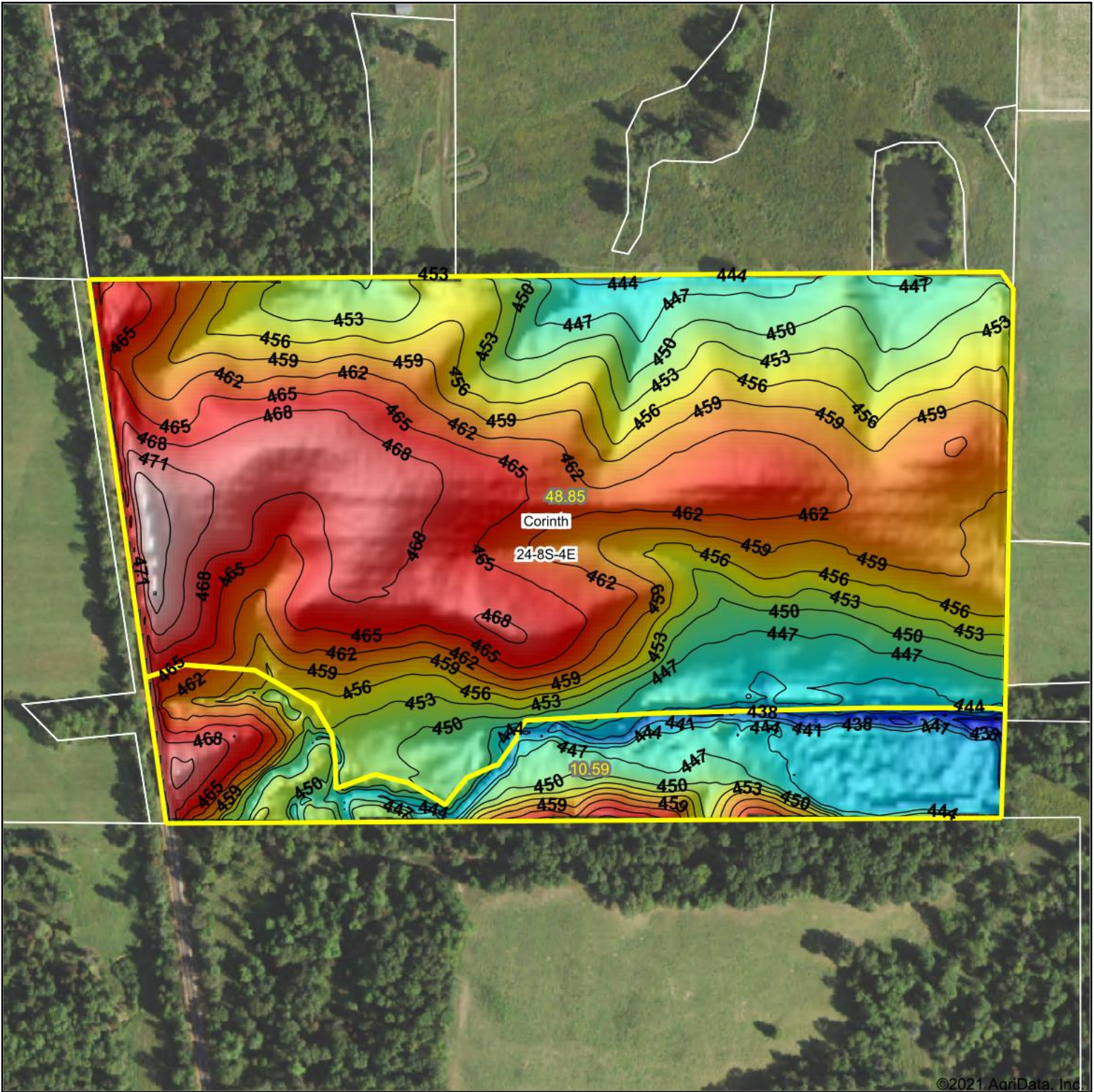
Crop yields and productivity indices for optimum management (B811) are maintained at the following NRES web site: <http://soilproductivity.nres.illinois.edu/>

** Indexes adjusted for slope and erosion according to Bulletin 811 Table S3

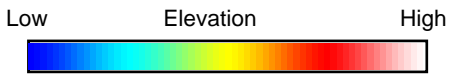
e Soils in the well drained group were not rated for grass-legume and are shown with a zero "0".

*c: Using Capabilities Class Dominant Condition Aggregation Method

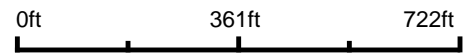
Soils data provided by USDA and NRCS. Soils data provided by University of Illinois at Champaign-Urbana.



©2021 AgriData, Inc.



Source: USGS 3 meter dem
 Interval(ft): 3
 Min: 433.2
 Max: 476.8
 Range: 43.6
 Average: 457.0
 Standard Deviation: 8.46 ft



24-8S-4E
 Williamson County
 Illinois

map center: 37° 48' 51.33, -88° 43' 11.48



Maps Provided By:



© AgriData, Inc. 2021 www.AgriDataInc.com

Field borders provided by Farm Service Agency as of 5/21/2008.